

Fort Worth Fabric Studio's *The Lucky One* TABLE RUNNER



Finished Size: 40" X 16"

Fabric: Lucky Charms from Andover

A Century Solids (Cottonball) (Solid) 16" X WOF	H Shamrock Swirl Green 415-G 7" X 22"
B Clover Stripe Green 411-G 7.5" X WOF	I Clover Stripe White 411-L 7" X 22"
C Clover Field Green 414-G 7" X 22"	J Clover Plaid Green 412-G 4" X 22"
D Shamrock Green 410-G 7" X 22"	K Clover Shirting Light Green 416-LG 4" X 22"
E Wallpaper Light Green 413-LG 7" X 22"	L Shamrock Swirl White 415-L 7" X 22"
F Clover Shirting Green 416-G 7" X 22"	M Clover Field Black 414-K 12" X WOF
G Wallpaper Green 413-G 7" X 22"	N Backing Fabric (your choice) 1.5 yards

Cutting Instructions:

All strips are cut across the width of fabric (WOF) from selvage to selvage edge unless otherwise noted.

Fabric A - Century Solids Cottonball:

- FIRST cut (3) 6" X 6" squares.
- From remaining fabric cut (27) 1.75" X 1.75" squares, (2) 36.5" X 1.5" strips, (2) 10.5" X 1.5" rectangles, and (2) 10.5" X 2.5" rectangles.

Fabric B - Clover Stripe Green:

- (2) 5.5" X 5.5" squares, (2) 6.5" X 2.5" rectangles, (2) 4.5" X 2.5" rectangles.

Fabric C- Clover Field Green:

- (2) 5.5" X 5.5" squares.

Fabric D- Shamrock Green:

- (2) 5.5" X 5.5" squares, (4) 2.5" X 2.5" squares.

Fabric E- Wallpaper Light Green:

- (3) 1.25" X 8.5" rectangles, (2) 6.5" X 2.5" rectangles.

Fabric F- Clover Shirting Green:

- (1) 5.5" X 5.5" square.

Fabric G- Wallpaper Green:

- (1) 5.5" X 5.5" square.

Fabric H - Shamrock Swirl Green:

- (1) 5.5" X 5.5" square.

Fabric I - Clover Stripe White:

- (2) 6.5" X 2.5" rectangles, (2) 4.5" X 2.5" rectangles.

Fabric J - Clover Plaid Green:

- (2) 6.5" X 2.5" rectangles.

Fabric K - Clover Shirting Light Green:

- (2) 6.5" X 2.5" rectangles.

Fabric L - Shamrock Swirl White:

- (2) 6.5" X 2.5" rectangles, (2) 4.5" X 2.5" rectangles.

Fabric M - Clover Field Black:

- (4) 2.5" X WOF strips (save for binding).

Fabric Sorting by Week

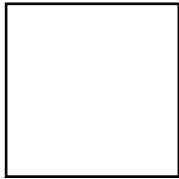
Week 2 fabrics:

- A - (3) 6" X 6" squares and (27) 1.75" X 1.75" squares.
- B, C, D - (2) 5.5" X 5.5" squares.
- E - (3) 1.25" X 8.5" rectangles.
- F, G, H - (1) 5.5" X 5.5" squares..

Week 3 fabrics:

- A - (2) 36.5" X 1.5" strips, (2) 10.5" X 1.5" rectangles and (2) 10.5" X 2.5" rectangles.
- B, I, L - (2) 6.5" X 2.5" rectangles, (2) 4.5" X 2.5" rectangles.
- D - (4) 2.5" X 2.5" squares.
- E, J, K - (2) 6.5" X 2.5" rectangles.
- M - (4) 2.5" X WOF strips (for binding)

Fabric A



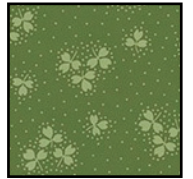
Fabric B



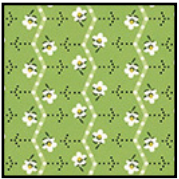
Fabric C



Fabric D



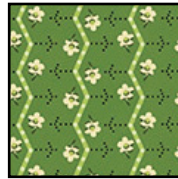
Fabric E



Fabric F



Fabric G



Fabric H



Fabric I



Fabric J



Fabric K



Fabric L



Fabric M

