



Installation Guide



Transit Nudge Bar TR1103B

All Flatline Van Co products must be properly assembled and secured before attaching to your vehicle. Improper attachment could result in an automobile accident, and could cause serious bodily injury or death to you or to others involved. You are responsible for assembling and securing Flatline Van Co products to your vehicle, checking the mounting points and attachments prior to use, and regularly inspecting the products for wear and or damage. We always recommend you use a professional to install any aftermarket accessories to your vehicle. If you have no mechanical experience and are not thoroughly familiar with the installation procedures, you must have the product installed by a professional installer or other qualified persons. The responsibility is yours and must be taken seriously for everyone's safety.



thanks.

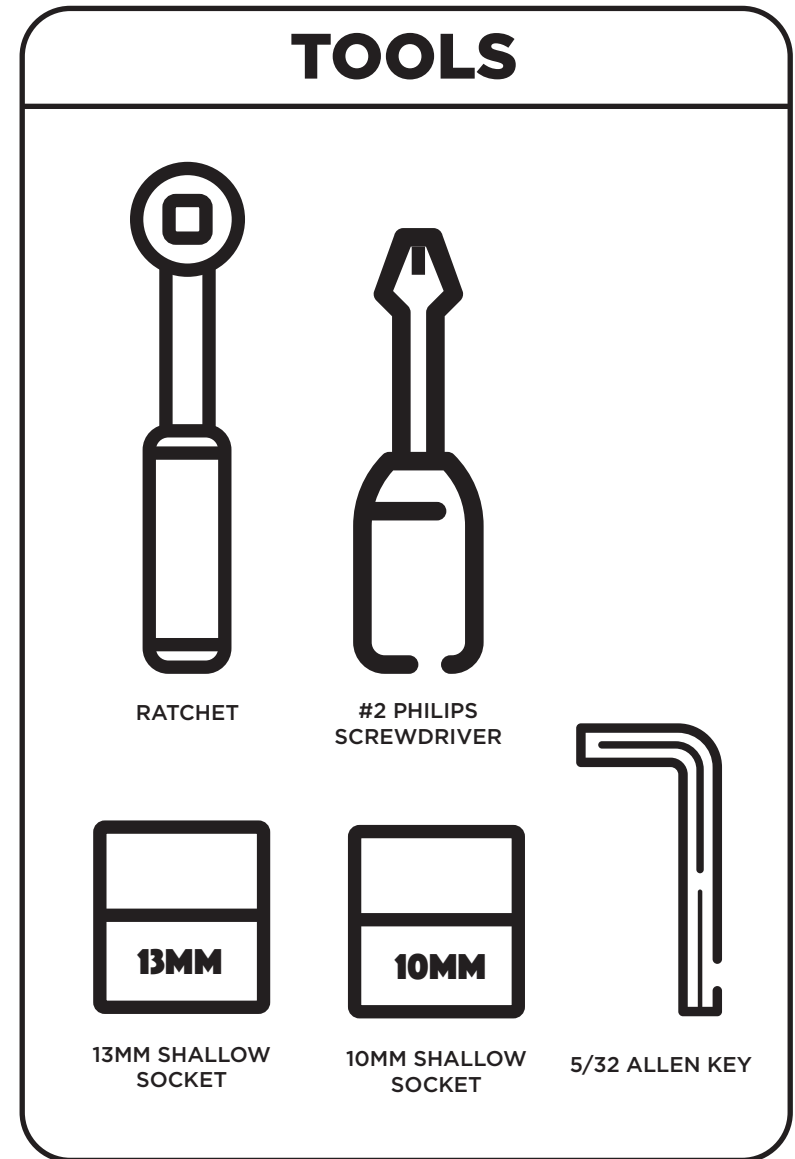
THANK YOU!

ARE YOU EXCITED ABOUT YOUR NEW NUDGE BAR? HERE ARE A FEW THINGS TO DO BEFORE BEGINNING THE INSTALLATION PROCESS--

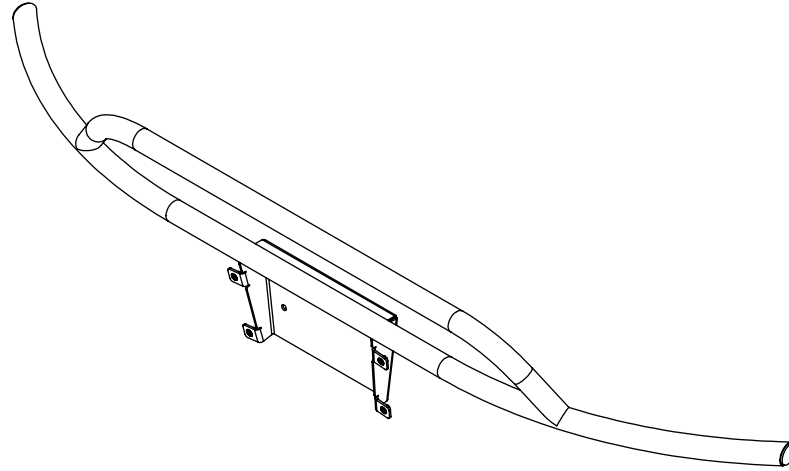
- PLEASE INSPECT THE PRODUCT TO ENSURE THERE WAS NO DAMAGE INCURRED DURING SHIPPING.
- IF THERE IS DAMAGE TO REPORT, PLEASE CONTACT OUR CUSTOMER SERVICE DEPARTMENT AS SOON AS POSSIBLE.
- NEXT, USING THE "PACKAGE CONTENTS" PAGE, CHECK INVENTORY AND FAMILIARIZE YOURSELF WITH THE PARTS AND HARDWARE.
- GATHER ALL TOOLS REQUIRED FOR INSTALL.
 - 13MM SOCKET
 - 10MM SOCKET
 - RATCHET
 - 5/32 ALLEN KEY
 - PHILLIPS SCREW DRIVER

ESTIMATED INSTALL TIME- 30 MIN

BLUE LOCTITE IS RECOMMENDED FOR THIS INSTALLATION.

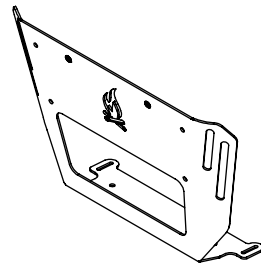


PACKAGE CONTENTS



NUDGE BAR

QTY - 1



FRONT PLATE

QTY - 1

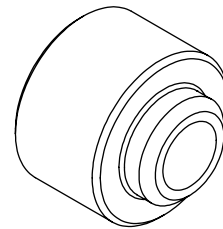
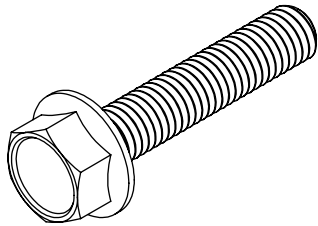


PLATE SPACER

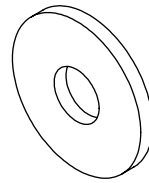
QTY - 2

HARDWARE



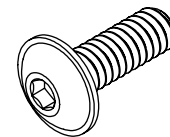
**M8-1.25 X 40
FLANGED HEX HEAD
SCREW**

QTY - 2



**M8 SCREW X 24 O.D.
OVERSIZED FLAT
WASHER**

QTY - 2

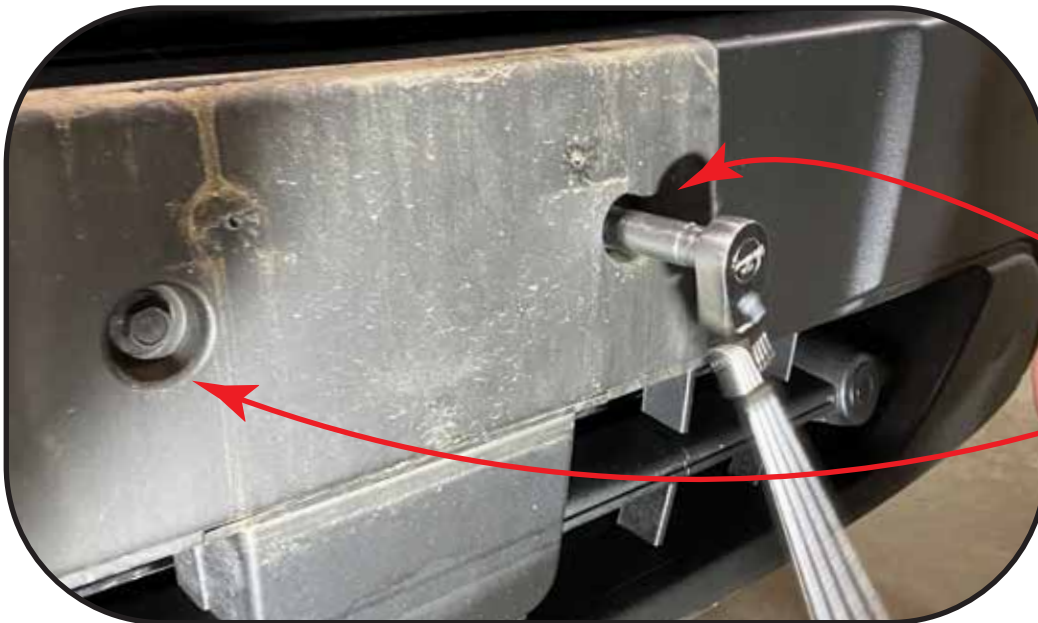


**1/4-20 X 0.75
FLANGED BUTTON
HEAD HEX DRIVE
SCREW**

QTY - 6

LET'S GET STARTED!

1. FIRST STEP IS TO REMOVE THE LICENSE PLATE MOUNT AS SHOWN ON THE RIGHT. MOST OFTEN THIS WILL BE ATTACHED WITH PHILIPS DRIVE SCREWS, BUT OCCASIONALLY THEY WILL BE HELD WITH RIVETS THAT WILL NEED TO BE DRILLED OUT.
2. AFTER REMOVING THE LICENSE PLATE MOUNT YOU WILL SEE TWO BOLTS. REMOVE THESE WITH A 13MM SOCKET AND SET ASIDE.
NOTE- WE RECOMMEND CLEANING THE AREA BEHIND THE LICENSE PLATE MOUNT NOW BEFORE WE COVER IT BACK UP.



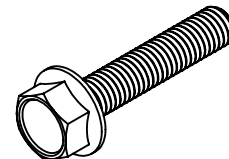
REMOVE BOLTS

3. NEXT, GRAB THE **NUDGE BAR**, **M8-1.25 X 40 FLANGED HEX HEAD SCREWS**, **M8 FLAT WASHERS**, AND **PLATE SPACERS** AND INSERT THE HARDWARE INTO THE **NUDGE BAR** AS SHOWN ON THE RIGHT. YOU'LL HAVE TO HOLD THE HARDWARE IN PLACE AS YOU POSITION THE **NUDGE BAR** IN PLACE ON THE BUMPER. FINGER TIGHTEN THE HARDWARE INTO THE BUMPER AS YOU HOLD IT IN PLACE.

NOTE- WE RECOMMEND PUTTING SOME BLUE LOCTITE ON THE M8 BOLTS BEFORE THREADING THEM INTO THE BUMPER.

4. TIGHTEN THE BOLTS DOWN TO THE BUMPER.

PLACE HARDWARE AND HOLD WHILE
INSTALLING NUDGE BAR TO BUMPER



M8-1.25 X 40 FLANGED HEX
HEAD SCREW



M8 SCREW X 24 O.D.
OVERSIZED FLAT WASHER

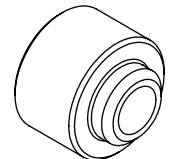


PLATE SPACER

5. TO PREPARE FOR INSTALLING THE **FRONT PLATE**, YOU MUST FIRST REMOVE THE TWO FACTORY BOLTS ON THE UNDERSIDE OF THE BUMPER THAT HOLD THE SPLASH GUARD ON. THESE BOLTS REQUIRE A 10MM SOCKET. SET THESE ASIDE, AS WE WILL REINSTALL THEM.
6. NOW, GRAB THE **FRONT PLATE** AND LOOSELY THREAD IN THE FOUR 1/4-20 X 0.75 **FLANGED BUTTON HEAD HEX DRIVE SCREWS** INTO THE FOUR HOLES AS SHOWN BELOW. KEEP THESE PLENTY LOOSE FOR THE NEXT STEP.
***NOTE-** WE RECOMMEND PUTTING SOME BLUE LOCTITE ON THE 1/4-20 SCREWS BEFORE INSERTING THEM INTO THE NUDGE BAR*



**REMOVE THESE BOLTS
AND SET ASIDE**



7. GRAB THE BOLTS YOU REMOVED FROM THE SPLASH GUARD AND REINSTALL THEM IN THE LOWER SLOTS OF THE **FRONT PLATE** AS SHOWN. YOU MAY NEED TO WIGGLE THEM A BIT TO GET THEM TO BITE. LEAVE THEM LOOSE, THEN TIGHTEN THE FOUR **1/4-20 SCREWS** ON THE **FRONT PLATE** BEFORE TIGHTENING THE LOWER BOLTS DOWN.

8. ONCE YOU'VE TIGHTENED DOWN ALL THE HARDWARE YOU CAN REINSTALL YOUR LICENSE PLATE USING THE TWO REMAINING **1/4-20 X 0.75 FLANGED BUTTON HEAD HEX DRIVE SCREWS**.

NOTE- WE RECOMMEND PUTTING SOME BLUE LOCTITE ON THE 1/4-20 SCREWS BEFORE REATTACHING YOUR LICENSE PLATE.



**REINSTALL THESE BOLTS
(MAY REQUIRE WIGGLING)**

9. IF YOUR VAN IS EQUIPPED WITH THE FRONT VIEW OR 360 CAMERA PACKAGES; BELOW IS AN IMAGE OF WHAT YOUR FRONT VIEW CAMERA WILL SHOW AFTER INSTALLING THE NUDGE BAR.



GET OUT AND EXPLORE!

LEAVE US A REVIEW

Happy with your new FVC product? We would love to hear (and see) from you! Head to the product page and click "Leave Review." Add a short review and upload a few photos to be showcased on the product page.

SHARE YOUR PHOTOS WITH US

We love seeing how our customers use their FVC products and following along with your adventures. Tag us in your photos with @flatlinevanco or send them to us via email. We love posting customer pictures in our feed!

CUSTOMER SUPPORT

If you are having any issues with your product, please reach out, and we will make it right. FVC is a company of van and outdoor enthusiasts that design and use our own products, so we want you to be as stoked on your new parts as we are!



@flatlinevanco



facebook.com/flatlinevanco



youtube.com/c/flatlinevanco



support@flatlinevanco.com



thanks!