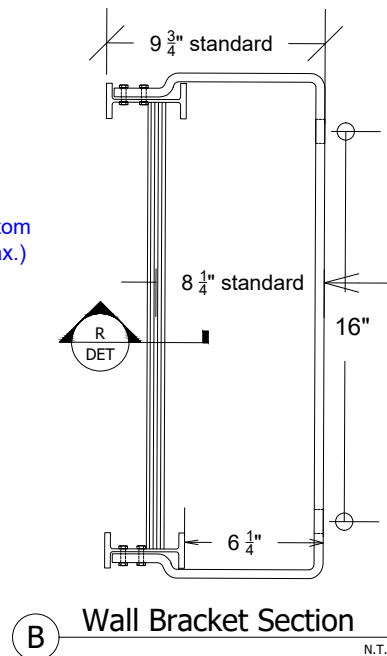


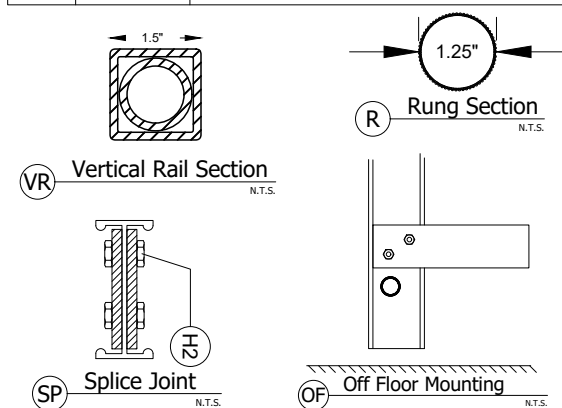
A Platform Plan View
N.T.S.



B Wall Bracket Section
N.T.S.

ALACCGP SPECIFICATIONS:

| | | |
|----|----------------|---|
| 1 | Floor Bracket | 2 1/2" x 1/4" 6063-T52 Aluminum Bar. Secured to ladder siderail using [HDWE 2]. 9/16" Pre-drilled hole for mounting hardware (mounting hardware by others). |
| 2 | Siderail | Aluminum I Beam Design: Flange Width = 1 7/8", Flange Thickness = 1/4", Web Thickness = 1/8", Web Height = 3 1/2". |
| 3 | Rung | Aluminum 6061-T6 deeply serrated ladder rung for hand and foot traction, 1 1/2" Ø x 1/8" thick. |
| 4 | Wall Bracket | 2 1/2" wide x 1/4" thick 6063-T52 Aluminum Bar secured to ladder siderail with [HDWE 1]. 9/16" punched holes that are 16" on center for mounting hardware (provided by others). |
| 5 | Splice Joint | (2) 1/2" thick x 3" wide 6061-T6 Aluminum Bars sandwiching the I-Beam design side rail where splice occurs. Fastened to each section with (4) 1/2" grade 8 hex head bolts with locking nuts on both the upper and lower ladders that are spliced together. |
| 6 | End Cap | Ladder end caps create smooth finish at top of ladder siderail. |
| 7 | Vertical Rails | Vertical ladder square tube handrails extending more than 42" above the top rung. Handrails are attached to ladder side rail using H1 hardware package. Bolts run through boarding rails, side rail, and are backed with a 9/16" x 1.5" aluminum rectangular bar. |
| 8 | Platform | 2" Serrated Planking Tread Framed with 5" x 3" x .125" Aluminum Channel and bolted through the ladder siderail with H2 hardware. |
| 9 | Guardrails | 1.5" OD x .125" thick square tube 6061-T6 aluminum extrusions with 14" spacing to allow for safe access onto the walking working surface while accessing through the step off platform. |
| H1 | HDWE 1 | 3/8" hex head steel bolt, grade 8 bolt paired with (2) 3/8" washers, and a grade 8 nylon locking nut. |
| H2 | HDWE 2 | 1/2" hex head, grade 8 bolt paired with (2) 1/4" washers, and a grade 8 nylon locking nut. |
| H3 | HDWE 3 | 1/2" x 1 1/2" aluminum pop rivet. |



**INDUSTRIAL
LADDER &
SCAFFOLDING**

Serving the Construction Industry Since 1959

sales@anyladder.com

www.anyladder.com

ADDITIONAL OPTIONS:

| |
|---|
| <input type="checkbox"/> Deluxe 92" Security Door |
| <input type="checkbox"/> Self closing gate at end of platform |
| <input type="checkbox"/> Off Floor Mounting |
| <input type="checkbox"/> |
| <input type="checkbox"/> |

ALACCGP

☐ FREIGHT (SPECIFY ADDRESS) ☐ WILL CALL - BENICIA, CA

| | |
|-------------------|--|
| PROJECT: | |
| ADDRESS: | |
| CITY, STATE, ZIP: | |
| JOB PHONE #: | |

COMPANY:

APPROVED BY:

SIGNATURE:

QUANTITY:

PHONE #:

DATE: