

B Ladder/Bracket Section
N.T.S.

Wall Bracket Locations from bottom of ladder (no more than 6' apart):

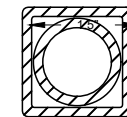
1. _____
2. _____
3. _____
4. _____

Does any bracket need to be shorter or longer than the other (If so, denote below):

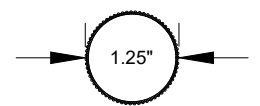
1. _____
2. _____
3. _____
4. _____

ALACCG SPECIFICATIONS:

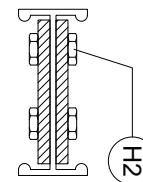
1	Floor Bracket	2 1/2" x 1/4" 6063-T52 Aluminum Bar. Secured to ladder siderail using [HDWE 2]. 9/16" Pre-drilled hole for mounting hardware (mounting hardware by others).
2	Siderail	Aluminum I Beam Design: Flange Width = 1 7/16", Flange Thickness = 1/4", Web Thickness = 1/8", Web Height = 3 1/2".
3	Rung	Aluminum 6061-T6 deeply serrated ladder rung for hand and foot traction, 1 1/2" Ø x 3/16" thick.
4	Wall Bracket	2 1/2" wide x 1/4" thick 6063-T52 Aluminum Bar secured to ladder siderail with [HDWE 1]. 9/16" punched holes that are 16" on center for mounting hardware (provided by others).
5	Splice Joint	(2) 1/4" thick x 3" wide 6061-T6 Aluminum Bars sandwiching the I-Beam design side rail where splice occurs. Fastened to each section with (4) 1/4" grade 8 hex head bolts with locking nuts on both the upper and lower ladders that are spliced together.
6	End Cap	Ladder end caps create smooth finish at top of ladder siderail.
7	Vertical Rails	Vertical ladder square tube handrails extending more than 42" above the top rung. Handrails are attached to ladder side rail using H1 hardware package. Bolts run through boarding rails, side rail, and are backed with a 1/8" x 1.5" aluminum rectangular bar.
H1	HDWE 1	3/8" hex head steel bolt, grade 8 bolt paired with (2) 3/8" washers, and a grade 8 nylon locking nut.
H2	HDWE 2	1/4" hex head, grade 8 bolt paired with (2) 1/4" washers, and a grade 8 nylon locking nut.
H3	HDWE 3	1/4" x 1 1/2" aluminum pop rivet.



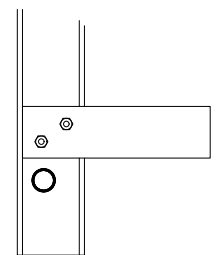
R Vertical Rail Section
N.T.S.



R Rung Section
N.T.S.



SP Splice Joint
N.T.S.



A Off Floor Mounting
N.T.S.

INDUSTRIAL
LADDER & SCAFFOLDING
P: (916) 452-0231 sales@anyladder.com
www.ANYLADDER.com

ADDITIONAL OPTIONS:

ALACCG

<input type="radio"/> FREIGHT (SPECIFY ADDRESS) <input type="radio"/> WILL CALL - BENICIA, CA	
PROJECT:	
ADDRESS:	
CITY, STATE, ZIP:	
JOB PHONE #:	

COMPANY:	
APPROVED BY:	
SIGNATURE:	
QUANTITY:	
PHONE #:	
DATE:	