



LE6R-5CCT

6" Round Economy Recessed 5CCT LED 14W



Type IC, Wet & Air-Tight

DESCRIPTION

6" Round Recessed LED With Integral Driver In Connection Box

FEATURES & BENEFITS

5CCT user selectable 2700-3000-3500-4000-5000K

1/2" Thin - Install Directly Under Joists

Maximum Layout Flexibility

Driver Inside Connection Box - No Junction Box Needed

Fast & Easy To Install - Save On Labor

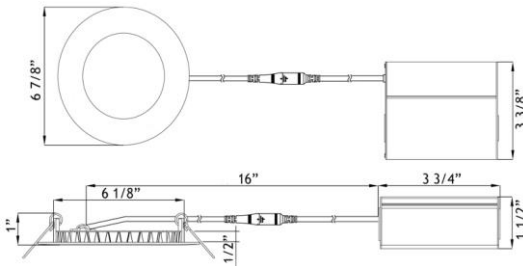
Type IC Rated - No Housing Required

Available in 6 Pack for additional savings

MOUNTING

Cut Hole In Ceiling And Snap Fixture In Opening With Attached Spring Clips. Ceiling Clearance Required For Driver: 1 1/2"

DIMENSIONS: ID 6 1/8" OD 6 7/8" Cut Out 6 1/4" to 6 1/2"



120V TRIAC Dimmable Driver Included



AVAILABLE TRIMS



White



Black

ORDERING GUIDE

	Trim	Packaging
LE6R-5CCT-WH	White	Individually packaged, 20 per case
LE6R-5CCT-BK	Black	Individually packaged, 20 per case
LE6R-5CCT-WH-6P	White	6 pack per box, 4 boxes per case total 24 fixtures

Project:

Location:

Model #:

Qty:

Notes:

SPECIFICATION

Applications	Recessed Ceiling, Showers & Soffits				
Energy Used	14 W				
Colour Temperature	2700	3000	3500	4000	5000
Light Output	910	970	1050	1070	1030
Halogen Equivalent	90 W				
Beam Angle	110°				
CRI	90 +				
Driver Input	120V AC	Triac Dimmable			
Junction Box Wire Capacity	Max 5 No 12 AWG or 8 No 14 AWG				
Power Factor	0.95				
Approved Location	Insulated Ceiling, Wet & Damp Locations				
IP Rating	IP 54				
Air Tight	Yes				
Ambient Temperature	-40°F (-40°C) to +104°F (+40°C)				
Projected Life	70% Light Output at 36,000 Hours				
Certification	c UL us				
Warranty	5 Year				

ACCESSORIES

Sold Separately



Low Voltage Extension Cables 10 ft FT4 / CMR rated
[model # EXC10-5CCT](#)



[26" Long Flat Rough-In Plate model # RIP6](#)



[13" Flat Rough-In Plate - model # MP6-2](#)



[Flanged Plate with Hanger Bars - model # FRP6](#)



[Goof Ring OD 7 5/8" White # GR6 Black # GR6-BK](#)



Emergency Driver 8W 120-347V input
[model # BLD-HM08D-YYY](#)

COMPLIANCE



Type IC
Air-Tight
Wet Location

Lotus LED Lights USA

250 H Street # 301, Blaine WA 98230 tel 360-200-5500
Hainesport NJ, Naples FL, Vancouver WA

www.LotusLEDLights.com

mailing addresses
warehouses

Lotus LED Lights CANADA

1080 Cliveden Ave # 6, Delta BC V3M 6G6 tel 604-538-3090
Delta BC & Mississauga ON