



2023 Collection



Canadian Spa Company
6405 Inducon Drive
West, Sanborn, NY 14132
Toll Free 844-879-7727

Canadian Spa Company
Canada House, Salbrook Road,
Salfords, Surrey, RH1 5GL, UK
Tel: +44 (0)1293 824094

Canadian Spa Company
1283 Cornwall Rd,
Oakville, ON L6J 7T5
CA: 877-347-7727



canadianspacompany.com

SKU: KM-10088. 24/06/22

- Hot tubs
- Grills
- Saunas
- Accessories
- Swim spas
- Gazebos



Welcome

We are glad that you have chosen to partner with Canadian Spa Company on your path to wellness, relaxation and family fun time.

We started in the pool and spa industry 45 years ago with a vision to make the benefits of hydrotherapy available to everyone. Over the last few decades, our team has worked diligently to perfect hot tub designs that include all of the features that we know our customers love in a readily available and affordable package.

We keep quality at the top of our mind every step of the way, from the components that we use within our spas, to the hydro efficiency of our insulation and heat reclamation system, to the customer care and after sales service that we provide. This is part of the reason why our products have received numerous awards and accolades throughout the industry.





ACRYLIC SPA FEATURES

HYDROTHERAPY JET CUSTOMISATION Directional • Rotational • Adjustable • Interchangeable

There are two different styles of jets in our spas: directional, rotational.

Each jet provides a different hydrotherapy experience.

Directional Rotational



Adjustable

All jets are individually controlled and adjustable. This includes the ability to increase/decrease the flow of each jet by rotating the faceplate which allows for complete control over the massage.

Our unique design makes it easy to turn the jet face.



Interchangeable

Each jet can be interchanged with any other jet of the same size.



Our diverter valve lets you concentrate the full power of our pump(s) to one or both sides of the spa giving you full control of the flow volume.

This means ultimate individual customisation for every seat in the spa.



Every jet is equipped with air control valves which control the amount of air mixed into the water to further adjust the hydrotherapy massage pressure level and increase blood circulation.

COMPONENTS FROM LEADING MANUFACTURERS



HYDROMASSAGE BATHTUB PUMP	
Model WP500-II	SKU:KK-10319
High speed	Qmax 1120 L/min
Hmax 14 m	50 Hz 15 A P, 3.7 kW 2900 r/min
220-240 V	
Low speed	Qmax 520 L/min
Hmax 3 m	50 Hz 4.5 A P, 0.75 kW 1450 r/min
220-240 V	
PH1 Class 155(F) 1P 55 CAP 50 µF/450V S1	
AMB 40°C Maximum Water Temperature: 50°C	
Thermally Protected	

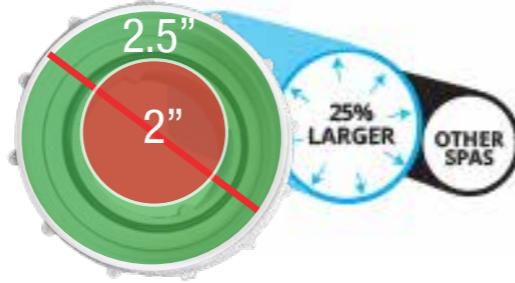
Our industry leading 15A 5HP 2 speed pump provides more power than any other pump on the market to circulate the spa water and provide a deep hydrotherapy massage.



Built in energy efficient heater provides hot water and is controlled by our digital control pack. Energy saving features include a daily purge system to keep hot tub pristine.

Sensors detect water flow and pressure to circuit

EFFICIENT HOT TUB PLUMBING



Our oversized 2.5" intake is **25%** more efficient than the industry standard of 2" for maximum flow.

No right angle restrictions in our plumbing means better flow-through and less resistance placed on the pump.

There are no twisted or rigid corners with our FlowFlex coil pipes, allowing for maximum water pressure.

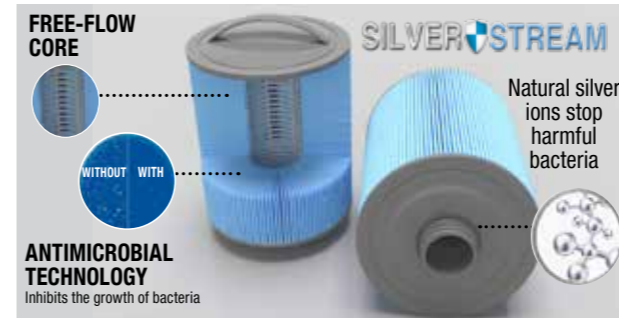


For user safety, our spas are fitted with a vacuum brake, ensuring the suction inside the spa is cut off immediately if blocked.

3 Step water purification

CANADIAN SPA COMPANY OXIDATION PROCESS

Ozone Generator + UV-C Germicidal Light + Glacier Filtration = AO₃P



UV installed AO₃P system installed in every spa



Our Glacier AO₃P system sterilizes up to 99.9% of bacteria in your hot tub, reducing chemical usage by up to 80% and leaving your water crystal clear!

BACK GARDEN DELIVERY FORM

Upload your information to our site and our experienced team will provide you with a quote to move your spa from the kerb to your garden, remove the packaging and install the accessories.



Cover Comparison

Canadian Spa Cover:	Other Covers:
25% better insulation	Thinner cover
No heat loss through middle seam	Less heat efficient cover
Easy to lift cover from all sides	No side handles
Skirt completely seals spa	Shorter skirt does not seal spa

Warm air rises and the majority of heat is lost through the top of the spa, this cover helps to retain the heat.

Introducing Black Out Insulation

Black Out insulation will also increase the absorption of heat in materials up to 20%. Our innovative insulation is an industry first.



Black Out Foam Curtain Insulation



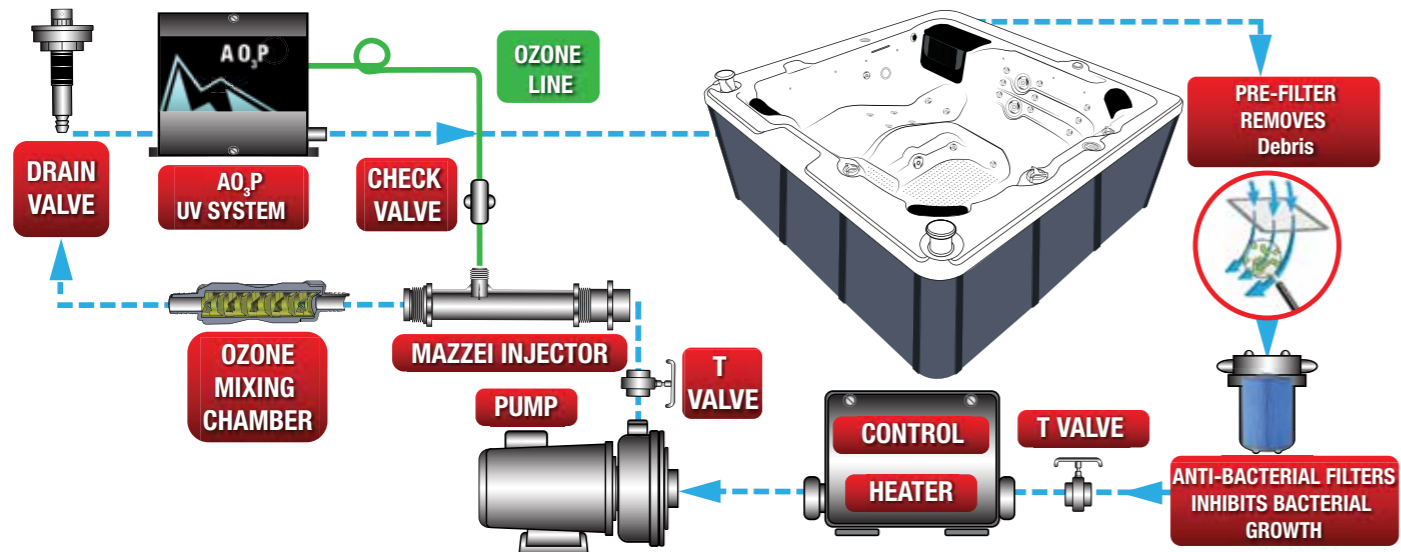
ABS SEALED BASE

The waterproof base is designed with a layer of the same infrared reflective material found on the cabinet walls. This prevents heat loss and moisture damage.



FILTRATION SYSTEM

Our Digital filtration system guarantees clear water using 75% fewer chemicals



Pre-Filter - Fine mesh screen to prevent your filters becoming clogged.

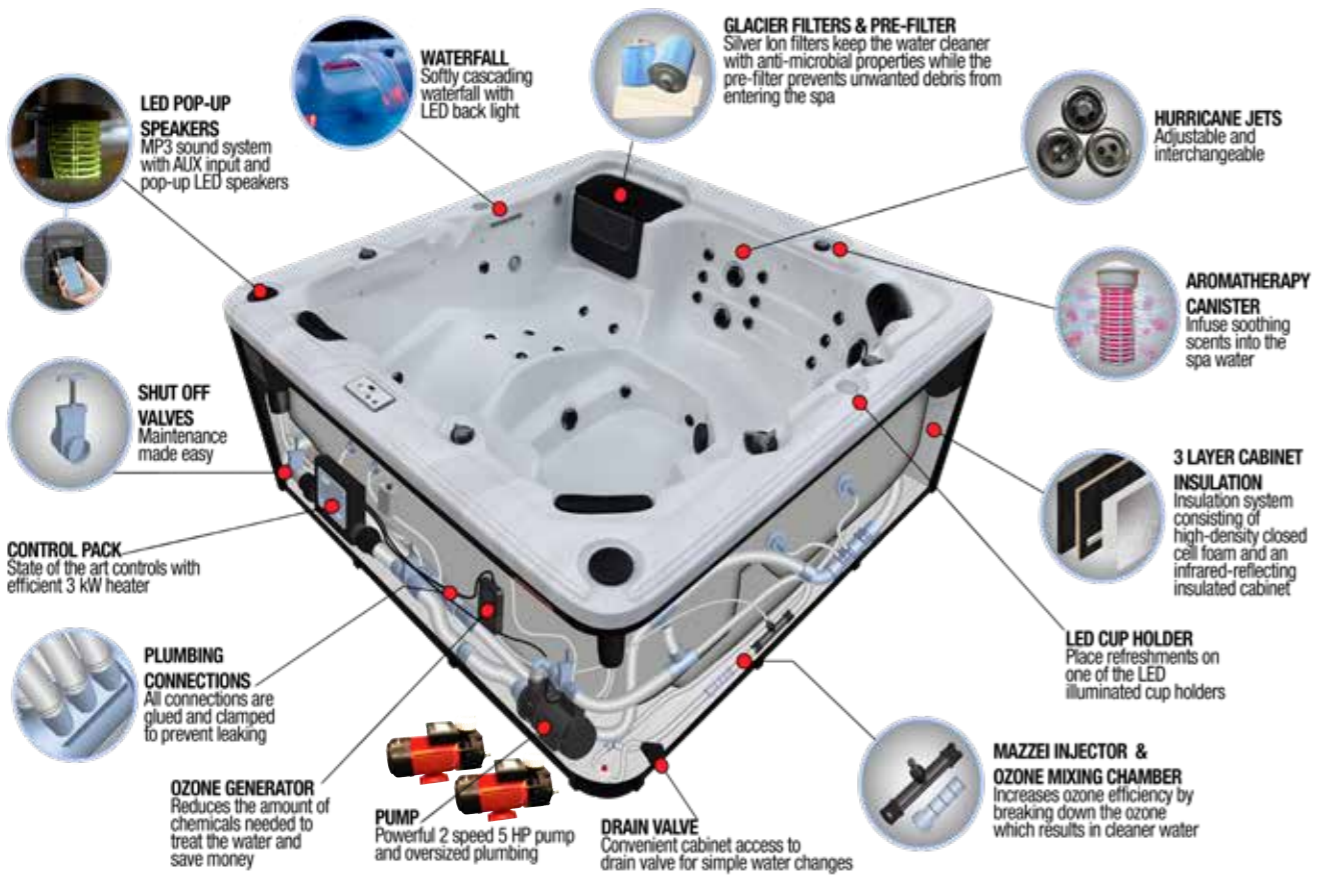
Silver-Ion - Embedded into the filter, acts as a natural disinfectant and our antimicrobial filter pleats inhibit the growth of bacteria

Mazzei Injector - Produces smaller bubbles and creates the vacuum to pull the ozonated air into the water stream

Ozone Purifier - Generates ozone to aid in the oxidation of the spa water.

Mixing Chamber - Breaks down the ozone Bubbles and helps absorb the ozone into the water.

UV - Neutralises the unabsorbed ozone and neutralises bacteria in the water.



Toronto UV
6 person spa
KH-10047
L213 x W213 x D82cm

- 5 HP, 2 Speed Pump 15amp
- 5 HP, 1 Speed Pump 15amp
- 44 powerful adjustable jets.
- Blackout Insulation
- A03P Included



100 sq ft Glacier filter with prefilter



Oversized Footwell
Oversized footwell comfortably accommodates all users feet without contact and includes foot jets.



Built-in Step
Designed to act as an easy entrance point to the spa and stippled for a better grip. Can also be used as a cool-down seat for children.

DIVERSE SEATING ARRANGEMENTS



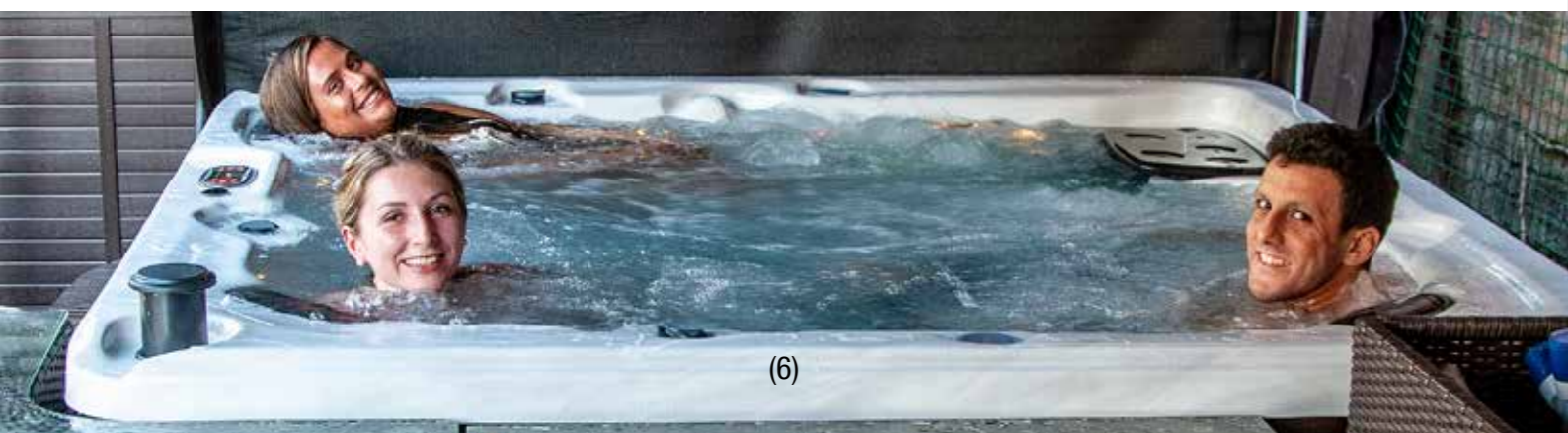
Captains Chair
Ideal seating for the primary spa user, or taller individuals. Well outfitted with jets and a comfortable LED headrest.



Barrier Free Seating
Allows users to stretch out whilst the jets are configured to massage more areas of the body compared to a specifically moulded seat.



No Float Lounger
An ergonomic lounger that can comfortably accommodate all users. Designed to keep your body mass lower without floating away.



ACRYLIC SPAS

Cambridge 5 person spa
L200 x W200 x D88cm,
1 x 5hp pump 34 Jets, LED lights, Ozone, and Cover
KH-10077

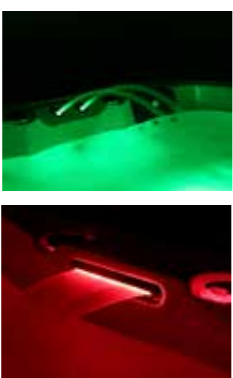


The Canadian Spa Cambridge and London SE Spas are the perfect hot tubs for you to enjoy with your friends and family. Lay back in the comfortable no-float lounger and relax while powerful adjustable hydrotherapy jets ease the knots in your back and soothe the tension in your calves.

A built-in aromatherapy system mixes warm air with aromatherapy beads to release soothing scents while premium LED lighting sets the mood.

Canadian Spa Company tubs include our Glacier water filtration system which includes Ozone water purification and Glacier Silver Ion anti-microbial filtration, ensuring crystal-clear water while limiting the amount of chemicals you need.

London 6 person spa
L213 x W213x D89cm - 2 x 5hp pumps 44 Jets, LED lights, Ozone, UV and Cover
KH-10131



(8)

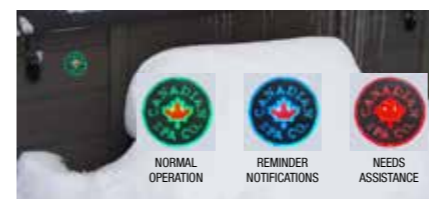
WINNIPEG UV



Winnipeg 5 person spa **KH-10059**
L200 x W200 x D82cm



- 5 HP, 2 Speed Pump 15amp
- 35 powerful adjustable jets.
- Blackout Insulation
- AO3P Included



Spa Status LED (Optional)

Our new Spa Status LED provides convenience, right at your finger tips. Check the status of your spa by looking at the colour of the LED light from afar – no more breaking your back trying to remove your cover just to see if your spa is running!



Erie 6 person spa
L213 x W213x D89cm
2 x 5hp pumps 46 Jets,
Led lights, Ozone, UV and Cover
KH-10130



(9)

PATIO SPAS



Okanagan spa 10 Jets
L160 x W160 x D73 cm
KH-10078

Our new range of Canadian Spa Patio hot tubs combines quality, affordability and reliability. These are designed to suit all your entertainment needs. These light-weight portable spas make them the ideal choice for your patio, back garden or holiday home.



Gander Spa 15 Jets
L170 x W152 x D73 cm.
KH-10098



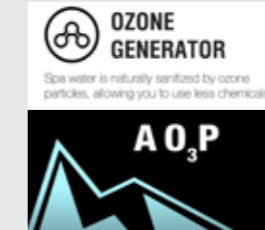
PATIO STANDARD FEATURES



13 Amp inline RCD plug with 7 metre / 20ft cable



Multi-coloured LED Perimeter lighting



Ozone & A.O.P UV system



Black locking hard top Spa Cover

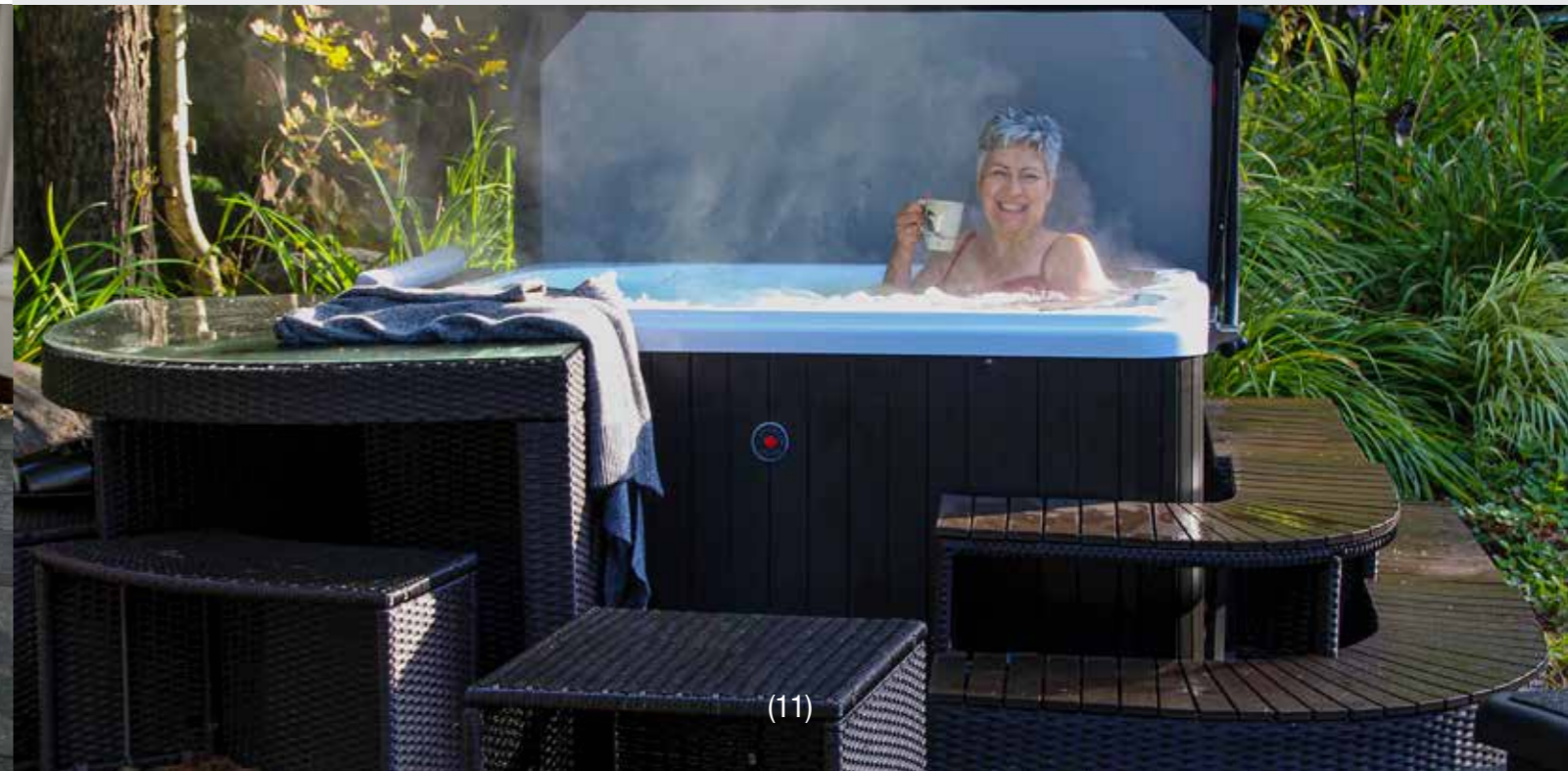


Waterproof ABS Base

Saskatoon spa 12 Jets.
L160 x W160 x D73 cm **KH-10079**



(10)



(11)

Manitoba 14 Jets
L170 x W154 x D73 cm. **KH-10132**



The Canadian Spa Company Manitoba Plug & Play patio spa fits in almost any location. This spacious but compact spa is packed with features of a full-sized spa and easily accommodates 4 adults.

It features 14 adjustable stainless steel hydrotherapy jets and is energy-efficient and easy to install – just plug it into any standard socket and start relaxing right away! The Manitoba uses 50ft² of filtration along with a built-in ozone generator to keep your water crystal clear without hassle.

The Manitoba uses 50ft² of filtration along with a built-in ozone generator to keep your water crystal clear without hassle. The multi-coloured LED lighting provides you with the perfect way to truly unwind after a long day.

All Canadian Spa Company Spas provide an unbeatable combination of great value, high-end features, and sleek modern design sure to satisfy any household.



PATIO STANDARD FEATURES



13 Amp inline RCD plug with 7 metre / 20ft cable



Multi-coloured LED Perimeter lighting



Ozone & AOP UV system



Black locking hard top Spa Cover



Waterproof ABS Base

PATIO SPAS



All Canadian Spa Company Spas provide an unbeatable combination of great value, high-end features and design which are sure to satisfy any household. Our spas come with valuable customer and technical support for the lifetime of the spa, and the knowledge that you're supporting a local company. Our spas use genuine North American made components, including Balboa, Gecko and Lucite Acrylic.

Muskoka Spa 14 Jets
L184 x W184 x D73 cm **KH-10095**



Features

- Digital Controls
 - Plugs directly into a standard 13 A household socket- Electrician not required
 - Ozone with UV water purification system
 - Glacier filtration ensures crystal clear water
 - Air venturi valves to vary the water jet pressure
 - 50ft² Antimicrobial Glacier filter
- Includes 3" to 2" hardtop cover.



The Canadian Spa Company Muskoka Plug & Play spa fits in almost any location. This roomy but compact spa is packed with features of a full-sized spa and easily accommodates 5 adults. It features adjustable stainless steel hydrotherapy jets. This spa is energy-efficient and easy to install – just plug it into an outlet and start relaxing right away!





Yukon 2 person Plug & Play spa
L213 x W100 x D74cm **KH-10021**

The Yukon Plug & Play spa is the perfect hot tub for two. Designed for customers who want a big spa experience in a small package.

Features multi-coloured perimeter LED lighting, a digital audio system with backlit pop-up LED speakers, a softly cascading waterfall, and built-in aromatherapy to ensure the ultimate spa experience.

The Yukon is easy to install and plugs directly into any standard outlet. Each of its 16 hurricane hydrotherapy jets can be easily adjusted to ensure just the right pressure.

An ozone generator along with 35 sq ft of Anti-microbial filtration makes it easy to maintain crystal clear water with far fewer chemicals.



ACRYLIC SPAS

The Montreal & Calgary Plug & Play spas fit in almost any location. These spas are spacious but compact and packed with all the features of full-sized spas and easily accommodate up to 4 adults.

These spas feature adjustable stainless steel hydrotherapy jets. 'Plug & Play' hot tubs are energy-efficient and easy to install – just plug into any outlet and start relaxing right away!

They use 50 sq ft of Anti-microbial filtration and feature a built in ozone generator to keep your water crystal clear.

The multi-coloured perimeter LED lighting, aromatherapy canister, and a cascading backlit waterfall provide you with the perfect way to truly unwind after a long day.



Calgary 4 person Plug & Play spa
L213 x W150 x D78cm
KH-10037



Kelowna 2 lounge + 2 seats
L210 x W152 x D72cm **KH-10041**

The Kelowna has a compact frame and is a perfect addition to back garden locations that have limited access.

Multi-colour LED mood lighting and a cascading waterfall create a soothing and relaxing atmosphere. An aromatherapy canister is built into the spa shell to allow for scented beads to help ease your tension and stress.

Plug & Play hot tubs can be located wherever there is access to a standard household socket.

Our tubs incorporate a water filtration system including ozone water purification and Anti-microbial filtration, ensuring crystal clear water. Insulation includes high-density closed cell foam that surrounds the shell, and an infrared-lined insulated cabinet that traps the heat inside the spa.



Bluetooth speaker system is standard



Montreal 3 person Plug & Play spa
L213 x W153 x D78cm
KH-10033





Thunder Bay 6 person spa
L219 x W219 x D82cm
KH-10030



This 6-person spa features a full-length body-form lounger, 2 deep-seating Captains Chairs, and deep multi-level seating.

The whole family will enjoy the Thunder Bay's 44 hydro-massage jets along with the perfect ambience that's created by a perimeter LED mood lighting system, softly cascading waterfall, built-in aromatherapy canister, and a digital audio system with pop-up LED speakers.

Oversized Footwell

Oversized footwell comfortably accommodates all users feet without contact and includes foot jets.



Captains Chair

Ideal seating for the primary spa user, or taller individuals. Well outfitted with jets and a comfortable LED headrest.



Victoria 6 person spa
L219 x W219 x D82cm
KH-10025

The Victoria hot tub is a truly therapeutic massage spa. It incorporates hydrotherapy, chromotherapy, skin therapy, and aromatherapy packages.

58 hydromassage jets can be adjusted in multiple combinations and degrees to suit every taste, from the gentlest touch to the deepest massage. 100ft² filtration ensures your water is always crystal clear.



STANDARD FEATURES

 ADJUSTABLE JETS	 AUDIO SYSTEM
 LED WATERFALL	 EASY TO USE CONTROLS
 AROMATHERAPY	 OZONE PURIFICATION



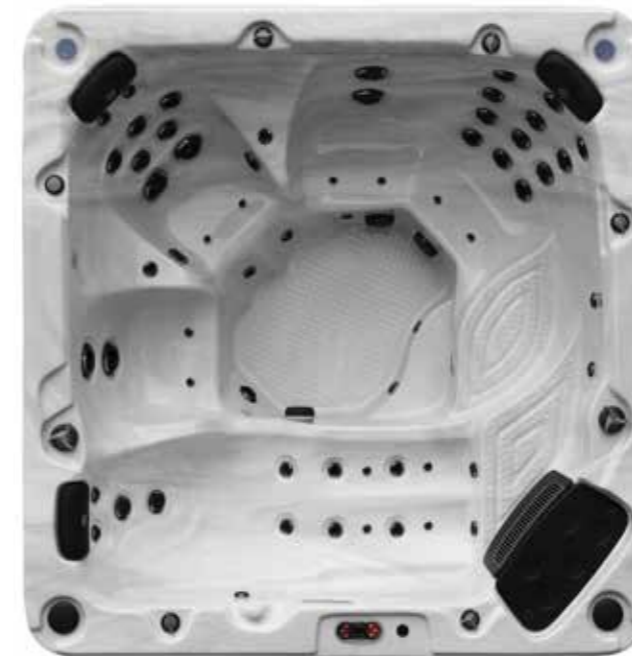
Vancouver 6 person spa
L227 x W227 x D87cm
KH-10032



The Vancouver hot tub incorporates high-quality insulation suited for the coldest of climates.

Can accommodate larger families with its 6 seat multilevel configuration including two loungers for the ultimate relaxation.

All 65 jets can be easily individually adjusted to ensure everyone receives the pressure they require.



Niagara 7 person spa
L228 x W228 x D99cm
KH-10024



The Niagara with a depth of 99cm spa is extra deep and can accommodate larger families with its 7 seat multilevel configuration including one lounger for the ultimate relaxation.

An internal step helps with entry and exit from the spa.

60 hurricane hydrotherapy jets provide a powerful massage



Alberta 7 person spa
L240 x W216 x D93cm **KH-10018**



The Alberta hot tub is packed with high-end features. 57 adjustable and interchangeable jets allow the hot tub full customisation.

This hot tub includes two captain's chairs and a lounger.



Kingston 7 person spa
L240 x W216 x D93cm **KH-10019**



This large spa is equipped with all of the high-end features that guarantee you and your guests have a great experience.

55 hydrotherapy jets are adjustable to customise your spa.



Grand Bend 9 person spa
L300 x W229 x D100cm
KH-10135

The Grand Bend is our most impressive spa to date with three 5HP pumps and 94 adjustable hydrotherapy jets. The Grand Bend provides multi-level seating for 9 people featuring a no-float lounge and two Captain's Chairs to accommodate a number of users with varying needs.

- Features perimeter multi-coloured LED mood lighting
- Cascading waterfall
- Built-in aromatherapy canister.
- Three powerful 5HP (16.4 amp) pumps
- Oversized 2.5" intakes that guarantee consistent performance
- Equipped with a digital MP3 audio sound system
- Pop-up LED speakers, built in Bluetooth audio streaming
- Insulation includes high-density Black out closed cell foam that surrounds the shell, heat retention blanket



Grand Rapids Inflatable Spa

175cm diameter x 74cm **KP-10014**

- Includes LED and Aroma Therapy
- 110 air jets
- Rapid heating system
- Depth makes for easier body submersion

Our inflatable spa is one of the deepest on the market with a depth of 74cm.

You can completely submerge their shoulders and neck for a truly relaxing massage. Our unique design makes these portable spas easy to assemble and the perfect addition to your patio, back garden, holiday home or cottage.

The air jets help relieve the stress and tension of everyday life. These spas plug directly into any standard household outlet so no electrician is required.

The external Portable Control Unit (PCU) equipped with Anti-microbial filtration housing allows the spa water to be heated to 39°C (103F). Includes an aromatherapy unit.



Lockable 6-inch inflatable cover to ensure maximum insulation and security.



Integral reinforced heavy bladder with 'O' Beam wall construction for strength and better insulation.



Inflatable wall with protective vinyl cover



- Control Unit
- Easy to use
 - 3 Speed
 - 7 metre cable
 - Aromatherapy
 - Anti-microbial Filter

Swift Current foam wall spa (V2)

with Hard top Cover
184cm diameter x 74cm
KP-10008

- Seating for 5 people
- 125 air jets
- Rapid heating system
- Digital control panel



Black hard top portable covers: Swift Current **KC-10051**



STANDARD FEATURES



Spas come with a lockable 6 inch inflatable cover which is tapered to allow rain water run-off. Our cover keeps the spa sealed to stop heat loss.



Aromatherapy Dispenser is included as standard in each spa



Anti-microbial Filters keep spa water cleaner by inhibiting bacterial growth



13 Amp inline RCD plug with 7metre/20ft cable



Thermal blanket for quicker heating and better insulation

SWIM SPAS

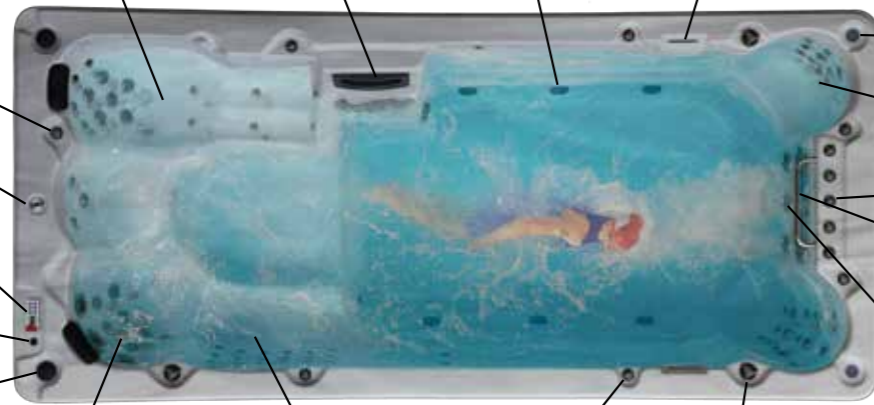


Powerful swim lane jets
Current River jets deliver a powerful continuous stream of water to aid straight and level swim



SWIM SPA FEATURES

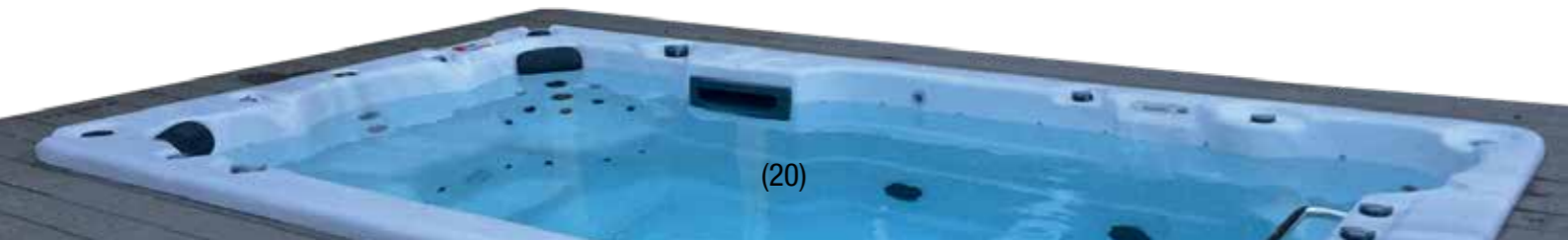
- 1. LOUNGER**
Integral lounger to let you lie back and receive a full body massage
- 2. FILTER**
A built-in Ozone Purifier works with our 10-step, 200 square foot filtration process to keep your Spa's water crystal clear with little maintenance required.
- 3. PUMP SUCTIONS**
Ensures continuous flow of water
- 4. WATERFALL & PERIMETER LIGHTS**
Helps to create a relaxing spa mood to soothe your mind
- 5. LED CUP HOLDERS**
Illuminated placeholder for a glass of your favourite drink (plastic glasses only please)
- 6. DEEP SOAK SEATS**
Take a rest from swimming and relax tired muscles in two deep soak seats
- 7. SWIM JETS AIR CONTROLS**
Adjust the force of the "river jets" with individual air control valves
- 8. GRAB RAIL**
Use the grab rail to aid stability. Ideal for young people or beginners learning to swim
- 9. SWIM JETS**
Current generator jets delivers a powerful continuous stream of water to aid straight and level swim
- 10. DIVERTER VALVES**
Controls the water pressure between the different seats by diverting the water flow around the spa
- 11. AIR FLOW CONTROL(S)**
Adjust the massage action and jet pressure by changing the air flow
- 12. BENCH SEAT**
Additional seat with back jets to give a broad back massage
- 13. CAPTAIN'S CHAIR**
Specially sculpted 'Captain's' Chair for the ultimate back massage
- 14. POP UP LED SPEAKERS**
Compatible with any MP3 players or smart phone. Each pop up speaker is illuminated to match the LED perimeter lighting
- 15. VOLUME CONTROL**
Allows you to control your music volumes from the comfort of the spa
- 16. TOPSIDE CONTROL PANEL**
Easy to use control panel allows for complete control of the pump, blower, temperature or lighting
- 17. TETHER POINT**
Allows you to tether a swim pole in order to give extra resistance when swimming against the flow of the jets
- 18. AROMATHERAPY**
Place scented beads into the canister to infuse the jet stream with therapeutic scents



St. Lawrence 13ft swim spa
L390 x W228 x D137cm **KS-10004**

The 13 ft. St. Lawrence Sport Pool is perfect for swimming and aqua-aerobics alike. It has 3-river resistance jets, creating our unique swim lane system. The 3-water pumps and large flat floor make it ideal for a wide range of activities, like jogging against a gentle current and experiencing the benefits of resistance training.

The water flow is fully adjustable, allowing you to customise it for any level of activity. The 13 ft. St. Lawrence also functions as a hot tub, so after a good swim, relax with a soothing massage in one of the four multi-jet Captains' Chairs or a full body 12 massage jet stand up area. The built-in digital audio system with pop up speakers provides music entertainment, perimeter multi-coloured LED lighting and 2-cascading waterfalls enhance relaxation. The waterfalls also act as a visual aid to keep your pace, all in the privacy of your own home.



St. Lawrence 16ft swim spa
L500 x W228 x D137cm **KS-10005**

The St. Lawrence Swim Spa features a unique Swim Lane system that uses 3 resistance jets and 2 profile aligning jets to ensure that you receive the preferred pressure and support needed for swim exercise.

- 4 hydro-massage seats and 1 full length lounger. 72 massage jets
- Insulation includes high-density closed cell foam that surrounds the shell and an infrared-lined insulated cabinet that traps the heat inside the spa making it more efficient

Includes two-part hard top cover, Anti-microbial filter set, fibreglass tether pole for resistance swimming and aerobic exercise.



Ideal for learning how to swim



Perfect for exercise and practice



Galvanised steel frame
Sturdy integral galvanised steel frame

St. Lawrence 20ft fully featured dual temperature/zone swim spa and hot tub
L594 x W228 x D137cm. **KS-10006**

Enjoy the luxury of the 20 ft St Lawrence Swim Spa with dual zones for both a hot tub and a swim spa experience. Each side can be controlled independently to allow for different temperatures. The unique jet system in the swim spa provides controllable resistance for swimming and aqua-aerobics. After exercising, relax in the hot tub while adjustable hurricane jets target your back, calves and feet.



SPA FURNITURE



SQUARE FURNITURE

Our range of furniture is designed and built to fit around your spa. Whether you want to add comfy seating to transform it into both a spa and seating area, or clever storage to ensure your towels stay nice and dry, we have products you can pick and choose to make it perfect.



Corner steps
KF-10025



Straight planter
KF-10027



Straight side table
KF-10028



Straight love seat
KF-10029



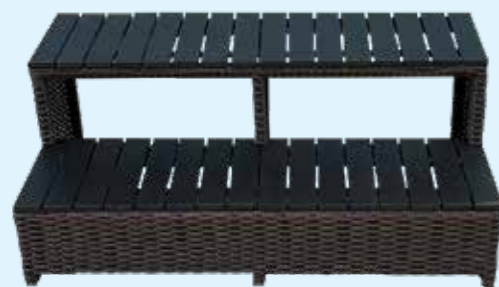
Corner bar & stools
KF-10024



Straight bar & stool
KF-10035

RATTAN STRAIGHT STEPS

Our straight steps are perfect for providing easy access into your hot tub with a range of sizes to suit different spa dimensions:



- Step size Width 85 x D57 x H43 cm - Fit Spa Size 200cm / 79": **KF-10031**
- Step size (Width 100 x D57 x H43 cm - Fit Spa Size 213cm / 84": **KF-10032**
- Step size (Width 106 x D57 x H43 cm - Fit Spa Size 218cm / 86": **KF-10033**
- Step size (Width 115 x D57 x H43 cm - Fit Spa Size 228cm / 90": **KF-10034**
- Step size (Width 130 x D57 x H43 cm - Fit Spa Size 244cm / 96": **KF-10044**



ROUND FURNITURE

Our round furniture is not only designed to fit perfectly around your round spa. It also offers clever and convenient options from comfy seats to handy storage styles that will provide a safe, dry haven for your clothes and towels.



Curved step
KF-10005



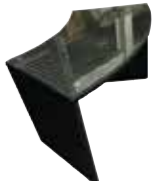
Curved side table
with storage
KF-10003



Curved love seat
with cushions
KF-10001



Curved planter
KF-10004



Curved bar table
with glass top
KF-10002



OCTAGONAL FURNITURE

Octagonal furniture fits Muskoka spa 188cm (74")



Sofa
with cushions
KF-10063



Bar table
with glass top
KF-10064



Side table with storage
KF-10065



Planter
KF-10066



Step
KF-10067

SPA STEPS



• Fits Round Spas



• Fits Square Spas



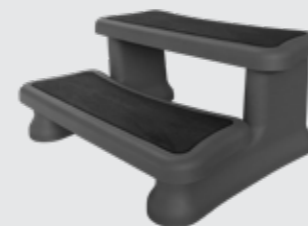
• Non-slip mat



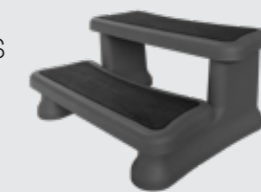
• Weather resistant



• Easy to assemble



Universal Black Spa Steps
KF-10058
W 90cm x H40cm x D60cm



Classic Black Spa Steps
KF-10061
W 72cm x H40cm x D52cm

GAZEBOS

Fraser
Free standing Gazebo
KF-10052

H292 x W337 x D337cm
CHOCOLATE
Synthetic wood to ensure durability.
2 louvre sides for privacy and protection.
Includes bar and 4 stools.



GARDEN SANCTUARY

The Fraser Gazebo creates a safe environment for you to enjoy your spa all year round!

Complete your hot tub purchase by turning your home and garden spa into a sanctuary with our Fraser gazebo.



Roof Dome Box
Strengthen the Gazebo by using a reinforced dome box



Metal Straps
Strengthen the Gazebo by using steel strapping throughout the roof and rafters



FRASER GAZEBO STANDARD ROOF FEATURES



UV Roof Panels
These panels are treated with UV protection to withstand the harshest of climates.



Wall & Louvre Set
Create more privacy by adding an additional wall and louvre panel to the 3m x 3m Gazebo.
Chocolate KF-10048



SAUNAS



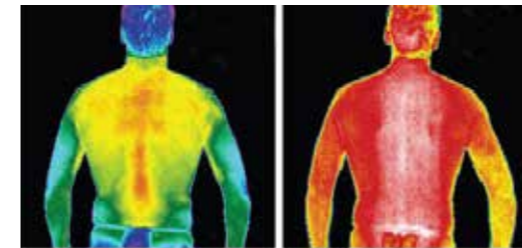
Chilliwack Sauna
W104 x D97 x H191cm
1485w - 5 Heaters
KY-10007

Banff Sauna
W146 x D117 x H191cm
2005w, 8 Heaters
KY-10009

Aspen Sauna
W137 x D137 x H191cm
1805w - 6 Heaters
KY-10011

Whistler Sauna
W177 x D132 x 191cm
2605w -10 Heaters
KY-10010

HOW SAUNA HEATING WORKS HEATING THE BODY CORE



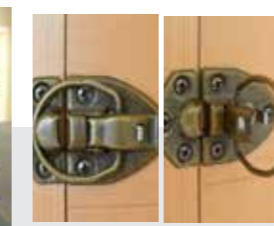
All sauna heating systems work in the same way to heat the core of the body.

STANDARD FEATURES

SOLID FRAME
Solid wall/stud wall, not particle or MDF board, stronger structure, less chance of warping.



Aromatherapy Oil Dispenser



Easy Clip system



Low EMF



Cool Handle



Exterior Lighting



Wooden floor



Speakers



Fresh Air Vent



High output LED Light

CANADIAN SPA - MICA FAR INFRARED

MICA Heaters heat evenly and are more efficient than standard carbon fibre heaters and with low EMF levels and no off gassing. They are very effective at heating your body core and helping your body detox.

EVEN SURROUND HEATING

In your Canadian Spa Far Infrared Sauna only about 20% of the heat goes to heat the air and the other 80% directly heats your body. The result is deeper tissue penetration. Health benefits start at lower heat, starting 32°C. You can set your sauna at a more comfortable temperature.

DIGITAL CONTROLS

Easy to view and change temperature settings with our digital control panel.

TIMER SETTING

Adjust the amount of time you wish to spend in the sauna at your desired temperature.

PRE-HEAT SETTING

Schedule your sauna time everyday by setting up a pre-heat time so that it is always ready.



Fig 1. POWER & HEATING lights illuminated to show sauna in operation



Fig 2. Press SET button and hours and minutes are displayed

FREE-FLOW CORE

Ensures steady flow



QUALITY FILTERS

Rigid and long-lasting 100% polyester Reemay filter fibres

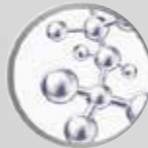
FILTERS

Increase the cleaning power of your spa with an antimicrobial spa filter! Our filters are infused with antimicrobial protection to inhibit the growth of bacteria upon the cartridge and extend the filter's life. Silver ion technology is added into the end caps and fabric of this filter, making it the most advanced filter cartridge available. Break the cycle of bacteria growth when the spa is not in use and the high demand of chemicals once it starts up. Filter should be changed every 4-6 months for best results.



ANTIMICROBIAL TECHNOLOGY

Inhibits the growth of bacteria, mould, and fungi that can cause contamination of the filter cartridge



SILVER STREAM

Natural silver ions stop harmful bacteria from building up inside your filter and entering your spa water

CHEMICALS



Deluxe Chemical Kit: 50 Test strips, 680gm Chlorine, 750gm pH up, 1Kg pH down, 800gm Alkalinity, 500ml Foam Free, 500ml Stain & Scale, 500ml Spa Clear. **KA-10089**



Starter Chemical Kit: 50 Test strips, 500gm Chlorine, 500gm pH up, 500gm pH down, 500ml Foam Free, Manual & App Included. **KA-10122**



Chlorine Granules 500g KA-10123	Alkalinity Booster 500g KA-10146	pH Down 1Kg KA-10050	pH Up 750g KA-10051	Foam Free 500ml KA-10054	Chlorine Tablets 800g KA-10048	Bromine Tablets 700g KA-10103	Filter Free Cleaner 1Kg KA-10011
---	--	--------------------------------	-------------------------------	------------------------------------	--	---	--



Fix a leak 8 OZ KK-11188	Scale Control 500ml KA-10055	Spa Clear 500ml KA-10053	Test Strips (50pk) Chlorine, pH & Alkalinity KA-10052	Spa Shock 1Kg KA-10047	Chlorine Granules 680g KA-10134	Whirlpool Rinse 500ml KA-10074	Spa Flush Sachet 15ml KA-10164
------------------------------------	--	------------------------------------	---	----------------------------------	---	--	--

Chamomile KA-10015	Green tea KA-10014	Lavender KA-10017	Rose KA-10013	Aromatherapy spa scents 6 Pack: KA-10039 Chamomile x 1, Green tea x 1, Rose x 1, Lavender x 3	Canadian Spa Company Spa Ball. KA-10003
------------------------------	------------------------------	-----------------------------	-------------------------	---	---

The Canadian Spa Glacier Filters: Antimicrobial filters with a silver ion slow release water purification system available in twinpack + pre-filter screens or single Glacier filter. These filters are compatible with the Canadian Spa Grate filter system.



2 x Glacier Antimicrobial Filters with 2 pre-filter set **KA-10032**



Pre-Filter screens **KA-10031**



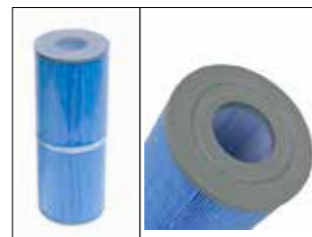
Antimicrobial 1 x Glacier Filter **KA-10082**



Antimicrobial Filter 4 pack fits Grand Rapids Swift Current **KA-10010**



Antimicrobial Swim Spa filter 4 pack **KA-10009**



Antimicrobial 50 ft² Slip **KA-10004**



Antimicrobial 50 ft² SAE Threaded **KA-10005**



Filter Cleaning Brush Adapter (Inc.) **KA-10154**



Antimicrobial 35 ft² Slip (for use with Yukon spa) **KA-10007**



50 ft² Slip **KA-10034**



50 ft² SAE Threaded **KA-10033**



SPA CHEMICAL START UP GUIDE

Balance water according to test strip readings	Balance pH with pH Up or pH Down	Balance alkalinity with Alkalinity Booster	FOAMING Add Foam Free as needed	REPLACE FILTER According to replacement schedule & use
Add chlorine as per test readings	Circulate spa and retest water	SPA BALL replace Spa Ball	FILTER FREE Soak filter and rinse	Stain and Scale Control
				Spa Clear for cloudy water

HOT TUB COVERS



We manufacture our covers for our spas and replacement covers with all the features included as standard. All our covers carry the ASTM (American Society for Testing and Materials) Standard to ensure peace of mind. We carry a large stock of the most popular sizes, so we can fulfil quickly.



Cover Comparison

Canadian Spa Cover:
25% better insulation
No heat loss through middle seam
Easy to lift cover from all sides
Skirt completely seals spa

Other Covers:
Thinner cover
Less heat efficient cover
No side handles
Shorter skirt does not seal spa

www.canadianspacompany.com

8 Locking Straps

Eight locking straps secure your cover against strong winds or unwanted access

canadianspacompany.com

Full Steam Seal

Compare our full length steam seal which insulates the entire fold of the cover and reduces heat loss

canadianspacompany.com

Metal Channel

Two parallel C-channels provide support along the entire length of the cover to protect against heavy snow loads or accidental damage

canadianspacompany.com

Drainage

Drainage grommets allow for trapped moisture to escape which keeps your cover lightweight

canadianspacompany.com

5" Skirt

A five inch skirt keeps heat inside with a snug seal that extends all the way around the spa

canadianspacompany.com

Vapour Barrier

Our 6 mil vapour barrier protects against water absorption better than the industry standard 3 mil barrier.

canadianspacompany.com

ROUND COVER SIZES

BROWN	78" x 78" / 198 x 198cm Brown Spa Cover ROUND KC-10021
	80" x 80" / 203 x 203cm Brown Spa Cover ROUND KC-10022

GREY	78" x 78" / 198 x 198cm Grey Spa Cover ROUND KC-10023
	80" x 80" / 203 x 203cm Grey Spa Cover ROUND KC-10024

STANDARD SQUARE COVER SIZES

BROWN	78" x 78" / 198 x 198cm Brown Spa Cover KC-10001	80" x 80" / 203 x 203cm Brown Spa Cover KC-10002	82" x 82" / 208 x 208cm Brown Spa Cover KC-10003	84" x 84" / 213 x 213cm Brown Spa Cover KC-10004
	86" x 86" / 218 x 218cm Brown Spa Cover KC-10005	88" x 88" / 223 x 223cm Brown Spa Cover KC-10006	90" x 90" / 228 x 228cm Brown Spa Cover KC-10007	92" x 92" / 233 x 233cm Brown Spa Cover KC-10008

GREY	78" x 78" / 198 x 198cm Grey Spa Cover KC-10011	80" x 80" / 203 x 203cm Grey Spa Cover KC-10012	82" x 82" / 208 x 208cm Grey Spa Cover KC-10013	84" x 84" / 213 x 213cm Grey Spa Cover KC-10014
	86" x 86" / 218 x 218cm Grey Spa Cover KC-10015	88" x 88" / 223 x 223cm Grey Spa Cover KC-10016	90" x 90" / 228 x 228cm Grey Spa Cover KC-10017	92" x 92" / 233 x 233cm Grey Spa Cover KC-10018

For all other Cover sizes check our website for details

COVER CLIP (SET 4 X) TWIST KEY



Cover locks set of 4 **KK-10843**

COVER CLIP & TWIST KEY



COVER CLIP FLAT KEY



Cover lock x 1 **KK-10819**

Cover locks x1 **KK-10354**

COVER GUARDS



- Protect your cover from snow
- Elasticated skirt for better fitting
- Waterproof, no middle seam
- Prevents cover bleaching
- UV resistant
- Protects from tree sap

84"/ 213cm round
Cover guard
KA-10022

84"/ 213cm square
Cover guard
KA-10020

96"/ 243cm Square
Cover guard
KA-10021

78"/ 200cm square
Cover guard
KA-10108

90"/ 228cm square
Cover guard
KA-10109

96"/ 243cm x 84" /213cm
Rectangular cover guard
KA-10110

COVERS LIFTERS



Bottom mount cover lifter **KA-10026**

- Mounts directly to spa
- Aluminium
- Fits up to 95" wide spas
- Requires 17" clearance
- Max spa depth 36"



Top mount cover lifter **KA-10027**

- Mounts directly to spa
- Aluminium
- Fits up to 95" wide spas
- Requires 12" clearance

Cradle cover lifter **KA-10060**

- Fits underneath spa
- Ideal for Round/Octagonal Covers
- Aluminium
- Fits up to 92" wide spas
- Requires 24" clearance



Basket cover lifter **KA-10061**

- Ideal for Swim Spas
- Mounts directly to spa
- Aluminium
- Fits up to 94" wide spas
- Requires 12" clearance



Roller cover lifter **KA-10029**

- Mounts directly to spa
- ABS construction
- 3 rollers per side up to 228cm
- 4 rollers per side over 230cm
- Requires 1/2 the folded size for clearance
- Sold in pairs



Top mount cover
Bottom mount cover lifter
ABS Bracket
KK-10140



Top mount cover
Bottom mount cover lifter
Fixing Kit
KK-11079

SPA PILLOWS



Hurricane Bread Pillow
KK-10145



Spa Pillow (Rectangular)
KA-10138



Black Ice Rectangle Pillow
KK-10735

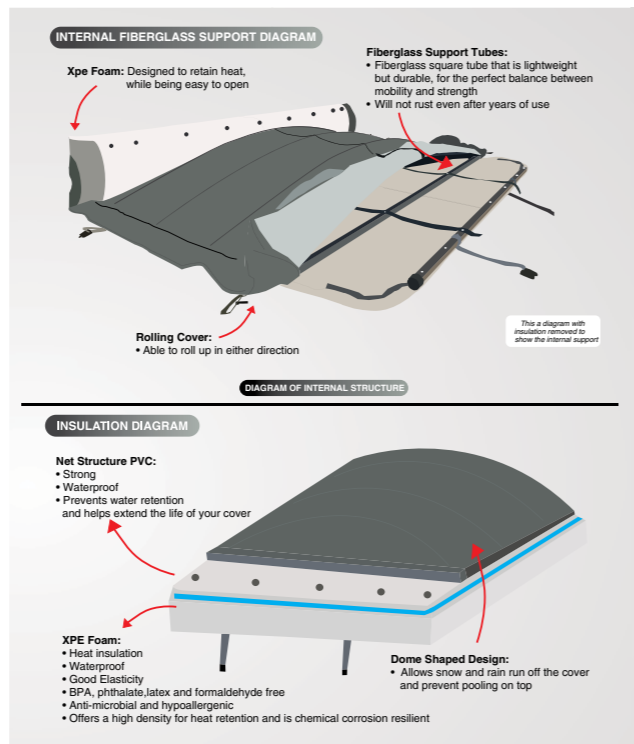
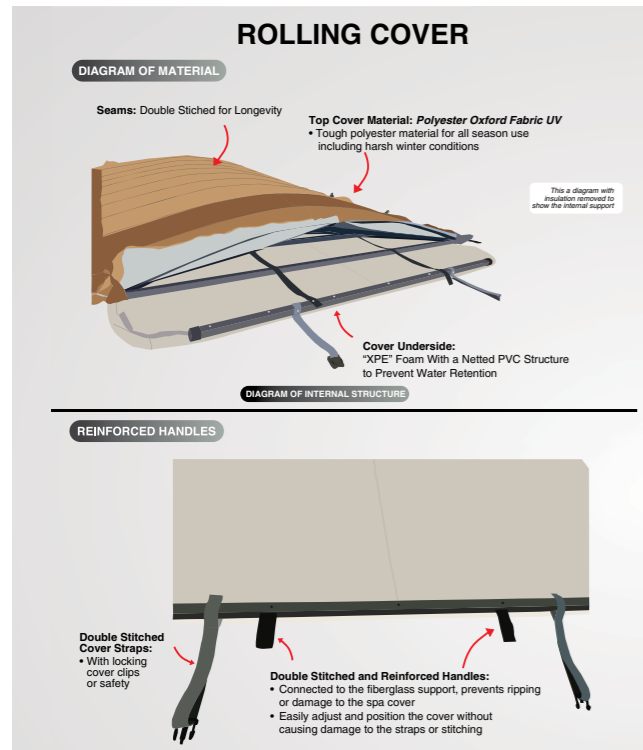


Spa Pillow (Half Round)
KA-10137

ROLLING COVERS



Roll covers make it easier than ever to ensure that your swim spa is maintained correctly. Long gone are the days of thick heavy covers which required so much effort and struggle to remove, that you ended up neglecting your much-loved swim spa. The Roll On Roll Off cover is made from carbon fiber making it 25% lighter than other rolling spa covers, resulting in super easy use for anyone. In fact, they are designed to enable one person to roll the cover off in less than a minute. This cover is cleverly designed to have built-in eyelets that allow air to escape as it rolls up so it does not get bigger and bigger.



We ensure that our products are of the highest quality, and the Roll Covers are constructed with non-collapsible supports, allowing it to keep its shape in all weather conditions.

The cover is made from durable, UV protected, waterproof and weatherproof material which is securely double stitched on all the seams, to ensure the highest level of protection, even during strong winds. In addition, the Roll On/ Roll Off cover has triple thermal shield technology, which includes 3 distinct insulated layers and 2 insulating air pockets, meaning that heat is locked in, as a complete seal is created. In fact, 97% of the swim spa's infra-red heat is reflected back into the swim spa which makes the cover the most insulated part of the swim spa. This lowers the energy consumption and cost of your spa.



CANADIAN BBQ SMOKER GRILLS



Beaver 450 sq" **KG-10001**



Moose 750 sq" **KG-10002**



Bear 1000 sq" **KG-10003**

THE ULTIMATE 8 IN 1
wood pellet technology offers all you need for grilling.

- Grill
- Sear
- Bake
- Barbecue
- Smoke
- Braise
- Roast
- Char-grill

GRILLS

Enhance your grilling experience, greater flavour, easier to operate Canadian grill wood pellet barbecues are fueled by 100%-natural BBQ wood pellets.

The digital control board ignites the grill and allows you to set the cooking temperature from 180°F to 475°F.

Fan-forced convection cooking eliminates the need for a rotisserie and creates a versatile environment for grilling, roasting, smoking, braising and baking.



Maple



Apple

PELLETS

Canadian Grill premium wood pellets are made from 100% natural, food-grade hardwood to ensure that these pure wood pellets give the perfect burn for optimal wood fired flavour.

Canadian Grill premium wood pellets are made in Canada and their production is overseen from the sawmill to the shelf to provide the cleanest, healthiest fuel source available with limitless flavour combinations.

Canadian Grill premium blend of hardwoods have the compressed cell structure necessary for a balanced, dependable burn.

Canada has some of the world's highest quality hardwood trees.

We're pleased to bring you a pellet that is 100% natural with no artificial flavours of any kind. No binding substances, chemicals or glue.



Cherry



True North

CUSTOMER SERVICE



In the unlikely event that a customer experiences an issue we provide multiple channels to contact us. A specific ticket number will then be assigned to the customer/issue, which enables us to have all information in one place, from order status, any outstanding customer service issues to previous customer history. Based on the issue we then either send one of our local technicians or ship the replacement part to the customer. This is followed up with a short email to confirm that the job was completed to their satisfaction.



MAINTAINING YOUR SPA

It is important to keep your spa working efficiently. We recommend a Health Check twice yearly.

Maintenance Packages:

- Pipe clean, Spa Shock & Anti Scale flush
- Filters removed and cleaned
- Electrical consumption test
- Plumbing leak check
- Inside cabinet hoovered & cleaned
- Spa water emptied, spa cleaned, hoses vacuumed
- Cabinet Panels washed & polished (subject to access)
- Acrylic surface wiped/polished clean
- Components left drained
- Spa refilled with water
- Plumbing bled of any air locks
- Water chemistry checked
- Cover cleaned & polished

	SPRING	SILVER	GOLD	PLATINUM	WINTER
• Hot tubs KL-10008					
• Swim Spas KL-10027					
• Hot tubs KL-10015					
• Swim Spas KL-10025					
• Hot tubs KL-10014					
• Swim Spas KL-10024					
• Hot tubs KL-10029					
• Swim Spas KL-10030					
• Hot tubs KL-10012					
• Swim Spas KL-10026					

SERVICE PORTAL

Our service portal has useful information on your spa. The FAQ section provides answers to your hot tub questions. Submit a ticket in our system and our global team will effectively solve your issue quickly and efficiently 24/7.

Need assistance? Visit our Service Portal:
support.canadianspacompany.com



SPA ACCESSORIES



Spa Vacuum Deluxe Kit for hot tubs and Swim Spas KA-10002



Portable Control Unit V2 KK-10740



Hot Tub Submersible 1/2 HP Pump, with 10M reinforced drain Hose KA-10141



Vinyl Repair Kit KA-10142 Repairs Inflatables, Covers, Booster/Spa Pillows, Liners



Waterproof playing cards KA-10035



Leaf Skimmer KA-10170



Canadian Spa water filled booster seat. KA-10019



Floating Colour LED with Remote KA-10140

HOT TUB PARTS

Canadian Spa Company can service and repair all makes and models of hot tubs and swim spas. Most spas can be retro fitted with our electrical and plumbing parts.

POSITIONING OF YOUR SPA



Local Regulations:

There may be certain restrictions and/or requirements that are particular to your locality. If in doubt, check with your council.

Delivery Passageway:

The spa will arrive as a unit, and cannot be disassembled. Ideally the spa will be placed on a trolley, either on its side or on its base.

The unit will then be rolled into place easily crossing grass, gravel, and small terrain anomalies.

If your access does not meet these conditions, or in the case of other obstacles (steps, fences, walls, steep hills, etc.) contact Canadian Spa Company

THERE ARE 2 DIFFERENT METHODS OF DELIVERY TO CHOOSE FROM:
*SERVICES VARY BY LOCATION

CURBSIDE

BACKYARD

<https://youtube/6-HNPIrDpT4>

Our couriers will arrange with you for a convenient time to drop off your spa

Kerbside Drop Off



Back Garden Placement



SPA SPECIFICATIONS*

<p>OKANAGAN 10 JETS Pack Size: 176 x 75 x 160cm Weight: 150Kg. Amperage: 13A KH-10078</p>	<p>SASKATOON 12 JETS Pack Size: 162 x 75 x 180cm Weight: 140Kg. Amperage: 13A KH-10079</p>	<p>GANDER 15 JETS Pack Size: 154 x 75 x 186cm Weight: 170Kg. Amperage: 13A KH-10098</p>	<p>MANITOBA 14 JETS Pack Size: 156 x 75 x 188cm Weight: 170Kg. Amperage: 13A KH-10132</p>
<p>MUSKOKA 14 JETS Pack Size: 196 x 75 x 203cm Weight: 217Kg. Amperage: 13A KH-10095</p>	<p>YUKON 16 JETS Pack Size: 225 x 76 x 102cm Weight: 190Kg. Amperage: 13A KH-10021</p>	<p>KELOWNA 20 JETS Pack Size: 225 x 76 x 153cm Weight: 240Kg. Amperage: 13A KH-10041</p>	<p>CALGARY 24 JETS Pack Size: 225 x 80 x 152cm Weight: 230Kg. Amperage: 13A KH-10037</p>
<p>MONTREAL 24 JETS Pack Size: 225 x 80 x 155cm Weight: 230Kg. Amperage: 13A KH-10033</p>	<p>WINNIPEG 35 JETS Pack Size: 201 x 82 x 211cm Weight: 320Kg. Amperage: 25A KH-10159</p>	<p>CAMBRIDGE 34 JETS Pack Size: 215 x 90 x 215cm Weight: 260Kg. Amperage: 25A KH-10077</p>	<p>LONDON SE 44 JETS Pack Size: 215 x 90 x 233cm Weight: 340Kg. Amperage: 32A KH-10131</p>

SPA SPECIFICATIONS

<p>ERIE SE 46 JETS Pack Size: 215 x 90 x 233cm Weight: 340Kg. Amperage: 32A KH-10130</p>	<p>TORONTO UV 44 JETS Pack Size: 215 x 84 x 225cm Weight: 380Kg. Amperage: 32A KH-10047</p>	<p>THUNDER BAY 44 JETS Pack Size: 221 x 84 x 231cm Weight: 410Kg. Amperage: 32A KH-10030</p>	<p>VICTORIA 44 JETS Pack Size: 221 x 84 x 231cm Weight: 410Kg. Amperage: 32A KH-10025</p>
<p>VANCOUVER 66 JETS Pack Size: 229 x 89 x 239cm Weight: 420Kg. Amperage: 32A KH-10032</p>	<p>NIAGARA 49 JETS Pack Size: 230 x 101 x 230cm Weight: 480Kg. Amperage: 32A KH-10024</p>	<p>KINGSTON 55 JETS Pack Size: 230 x 96 x 253cm Weight: 338Kg. Amperage: 32A KH-10019</p>	<p>ALBERTA 57 JETS Pack Size: 220 x 98 x 253cm Weight: 349Kg. Amperage: 32A KH-10018</p>
<p>GRAND BEND 94 JETS Pack Size: 242 x 102 x 302cm Weight: 620Kg. Amperage: 48A KH-10135</p>	<p>* Note: 'Pack Size' includes: packaging, pallet, and cover. Add 40 cm. extra to pack size width to ensure access</p>		

BACK GARDEN DELIVERY FORM

Back Garden Delivery Form
This form is to be filled out at the time of delivery and must be returned to the courier. It is used to ensure the spa is delivered to the correct location and that the customer is satisfied with the service.



<p>ST LAWRENCE 13' SWIM SPA 73 JETS Pack Size: 392 x 230 x 149 cm Weight: 1089Kg. Amperage: 50A. KS-10004</p>	<p>ST LAWRENCE 16' SWIM SPA 72 JETS Pack Size: 502 x 230 x 149 cm Weight: 1360Kg. Amperage: 50A. KS-10005</p>	<p>ST LAWRENCE 20' SWIM SPA 73 JETS Pack Size: 596 x 230 x 149 cm Weight: 1630Kg. Amperage: 1 x 50A + 1 x 32A. KS-10006</p>
--	--	--