



CIVIL ALCHEMY
RETAIL CATALOG VOLUME 3

ABOUT US



Founded by Kelley Hall-Barr, along with her son, Ian VanDam, Civil Alchemy first emerged as a retail concept with the opening of its brick and mortar store in September 2017. Driven by high quality and utilitarian lifestyle goods, we are dedicated to slow fashion-curating timeless products that don't go in and out of fashion with the trends. Our intention has always been to offer functional and useful goods to the retail market. We are excited to share some of our favorites with you and your business.

Inspired by nature, Kelley is ready to share her concepts of simplicity and function (always over form.) When not running the store, Ian travels regionally and globally, seeking out like minded artisans and makers, forging relationships with creatives all around the world, allowing our design house to collaborate on both a local and international level.

In the summer of 2018, Kelley and Ian launched Truly Floral Spirits, a sister company that focuses on botanically infused spirits. What started as an in-house gin for the shop grew into its own brand. Their first product, Truly Floral Blue Gin (the first of a trilogy of gins) can be found in-house as well in bars across Missouri and soon throughout the midwest. Truly Floral Blue features violet, lavender, juniper, and other natural botanicals.

The Barrs live in Webster Groves, Missouri, a midwestern, main street town, just outside the city limits of Saint Louis. Committed to the desire to build a thriving community, the Barr Family redeveloped and restored a row of century old buildings right down the street from their home, which houses both Civil Alchemy's storefront, as well as John Barr's "Frisco Barroom," a popular corner bar and restaurant.

The family spends their nonworking time enjoying some of their other passions in life, such as hiking, fly fishing, and relaxing with friends and family at their lake house in Northern Michigan (where Kelley grew up and draws much of her inspiration.)

Simply put, Civil Alchemy is a family brand that puts thought and heart into its creation and curation of products, always considering life experience over fashion, and respecting nature as art.

-Kelley and Ian

GOODS

JEWELRY
LEATHER BAGS
LINEN HAND TOWELS
WOOL SCARVES
LINEN SCARVES
BANDANAS
STATIONERY
WOOL BLANKETS
WOOL PILLOWS
WOOL TOTES AND POUCHES
WOOL SLIPPERS
FELT ACCESSORIES
BASKETS
GARDEN GOODS
CHOPPING BOARDS
CHEESE KNIVES
METAL HOUSEWARES
HARDWARE
FRAMES
SCISSORS
RATTAN BAGS

Special Thanks to: Toiles and Stripes for the generous use of their timeless and lovely apparel while shooting in Michigan. The Sleeping Bear Dunes National Park Empire, Michigan. David McCool at McCool Outdoors for the use of his incredible handcrafted wood long boat (and a few casting lesson on the fly) We would also like to thank our Michigan models who are now friends. Shot on location at the Kindred Cabin (Instagram: @Kindred_Cabin).

In St Louis: Our neighbors in Webster Groves, and to our team and models at Civil Alchemy as well as my children models: Tatum, Johnny, Anneli and Emmaline.

Photography and Art Direction: Ian VanDam, Lina Willey, and Kelley Barr.

CIVIL ALCHEMY, LLC
8154 BIG BEND BLVD. SAINT LOUIS, MO 63119
TEL: 314-801-7577



FOREVER USEFUL METAL BASKETS SET

Beautiful and useful, these heavy gauge iron wire metal baskets each have a handle making them ideal for indoor and outdoor carrying needs.

Forever Useful Metal Baskets - 140201: **\$110.00** per set

Large: \$48.00 each

Medium: \$37.00 each

Small: \$25.00 each



17.72" x 9.84" x 11.02"



14.17" x 7.87" x 9.06"



9.84" x 6.3" x 7.48"

IRON SNIPS

Cast iron snips. Great for trimming threads and snipping herbs.

[Household Scissor Large - 060507: 6.25" long, \\$18.00 each](#)

[Household Scissor Small - 060508: 4.25" long, \\$16.00 each](#)







Dryer Balls - 120601: **\$5.00** each
[Everyday Storage Baskets - 140202: \\$64.00 per set](#)
[Large](#): **\$38.00** each
[Small](#): **\$26.00** each

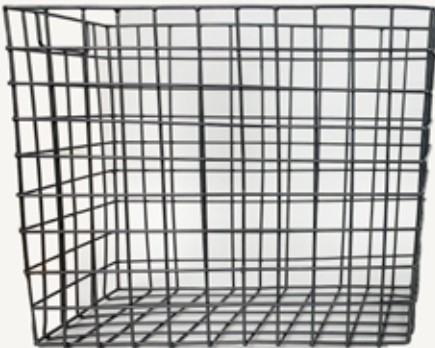


DRYER BALLS

Wool dryer balls make for an ecofriendly drying cycle by allowing more air to pass by the clothing as it bounces. They can also be scented with essential oils for even better smelling laundry. *For indoor use only.*

EVERYDAY STORAGE BASKET SET

Heavy gauge iron household storage baskets perfect for holding lots of different things like magazines, toys, dryer balls, you name it. *For indoor use only.*



14.17"x7.09"x11.42"



12.2" x 5.91" x 9.84"

IRON HOOKS AND BARS

Heavy gauge iron towel bars and hooks, forever in style and always useful. Hand crafted one by one.

[Accordion Wall Hooks](#): \$68.00 each

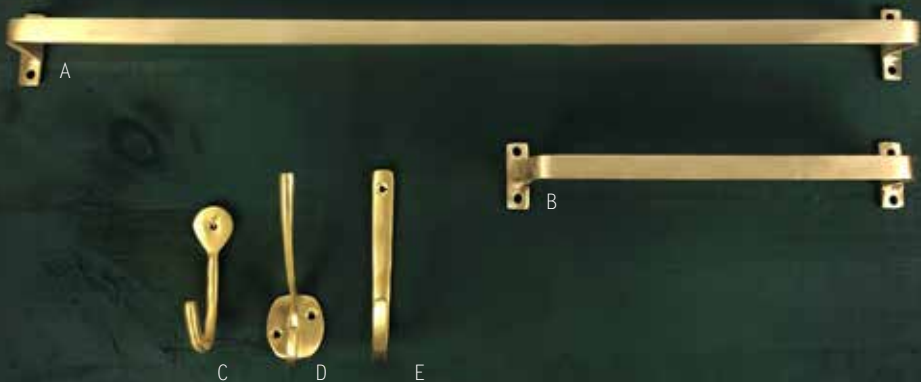
A hearty version of a classic design with 10 hooks.





-
- A. [Large Towel Bar](#) - 051203: 19" x 2" deep, \$32.00 each
 - B. [Small Towel Bar](#) - 051201: 8" x 2" deep, \$24.00 each
 - C. [Coat Hook](#) - 051102: 4.3" x 2.75" deep, \$9.00 each
 - D. [3" Wall Hook](#) - 051106: 3" x 2" deep, \$5.00 each
 - E. [4" Wall Hook](#) - 051104: 4" x 2" deep, \$6.00 each





SOLID BRASS HOOKS AND BARS

Solid cast brass and an uncoated matte finish. Untreated, expect a lovely patina to the finish over the years.

- A. [Large Towel Bar](#)- 051204: 19" x 2" deep, \$45.00 each
- B. [Small Towel Bar](#)- 051202: 8" x 2" deep, \$36.00 each
- C. [3" Wall Hook](#)- 051105: 3" x 2" deep, \$7.00 each
- D. [Coat Hook](#)- 051101: 4.3" x 2.75" deep, \$12.00 each
- E. [4" Wall Hook](#)- 051103: 4" x 2" deep, \$8.00 each



BRASS SHEARS

Cast brass handles and forged steel blades make for a great pair of shears. In three sizes, one should do the trick. Can be sharpened and tightened as the days turn into years of use.

- A. [Utility Shears](#)- 060506: 7.5" x 3.5", \$26.00 each
- B. [Barber-Style Shears](#) - 060504: 7" long, \$22.00 each
- C. [Useful Snips](#)- 060505: 5" long, \$16.00 each



A



B



C



BRASS EVERDAY STORAGE BASKETS

Multifunctional solid brass wire baskets designed with clean lines and durability. *For indoor use only.*

Large Basket / Small Basket- 140203: \$70.00 per set

Large: \$42.00 each

Small: \$28.00 each



14.17" x 7.09" x 11.42"



12.2" x 5.91" x 9.84"

SOLID BRASS CYLINDERS

Made in India, these solid brass cylinders have a rubber bottom to resist any wear and tear. Fill the vases with flowers, jewelry or any little treasures that deserve a stable home. Water-tight.



-
- A. [Cache with Lid in Gold](#)- 050805: 2.5" x 3.5" diam., **\$19.00** each
 - B. [Cylinder Small](#)- 050806: 3.5" x 2.75" diameter, **\$13.00** each
 - C. [Cylinder Tall](#)- 050803: 8.35" x 3.3" diameter, **\$24.00** each
 - D. [Cylinder Large](#)- 050801: 5.5" x 4.0" diameter, **\$24.00** each







STACKING TRAY SET

Endless uses for this collection of brass trays. Solid Brass serving pieces can last a lifetime. Untreated-expect a lovely patina over the years. Civil Alchemy's serveware collection is cast in India. Durable and functional.

[5.75" Diameter Plate / 5.1" Diameter Plate / 3.75" Diameter Plate-130304: 6" x 6" x 1" box, \\$44.00 per set](#)

SOLID BRASS CANDLE PLATE

Solid Brass candle plate hold a standard 7/8" taper. Untreated, expect a lovely patina over the years. Civil Alchemy's candle plate is form following function. Hand crafted.

[Brass Candle Plate](#) - 050901: 4.75" x4.75" , \$19.00 each,







SOLID BRASS SERVEWARE

Solid Brass serving pieces can last a lifetime. Untreated-expect a lovely patina over the years. Civil Alchemy's serve-ware collection is cast in India, and is durable and functional.

[Brass Serving Spoon](#)- 131302: 4.875" x 0.75", **\$12.00** each





BRASS CHEESE SET

Solid brass serving pieces can last a lifetime. Untreated-expect a lovely patina over the years. Civil Alchemy's serveware collection is cast in India, and is durable and functional. Great for gifts and special occasions.

[7" Parmesan Knife / 8.75" Cheese Knife / 6.87" Chisel Knife- 131502: 9.5" x 6.5" x 1" box. \\$44.00 per set](#)





PETITE SERVING SET

Solid Brass serving pieces can last a lifetime. Untreated-expect a lovely patina over the years. Comes in a gift box, Durable and functional.

5" Fork / 5.5" Knife- 131501: 6" x 3.5" x 1" box, **\$22.00** per set



PETITE SPOON

Solid Brass serving pieces can last a lifetime. Untreated-expect a lovely patina over the years. Durable and functional.

4.5" Spoon 131504: **\$8.00**



SERVING SET

Solid Brass serving pieces can last a lifetime. Untreated-expect a lovely patina over the years. Civil Alchemy's serveware collection is cast in India. Durable and functional.

Large Serving Spoon / Large Serving Fork- 131503: 9.75" x 3.75" x 1" each, **\$45.00** per set







MARBLE CUTTING BOARDS

Impermeable. This pure white and pale grey marble cutting board is as useful as it is beautiful. Complete with a twine strap for easy hanging storage.

[Large Cutting Board](#)- 130407: 14" x 0.5", \$24.00 each

[Small Cutting Board](#)- 130408: 12"x 0.5", \$18.00 each



MANGO WOOD CUTTING BOARDS

Grown in the heart of India, mango trees provide the world with the adorned fruit leaving its durable wood as a sustainable byproduct. This dense-grained wood creates strong cutting boards that resist the blade of a knife. Classic design.

[Wood Cutting Board Set of 5- 13040S1](#), \$115.00 for set, 1 minimum



[26"x12" Cutting Board:](#)
130401, \$58.00 each



[23"x10.5" Cutting Board:](#) 130402, \$46.00 each



[20"x9.25" Cutting Board:](#) 130403, \$36.00 each



[15"x7.5" Cutting Board:](#) 130405, \$24.00 each



[12"x6" Cutting Board:](#) 130406, \$16.00 each



LINEN TOWELS

We chose European linen for these hand and kitchen towels. Absorbant, quick drying, and anti- microbial. Colored with natural dyes, each towel is food-safe and unique in color. An added loop helps to hang the towels.

25" x 17.5", \$19.75 each



SHELL PINK- 130905



MAUVE- 130901



SLATE- 130902



NATURAL- 130904



SAGE- 130903





TIFFIN BOXES

Stainless steel tiffin boxes make the perfect sustainable food-safe containers for both eating on-the-go and at-home kitchen storage.

[Two-Tier Tiffin Box-051404](#): 5.7" x 5.5" diameter, \$24.00 each

[Three-Tier Tiffin Box-051403](#): 7.7" x 5.5" diameter, \$30.00 each.



SAFETY FIRST

Made of galvanized iron, the fill-it-yourself first aid box is durable and customizable for individualized safety needs. Pair with the solid brass safety and signal whistles for a good start in prepping. Whistle and other safety items not included.

A. [First Aid Box](#) - 051401: 10" x 7" x 5", \$38.00 each



A



B



C



B. [Safety Whistle](#) - 070301: 1.5" x 0.875", \$18.00 ea. min 4

C. [Signal Whistle](#) - 070302: 2.5" x 0.5", \$18.00 ea, min. 4





BANDANAS

100% Cotton. Hand block printed and super soft. Traditional bandana pattern design and fully reversible.

21" x 21", \$28.00 each



BLACK
020302



SMOKY BLUE
020306



CAMEL
020307



CREAM
020303



GREEN
020301



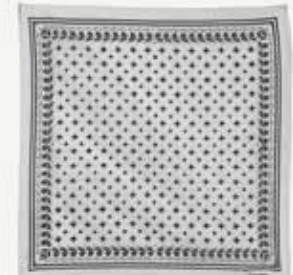
NAVY AND WHITE
020309



PALE PINK
020304



RED
020305



WHITE AND NAVY
020308

VIRGIN WOOL BLANKETS

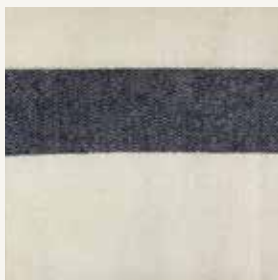
Made at a traditional mill in Northeastern Canada. 100% virgin wool, these blankets are soft, thick and lofty. Use as an oversized throw or a twin blanket.

52" x 76", \$168.00 each





BLACK WITH
TAUPE STRIPE - 050701



NATURAL WITH
NAVY STRIPE - 050702



NAVY WITH
NATURAL STRIPE - 050703



OLIVE WITH
NAVY STRIPE - 050704



TAUPE WITH
GREY STRIPE - 050705



RED WITH
NAVY STRIPE - 050706

BRASS USEFUL THINGS

Galvanized Iron & Solid Brass.



A



B



D



C

- A. [Brass Hook Keyring](#) - 060601: 3.15" x 0.75", \$11.00 each
- B. [Brass Clip](#) - 060301: 2.5" x 2", \$12.00 each
- C. [Brass Ruler](#) - 060401: 6" x 1", \$12.50 each
- D. [Brass Keyring with Release](#) - 060602: 2.75" x 1.25", \$8.00 each



This mid-sized storage box is a perfect place to keep your goods like maps, compasses, journals, keys, jewelry, and so on.

[Expedition Box](#) - 051402: 10" x 7" x 5", \$38.00 each

BRAIDED BUCKET-BAG

100% Cotton, versatile, and classic. With a round bottom, this sturdy tote can be used as a basket or bag. A great piece for decor, storage or a fashion accessory. Each tote is crafted by hand by artisans in India. Hand wash, line dry.





[Braided Bucket Bag Grey](#) - 140101: 16.5" at top x 8.5" at bottom x 11" tall, \$54.00 each

LEATHER HANDLED BRAIDED BASKET-BAG

A cotton blend basket with leather handles. Versatile and classic with a round bottom, this sturdy tote can be used as a basket or bag. A great piece for decor, storage or a fashion accessory. Each tote is crafted by hand by artisans in India. Hand wash, line dry.

[Braided Basket Tan and White with Leather Handle](#) - 140102: 16.5" at top x 9.5" at bottom x 13.5" tall, \$59.00 each







PLOWMAN HAT

Hand-crafted by milliners in the U.S.A. The plowman hat is made of woven straw and finished with a full grain leather hat band.

Brim 4" Crown 4", **\$128.00** each, sized S/M or L/XL,





OVAL BOTTOMED BAG

Buff colored. Full grain sturdy leather, this bag will stand on its own. Fully lined with one interior zip pocket. Made with solid brass hardware.

Oval Bottomed Bag - 040101: 15' x 11' x 3.5 ", \$180.00 each,







THE CLUTCH

Both a wallet and a clutch, This full grain leather piece has an inside brass zipper pocket with room for your passport, ID, credit cards and money.

040201: 8.75" x 4.75" x .5", **\$84.00** each,

THE WORK TOTE

For the win. Lined and sturdy with a sizable side pocket to hold all your work gear. Made with top grain leather and brass. Riveted thick handles with untreated leather that will patina nicely.

12' x 18' x 5" \$196.00 each,



TAN - 040108



BLACK - 040107







THE WOVEN LEATHER BAG

Casual and effortless, This bag is great for the beach, the woods and everyday activities. Made with top grain leather and hand woven. Brass rivets.

[The Woven Leather Bag](#) - 040106: 10.5' x 18' x 4 ", \$196.00 ea.

THE BAG TOTE

A very useful tote. Full grain leather, oversized and sturdy. This lined totebag has an interior zip pocket and a brass D ring.

18" x 14" x 5" , \$196.00



TAN - 040103



BLACK - 040102







THE ENVELOPE CLUTCH

Soft and supple yet thoroughly capable of serious protection, this bag is a tablet/computer/document cover as well as a personal clutch. Exterior pocket and brass closure.

040203: 9" x 12.5" , \$98.00

THE CROSS BODY BAG

Just the right size. Lined with a single interior pocket, a snap closure and an adjustable strap. Sturdy-made with top grain leather.

8.5"x 7"x 2", \$128.00



TAN - 040105



BLACK - 0400104





NESTING FELT BOWLS

Soft to the touch, these bowls have more uses than we can describe. Use at the bedside, in the kitchen or inside of a closet. Hand-felted by Artisans in Nepal with AZO-free swiss dye.

7" Diameter Bowl / 6" Diameter Bowl / 5" Diameter Bowl -
020520A: **\$38.00** per set



LEATHER HANDLE BASKET SET

An assortment of hand woven baskets with leather bound handles. Use as a purse, foraging - flower basket, or create your own uses.

[Leather Handle Seagrass Basket Set of 3](#) - 140307: \$180.00 per set

[Small](#) - \$55.00 each

[Medium](#) - \$65.00 each

[Large](#) - \$75.00 each









MARKET BASKET

This sturdy, tightly woven sea grass basket is useful and well built with an added brass ring for keys or other accessories.

Seagrass Market Basket - 140301: 16.5" x 6.5" x 12" tall, \$54.00 ea.

HOOP HANDLE BAG

This wooden handled hoop basket is functional and beautiful. Hand crafted, no two are exactly alike. Made of tightly braided seagrass.

Hoop Handle Seagrass Bag - 140306: 14"x3.5"x12" tall (top of handles), **\$68.00** each





RATTAN BAGS

Handcrafted in Bali using traditional techniques. Made with full grain leather, lined and complete with brass accoutrements.

- A. [Magre Bag](#) - 160101: 6' x7.5" x 4", **\$128.00** each
- B. [Maryjane Backpack](#) - 160106: 7.5" x 4", **\$128.00** each
- C. [Canteen Bag](#) - 160103: 7.5" x 3", **\$98.00** each
- D. [Lucia Bag](#) - 160104: 8' x5.5" x 2.75", **\$99.00** each
- F. [Signe Bag](#) - 160105: 4' x 8.5" x 4", **\$99.00** each

A



D



B



E



C



SIGNE BAG

Handcrafted in Bali using traditional techniques. Made with full grain leather, lined and complete with brass accoutrements. Adjustable strap.

[Signe Bag](#) - 160105: 4' x 8.5" x 4", \$99.00





CANTEEN BAG

Handcrafted in Bali using traditional techniques. Made with full grain leather, lined and complete with brass accoutrements, and fully adjustable.

[Canteen Bag](#) - 160103: 7.5" x 3", \$99.00

MAGRE BAG

Handcrafted in Bali using traditional techniques. Made with full grain leather, lined and complete with brass accoutrements, and fully adjustable.

[Magre Bag](#) - 160101: 6' x 7.5" x 4", \$128.00





LUCIA BAG

Handcrafted in Bali using traditional techniques. Made with full grain leather, lined and complete with brass accoutrements, and fully adjustable.

[Lucia Bag](#) - 160104: 8" x 5.5" x 2.75", \$99.00





MARYJANE BACK-PACK

Handcrafted in Bali using traditional techniques. Made with full grain leather, lined and complete with brass accoutrements. Adjustable straps.

1 [Maryjane](#) 60106: 7.5" x 4", \$89.00



FRESH RESIN JEWELRY

Emulating natural tortoise, this collection is an updated approach to a timeless classic. In four select colors.

LEMON MERINGUE



[CUFF-010802](#)



[RING-010702](#)



[BANGLES-010806](#)



[LARGE EARRINGS-010902](#)



[SMALL EARRINGS-010906](#)

MILK AND COFFEE



[CUFF-010803](#)



[RING-010703](#)



[BANGLES-010807](#)



[LARGE EARRINGS-010903](#)



[SMALL EARRINGS-010907](#)





TORTOISE



CUFF-010801



RING-010701



BANGLES-010805



LARGE EARRINGS-010901



SMALL EARRINGS-010905

AMBER



CUFF-010804



RING-010704



BANGLES-010808



LARGE EARRINGS-010904



SMALL EARRINGS-010908

Cuffs: \$20.00 each
Rings: \$24.00 each
Bangle Sets of Three: \$20.00 each
Large Earrings: \$22.00 each
Small Earrings: \$18.00 each



C



B



D



E



A



EXPLORER IN GOLD

Worldwide travels have inspired this collection of .925 sterling-silver and gold jewelry. Timeless and simple by design. Handmade in Rajasthan.

- A. [Malta Necklace Gold](#) - 010102: **\$98.00** each
- B. [Page Hoop Earrings Gold](#) - 010202: **\$68.00** each
- C. [Nefertiti Bracelet Labrdorite and Gold](#) - 010403: **\$44.00** each
- D. [Marie Ring](#) - 010310: **\$27.00** each
- E. [Daniela Earring in Brass and Gold](#) - 010237: **\$64.00** each

EXPLORER IN GOLD

Worldwide away travels have inspired this collection of .925 sterling and gold jewelry. Timeless and simple by design. Handmade in Rajasthan.

- F. [Sete Necklace Gold](#) - 010110: \$68.00 each
- G. [Athena Earrings Gold](#) - 010206: \$64.00 each
- H. [Apollonia Earrings Gold](#) - 010208: \$64.00 each
- I. [Trofuro Ring Gold](#) - 010302: \$72.00 each
- J. [Rope Band Gold](#) - 010304: \$34.00 each
- K. [Solid Brass Cuff](#) - 010402: \$32.00 each





K

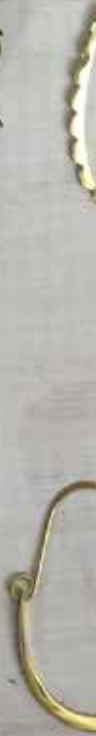
J

F

G

H

I



GOLD HOOPS

Made with .925 sterling silver and a 18kt gold finish these are exceptionally simple staples to any wardrobe. Thoughtfully designed to stand the test of changing fashions through time. Handmade in Rajasthan.

- A. [Francis Earrings Gold](#) - 010204: **\$64.00** each
- B. [Darla Hoop Earrings Gold](#) - 010225: **\$72.00** each
- C. [Orbit Earrings Gold](#) - 010227: **\$70.00** each
- D. [Coyoacan Earrings Gold](#) - 010229: **\$76.00** each
- E. [Teardrop Hoop Earrings Gold](#) - 010223: **\$64.00** each





MOONSTONE AND GOLD

Foundation of .925 silver and gold, embellished with iridescent moonstones. Handmade in Rajasthan.



- A. [Martha Ring Gold](#) - 010305: \$36.00 each
- B. [Menorca Necklace](#) - 010104: \$73.00 each
- C. [Mallorca](#) - 010105: \$46.00 each
- D. [Anneli Necklace](#) - 010108: \$58.00 each
- E. [Paulina Necklace Moonstone](#) - 010117: \$72.00 each
- F. [Josephine Necklace](#) - 010118: \$99.00 each
- G. [Jane Earrings](#) - 010222: \$54.00 each
- H. [Natalie Earrings](#) - 0102321: \$54.00 each
- I. [Paloma Earrings](#) - 010233: \$58.00 each
- J. [Emmaline Ring](#) - 010309: \$42.00 each
- K. [Ingrid Bracelet](#) - 010405: \$36.00 each

- A. [Malta Necklace Silver](#) - 010101: \$98.00 each
- B. [Sete Necklace Silver](#) - 010109: \$68.00 each
- C. [Mira Necklace Labradorite and Silver](#) - 010114: \$72.00 each
- D. [Page Hoop Earrings](#) - 010201: \$68.00 each
- E. [Athena Earrings Silver](#) - 010205: \$64.00 each
- F. [Apollonia Earrings Silver](#) - 010207: \$64.00 each
- G. [Sylvia Earrings](#) - 010211: \$80.00 each
- H. [Trofuro Ring Silver](#) - 010301: \$72.00 each
- I. [Rope Band Silver](#) - 010303: \$34.00 each
- J. [Martha Ring Silver](#) - 010305: \$36.00 each
- K. [Jacqueline Studs Silver](#) - 010235: \$36.00 each



EXPLORER IN SILVER

Worldwide travels have inspired this collection of .925 sterling jewelry. Timeless and simple by design. Handmade in Rajasthan.



SILVER HOOPS

Made with .925 sterling silver this collection adds exceptionally simple staples to any wardrobe. Thoughtfully designed to stand the test of changing fashions through time. Handmade in Rajasthan.

- A. [Francis Earrings Silver](#) - 010203: **\$64.00** each
- B. [Darla Hoop Earrings Silver](#) - 010224: **\$72.00** each
- C. [Orbit Earrings Silver](#) - 010226: **\$70.00** each
- D. [Coyoacan Earrings Silver](#) - 010228: **\$76.00** each



D



A



B



C





WOODLAND COLLECTION

Inspired by the world that lives and breathes beyond our doors and towns. Made with .925 silver with a gold finish.



- A. [Ibis Necklace](#) - 010107: \$44.00 each
- B. [Eleanor Pendant](#) - 010112: \$72.00 each
- C. [Eleanor Necklace](#) - 010119: \$114.00 each
- D. [Branch Necklace](#) - 010120: \$44.00 each
- E. [Eleanor Studs](#) - 010209: \$54.00 each
- F. [Ibis Earring](#) - 010212: \$64.00 each
- G. [Branch Dangle Earring](#) - 010215: \$44.00 each
- H. [Oak Leaf Earrings](#) - 010219: \$46.00 each
- I. [Ginko Leaf Earrings](#) - 010220: \$52.00 each
- J. [Twig Earrings](#) - 010221: \$46.00 each
- K. [Eleanor Ring](#) - 010311: \$54.00 each
- L. [Solid Brass Cuff](#) - 010402: \$32.00 each
- M. [Branch Bracelet](#) - 010406: \$44.00 each
- N. [Bekka Earring](#) - 010231: \$68.00 each
- O. [Waga Earrings](#) - 010230: \$66.00 each



A

B

C



D



E



F



G



K

LABRADORITE AND GOLD COLLECTION

Made with a foundation of .925 silver and a gold finish, this collection is embellished with grey-blue iridescent labradorite stones both elegant and natural.

- A. [Martha Ring Gold](#) - 010305: \$36.00 each
- B. [Theresa Ring](#) - 010312: \$52.00 each
- C. [Deco Ring](#) - 010307: \$36.00 each
- D. [Juliette Necklace](#) - 010103: \$98.00 each
- E. [Agwe Bracelet](#) - 010404: \$48.00 each
- F. [Mira Necklace Gold](#) - 010113: \$72.00 each
- G. [Camille Necklace](#) - 010111: \$72.00 each
- H. [Penelope Bracelet](#) - 010401: \$32.00 each
- I. [Jacqueline Studs Gold](#) - 010234: \$36.00 each
- J. [Deco Studs](#) - 010210: \$56.00 each
- K. [Fiona Necklace](#) - 010106: \$78.00 each





LABRADORITE AND CRYSTALS

Made with .925 silver and a gold finish, this collection is inset with labradorite, kyanite, and amazonite stones that are vibrant in color and earthy in design.



- A. [Madeira Earrings](#) - 010236: \$48.00 each
- B. [Paola Necklace](#) - 010115: \$99.00 each
- C. [Sofia Earrings](#) - 010213: \$76.00 each
- D. [Caspian Ring](#) - 010308: \$48.00 each
- E. [Seneca Drop Earrings](#) - 010218: \$56.00 each
- F. [Denali Earrings](#) - 010214: \$44.00 each
- G. [Paulina Necklace Labradorite](#) - 010116: \$72.00 each



SOLID BRASS AND GOLD HAIR PINS

Twist and tuck. Long or short. A classic hair pin is always useful.

Hair Pin Long - 010601: 4.75" x 1", \$18.00 each

Hair Pin Short - 010602: 3" x 0.75", \$14.00 each



HAIR PIN LONG
010601



HAIR PIN SHORT
010602





CABANA FRAMES

Handcrafted bone and resin frames with a simple Cabana stripe or chain pattern. Sit either vertically or horizontally and made in just the right sizes.

[A. Large Cabana Bone Frame-](#) 050216: 6" x 4", \$24.00 each

[B. Small Cabana Bone Frame-](#) 050215: 3" x 3", \$18.00 each

[C. Small Chain Bone Frame-](#) 050213: 3" x 3", \$28.00 each

[D. Large Chain Bone Frame-](#) 050214: 7" x 5", \$16.00 each

CHAIN FRAME





A

SLATE BONE FRAMES



B

An almost bark like appearance gives these frames a unique feel. Use both vertically and horizontally.

A. [Large Bone Slate Frame- 050210](#): 9" x 7", \$32.00 each

B. [Small Bone Slate Frame- 050209](#): 5" x 7", \$28.00 each

C. Color Block Bone Frames: 10" x 8", \$38.00 each

COLOR BLOCK BONE FRAMES



C

[BLACK AND WHITE- 050217](#)



[AMBER AND WHITE- 050218](#)





AMBER BONE FRAMES

Emulating old bamboo furniture, these frames have a classic almost vintage feel. Made of bone and stained the perfect amber color. Can be used vertically or horizontally.

- A. [Large Amber Bone Frame- 050208](#): 10" x 8", \$48.00 each
- B. [Medium Amber Bone Frame- 050207](#): 6" x 4", \$24.00 each
- C. [Small Amber Bone Frame- 050206](#): 3" x 3", \$16.00 each



A



B



C

HEMLOCK FRAMES



Handcrafted bone and resin frames with a Hemlock tip pattern. Set either vertically or horizontally.

- A. [Small Hemlock Frame- 050204](#): 7" x 5", \$36.00 each
 - B. [Large Hemlock Frame- 050205](#): 6" x 8", \$44.00 each
 - C. [Large Fluted Bone Frame- 050212](#): 5" x 7", \$24.00 each
 - D. [Small Fluted Bone Frame- 050212](#): 3" x 3", \$16.00 each
-



FLUTED FRAMES



Handcrafted creamy colored bone with a fluted border. Set either vertically or horizontally.





BONE BEADBOARD FRAMES

Handcrafted, almost iridescent bone frames with a board and batten inspired design. Set either vertically or horizontally.

- A. [Large Bone Beadboard Frame](#)- 050203: 8" x 10", **\$64.00** each
- B. [Medium Bone Beadboard Frame](#)- 050202: 6" x 8", **\$48.00** each
- C. [Small Bone Beadboard Frame](#)- 050201: 5" x 7", **\$36.00** each



A



B



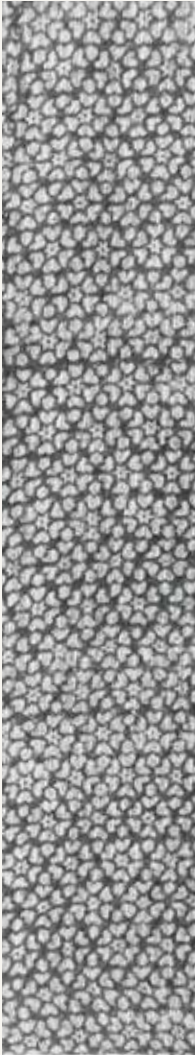
C

WOOL SCARVES

100% fine gauged wool. Generously oversized with eyelash fringe and incredibly lofty and soft. Each scarf is hand block printed, varying slightly from one to the next.

70" x 28", \$44.00 each

TESS SCARF
020104



ELSIE SCARF
020103



ADELAIDE SCARF
020102



MARION SCARF
020101







TAN - 040103

MYKONOS SCARF - 020105



ANATOLIA SCARF - 020106



GOA SCARF - 020107



COTTON BLOCK PRINTED SCARVES

100% Cotton with a petite eyelash fringe, these scarves are versatile and light. Each scarf is hand block printed, varying slightly from one to the next.

76" x 45", \$36.00 each

LINEN SCARVES

An essential in any wardrobe. In eight different colors, these scarves are made of 100% fine gauge loosely woven linen. Seasonless, timeless and generously oversized with an eyelash fringe.

80" x 30", \$58.00 each



[MOSS - 020108](#)



[NIGHTSHADE - 020109](#)



[SHELL - 020110](#)



[OCHRE - 020111](#)



[TOBACCO - 020112](#)



[WHITE - 020113](#)



[THISTLE - 020114](#)



[INDIGO - 020115](#)







CHARCOAL - 020203



WHEAT - 020204



DUSTY ROSE - 020205



CAMEL & NAVY - 020201



CHARCOAL & YELLOW 020202



WHEAT & RUST - 020206

CHUNKY KNIT SCARVES

100% Wool and hand knit in Nepal, these chunky scarves are toasty warm, a perfect length, and can be worn by any gender.

64" x 6", \$39.00 each

KNIT MITTENS

100% Wool and hand-knit in Nepal, these mittens make the cold bearable and stylish. Partially lined with fleece.

10" x 4.5" across hand, \$28.00 each



[CHARCOAL AND WHEAT - 020401](#)

YELLOW AND WHEAT - 020402



CAMEL AND NAVY - 020403





OLIVE WITH
NAVY STRIPE





FELTED PILLOW COVERS

100% wool, hand-felted with AZO-free swiss dye. Each pillow cover is a work of art reflective of the artisan who made them. These long lasting covers are very soft and complete with a brass zipper closure. Fits a 12"x18" pillow.

19" x 12.5" x 3", \$38.00 each



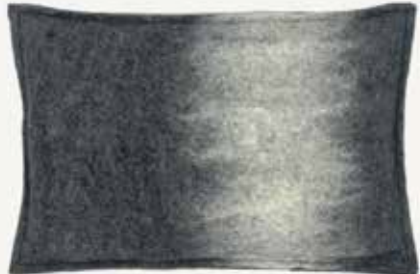
[BLUE AND WHITE - 050602](#)



[LIGHT GREY AND WHITE - 050601](#)



[RED AND WHITE - 050603](#)



[DARK GREY AND WHITE - 050604](#)

WOOL POUCHES

Hand-felted by artisans in Nepal and colored with AZO-free swiss dye. Complete with lining and a brass zipper. Water resistant, soft, and durable. Great for traveling. Naturally padded.

A. Wool Zipper Pouches - 9" x 1.5" x 7", \$25.00 each

B. Wool Coin/ID Pouches - 4" x 1" x 5", \$14.00 each



BLUE GREY- 020601



LIGHT GREY- 020602



TAUPE- 020603



YELLOW- 020604



LIGHT GREY- 020801



PINK- 020802



RED- 020803



YELLOW- 020804



DARK GREY- 020805



BLUE GREY- 020806



FELT HEART ORNAMENTS

Individually hand-felted artisional wool hearts. Keep a basket of these ready to share with loved ones.

3" x 3.35" with 3" Twine Tie, \$5.00 each



[PINK- 020514](#)



[LIGHT PINK- 020515](#)



[CHARCOAL- 020519](#)



[RED- 020517](#)



[CREAM- 020516](#)



[YELLOW- 020518](#)



FELT GARLAND

Individually hand-felted artisinal wool hearts. Year-round or seasonal decor.

Approx. 78" long with 18 felted balls, \$20.00 each

[CREAM- 15101](#)

[RED \(Not shown\)- 15102](#)

[GOLD- 15103](#)



LETTERPRESS CARDS

Letterpress cards printed and scored by hand just a few blocks from our shop. 80lb weight. Different designs for different occasions. Comes with a recycled French paper envelope and wrapped in a clear protective sleeve.

4" x 5.25", \$6.00 each



THANK YOU CARD- 061513



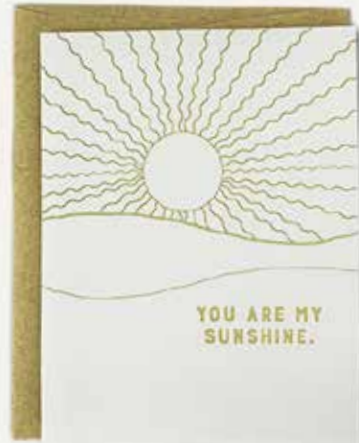
RAINY DAY CARD- 061509



YOU ROCK CARD- 061512



CONGRATULATIONS CARD- 061507



YOU ARE MY SUNSHINE CARD- 061511

THE MEDICAL HERB CARD COLLECTION

The medical herb card collection is printed and scored by hand just a few blocks from our shop. 100lb weight. Single-sided to write-your-own messages. Each comes with a recycled French paper envelope and wrapped in a clear protective sleeve.

3.25" x 5", \$6.00 each



LAVENDER- 061503



CALENDULA- 061501



YARROW- 061505



CHAMOMILE- 061502



ST. JOHNS WORT- 061504



[LOVE... CARD](#)- 061506



[LOVE LOVE LOVE CARD](#)- 061508



[VALENTINE CARD](#)- 061510

THE LOVE CARD COLLECTION

There is lots of love here. Each one of these cards is letterpress printed and scored by hand just a few blocks from our shop. 80 lb wt. Each comes with a recycled French paper envelope and wrapped in a clear protective sleeve.

3.25" x 5", \$3.00 each,