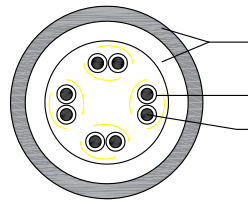
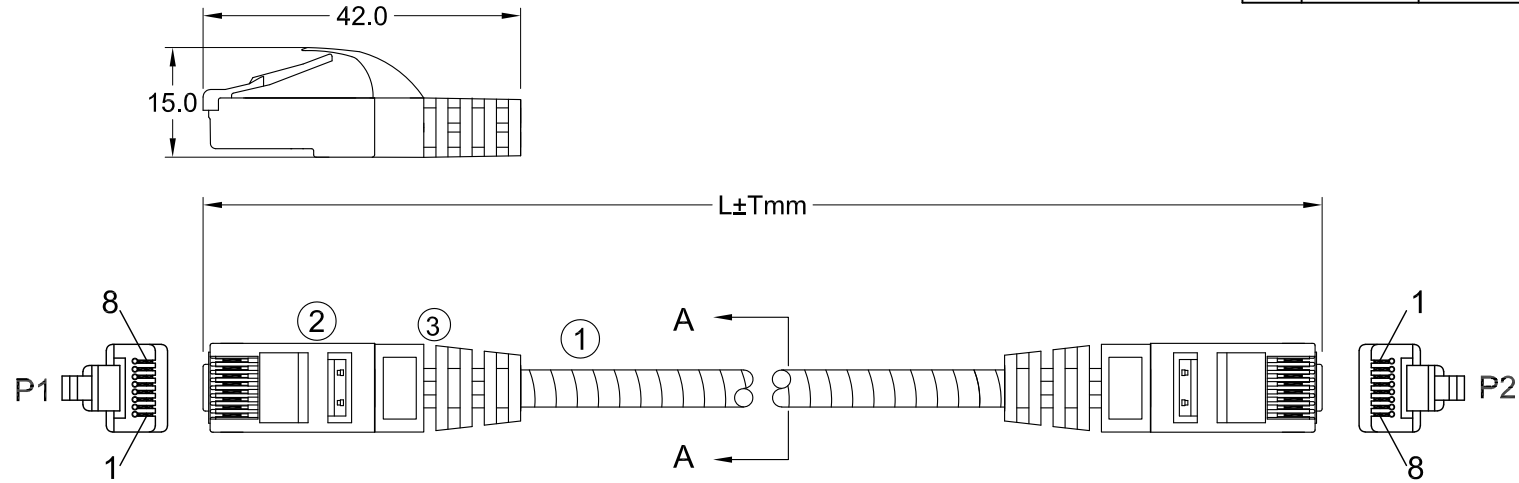


Rec.	Rec. Date	Modified By	Brief Description
02	2022.3.30	FW	Add label info



JACKET:SUS304+PVC Thickness:0.65±0.1mm  
 OD=4.9±0.2mm  
 INSULATION:HDPE Thickness: 0.12±0.05mm  
 OD=0.61±0.05mm  
 CONDUCTOR:[28AWG(7/0.12±0.008mmBC)]\*4P

SEC:A-A

orange 1	green 2
white/orange	white/orange
blue 3	brown 4
white/blue	white/brown

PINOUT		
P1	WIRE	P2
1	WHITE/ORANGE	1
2	ORANGE	2
3	WHITE/GREEN	3
6	GREEN	6
5	WHITE/BLUE	5
4	BLUE	4
7	WHITE/BROWN	7
8	BROWN	8

L(ft)	T(inch)	T(%)
3	±1.2	3.33%
5	±1.2	2%
7	±2	2.38%
10	±2	1.67%
25	±4	1.33%
50	±6	1%
65	±6	0.9%



③	RJ45 PLUG	8P8C 50U" GOLD PLATED TWO-PIECE PLUG.		
②	MOLDED	PVC MOLDED BOOT .		
①	CABLE	CAT.6A UTP PVC+SUS304 28AWG*4P BC		
NO.	PART NAME	SPECIFICATION DESCRIPTION	QTY	UNIT

DRAWN BY	DATE: 2022/03/30	DESCRIPTION:
CHECKED BY	SHEET 1 of 2	ITEM NO.
APPROVED BY	SCALE 1:1	REC. 00 UNIT: mm