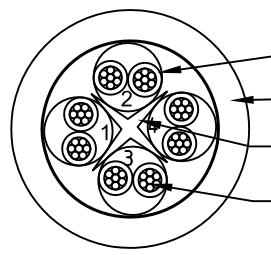
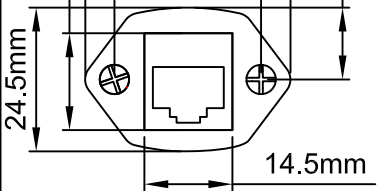
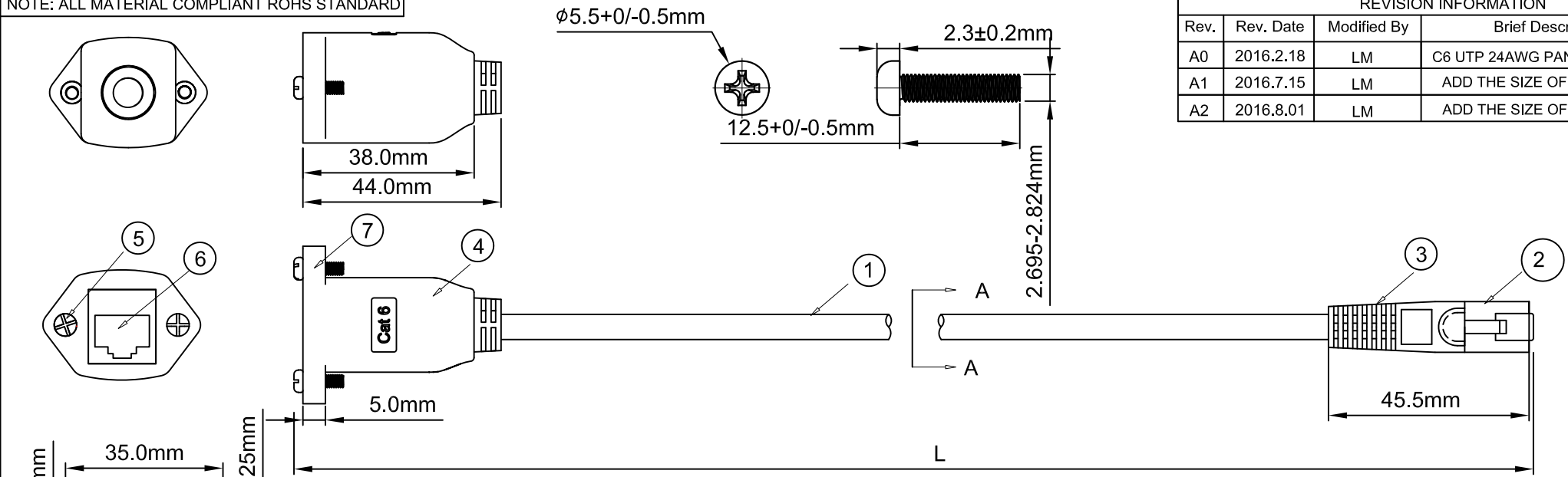


NOTE: ALL MATERIAL COMPLIANT ROHS STANDARD

| REVISION INFORMATION |           |             |                            |
|----------------------|-----------|-------------|----------------------------|
| Rev.                 | Rev. Date | Modified By | Brief Description          |
| A0                   | 2016.2.18 | LM          | C6 UTP 24AWG PANEL TO RJ45 |
| A1                   | 2016.7.15 | LM          | ADD THE SIZE OF SCREW      |
| A2                   | 2016.8.01 | LM          | ADD THE SIZE OF MOLD       |



INSULATION:HDPE  
 JACKET:PVC OD=6.0±0.5mm  
 FILLER:PE  
 CONDUCTOR:[24AWG(7/0.196±0.008mm) BC]X4P


| Length(FT) | Tolerance(mm) |
|------------|---------------|
| 1          | 25            |
| 2          | 50            |
| 3          | 50            |
| 4          | 50            |
| 6          | 100           |
| 10         | 100           |
| 15         | 150           |
| 25         | 150           |

SUGGESTION:  
 THE PLUG IS BEST TO BE MOLDED.

PACKING&NOTE:  
 1.WITH CLEAR POLIBAG INDIVIDUALLY  
 2.BY 10 FOR 1FT,2FT,3FT LENGTHS  
 3.ASSEMBLY PASSES CAT6 CHANNEL TEST.  
 USING FLUKE OR SIMILAR TEST EQUIPMENT

|              |             |
|--------------|-------------|
| orange 1     | green 2     |
| white/orange | white/green |
| blue 3       | brown 4     |
| white/blue   | white/brown |

| NO. | PART NAME | SPECIFICATION DESCRIPTION   | QTY | UNIT |
|-----|-----------|---|-----|------|
| ⑦   | NUT       | UNC #4-40 NUT,EMBEDDED,ELECTROPLATE   | 2   | PCS  |
| ⑥   | JACK      | C6 JACK,WHITE HOUSING   | 1   | PCS  |
| ⑤   | SCREW     | SCREW ,PAN-HEAD,UNC #4-40,5/16"(8mm) THREAD,0.3925"(12mm) LENGTH,ELECTROPLATE | 2   | PCS  |
| ④   | MOLD      | PLASTIC OVERMOLD WITH STRAIN RELIEF,BU608 (3015U) PVC,HARD:60-70P             | 1   | PCS  |
| ③   | MOLD      | PVC YUS-07 BU608 (3015U)  | 1   | PCS  |
| ②   | PLUG      | C6 RJ45 PLUG MALE TRANSPARENT   | 1   | PCS  |
| ①   | CABLE     | C6 UTP 24AWG CM,PRINTING COLOR WHITE,CABLE COLOR BU608 (3015U) PVC            | 1   | PCS  |



**EAGLE**  
ELECTRONICS  
EagleG.com - Quality You Can Trust...

|                    |                     |  |
|--------------------|---------------------|--|
| DRAWN BY LM        | DATE:<br>2016/08/01 | DESCRIPTION:<br>C6 UTP 24AWG PANEL TO RJ45 |
| CHECKED BY JZY     | SHEET 1 of 1        | ITEM NO. XXXXX                             |
| APPROVED BY LANDER | SCALE 1:1           | REV. 00 UNIT: mm                           |