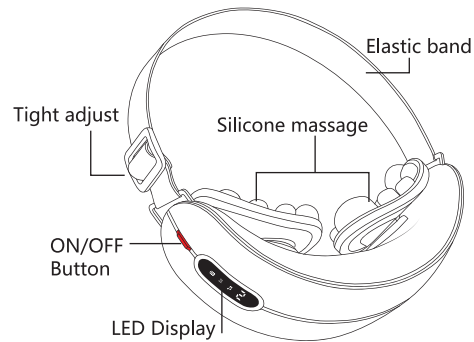


**AmaMedic**  
**AM-4602**  
**KNEADING EYE MASSAGER**



This user manual provides both operation information of this product and its detailed specifications.  
 Read this manual and understand it thoroughly before operation.

## Product manual



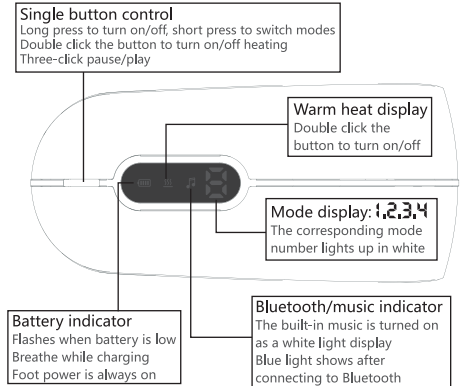
### Product Features

1. Four modes
2. Voice broadcast
3. Built-in music
4. Bluetooth connection
5. Warm compress
6. One-key function operation
7. Type-C charging interface
8. Battery capacity: 1200mAh
9. Rated power: 5W
10. Input current: DC5V == 1A

### Instructions for use

The Bluetooth is activated by default when the phone is turned on, and the phone can be directly connected. Before using it for the first time, please fully charge the product and charge it for about 2-3 hours.

## Instructions



Mode	Forward High	Forward low	Reverse high	Forward low	🎵	🔊	📶	Time (minutes)
Mode 1		✓			✓	✓	✓	10
Mode 2	✓				✓		✓	10
Mode 3			✓			✓	✓	10
Mode 4				✓			✓	10

**Note:** The built-in music will stop automatically when Bluetooth is connected in mode one and mode two.

## Safety Note

**Attention:** This device is designed for private use, not intended for medical or commercial purpose. Children should be supervised to ensure that they do not use this device as a toy.

1. Suggest to Adjust elastic suitable and Sit leaning against the sofa or chair when using. That will be more comfortable to use.
2. Suggest to use this device one or two times per day, Each time should be 10-20 minutes. And do not open your eyes when using this device.
3. Please using this device after charging.
4. Please cleaning surface of this device with wet towel or Cotton ball with 75% medical alcohol.
5. Do not put this device close fire, corrosive liquid and other adverse environments.

## If you

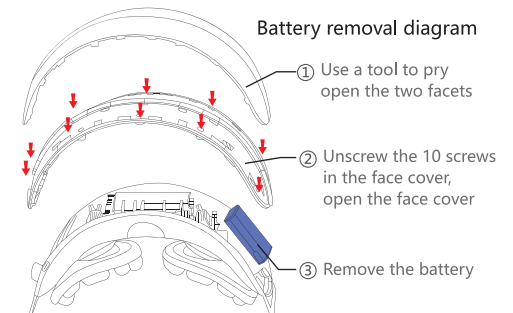
1. Are pregnant
2. Are shortsighted over than 800 degrees
3. Are seriously glaucoma, cataract
4. Are under 7 year-old
5. Are sequela of apoplexy
6. Are eye injury, in the period of rehabilitation of finished surgery (double eyelid)
7. Were Glaucoma, cataract, retinal detachment and other serious ocular region surgery
8. Are suffering from serious eye inflammation

We advise you to consult with your doctor before using this device.

## Battery

### Battery reminder:

1. Under working status: when the battery is low (voice prompt: low battery, please charge in time), every 1 minute (voice prompt: low battery, please charge in time).
2. In working state: when the battery is low (voice prompt: low battery, thank you for using, goodbye), and automatically shut down. In the shutdown state: When the battery is low, the power light flashes 3 times quickly and the device cannot be turned on.
3. When the battery is low, the battery light flashes 3 times quickly.



•The main unit (including lithium battery) and accessories of this product have reached the end of their service life. Please do not discard them randomly, otherwise electronic waste will be generated and the environment will be polluted. Before discarding the product, the battery must be removed from the product; when removing the battery, the product must be disconnected Power; the battery should be disposed of safely when removed.