

# Otamic

## Instruction Manual

Model No.: Otamic-2X

---



Before operating this unit, please read these instructions completely.

# Contents

---

## Before Use

---

- Safety Precautions ..... 1-3
  - FCC Radiation Exposure Statement ..... 3
- Chair Components ..... 4-6
  - Bluetooth Speaker ..... 4
- Setting up the massage chair ..... 7
- Preparation before Use ..... 8-10

## How to Use

---

- Operation Instruction ..... 11-12
- After massage..... 13

## Q&A / Important

---

- Cleaning and maintenance ..... 14
- Troubleshooting ..... 15-17
- Grounding Instructions..... 18
- Specifications..... 19

Thank you for purchasing this Massage Chair.  
Before using your massage chair, please read the contents of this instruction manual and refer to it when needed.

# Safety Precautions

When using the massage chair, basic precautions should always be followed to reduce the risk of electric shock, burns, fire or injury to persons. Please read the following precautions before using the massage chair.

- Make sure the power plug is securely inserted into a proper electrical outlet to reduce the risk of short-circuit and fire.
- It is highly recommended that a surge protector is used to prevent from damage.
- DO NOT use the massage chair in areas where the humidity is high such as a sauna steam room, Pools, bathrooms, AC or heating vents, etc.
- DO NOT use the massage chair outdoors and avoid areas with direct sunlight.
- If the chair is not being used, turn the power switch to the OFF position and unplug the massage chair from the electrical outlet to prevent any damages to the chair when there are power outages/surges that may cause serious damage.
- Never plug/unplug the power cord plug socket with wet hands.
- Close and continuous supervision is necessary when the massage chair is used by, on or near children or disabled persons.
- No more than one person should use the massage chair at the same time.
- The massage chair is intended for use as described in the Instruction Manual. Do not use any attachments other than those recommended by the manufacturer.
- DO NOT attempt to stand or sit on the backrest, armrest or footrest in order to prevent accident, injury or damage to the chair.
- Avoid falling asleep while using the massage chair.
- Always keep the massage chair clean, and never insert any objects into or around the gaps of the massage chair.
- DO NOT move the massage chair by pulling on the power supply cord.
- Make sure there are no children, pets or other obstacles behind or underneath the massage chair.
- If you find any rips or tears in the fabric of the massage chair contact the service department and stop using the chair immediately.
- This massage chair is designed for household use and should not be used in non-residential settings.

- Please consult your doctor if you are in doubt as to whether or not you should use this massage chair.
- Please consult a doctor before using the massage chair if you are pregnant, undergoing any medical treatment, using a medical electronic device such as a pacemaker, or are experiencing any of the following: Malignant tumor, heart disease, back pain, abnormal or curved back bone, osteoporosis or acute illness.
- If you experience pain while using the massage chair, stop using the chair immediately and consult your doctor.
- Never use a massage function on swollen or inflamed parts of the body.
- DO NOT use the massage chair for more than 30 minutes at a time.
- DO NOT use the massage chair where aerosol(spray) products are being used or where oxygen is being administered.
- This massage chair is a non-professional product designed to provide a comfortable massage and should not be substituted for appropriate medical treatment.
- Never operate the appliance with the air hoses that inflate while they are blocked. Keep the air openings free of lint, hair, and any other obstructions.
- Check the skin in contact with the heated area of the appliance frequently to reduce the risk of injury. If the heating pad malfunctions and extreme heat is produced it may cause serious burns.
- Burns may result from improper use. If this is the case immediately shut off the chair and unplug from the outlet.
- Remove all sharp objects from the body and pockets such as keys and Pens.
- Keep children away from extended foot support (or other similar parts.)
- DO NOT WET-DO NOT USE PINS.
- NEVER REMOVE COVER.

 **Caution**

The user's weight is usually limited to 220 lbs.

For a user heavier than 220lbs, the product may have bigger noise and its fabric housing may be worn quicker.



# FCC Radiation Exposure Statement

## FCC Radiation Exposure Statement:

This equipment complies with FCC radiation exposure requirement.  
The device can be used in portable exposure condition without RF striction.

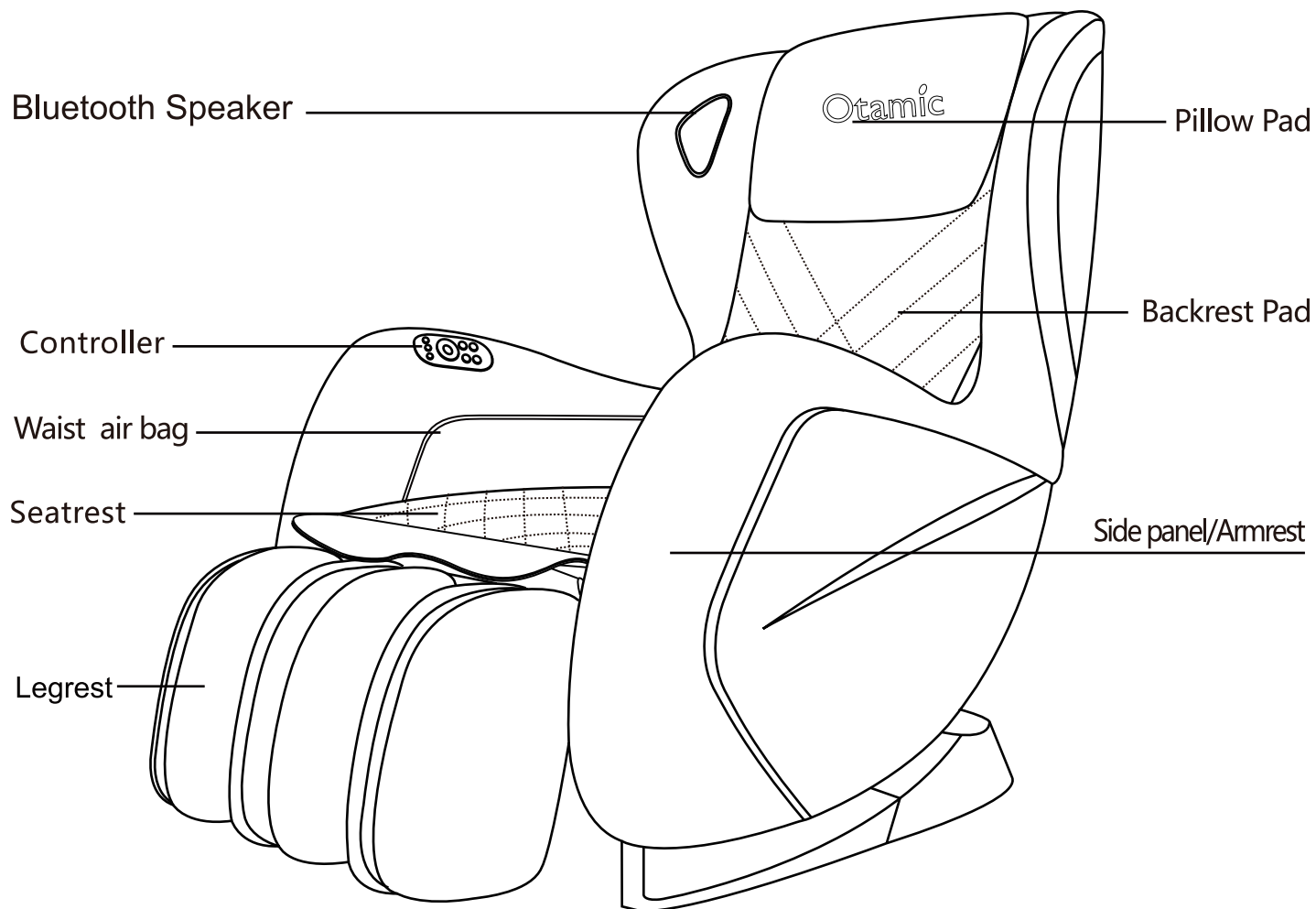
### FCC STATEMENT

1. This device complies with Part 15 of the FCC Rules. Operation is subject to the following two conditions:
  - (1) This device may not cause harmful interference, and
  - (2) This device must accept any interference received, including interference that may cause undesired operation.
2. Changes or modifications not expressly approved by the party responsible for compliance could void the user's authority to operate the equipment.

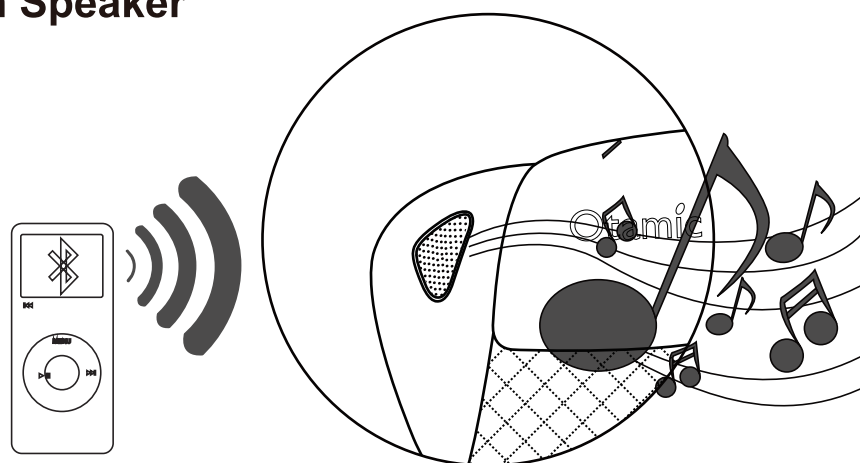
This equipment has been tested and found to comply with the limits for a Class B digital device, pursuant to part 15 of the FCC Rules. These limits are designed to provide reasonable protection against harmful interference in a residential installation. This equipment generates, uses and can radiate radio frequency energy and, if not installed and used in accordance with the instructions, may cause harmful interference to radio communications. However, there is no guarantee that interference will not occur in a particular installation. If this equipment does cause harmful interference to radio or television reception, which can be determined by turning the equipment off and on, the user is encouraged to try to correct the interference by one or more of the following measures:

- Reorient or relocate the receiving antenna.
- Increase the separation between the equipment and receiver.
- Connect the equipment into an outlet on a circuit different from that to which the receiver is connected.

# Chair Components



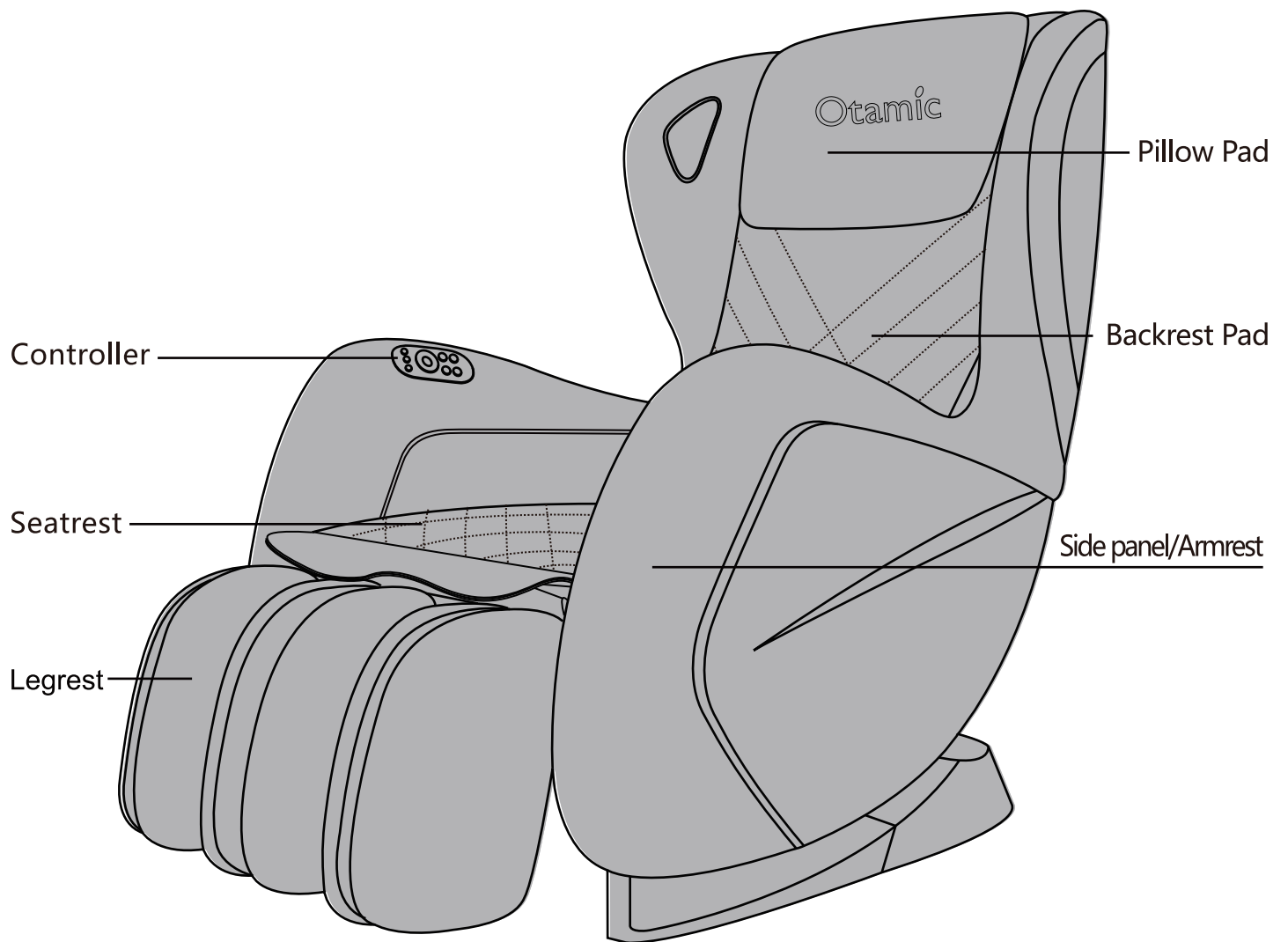
## Bluetooth Speaker



### NOTE:

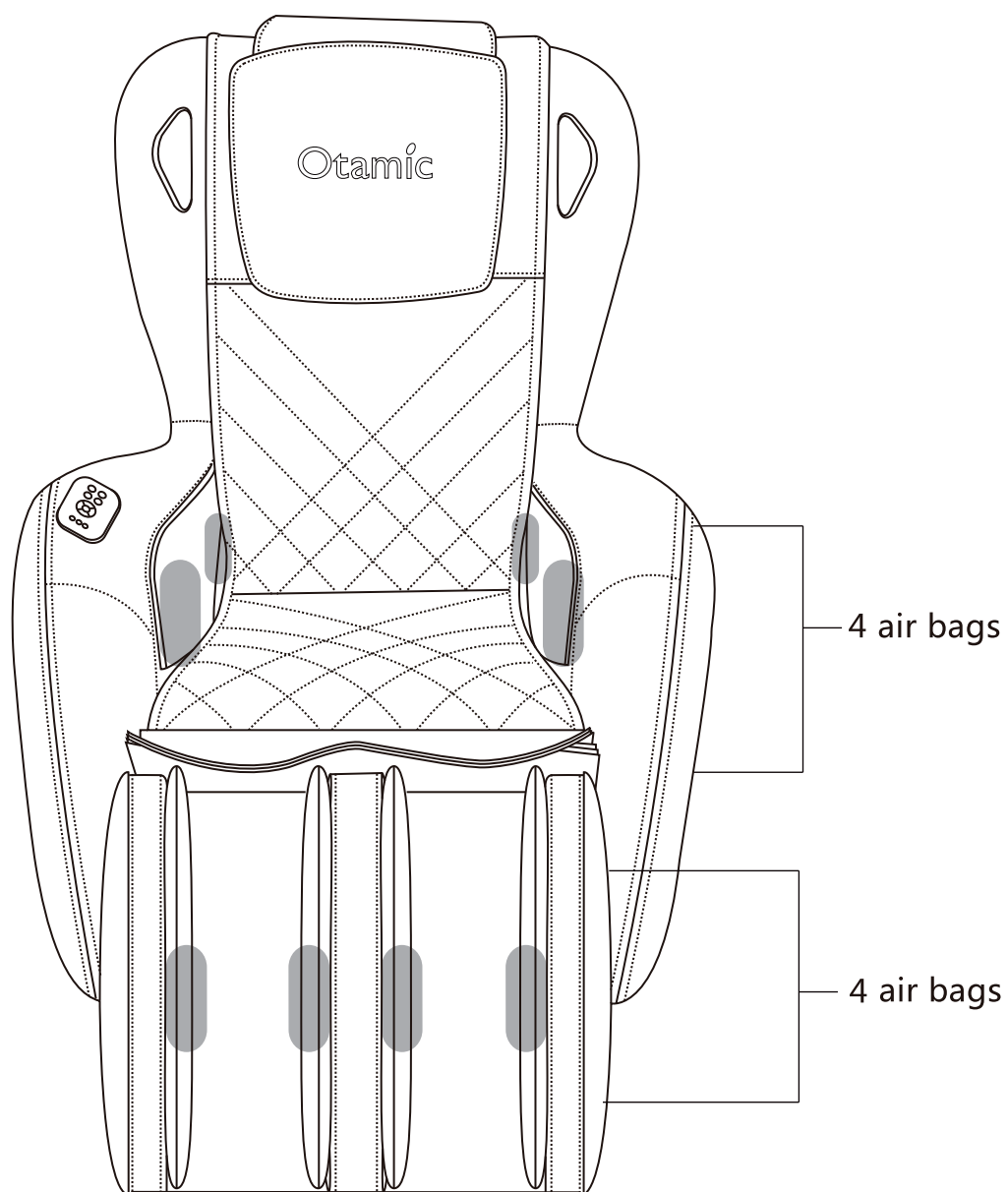
The bluetooth speaker can only connect with one bluetooth device at a time. Please turn off your bluetooth device after using so that other users can enjoy it as well. The bluetooth name label is on the right side of power switch on the electric control box.

# Product Parts



# Product Parts

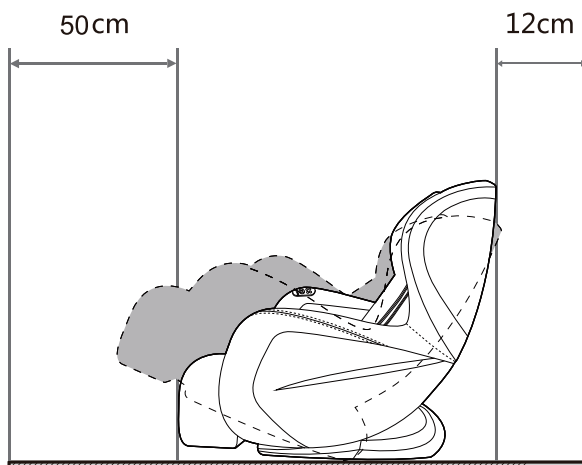
## Air Bags Massage Position



# Setup of the massage lounger

## 1 Before use (installation position)

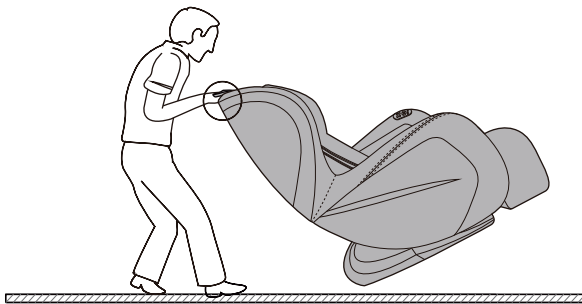
- Make sure there is enough space for the tilting of the product.



- Do not expose the product to direct sunlight or a high-temperature place (e.g., in front of heating equipment); otherwise its synthetic leather may fade or harden.
- Place a mat below the product to avoid floor damage. The mat should cover the product's area in contact with the floor and the footrest's area in contact with the floor (minimum dimensions: 150X80cm). See the figure.
- Install the product close to a power socket.

## 2 Chair Moving Instruction

Recline the chair to easily move the chair around the house.



- The product is heavy and be careful when moving.

Product weight	Approx. 115.5 lbs
----------------	-------------------

Put the product on the floor.

- ※**Caution**
- Before moving the chair, please put the footrest back into the original position. Otherwise, injuries might occur in the process of moving.
  - Avoid moving the massage chair when there is someone seated on it.
  - Placing a mat underneath the massage chair is advisable, as the moving process might leave scratches on the floor surface.

- Put down the product slowly and carefully to avoid foot injury.
- Do not release the footrest until the product is placed horizontally. Otherwise the footrest will rebound to its original position.
- It is suggested to pave an article such as a mat on the floor to keep it from damage.

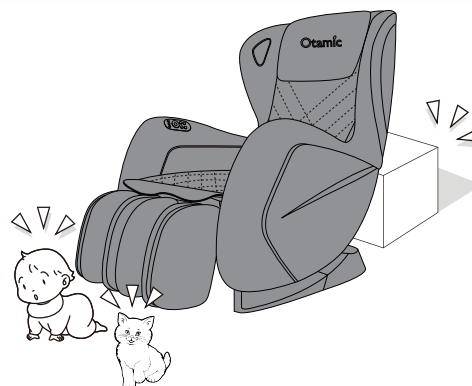
### ⚠ Caution

- |  |  |
|--|--|
| <ul style="list-style-type: none"> <li>● Do not drag or pull the product after it is installed.</li> <li>● When handling the product, do not hold its frame. Otherwise product faults or personal injuries may happen.</li> <li>● Do not move the product by pulleys directly on a floor. Otherwise marks may be left on the floor.</li> </ul> | <ul style="list-style-type: none"> <li>● Do not move the product while there is a person on it. Otherwise, accidents or injuries may happen due to falling down.</li> <li>● Do not hold the foot massage section when moving the product. Otherwise injuries may happen due to sliding.</li> </ul> |
|--|--|

# Before use

## 1 Check the space around the product.

Make sure there is no person, pet or other object close to the product.



## 2 Roll up the back cushion and fix it by the zipper.

Roll up the back cushion and fix it on the main body by the zipper.

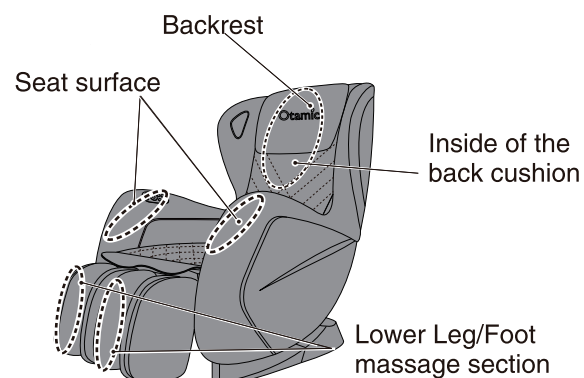


## 3 Make sure there is no foreign matter in the seams of the product.

When checking the Lower Leg/Foot massage section, press the footrest forward by your hands and make sure there is no foreign matter in the seam.

### Caution

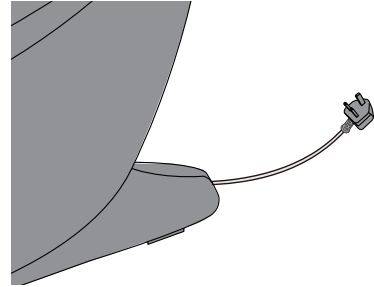
- Do not put hands, fingers, feet or head into the seam(s) between the footrest and the seat surface or the armrests.
- Before sitting on the product, make sure there is no foreign matter between any two parts of it.
- Do not put pets on the product (such as its back cover, backrest).



## 4 Inspect the power line and power plug

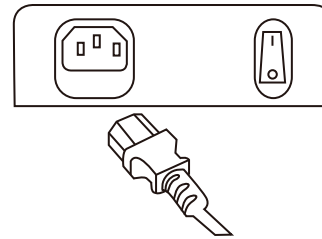
### Warning

- **Remove such dirt as dust on the power plug at regular intervals.**  
Otherwise fires caused by poor insulation due to factors such as moisture may happen. (Wipe the power plug with dry cloth.)
- **Do not damage the power line or the power plug. Do not damage, machine, forcibly bend, twist or lengthen the power line or the power plug, or place the power line or the power plug close to a heater, or tie or bind any heavy objects on the power line or the power plug.**  
A damaged power line or power plug may result in electric shocks, short circuits, or fires.  
Please consult the shop you bought the product or an authorized service center about maintenance method of the power line or the power plug.



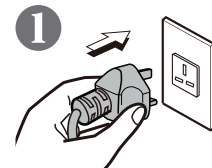
Do not be entangled by the power line.

**Push the interface into the power input jack till the end.**



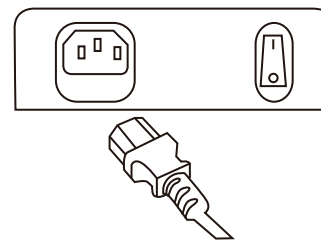
## 5 Power on the product

- 1 **Insert the power plug into the power socket.**
- 2 **Pull the power switch to the “I” position.**



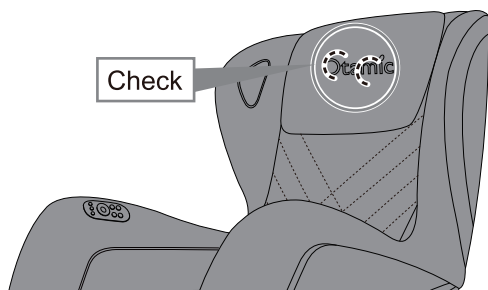
### Warning

- **Insert the power plug into the power socket till the end.**  
Otherwise electric shocks or fires because of overheat may happen.
- **Abide by the regulations on use of the socket and the wiring devices strictly.**
- **Use a 120 V, 60Hz power supply.**  
(Do not use the product in a foreign country or connect it with a transformer without permission.)  
Otherwise electric shocks, product faults or fires because of overeat may happen.
- **Do not insert or pull out the power plug with wet hands.**  
Otherwise an electric shock may happen.



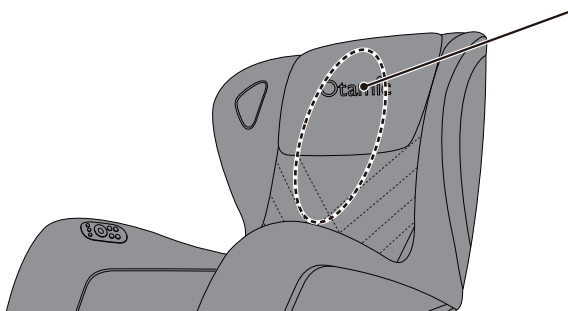
## Before use (Continued)

### 6 Make sure the massage wheels are retracted



**If they are not,**  
press ON return them to the  
retracting position.

### 7 Make sure the fabric is not damaged nor cracked



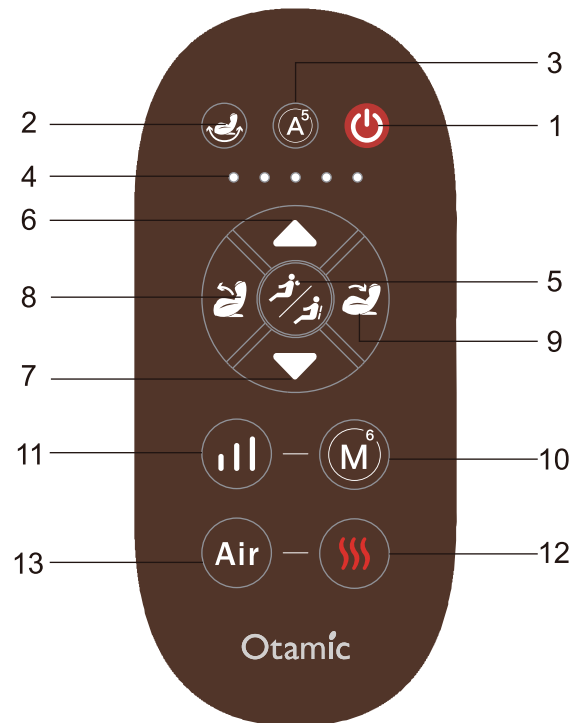
Inspected area:  
The fabric of traveling sections of the massage  
wheels on the backrest

#### **Warning**

- **Before use, check whether fabrics of the area pointed out in the figure are damaged. (Even if the fabric is slightly damaged, stop the product immediately, pull out the power plug and send the product to repair.)**  
If the product is used when there is fabric damage, you may get injured or get an electric shock.



# Operation Instruction



Connect to the power supply, and turn the switch to "I" position, and the chair is now in idle mode. During its idle mode, there are only 3 functions: ON/OFF, Incline, Recline that can be operated.

## 1. ON/OFF

The Start/Stop Control Button

During its idle mode, Press any massage function button to begin the chair's massage functions. This will also start the timer. Press this button again to stop all massage functions, and the massage rollers will return to their position.

## 2. Zero-G & Swing

Press once to activate the Zero-G function. Press again to stop the function. Press the button for 2 seconds to activate swing function. Press the button for 2 seconds again, stop the function.

## 3. Auto Program

Press this button to activate 5 Auto Program function. Every time this button is pressed, the time will change in the sequence of Deep Tissue Massage >Text-Neck >OfficePRO>Shape N Tone >Sweet Dream in cycle. If any auto program is activated, chair will automatically performing a shoulder height scan. And the theme will go to shoulder adjustment automatically, user can manually adjust the shoulder height position to the desire comfortable position before auto program start.

## 5. Partial /Spot

The spot or partial back massage This button allows the user to select spot massage for any part on the back. Press this button once to activate spot massage at the required location. Press this again to switch to partial function. The partial back massage While running spot massage, when this button is pressed again, then massage will change from spot to partial. The massage will take the spot position as the centre to perform partial massage at a distance of approximate 8cm. Press again to stop the function.

## 7. Upward/Downward

When the manual or automatic shoulder scanning can't meet individual requirements, you manual fine tune the shoulder height location by pressing up/down button within sound 10 seconds. Once appropriate location found release the key, the final position will be lock.

**Note: In the spot or partial massage, you can also use these two buttons to adjust the massage position.**

## 8. Backrest Incline /Recline

Angle Adjustment Control Button for massage chair

These two control buttons can adjust the Backrest Incline/Recline angle respectively. Press and hold the Incline/Recline control button to adjust the backrest and footrest to a desired comfortable position, then loosen the button stop it.

## 10. Manual

Kneading, Tapping, Swedish, Shiatsu, Clapping & Kneading, Rolling

Press this button to activate the rhythmic kneading manual massage function for a full back massage at medium strength. Every time this button is pressed, the manual massage function will change in the sequence of Kneading>Tapping>Swedish> Shiatsu>Clapping&Kneading>Rolling>Stop.

## 11. Strength/Width

The Strength/Width Adjustment Button --3 levels

After activating the Kneading/Clapping/Tapping/Shiatsu/Rolling function, every time the button is pressed, the massage strength intensity can be adjusted to "Lv1>Lv2>Lv3" in one cycle.

\* In Manual massage mode, press this button for 2 seconds every time, the massage width will change in the sequence of Width>Middle>Narrow.

## 12. Lumbar Heating

Press this button once to start lumbar heating function, press again to stop heating function. The indicator will remain flashing when heating function is working.

## 13. Air Bag

Air Bag Massage--2 Models

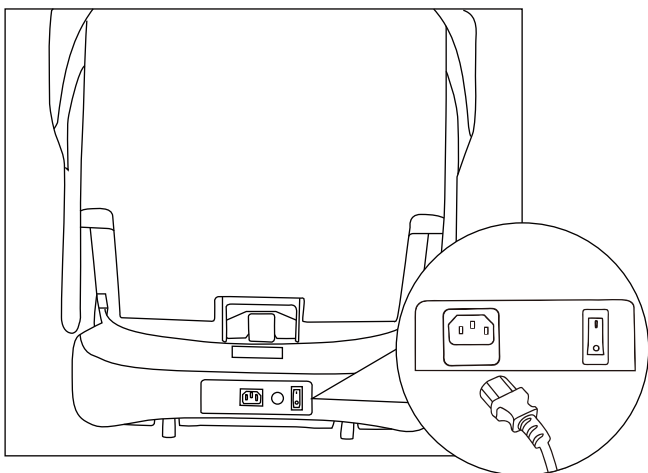
Every time this button is pressed, the air bag massage function will change in the sequence of Air Bag 1> Air Bag 2>Stop.

\*Air Bag 1: Mainly massage on breech and footrest.

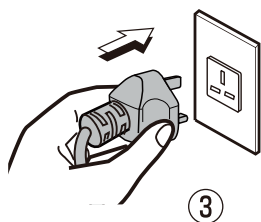
Air Bag 2: Mainly massage on footrest.

## After massage

### Power off the product.



- ① Turn off the power switch.
- ② Pull out the power plug.



### Timer function

#### Massage will end automatically when time is up.

- The Lower Leg/Foot massage section will remain at the final position.
- The massage wheels will move to the retracting positions.
- The backrest will not raise automatically. If controller was shut off, press ON/OFF button, the backrest and footrest will back to origin.

### Warning

- After use each time, pull the power switch to the O position and pull out the power plug; otherwise accidents and injuries by playing with them by children may happen.

# Cleaning and maintenance

## Cleaning of the synthetic leather

**Wipe the synthetic leather with a soft dry cloth.**

- **Do not clean the product with chemicals such as thinners, gasoline and alcohol.**
- **When using a leather maintenance product (cleaning cloth) sold on the market, follow its directions for use.**
- **If the synthetic leather is very dirty, wipe it with the method below.**
  - ① Put a piece of soft cloth into water or 3% to 5% neutral detergent contained hot water and wring it out.
  - ② Wipe surface of the synthetic leather with the soft cloth.
  - ③ Wipe the detergent with a piece of cloth once soaked in clean water and wrung out.
  - ④ Wipe with a piece of wrung soft cloth.
  - ⑤ Have the synthetic leather take natural air drying.
- **If it is difficult to remove the stains on the synthetic leather, soak a piece of melamine foam bought from the market into a neutral detergent and use it wipe the product.**
- **Do not dry the surface by a hair drier.**
- **Surface of the synthetic leather may be dyed by fabric colors; therefore, be careful when wiping the product with denim or colored cloth.**
- **Keep these positions from long-time contact with plastics to avoid fading.**
- **Synthetic leather may discolor, so the position in contact with the hair dye used should be covered by a towel.**



## Cleaning of the plastic parts

**1 Put a piece of soft cloth into water or neutral detergent contained hot water, wring it out and wipe the plastic parts.**

- **Do not clean the product with chemicals such as thinners, gasoline and alcohol.**

**2 Wipe with a piece of cloth once soaked in clean water and wring out.**

- **Wring the cloth out before using it to wipe the remote controller.**

**3 Have the plastic parts take natural air drying.**



# Troubleshooting

**After a fault happens, inspect and try the corresponding method below.**

If the fault still exists after that, contact the shop from which you bought the product.

Fault	Cause and elimination method
<p><b>The massage wheels stop during use</b> (The product beeps and all icons and buttons on the remote controller flicker and then go out.)</p>	<p><b><u>For safety, the massage wheels will possibly stop upon a too large external force during use.</u></b> If all marks and buttons on the remote controller begin to flicker, it suggests an extreme abnormality. In this case, turn off the power switch and turn it on about 10 seconds later. If the massage wheels stop again, adjust your sitting posture and do not lean on the backrest completely. (Users, particularly those heavier than 100 kilograms, should follow relevant precautions.)</p>
<p><b>The product cannot tilt, or the footrest cannot be raised or lowered</b> (The product beeps, the running light on the remote controller goes out and the product stops)</p>	<p><b><u>For safety, the product will stop upon an obstruction or a too large force.</u></b> If all contents and buttons are flickering and the backrest or the footrest has stopped, turn off the power supply and turn it on about 10 seconds later and then operate the product.</p>
<p><b>The massage wheels cannot reach the shoulders or the neck</b></p>	<p>If the head is not in contact with the headrest, or the back is not in contact with the backrest, the shoulder position in body type detection will possibly be lower than the actual position. Sit in the deepest position of the product, lean your head on the headrest and operate from the beginning again.</p>
<p><b>The left and right massage wheels have different heights (intensities)</b></p>	<p>It is not a fault but a normal phenomenon because the product is provided with a massage core allowing alternate beats of the massage wheels.</p>
<p><b>The product cannot run at all.</b> ● Upper body (the neck to the waist) massage ● Lower leg/foot massage</p>	<ul style="list-style-type: none"> <li>● The power line is disconnected.</li> <li>● The power switch is not turned on.</li> <li>● No program is selected after ON button on the remote controller is pressed.</li> </ul>
<p><b>The product is damaged.</b></p>	<p>To avoid accidents, contact an authorized service center.</p>
<p><b>The power line or the power plug has abnormal heating.</b></p>	

If above solution are not applicable ,kindly contact OGAWA service Center.

## Troubleshooting (Continued)

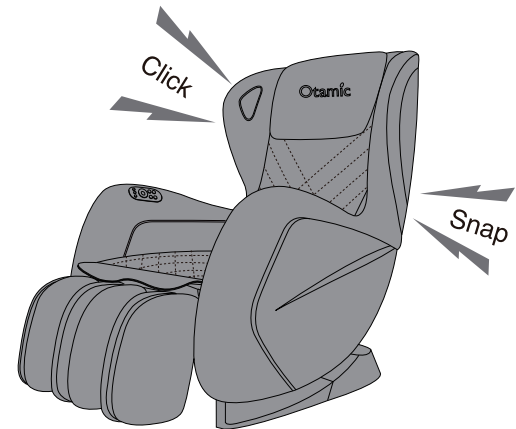
### The sounds and feelings you care about in use of the product

**You will hear or have the following sounds or feelings when using the product. It is not abnormal phenomena but results of the product structure.**

- Sound when the stretching massages are retracted
- Sound and feeling when the massage wheels rub patterns on the fabric
- Sound of movements such as kneading and beat
- Friction sound of the running massage wheels
- Sound of up-down movement
- Sound of the conveyor belt
- Motor sound
- Sound of the squeezing massage wheels when they begin to stretch
- Sound when a person is sitting on the seat
- Friction sound between the armrests and the back cushion when the backrest is tilting
- Friction sound between the massage wheels and the fabric
- Sound of the inflator pump during Air Bag massage
- Sound of air exhaust during Air Bag massage
- Running sound of the solenoid valve at bottom of the product during Air Bag massage.
- Swing of the footrest
- Sound when the shoulders are stretched or moved
- Running sound of the air bags
- Sliding sound of the foot massage section
- Friction sound between the back cushion and the back cover leather when the backrest is tilting

**If the sound is loud, it is also possible that the product has failed.**

- In this case, have the product inspected and repaired by an authorized service center.



### **Warning**

- **Do not refit, disassemble or repair the product without permission.** Otherwise fires, abnormal movements or personal injuries may happen.

### **Warning**

- **In the case of any abnormality or fault, stop the product immediately and pull out the power plug to avoid fuming, fires and electric shocks.**
  - < Abnormality and fault examples >
  - The product fails to work after the power switch is turned to the ON position;
  - After the power line is moved, the product is discontinuously powered on;
  - In use, the product gives off a burning smell or an abnormal sound;
  - The product is deformed or abnormally heating
    - In any of these abnormalities and faults, have the product inspected and repaired by an authorized service center immediately.

## Questions and answers (Q&A)

**Q** Can persons paying frequent visits to hospitals because of diseases use the product?

**A** **These persons should consult physicians before using the product.**  
Massage is the so-called "touch-pressure stimulation": Muscles are compressed to relieve their tension and promote hemokinesis. Some diseases may get worsened because of massage. Thus, consult the attending doctors before using the product.

**Q** Are there any things needing special attention during moving?

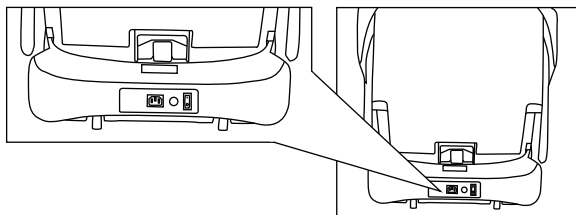
**A** **Pay attention to the following things during moving.**

Turn off the power switch and pull out the power plug.

- If the original packing box is unavailable, make sure the power line is not wound on the product, wind it and place it on the seat surface. When handling the product, keep the power line from falling off and rubbing with ground.
- If the original packing box is unavailable, properly keep other packing auxiliary materials and wrap the product with them to avoid scratch and vibration during handling.

**Q** Where is serial number of the product?

**A** **It is on back of the main body.**



**Q** I care about the sounds the product makes when being used.

**A** **It is caused by the core structure.**

**Q** Does it matter if the massage wheels have different massage intensities?

**A** **This phenomenon possibly exists during massage because of the core structure.**  
To simulate the most natural massage effect, the product is designed with a core structure allowing alternate back massage by a left massage wheel and a right massage wheel. During massage, the massage wheels possibly have slightly different positions on the back. That's why you have that feeling. It is not a fault.

**Q** How about monthly power consumption of the product?

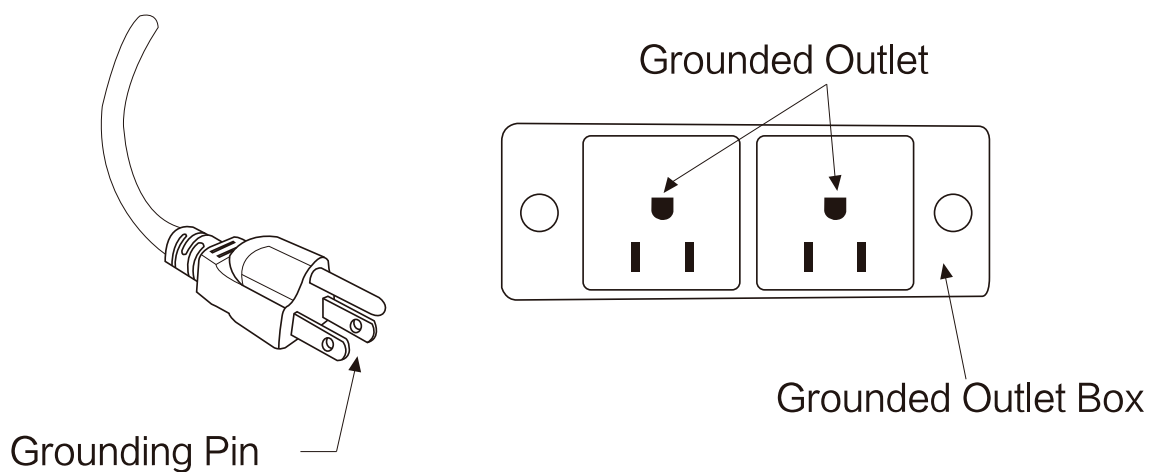
**A** **Supposing you massage for 30 minutes in two times (15 minutes for each time) on each day, about 0.6 kilowatt-hours will be consumed each month.**



# Grounding Instructions

This product must be grounded. If it should malfunction or break down, grounding provides a path of least resistance for the electric current to reduce the risk of electric shock. This product is equipped with a cord with an equipment-grounding conductor and a grounding plug. The plug must be plugged into an appropriate outlet that is properly installed and grounded in accordance with all local codes and ordinances.

**Danger-**Improper connection of the equipment-grounding conductor can result in a risk of electric shock. Check with a qualified electrician or service technician if the product will not fit the outlet, have a proper outlet installed by a qualified electrician. This product is for use on a nominal 120V circuit and has grounding plug that looks like that plug illustrated below. Make sure that the product is connected to an outlet having the same configuration as the plug. No adapter should be used with this product.





# Specifications

Description	Specifications
Power supply	120V, 60Hz
Power consumption	60W
Default timer	15min
Dimensions(L x W x H)	Upright: Approx. 45.7"x27.9"x39.4"
	Recline: Approx. 54.7"x27.9"x30.7"
Weight	Approx. 115.5 lbs
Usage condition	Environment temperature: 32°F~95°F
	Contrasting humidity: 20-80RH
Storage condition	Storage temperature: 32°F~95°F
	Storage humidity: 20-80RH
Maximum body weight of user	220lbs





