

Makes Wigs and Extensions **COME ALIVE**

CoolFlow
DUAL STYLER™

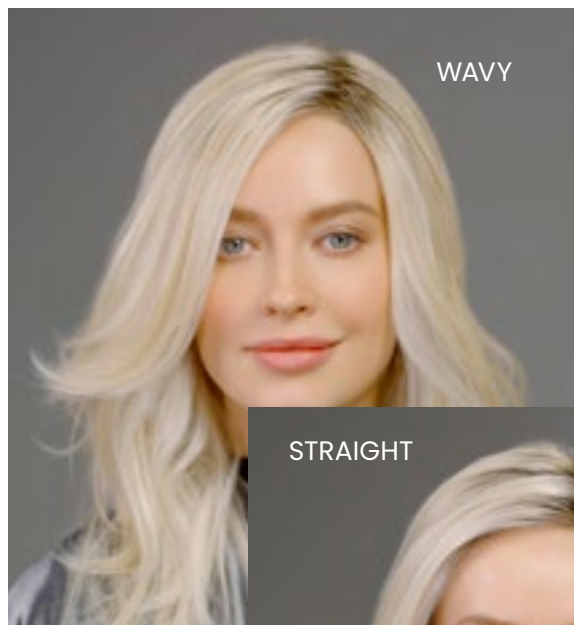
Code: TT3810
MSRP \$129

WHAT IS IT?

The first dual purpose digital curling and straightening iron made specifically for wigs and extensions.

WHO IS IT FOR?

Anyone who wants to add curls, straighten or sculpt synthetic or human hair wigs or extensions in just seconds.



WHAT'S SO SPECIAL?

- Patented* technology cools the hair or heat-friendly synthetics as you apply heat.
- Curls or straightens hair as low as 250°-320° F (121° C).
- Cools hair in seconds. No pinning required for synthetic heat-friendly fibers.
- No more burning fingers.
- Auto shut-off.
- Lets you create the perfect texture and style for your client.

HOW DO I USE IT?

The breeze function will automatically activate once the selected temperature setting has been reached. Complete instructions come with every iron.



Desired results using the Cool Flow Dual Styler

FREQUENTLY

ASKED

QUESTIONS

HOW IS THIS DIFFERENT FROM OTHER CURLING AND STRAIGHTENING IRONS?

Other Irons require higher temperatures which can be harmful and damage wigs and extensions.

CAN I USE OTHER CURLING OR FLAT IRONS ON SYNTHETIC WIGS OR EXTENSIONS?

Possibly, but standard flat or curling irons take much longer for the curl to form and hold or relax. They often require pinning and are difficult to handle until the hair cools. Cool Flow Dual Styler™ technology allows the curl to cool, form a curl or straighten hair instantly.

HOW LONG WILL THE CURLED OR STRAIGHTENED HAIR KEEP ITS SHAPE?

Until you apply heat again and straighten or curl.

CAN I USE IT ON ALL WIGS?

NO YOU CAN ONLY APPLY HEAT TO HUMAN HAIR OR HEAT-FRIENDLY SYNTHETIC FIBERS. WE RECOMMEND TressAllure SYNTHETIC STYLE-ABLE EFFORTLESS™ FIBER.

PRODUCT DIMENSIONS AND WEIGHT:

4" x 2³/₈" x 13³/₄" - 1¹/₂ lbs.

CARTON DIMENSIONS AND WEIGHT:

14³/₈" x 7¹/₂" x 4" - 2¹/₂ lbs.



TressTech™ Cool Flow Dual Styler™ TECHNOLOGY FOR WIGS

TressTech™ opens the door to self-expression and removes the limitations to style your wigs and extensions forever.

Now you can change the shape and texture of extensions and wigs as often as you change your mind.

.....
**Call your business consultant
today to place your order**

800-327-5555 [PRESS 9]

*CN Patent Application #202121273820x

COOLFLOWCONBRO

CoolFlow
DUAL STYLER™

