



Beginner Beekeeping – Week 2

Starting out with a Hive

Neighbor Management

- ☑ Communicate with your neighbors
- ☑ Tell them your plan without asking permission
- ☑ Your plan should show you have considered your neighbors use of their property
- ☑ Most neighbors are very interested



➤ [Read: Honeybee Etiquette, by Jennifer Lund, Maine State Apiarist](#)

Siting Your Hive: the ideal

- Sunny, south to southeast facing location
- Away from property lines or with flyway barriers
 - Sheltered from wind
- Landscape slopes away from the hive
 - Easy access



Siting Your Hive: do the best you can

- ~~Sunny, south to southeast facing location~~
- Away from property lines or with flyway barriers
 - Sheltered from wind
- ~~Landscape slopes away from the hive~~
 - Easy access



MSBA Best Practices

Hive Density

- Up to $\frac{1}{4}$ acre: 2 hives
- $> \frac{1}{4}$ to $\frac{1}{2}$ acre: 4 hives
- $> \frac{1}{2}$ to 1 acre: 6 hives
- 1 acre + : 8 colonies

Hive Placement

- Quiet, low traffic area
- Not against property line unless 6 ft barrier in place
- Use barriers to redirect flight
- Entrance should allow bees to fly across your property if possible

Water Source



Water Source



- ✓ **Provide landing spots for bees**
 - Plants, rocks, or floating corks
- ✓ **Nearer to the hive than the next nuisance**
 - (especially pools and hot-tubs!)
- ✓ **Visually obvious in the flight path of the bees**
 - Ideally about 80 yards from the hive
 - A little chlorine bleach is okay

Installing a package: It's okay to remain calm



Tips:

- Add the insert tray to screened bottom boards
- Add a pollen patty for brood production

Installing a package: Keep the bees calm



Tips:

- Mist the cluster, don't soak them
- If you can't install right away, mist them every few hours

[\[photos and video by Thalassa Raasch\]](#)

Installing a package: Check your queen first*



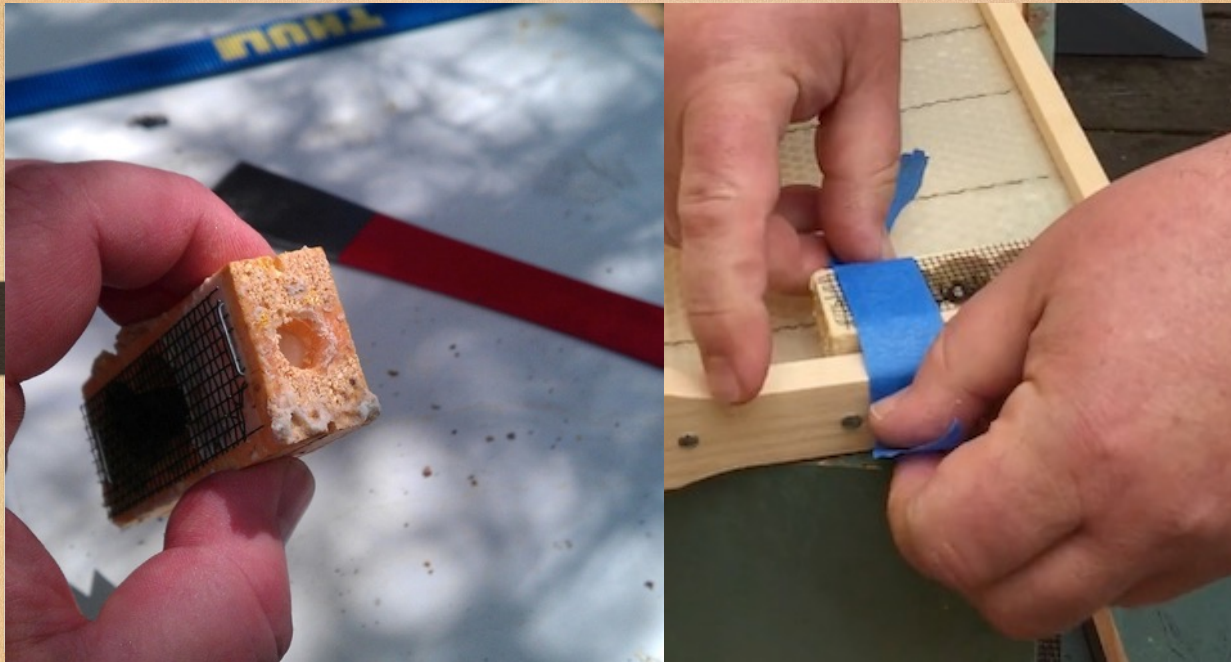
Tips:

- There are usually attendants in the cage
- (it's okay if they're not all alive)
- If the cage falls in, get some kitchen tongs

*if your queen is dead, call the supplier ASAP

Installing a package:

Make sure the queen is secure



Tips:

- Pull the cork from the CANDY END
- Attach the cage CANDY END UP
- Tape is good, or rubber bands

Installing a package:

➤ Thump



and

➤ Dump

Installing a package:

✓ **Keep your bee space tight**

(Frames should be shoulder to shoulder and centered)



➤ Add a feeder



➤ [See video of installing a package](#)

Installing a nucleus colony:

Light a smoker

- Open the nuc and let them orient to your hive's position
 - [Bees don't like a car ride. Let them calm down for a few hours.]
- Pull out one more frame than # of frames in your nuc from the bottom box of your hive
 - Gently smoke the nuc
- Place frames in the new box in the same order as they were in the nuc
- Replace the one missing frame on the outside
 - Add a feeder



Feeding Bees

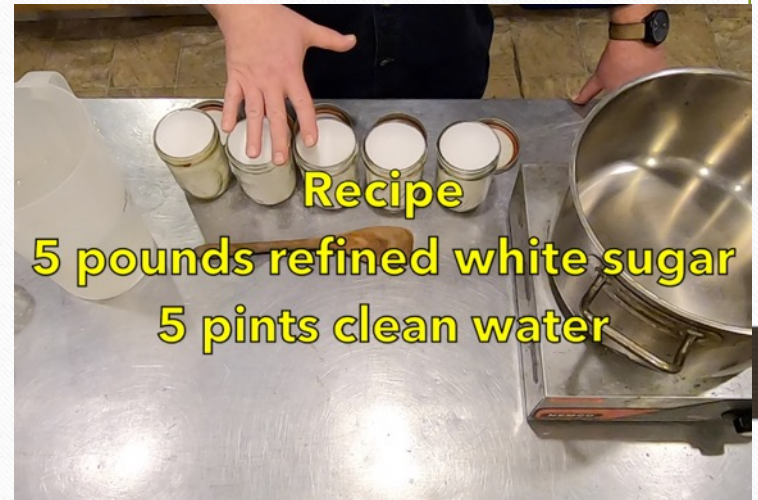
When to feed

- A new hive
- A weak hive
- A hive low on stores

What to feed

1:1 syrup in the summer

REFINED WHITE SUGAR



► [see: How I like to make syrup](#)

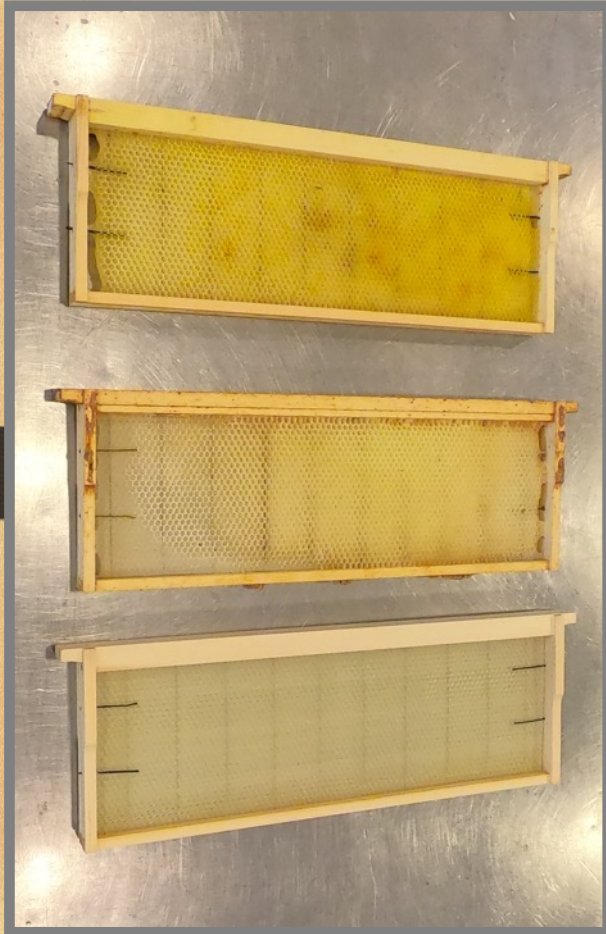
Feeding Bees

How to Feed
Hive top:
Jar with holes
Quail waterer
Bucket with screen



Avoid Boardman/entrance feeders
They promote robbing

How is my hive doing?



Is the colony drawing comb?

- ✓ Healthy queen
- ✓ Eggs
- ✓ Larvae



How is my hive doing?

Healthy Brood:

- Uniform appearance
- Few interruptions to the pattern
- Open brood (larvae) are pearly white
- Cappings are convex – not perforated or greasy

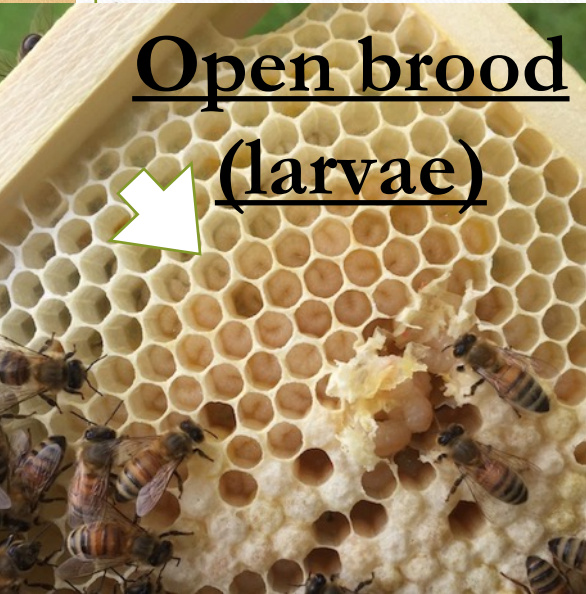
“Milk
Brood”



Capped Brood



Open brood
(larvae)



✓ If not, investigate further

Bee Math

Worker (21 days):

Egg for 3 days

Larva for 6 days

Capped for 12 days

Queen (16 days):

3, 5, 8

Drone (24 days):

3, 7, 14

Emerging
Brood



(See Bushfarms.com – [Here's the link](#))

Next Week:

- Summer Management
- Inspecting your hive
- Controlling diseases and pests