

Chemical Content Analysis

Date: 10-04-2019

Client: Vitality CBD Ltd.

Product: Vitality CBD Full Spectrum Berry 600mg

Batch No: 7145A-FSCBD245600

Lab ID: CBD0173

DOP: 12/03/2019

Visual Inspection:

Pale yellow liquid, translucent.

Method Summary:

0.1ml of sample was measured in a pipette and extracted in Methanol to provide a sample at 0.02mg/ml. CBD content was analysed on an Agilent HPLC fitted with a DAD detector. Content on HPLC was analysed against a standard calibration of CBD, CBN and THC, supplied by Restek, as well as CBDA and THCA supplied by Sigma-Aldrich. The results are presented in Table 1 and Figure 1 below.

| Compound | CAS Number | Concentration (mg/ml) | LoQ (µg/ml) |
|-------------------------------------|------------|-----------------------|-------------|
| Cannabidiol | 13956-291 | 20.46 | 0.1 |
| Cannabinol | 521-35-7 | BQL | 0.1 |
| Delta-9- Tetrahydrocannabinol | 1972-08-3 | BQL | 0.1 |
| Cannabidiolic Acid | 1244-58-2 | 0.07 | 0.1 |
| Delta-9-Tetrahydrocannabinolic Acid | 23978-85-0 | BQL | 0.2 |

BQL, Below Quantitation Limit.

% Content of Sample

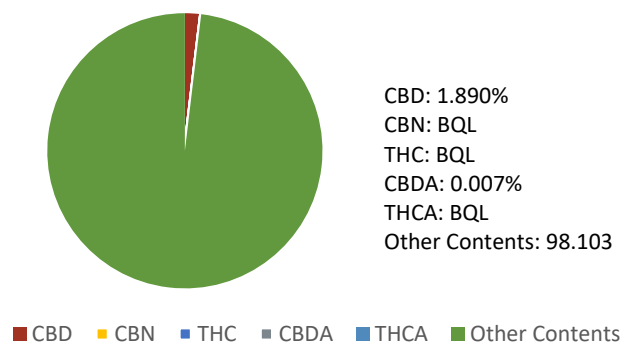


Figure 1. Pie chart of the analysis result.

Comments:

600mg of CBD in 30ml is equivalent to 20mg/ml

Acceptance Criteria: $\pm 5\%$ of target concentration CBD total, including CBDA, below legal limit of CBN, THC and THCA.

CBD- Cannabidiol

CBDA- Cannabidiolic Acid

CBN- Cannabinol. The legal limit for this compound is 1mg per container.

THC- delta-9-Tetrahydrocannabinol.

THCA- delta-9-Tetrahydrocannabinolic Acid. The legal limit for both THC and THCA this compound is 1mg per container

The sample passes all acceptance criteria for CBD, CBN and THC.

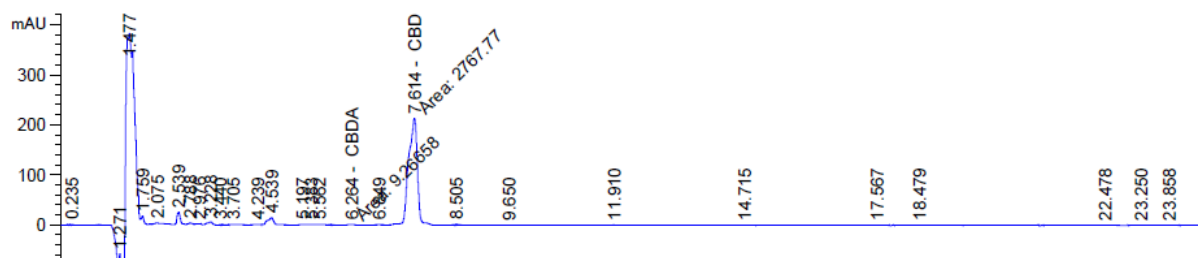


Figure 2. Chromatogram of the analysis

Analysis By:

Lawrence Theobald

Approved By:

Mark Portsmouth. Analytical Chemistry Consultant

DATE: 10-04-19

Ingredient Breakdown

All Information as declared by the supplier

Extract Batch No:-TM57.5

Date of Manufacture:-13-11-2018

Date of Analysis:-26-11-2018

Summary:

In the production of Full Spectrum and Full Plant products, Hemp Oil was used. The supplier of this oil has supplied their own Certificate of Analysis, which is presented below. In the final products, these amounts will be lower, based on the respective amounts used in the recipe.

CANNABINOID PROFILE

| | wt% | mg/g | |
|--------------|--------|-------|-----------|
| CBDV | 10,71 | 107,1 | 10,71 wt% |
| CBDA | 0,75 | 7,5 | 0,75 wt% |
| CBGA | < 0.03 | < 0.3 | |
| CBG | 3,23 | 32,3 | 3,23 wt% |
| CBD | 57,65 | 576,5 | 57,65 wt% |
| THCV | 4,10 | 41,0 | 4,10 wt% |
| CBN | 0,04 | 0,4 | 0,04 wt% |
| CBC | < 0.03 | < 0.3 | |
| THC | 0,14 | 1,4 | 0,14 wt% |
| THCA | < 0.03 | < 0.3 | |
| TOTAL | 76,62 | 766,2 | |

Measurement units and abbreviations: wt% = weight percent, mg/g = milligram/gram, BLQ = Below the Limit of Quantitation (0.03 wt%).

Table 1: Cannabinoid profile of raw hemp oil stock used in production, as declared by supplier.

DATE: 12/03/2019

Glossary:

CBDV- Cannabidivarin
 CBDA- Cannabidiolic Acid
 CBGA- Cannabigerolic Acid
 CBG- Cannabigerol
 CBD- Cannabidiol
 THCV- Tetrahydrocannabivarin
 CBN- Cannabinol
 CBC- Cannabichromene
 THC- delta-9-Tetrahydrocannabinol.
 THCA- delta-9-Tetrahydrocannabinolic Acid.