

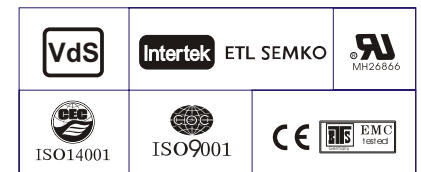
### Specification

Nominal Voltage	12V	
Nominal Capacity(20HR)	22.0AH	
Dimension	Length	181±2mm (7.13 inches)
	Width	76.5±1mm (3.01 inches)
	Container Height	170.5±2mm (6.73 inches)
	Total Height (with Terminal)	170.5±2mm (6.71 inches)
Approx Weight	Approx 5.60 Kg (15.21lbs)	
Terminal	T3	
Container Material	ABS	
Rated Capacity	22.0AH/1.10A	(20hr, 1.80V/cell, 25°C/77°F)
	20.0AH/2.00A	(10hr, 1.80V/cell, 25°C/77°F)
	17.5AH/3.51A	(5hr, 1.75V/cell, 25°C/77°F)
	15.9AH/5.30A	(3hr, 1.75V/cell, 25°C/77°F)
	12.9AH/12.9A	(1hr, 1.60V/cell, 25°C/77°F)
Max. Discharge Current	300A (5s)	
Internal Resistance	Approx 15.0mΩ	
Operating Temp. Range	Discharge : -15~50°C (5~122°F)	
	Charge : 0~40°C (32~104°F)	
	Storage : -15~40°C (5~104°F)	
Nominal Operating Temp. Range	25±3°C (77±5°F)	
Cycle Use	Initial Charging Current less than 6.0A. Voltage	
	14.4V~15.0V at 25°C(77°F)Temp. Coefficient -30mV/°C	
Standby Use	No limit on Initial Charging Current Voltage	
	13.5V~13.8V at 25°C(77°F)Temp. Coefficient -20mV/°C	
Capacity affected by Temperature	40°C (104°F)	103%
	25°C (77°F)	100%
	0°C (32°F)	86%
Self Discharge	Leoch LPC series batteries may be stored for up to 6 months at 25°C(77°F) and then a freshening charge is required. For higher temperatures the time interval will be shorter.	



### Applications

- ◆ Electric tools
- ◆ Vehicle in place of walking
- ◆ Lawn mowers
- ◆ Golf trolleys and golf cart
- ◆ Portable apparatus, lights and instruments;
- ◆ Electric toys
- ◆ Illumination light
- ◆ Fire alarms
- ◆ Portable power
- ◆ Wheelchairs
- ◆ Medical equipments.



### Constant Current Discharge (Amperes) at 25 °C (77°F)

F.V/Time	10min	15min	20min	30min	45min	1h	2h	3h	4h	5h	6h	8h	10h	20h
1.85V/cell	29.3	24.6	21.5	15.5	12.3	9.99	6.20	4.84	3.92	3.18	2.78	2.27	1.89	1.08
1.80V/cell	37.4	29.8	25.5	18.3	14.3	11.2	6.77	5.20	4.18	3.42	2.98	2.40	2.00	1.10
1.75V/cell	41.1	32.5	27.4	19.0	14.9	11.7	7.02	5.30	4.28	3.51	3.06	2.45	2.02	1.12
1.70V/cell	44.8	34.7	28.8	19.8	15.4	12.1	7.30	5.45	4.39	3.60	3.12	2.48	2.04	1.13
1.65V/cell	48.4	36.9	30.6	20.8	15.8	12.5	7.50	5.68	4.54	3.70	3.19	2.52	2.08	1.14
1.60V/cell	52.5	39.5	32.6	22.0	16.5	12.9	7.76	5.85	4.68	3.82	3.26	2.54	2.10	1.15

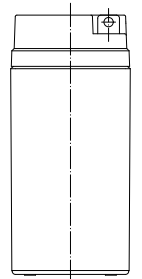
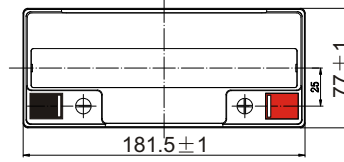
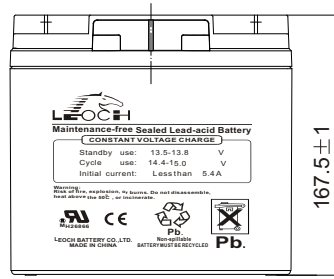
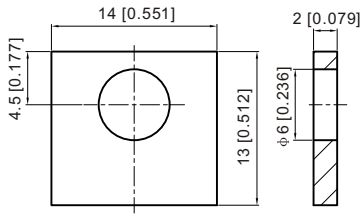
### Constant Power Discharge (Watts/cell) at 25 °C (77°F)

F.V/Time	10min	15min	20min	30min	45min	1h	2h	3h	4h	5h	6h	8h	10h	20h
1.85V/cell	54.6	46.5	41.0	29.8	23.8	19.4	12.1	9.45	7.67	6.25	5.49	4.48	3.74	2.13
1.80V/cell	68.9	55.3	47.8	34.7	27.5	21.6	13.1	10.1	8.15	6.69	5.86	4.75	3.96	2.14
1.75V/cell	74.8	59.8	51.0	35.9	28.4	22.5	13.6	10.3	8.32	6.86	6.01	4.83	4.00	2.16
1.70V/cell	80.3	63.4	53.3	37.2	29.4	23.1	14.1	10.5	8.52	7.01	6.13	4.89	4.03	2.20
1.65V/cell	86.1	67.0	56.3	39.0	30.0	23.8	14.4	11.0	8.79	7.20	6.26	4.96	4.11	2.22
1.60V/cell	91.9	70.8	59.4	40.8	31.0	24.5	14.8	11.2	9.03	7.40	6.38	5.00	4.15	2.23

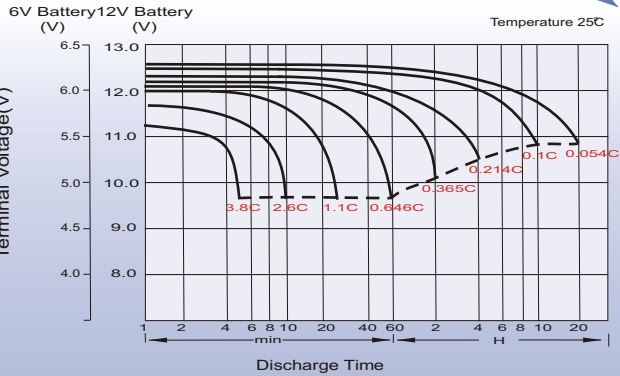
## Dimensions

### T3 Terminal

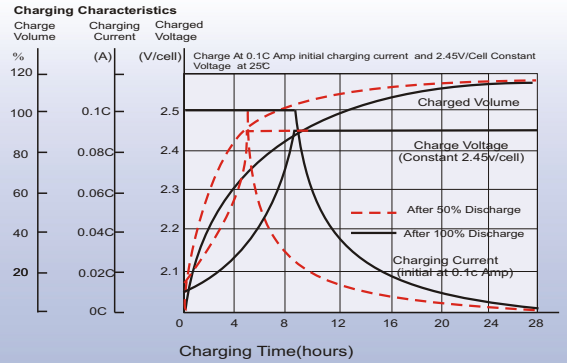
Unit: mm [inches]



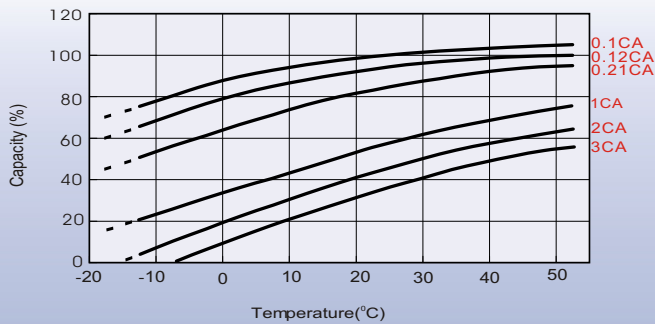
## Discharge Characteristics



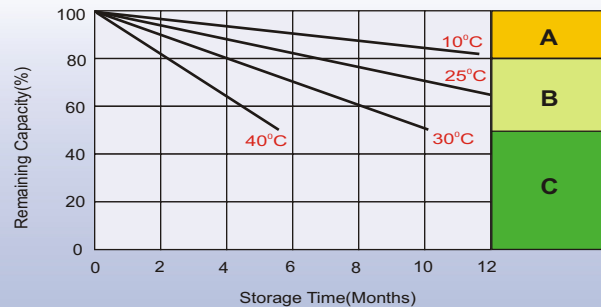
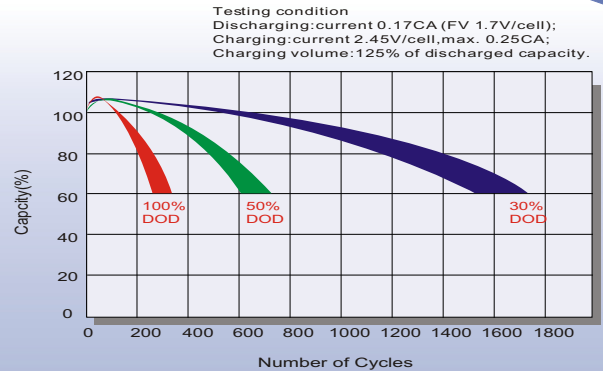
## Charging Characteristics



## Temperature Effects in Relation to Battery Capacity



## Cycle Life in Relation to Depth of Discharge



## Self Discharge Characteristics

- A** No supplementary charge required  
(Carry out supplementary charge before use if 100% capacity is required.)
- B** Supplementary charge required before use. Optional charging way as below:
  1. Charged for above 3 days at limited current 0.25CA and constant volatge 2.25V/cell.
  2. Charged for above 20 hours at limited current 0.25CA and constant volatge 2.45V/cell.
  3. Charged for 8~10 hours at limited current 0.05CA .
- C** Supplementary charge may often fail to recover the capacity.  
The battery should never be left standing till this is reached.