



# NEWSLETTER DECEMBER 21



[WWW.WELLANDVALLEYFEEDS.CO.UK](http://WWW.WELLANDVALLEYFEEDS.CO.UK)



# Festive WELLAND VALLEY FEEDS WORDSEARCH

The lucky winner of this month's festive wordsearch will be chosen on the 20th December 2021. The winner will receive a £50.00 Welland Valley Feeds voucher to spend in store. This month there is a hidden word... the clue is:  
Your pets always know when you've visited this place, and they love to come and visit too. It's like a sweet shop for animals!

FTMEVTF A K T R I N H D Y U U Q N Z G E V K U Y W D O  
 G I I Y F G E M A R T O B W F S X D R E W J I Z M E R R Y O  
 G P T S Q X E G I Z P F E B P F O O T W E A R D D S S T Y H  
 M Q Z Y M F D T J M G E A W C P G W M U L N U V L O R T L T  
 L G X S D F E M K R A R O Q O Z F E Q G L I Z N H H N O B G  
 Y Y E R W Y B G H C S C C O A T A Q A J A Y U R S N O W V P  
 G O O T K A Q W I Q S O K C R J F F X R N L C L N S V D E S  
 I M V A G Q X P E Y J L I P O E Z H F X D W L T E H N K E C  
 O L M M M I I S Y Q J A Y M X J U N L N V Q O O I S L K Z I  
 F E B S W X I B R V G Z C O B W B S Z J A X T Y L A B J Q O  
 U B L X Z H F U U J U M F R T B L U E E L E H C M S K I D L  
 R T W S F B F M J C O R Y L Q O Z Q X A L M I I Z T L W T A  
 F N X U P H M F T I K R R Z D U U U W T E K N D S C X L P L  
 Y R W C S O A X R M V V X O K P W B S W Y A G B R S H W X S  
 H H T G O Y R Z P K L H K F E S T I V E F E G C A L N O V I  
 A J L Z H K Q X Y T G M T T R K M C L H E Q M I E U P O H G  
 A F G F I S Z I R I U N R T Y B B B Y S E U P V D Q D T P B  
 U I E D P F M D W H J R O S M R U Q O L D E K Q F X Z A K N  
 U K Q S O W Y A X B T B K L E A P S F J S S H B C Z A T T D  
 X Z G L P K I T H K M I N E B T K I P E A T H E A R U G A Z  
 R L O P F R G S G E S U R D Y C Y X K U L R N O A C Y V B L  
 X I W V S E A O Q Z H U H G F K P Q Y M A I T P L A J R Z H  
 O L E G Q I T A R N T M F E J U L F E C N A N W I L D B X U  
 H Z Q M R N H L R L C F T S G A E R B A T N C E P S Y K O O  
 C O S J B D E J U P W E S I X N P U C N Z C H R I S T M A S  
 I R J I K E R C D U B X W F N K W A D X F K Q F H D S F P M  
 Y K D A X E I Q I M I V P G B J G I F T S E C G X D N D V D  
 D G S U A R N R X T O Y M M G W W H P S X V K N Y F S M R L  
 P M U R G V G I I G J G X K L Y Y J O G E D J B K T B P X F  
 Y L M A G A A W L T M H Z Q F R Z V T C T T W R A P P I N G

MERRY  
 EQUESTRIAN  
 REINDEER  
 CHRISTMAS  
 CANINE  
 BAUBLE  
 GIFTS

ANIMAL  
 GATHERING  
 CLOTHING  
 FOOTWEAR  
 TURKEY  
 SLEDGE  
 SNOW

AGRICULTURE  
 MISTLETOE  
 WRAPPING  
 FESTIVE  
 FELINE  
 HOLLY  
 FEED

NAME:  
 ADDRESS:  
 POSTCODE:  
 EMAIL:  
 TELEPHONE:

MSF Welland Valley Feeds- Competition Terms:

When entering this competition, you are agreeing to us using your information for our marketing purposes. The information is NOT shared with any third party. We will announce the winner on our Facebook page and in the next issue of our Newsletter.

Please indicate how you would prefer us to contact you: Post  E-mail  Telephone

SEND/EMAIL/DROP OFF your entries by the 20th of the month at 9:30am.

POST: MSF Welland Valley Feeds Limited, Rockingham Road, Market Harborough, Leics, LE16 7QE

EMAIL: sales@wellandvalleyfeeds.co.uk

OR drop off your entry in store





WELLAND VALLEY  
FEEDS LTD  
ROCKINGHAM ROAD  
MARKET HARBOROUGH  
LE16 7QE  
01858 461463  
SALES@WELLANDVALLEYFEEDS.CO.UK  
WWW.WELLANDVALLEYFEEDS.CO.UK

PLEASE NOTE THAT PRICES IN THIS NEWSLETTER ARE CORRECT  
AT THE TIME OF PUBLISHING AND ARE SUBJECT TO CHANGE AT  
ANY TIME

## Come Upstairs!

At long last our new upstairs clothing and footwear department is open! We're super excited about this beautiful new space for you to shop. Come and see us to browse our latest lines including Ariat, Toggi, Hoggs, HY, Aubrion, Moretta, Treksta & many more. It's not just equestrian wear... we also have super stylish country wear, outdoor work wear, walking wear & casual wear too!

## Late night SHOPPING

WEDNESDAY 8TH DECEMBER  
WEDNESDAY 15TH DECEMBER  
4PM - 8PM

This year we will be holding two late night shopping events in December. Come and join us for drinks & nibbles and a festive evening shopping our newest collections. On the evening we will also be holding a lucky dip. With a guaranteed prize each time and free to enter. Our lucky winners will be in with the chance to win up to £100 to spend in store on the night!

Please note that our warehouse will be closed for bulk collections after 5:30pm.

## Christmas DELIVERIES

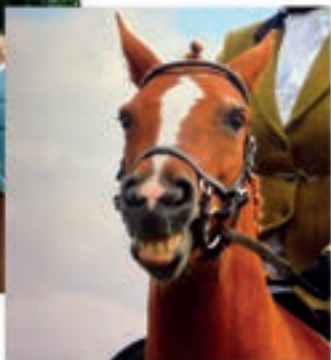
We won't be delivering on Friday 24th on the week up to Christmas or on Monday 27th December. If you normally have a delivery on a Friday, we ask that you please stock up on your delivery for the 17th to ensure you have enough to see you through! If you have any questions about deliveries over the festive period, please don't hesitate to give us a call or pop in and speak to a member of our team.







BETH & HER HORSE TOFFEE



## WHAT'S THE TEAM BEEN UP TO?

### A WARM WELCOME...

We're delighted to welcome some new starters this month!

Beth started with us in October. Previously she worked at Wickes as an Operations Manager where she picked up valuable business & retail skills. So far she has picked up our systems super quickly and is already proving to be a real asset to the team.

Beth is also an animal lover, she has 1 Horse, 3 Chickens & a cat called Schnapps! Her horse Toffee is a chestnut mare (We know, she's brave right?!) and she enjoys the occasional competition, show jumping, and hacking.

We are also welcoming Amber & Sam to the team. Amber will be assisting on the shop floor whilst Sam will be working out in the warehouse assisting with deliveries and keeping our busy shop floor stocked.

### THEY'RE BACK!

Jayne has also returned to the team after 16 years! Jayne is an OG Welland Valley Feeds team member, joining us originally when the store was at Leicester Road in Harborough. Her passion lies with horses and dogs, owning 2 cobs and 2 whippets. Jayne will be assisting in the warehouse as a forklift and delivery driver, welcome back to the team Jayne!

Barb has also rejoined the team after 10 years! Having previously worked in our busy office, Barb will now be working part time in our new clothing and footwear department.



*Congratulations!*

For those of you that don't know, Emily & her partner Luke recently got engaged! Congratulations Emily & Luke, and here's to hoping for a long and happy marriage!

### RECENTLY QUALIFIED

Ellie has recently passed her AMTRA Animal Medicines exams and is now qualified to advise and prescribe Companion Animals, Equine & Farm medicines. She is already proving to be knowledgeable in the field and having another RAMA (Registered Animals Medicine Advisor) on the team will be a real asset to the company.



ANIMAL MEDICINES TRAINING REGULATORY AUTHORITY



HOW SATISFYING IS OUR NEW SOCK WALL?



# Christmas Dinner

WHAT'S SAFE FOR OUR PETS?

Christmas dinner is certainly a feast for us, but can it be a safe for our pets too? Many foods are harmless for our cats and dogs to consume. But there are a few things that we should definitely avoid feeding them over the festive period. And it's not just food you should be careful about, plants like holly (berries & leaves) & mistletoe can be harmful too!

## Yes

TURKEY (BONES & SKIN REMOVED)  
CRANBERRY SAUCE  
POTATOES  
CARROTS  
PARSNIPS  
GREEN BEANS  
BRUSSELS  
BROCCOLI  
CAULIFLOWER



## No

CHOCOLATE SWEETS  
RAISINS, CURRANTS, SULTANAS  
MINCE PIES  
CHRISTMAS PUDDING  
COOKED BONES  
ONIONS, GARLIC, LEEKS & CHIVES  
STUFFING  
NUTS  
PIGS IN BLANKETS!



“Even though your pet will find bacon wrapped sausages simply delicious, pigs in blankets are too high in salt and fat for them. Pork products should only be fed as a Christmas dog treat if it's a lean cut and always ensure that it's properly cooked.”  
- PURINA



# LIVER FLUKE

## ARE YOUR LIVESTOCK COVERED?

**LIVER FLUKE** is an increasing problem for UK farmers, but what is it and how do you make sure you are covered? Let's take a look at this interesting article from NADIS-

### INTRODUCTION

Fasciolosis is the disease caused by liver fluke infestation. In the sheep sector slaughterhouse condemnations and laboratory surveillance show it is increasing and being seen further north and east in areas previously considered to be fluke free.

Climate change is reducing the predictability of the geographical range and season of fluke and the movement of infected sheep into previously free areas allows the parasite to establish.

The liver fluke parasite, *Fasciola hepatica*, infects the liver of both cattle and sheep. Adult fluke are 2 to 3cm in size and live in the bile ducts laying eggs which enter the animals intestinal tract and end up on pasture. The eggs hatch and enter a specific species of snail, *Galba truncatula*. This stage requires wet and warm conditions above 7 to 10°C occurring from late spring to mid-autumn. The fluke develops in the snail, hatches out onto pasture and forms a cyst on the grass which is eaten by sheep. The immature fluke migrate through the liver structure causing damage as they develop into adults. It takes 10 to 12 weeks after ingestion for the fluke to reach maturity and start to lay eggs.

Acute cases occur from three weeks after high numbers of immature fluke are eaten by the sheep. It causes severe disease due to massive blood loss in the liver or from secondary infection of the damaged liver by clostridial bacteria (Black Disease). Sudden deaths are the usual first indication of acute fluke. Others in the group may be lethargic and have reduced grazing activity. Gathering may be difficult because sheep have abdominal pain and are reluctant to run. Sudden deaths may affect up to 10 percent of sheep at risk causing grave financial loss.

Sub-acute fluke presents with rapid loss of body condition and poor fleece quality despite adequate flock nutrition. Typically, some sheep present with severe depression, inappetance, weakness and may be unable to stand. Losses usually occur from December onwards but may be seen much earlier (October) with a severe challenge. The damage from sub-acute fluke has a huge effect on growth rate, milk yield, finish weights and body condition. Mortality rates can be high but deaths are usually only seen after a period of clinical signs. The major signs of chronic fluke are very poor body condition, poor fleece quality and in many sheep, bottle-jaw.

### DIAGNOSIS

A confirmed diagnosis can be made from post mortem findings where the liver is enlarged with bleeding below the surface and immature fluke are present in the liver tissue. Blood samples from suspected cases can be also be tested for elevated liver enzymes and low blood protein levels.

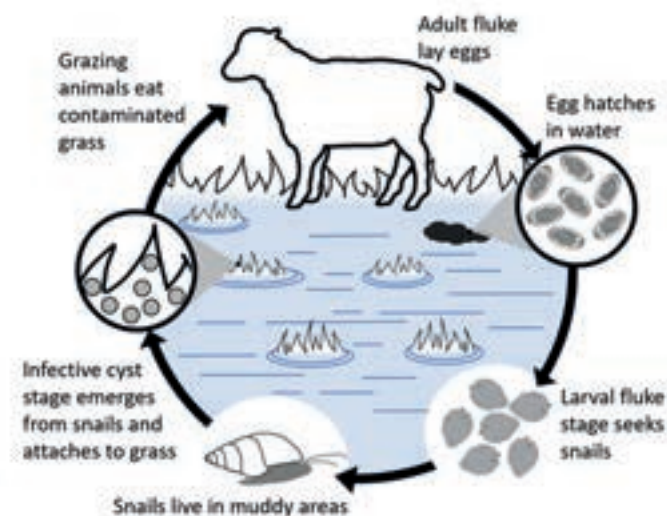
Chronic fluke can be diagnosed by demonstration of fluke eggs in faecal samples, although the secretion of eggs can be intermittent. Fluke egg counts from individual infected sheep and pooled samples can test negative. Faecal samples can also be tested using the coproantigen ELISA test which can detect adult fluke infection 2 to 3 weeks earlier than a conventional fluke egg count. Blood samples can be used to check for evidence of exposure to fluke but they do not indicate current infection - antibody levels to fluke remain high for many months after effective treatment. A veterinary diagnosis for poor condition affecting many sheep should also be sought. Other causes include: inadequate energy, protein or mineral nutrition; chronic parasitism including resistant worms; severe lameness; Johne's disease; Maedi-Visna and poor teeth.  
- [www.nadis.co.uk](http://www.nadis.co.uk)

### TREATMENT

Understanding the age of fluke being treated is essential. This can be calculated at the time of year that the burden has been detected as mentioned in the above article. Please speak to a Vet or RAMA (registered animal medicines advisor) available in store to enquire about the medicines available to treat fluke.

### PREVENTION

Farms with a suitable snail habitat but no evidence of liver fluke need to keep fluke out with effective biosecurity. When buying in sheep, liver fluke quarantine treatment strategies should be considered based on the risk posed by the incoming sheep and the risk status of the farm. Farms with no fluke history must continue to monitor for the disease based on abattoir reports or testing. Find out more at [www.nadis.co.uk](http://www.nadis.co.uk).



### CLINICAL SIGNS

Liver fluke causes three types of disease - acute, sub-acute and chronic depending upon the level of challenge and the animals' resilience. The timing of disease depends on the timing of infestation of the snails but acute is usually seen from August to October, sub-acute from October onwards and chronic from December onwards.



# A JOB WITH *Horses*

**Putting our horses first** is a given for any groom or horse owner, although we always put their needs above our own, it's important that we look after ourselves too. After all, if we are injured or unable to work, we can't look after the horses and the physical, mental & potentially financial strain can soon take its toll.

Being a groom is undeniably hard work, the hours are long, we are constantly exposed to the elements and we often push ourselves to the limits to ensure that the horses we love get the best care we can give. Investing time in self care is often at the bottom of our list of priorities, but we must realise that taking care of ourselves, is just as important as taking care of our horses too.

Making sure that we are fit enough for the job is vital. It not only makes the day to day of being a groom easier, but also ensures that we are reducing the risk of getting injured on the job. You may think that the work itself is enough to increase our fitness- although this may be true, we quite often aren't using our bodies correctly whilst on the job. In turn, this can lead to strain or injury. It may seem like there is no time in the day to commit to exercise, but even just doing 10-15 minutes of strength training or cardio per day can have a positive impact on how we perform at work. For example, by simply training your core strength, it will improve your posture, support your back, improve your balance, and also have a positive effect on your riding too. Strengthening your body will in turn help to reduce daily aches and pains, which can prevent us from doing our job comfortably and efficiently!

You should also think about the way you are fuelling your body. Let's look at it from a different perspective- would you expect an event horse to perform well at a show after being fed only low energy feed? The answer is no! Ensuring that you have a good balanced diet to fuel your workload, not only gives you the energy to 'get the job done', but also has a great impact on how you feel too. After all, nobody likes feeling exhausted all the time! Having an unbalanced diet can cause fatigue and also add to muscle aches and pains. When constantly on the go, multivitamins, shakes or smoothies can be a super convenient way of making sure your body is getting what it needs between meals. You can easily take these with you on the go for an extra boost.

Mental health can also have an impact on not only your work life, but your personal life too. Make sure you are looking after your mental health by creating a little bit of 'you' time during your day. Whether its 5 minutes alone time, listening to your favourite playlist whilst riding or on the way home, an evening bath and some self care or just taking a day's holiday. Looking after your mental health is just as important as looking after your physical health too. Meditation is becoming more and more popular, and for good reasons too. Taking the time to unwind after a stressful day just by sitting quietly and clearing your mind has vast health benefits, including drastically lowering your stress levels.

Make sure your work and personal life are balanced. Living to work doesn't do anybody any good, make sure you make time for 'play' too.

Winter is well and truly upon us, and the colder weather can make working outdoors even more challenging. Cold muscles can increase the chance of injury and muscle strain, therefore, making sure you are layering up well and keeping yourself warm is crucial. A thermal base layer and Gilet or body warmer under your coat is a great way to keep yourself warm. With the majority of body heat being lost through our heads, the use of an ear warmer or warm hat can be really beneficial too.

Cold fingers and toes aren't nice. Make sure you are wrapping them up too with gloves and warm socks. Footwear with a neoprene lining is a great choice to help keep your feet and toes toasty warm in the colder weather.

Lastly, the cold wind can soon take a toll on our skin. Chilblains and chapped skin are common problems amongst grooms and people that work outdoors. Avoid chilblains by keeping your limbs warm. Treat chapped and dry skin with creams to help them heal. We highly recommend the O'Keeffe's range of moisturisers, as it not only soothes & protects but also helps the healing process too.

The moral is, a healthy groom is a happy groom. Although it's our job to look after the horses and their environment, it's just as important to look after ourselves too!



- 1- O'KEEFFE'S WORKING HANDS CREAM 96G  
SKU: 39303 £6.95
- 2- PRO WORK NECK WARMER  
SKU:34416 £4.94
- 3- HY MELROSE BOBBLE HAT  
£17.99
- 4- AUBRION WINTER YARD GLOVES  
XS-L £5.24
- 5- GRUBS SOCKS  
SIZES 4-7 £5.99
- 6- HOGGS FIELD SPORT NEOPRENE LINED  
WELLIES SIZES 4-12 £79.50

# MUD FEVER IN HORSES

## WHAT IS IT AND HOW DO WE MANAGE IT?

We may have all heard the term 'mud fever', and many of us will have owned or dealt with horses that suffer from it. But what actually causes this condition, and what is the best way to treat it?

During the winter months, rain and wet conditions are inevitable. Our horses, still needing valuable turnout time, are often spending large periods of the day in waterlogged or muddy paddocks. This exposure can cause the skin to become soft, leaving it vulnerable to irritation and damage. This is when the bacteria in the mud can penetrate and wreak havoc! Mud fever usually presents itself with scabs most commonly on the pastern, however, it can also be seen to spread up the lower legs too. Bacteria can soon thrive underneath the scabs, causing the condition to worsen. It can be very painful to the horse and difficult to deal with, as the horse may not tolerate you touching the area.

Let's go over the common causes: Prolonged exposure to wet and muddy conditions, broken or damaged skin in the commonly affected areas (between the heel and fetlock), too frequent leg washing without drying out properly afterwards, or having weakened immune system.

### WHAT ARE THE SYMPTOMS & EARLY SIGNS?

If mudfever is caught early, it can be a lot easier to manage. Make sure you check your horse's legs daily and look out for the following;

- Scabs appearing on the lower legs or heels
- Broken or damaged skin on the lower legs or heels
- Matted hair or bald patches
- White, yellow or green discharge between the skin and the scabs
- Heat, pain or swelling in the lower legs and heels
- In severe cases mud fever can also cause lameness.



Credit: mud fever images VetPartners

### HOW DO WE TREAT IT?

To get a solid diagnosis, it's always best to speak to your vet before starting treatment as some of the symptoms of mud fever are similar to other conditions such as malanders.

Once a proper diagnosis has been established, there are steps we can take to help to treat mud fever.

Cut it off at the cause! Bringing your horse in from the wet and muddy conditions and allowing their legs to dry properly after cleaning them. This will help to prevent the bacteria from entering the skin. Try and give your horse dry turnout if possible, and remember to keep your stables clean too. Bacteria from a dirty bed can also cause mud fever, so avoid deep littering and skip out your stable as often as possible.

Removing the scabs from the affected area will help allow air to reach the skin and promote healing. However, you need to approach this step with caution! Mud fever causes the skin to become very sore, and your horse may react to try and keep you away. To help make it more comfortable for them you could always soak the affected area with an anti bacterial solution first, to soften the scabs and make them easier to remove. If using liquid to soak the area make sure that it is then dried thoroughly afterwards.



HIBISCRUB  
500ML £7.94  
5LTR £44.94



LINCOLN  
EQUO-SCRUB  
500ML £8.40



LINCOLN  
EQUO-CREM  
400G £12.49

Make sure you are keeping the affected area clean by washing it at least twice a day. Something like diluted hibi scrub as mentioned before or equo-scrub by Lincoln makes an ideal rinse to kill off any bacteria. Again as previously mentioned, make sure the area is thoroughly dried off afterwards. Applying a specialised cream or ointment may help by creating a protective barrier over the affected area.

Clipping or removing the feathers will make it more manageable by giving you easier access to clean and monitor the condition.

Applying stable bandages can support the leg to reduce any potential swelling, as well as keeping the area clean and dry.



## GOOD NEWS!

There are definitely management techniques we can adopt to help prevent mud fever from starting, let's take a look at what we can do;

Manage your grassland! By rotating your grazing, you can reduce the risk of your paddocks becoming poached. This will therefore reduce the amount of time your horses are standing in deep mud. However, rotating paddocks isn't always possible. If you don't have the facilities to do this, you still have a few options. Mud boots or turnout boots can be a great help in the battle against mud fever. As long as you ensure that the legs are clean and dry before they are put on, and take care to wash the boots off daily. Any mud or grit that is on the inside of the boot when they are put on could have the opposite effect, causing rubs on the legs and leaving them vulnerable to infection. You could also think about stabling your horse for longer periods (e.g overnight) or using an area for dry turnout.

Try to avoid washing off your horse's legs when they have come in from the field. If you allow the mud to dry it can be easily removed with a soft brush. If washing the legs is unavoidable, make sure you dry them off thoroughly afterwards.

Barrier creams are another handy tool. They create a protective waterproof layer over the skin, protecting it from the wet and mud, and can also help to prevent the mud from sticking to the legs too. They should, however, be used carefully. If bacteria is trapped on the wrong side (between the skin and the cream) it can be a perfect environment for the bacteria to grow.

## DID YOU KNOW?

“Mud fever can also occur in other areas of the body such as on the belly, and on the back where it is called rain scald. Rain scald can also be triggered by spending long periods in damp, mild condition, or from excessive sweating under tack and rugs.”

- FROM THE BHS



**ARMA MUD SOCKS** are made from neoprene are designed to help prevent mud fever by keeping the legs mud free and to protect against injuries in the field. Providing full coverage of the lower leg and shaped out of soft, flexible shock absorbing neoprene for comfort. Airflow perforations help prevent legs from over heating. Suitable for front or hind legs. Fastened with touch close straps. Set of 2. Available in Pony, Cob & Full £22.99 (subject to availability).



### MUD FEVER BOOT FROM WOOF WEAR

is a Breathable & Waterproof turnout boot which keeps your horse's legs clean and prevents and aids recovery from Mud Fever.

The Boot seals the leg between the knee and below the heels. The loose fitting breathable and waterproof fabric then creates a micro-climate to prevent the warm and damp conditions in which bacteria thrive. Available in S - XL £59.94.

### NETTEX SEVEN DAY MUD

**AWAY** is a unique product that helps to prevent the build-up of mud to all areas of the horse resulting in easier winter grooming. It can be used all year round to aid quicker grooming as mud, muck and dirt simply brush away easily leaving a smooth coat.

It is ideal to use in the winter during adverse weather conditions to help keep mud at bay. It can be used on the body, legs, mane and tail and is suitable for all horses and ponies. SKU:46741 £9.95



### THE LINCOLN MUDDY BUDDY RANGE

Their muddy buddy scrub (SKU: 97113 £6.95) is a powerful antibacterial leg wash for easy removal of mud and dirt from the legs of horses. Contains a powerful broad spectrum antibacterial agent to help overcome and combat harmful bacteria present in wet, muddy, dirty environments. It will soothe and cleanse helping to maintain prolonged hygienically clean skin.

The muddy buddy ointment (SKU:97112 £9.95) is a soothing, powerful and protecting antibacterial waterproof barrier for horses. For application to the heels and lower legs in wet and muddy conditions. It will soothe the affected area and offer an effective, protective waterproof barrier.

The muddy buddy powder (SKU: 97111 £9.95) is a powerful antibacterial water repellent powder for application to the lower legs of horses in wet and muddy conditions. Beneficial to horses prone to irritation from a wet and muddy environment. Effectively protects the area and offers a powerful water repellent barrier to keep the area hygienically clean. Shields against mud and water.







*Christmas*  
**GIFT GUIDE**  
WELLAND VALLEY FEEDS





**ARIAT**



ARIAT IDEAL 3 DOWN  
JACKET COLOURBLOCK  
XS - XXL £115.00

ARIAT NEW TEAM  
SOFTSHELL JACKET BLACK  
XS - XXL £105.00

ARIAT WOMENS STABLE  
JACKET RHUBARB  
XS - XXL £100.00

ARIAT IDEAL 3  
REFLECTIVE VEST BLACK  
XS - XXL £100.00



LEFT TO RIGHT -

ARIAT WOMENS  
TEAM 1/2 ZIP WINE  
XS - XXL £64.99

ARIAT WOMENS  
TEAM 1/2 ZIP TEAL  
XS - XXL £64.99

ARIAT ISMAY  
1/2 ZIP SWEAT SAPPHIRE  
XS - XXL £64.99





**OUTFIT  
INSPIRATION**



**KIMMERSTON LONG  
COAT TAUPE / WINE**  
XS - L £154.98



**KELSO RIDING SKINS**  
WINE / BLACK  
24" - 34" £98.99



**KIMMERSTON SHORT  
COAT TAUPE / WINE**  
XS - XL £119.99



**LEARMOUTH LADIES  
BREECHES WINE /  
SORBET 24" - 34" £79.98**

COLDSTREAM IS AN EQUESTRIAN BRAND INSPIRED BY THE LEGENDARY SHOWJUMPER HYDROPHANE COLDSTREAM. THE COLDSTREAM RANGE, LIKE THE HORSE, REFLECTS HIGH QUALITY AND PERFORMANCE, DELIVERING INNOVATIVE, TECHNICAL, AND ON TREND PIECES.

OFFERING CONTEMPORARY AND TIMELESS RIDER APPAREL THAT IS ENGINEERED TO MAKE A DIFFERENCE FOR ANY EQUESTRIAN ATHLETE.





TOGGI WINTER DEFENDER  
PRO WATERPROOF JACKET  
SIZES 8-18 £136.50



TOGGI TECH BASE TOP  
BRUSHED BLACK  
8-18 £42.50



TOGGI EASY SWEATSHIRT  
WASHED BLACK  
8-10 £48.00



TOGGI SNUG HOODIE  
ANTHRACITE  
SIZES 8-18 £52.50



TOGGI CLOUD STORM  
FLEECE SAGE  
SIZES 8 - 18 £75.00



TOGGI SWAGMAN  
CRUSHABLE SUEDE HAT  
S - XL £63.95



TOGGI ECO SOCKS  
TEAL  
3PK £17.50



TOGGI ECO SOCKS  
PLUM  
3PK £17.50



TOGGI MONROE WAX HAT  
CHOCOLATE OR NAVY  
£44.95



TOGGI CANOPY WATERPROOF  
LONG COAT CHARCOAL  
SIZES 8 - 18 £160.00







*Countrywear*



# Ladies



MUSTO FENLAND LADIES VEST NAVY / GREEN POLARTEC 12 - 16 £90.00



CALEDONIA LADIES WAX JACKET OLIVE XS - XXL £159.00



BONNIE II LADIES COTTON SHIRT BLUE / LAVENDER 8 - 20 £29.95



BECKY II LADIES COTTON SHIRT VIOLET & CERISE / PINK & BLUE 8 - 20 £29.95



ELGIN LADIES QUILTED HERRINGBONE JACKET GREEN 8 - 18 £89.95



HOGGS ALBANY LADIES SHOOTING COAT 8 - 18 £169.94



ALAN PAINE AYLSHAM LADIES WAISTCOAT DARK NAVY 8 - 20 £79.96



HOGGS ALBA LADIES JERSEY SHIRT 8 - 16 £34.94



# Mens



MUSTO FENLAND VEST DEEP GREEN / NAVY POLARTEC  
S - XL £90.00



MUSTO FENLAND LITE JACKET DEEP GREEN  
S - 2XL £150.00



MUSTO KEEPERS JACKET RIFLE GREEN 2.0  
M - 2XL £250.00

MUSTO COUNTRY V-NECK KNIT DEEP GREEN / NAVY  
S - 3XL £90.00



KINCRAIG FIELD WAISTCOAT OLIVE GREEN  
S - 2XL £79.90



CULLODEN WATERPROOF JACKET NAVY / GREEN  
XS - 4XL £119.00



KINCRAIG WATERPROOF FIELD TROUSERS OLIVE GREEN  
S - 2XL £89.95



WOODHALL FLEECE GILET GREEN / NAVY  
XS - 2XL £34.90

SHIRTS FROM £27.95





# Childrens



AMBASSADOR JUNIOR  
TATTERSALL SHIRT  
AGES 3 - 12YRS  
£22.95



MELROSE JUNIOR  
HUNTING PULLOVER  
GREEN  
AGES 3 - 12YRS  
£29.95



WOODHALL JNR FLEECE JACKET GREEN  
YEARS 3 - 12YRS  
£27.95



WOODHALL JUNIOR FLEECE GILET  
NAVY / GREEN  
AGES 3 - 12YRS  
£24.95



STRUTHER JUNIOR  
WATERPROOF TROUSER  
DARK GREEN  
AGES 3 - 12YRS  
£39.95



STRUTHER JUNIOR  
WATERPROOF SMOCK JACKET  
GREEN  
AGES 3- 12YRS  
£59.95



STRUTHER JUNIOR  
BASEBALL CAP DARK  
GREEN  
AGES 2 -12YRS  
£12.95



CHILDS BIB N BRACE GREEN / NAVY  
AGES 3 - 13YRS  
£16.95



# Riding TO Walking



TERESA LACE PADDOCK  
BOOT CHESTNUT  
4 - 8 £77.99



ARIAT TERRAIN ZIP  
H2O BOOT BROWN  
4 - 8 £135.00



MORETTA GIANNA RIDING  
BOOT BLACK  
4 - 9 £114.98



MORETTA PIETRA  
RIDING BOOT BLACK  
4 - 9 £164.99



MORETTA DONNA  
CLOGS  
4 - 9 £39.98



MORETTA OTTAVIA  
LACE COUNTRY BOOT  
4 - 9 £61.98



ARIAT WYTHBURN  
TALL H2O DARK  
BROWN  
4 - 8 £199.99



ARIAT  
WYTHBURN H2O  
BOOT BROWN  
4 - 8 £169.99



CHATHAM PADDOCK  
BOOT BROWN  
3 - 8 £109.99



ARIAT WINDERMERE  
BOOT DARK BROWN  
4 - 8 £169.99



ARIAT HARPER H2O  
DARK BROWN  
4 - 8 £150.00



TREKSTA BUXTON BOA LOW  
SHOE BLACK  
4-11 £129.98



TREKSTA HEATHFIELD  
BOOT DARK BROWN  
9 - 12 £209.99



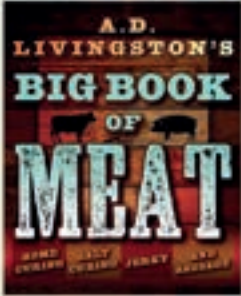
TREKSTA WINCHESTER  
8" BOA BOOT BROWN  
6 - 11 £259.98



TREKSTA WARWICK 4"  
GTX BOOT DARK BROWN  
5 - 12 £149.99



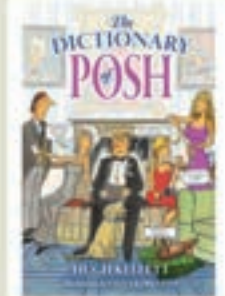
# Bookish GIFTS



A.D.LIVINGSTON'S  
BIG BOOK OF MEAT  
£16.95  
SKU 23127



DRINK! BOOK  
£12.99  
SKU 84716



THE DICTIONARY  
OF POSH BOOK  
£14.95  
SKU 84715



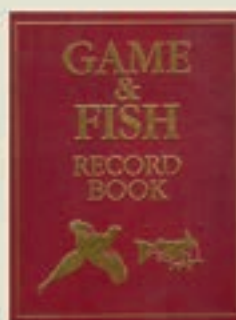
THE COCKER SPANIEL BOOK  
£16.95 SKU 84714



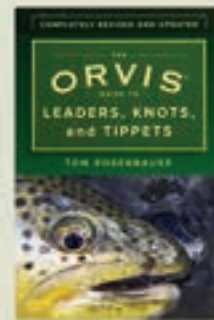
CHOOSING & KEEPING  
CHICKENS BOOK  
£12.99  
SKU 11515



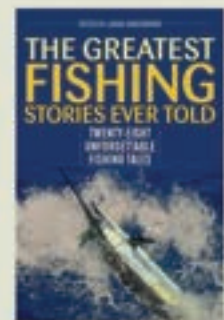
THE DEER STALKERS  
BEDSIDE BOOK  
£20.00  
SKU 33213



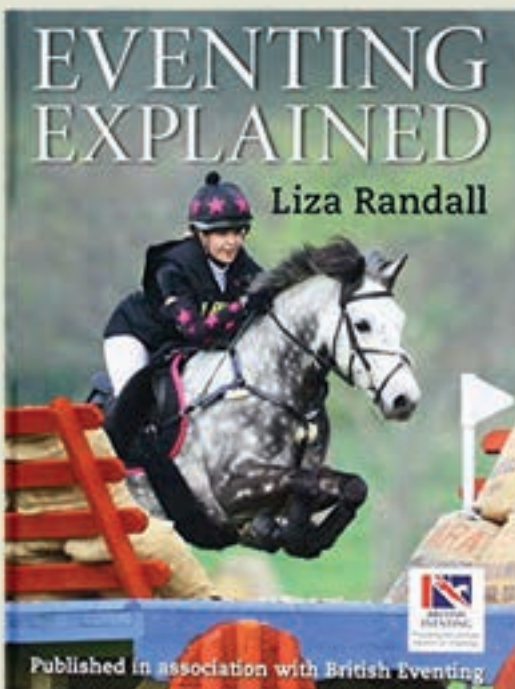
GAME & FISH  
RECORD BOOK  
£30.00  
SKU 83310



THE ORVIS GUIDE  
TO LEADERS  
KNOTS & TIPPETS  
£10.95 SKU 23133



THE GREATEST  
FISHING STORIES  
EVER TOLD  
£14.95 SKU 84717



KEEN  
COUNTRYMAN'S  
MISCELLANY  
£16.95  
SKU 74009



TOTAL RECALL  
£16.95  
SKU 22409



BOSS & CO BY  
DONALD DALLAS  
£35.00  
SKU 58427

EVENTING  
EXPLAINED BOOK  
£19.95  
SKU 28636







*late night shopping*

**@ WELLAND VALLEY FEEDS  
WEDNESDAY 8TH & WEDNESDAY 15TH  
DECEMBER 2021 4PM - 8PM**

**ON THE EVENING WE WILL BE HOLDING A  
FREE LUCKY DIP WHERE EACH HOUSEHOLD  
WILL BE IN WITH THE CHANCE TO WIN UP  
TO £100 TO SPEND IN STORE!**

**GUARANTEED PRIZE EACH TIME!**

**COME AND SEE US FOR AN EVENING OF  
FESTIVITIES INCLUDING DRINKS & NIBBLES  
ON OUR NEW SHOP FLOOR**





# Christmas FOR Cats



HOLLY & ROBIN MAGICAL  
FOREST FEATHER 2PK  
SKU:99240 £3.98



HOLLY & ROBIN  
MAGICAL FOREST  
ACORN TEASER  
SKU:99237 £6.98



MEOWEE BAUBLE FOR  
CATS SKU:39321 £2.99



HOLLY & ROBIN  
MAGICAL FOREST  
TASSLE TREE  
TEASER  
SKU:99236 £6.98

HOLLY & ROBIN  
MAGICAL FOREST  
FEATHER ROLLER  
SKU:99238 £4.28



# Christmas FOR Canines



- 1 - BOTTLE CRUNCHER REINDEER SKU:99224 £7.99
- 2 - OZZY OWL SKU:99208 £7.48
- 3 - TWINKLE TOES RACCOON SKU:99211 £8.98
- 4 - TWINKLE TOES REINDEER SKU:99212 £8.98
- 5 - WISH UPON A STAR BUNNY SKU:99218 £8.98
- 6 - WISH UPON A STAR BEAR SKU:99219 £8.98
- 7 - SNOOZY BUNNY SKU:99209 £8.98
- 8 - SNOOZY BEAR SKU:99210 £8.98
- 9 - FESTIVE LLAMA SKU:99197 £7.99
- 10 - PLAITED REINDEER SKU:99222 £12.98
- 11 - PLAITED BUNNY SKU:99221 £12.98





- 1 - ANCOL GIANT CARROT SKU:99256 £9.48
- 2 - HUG TUG SANTA 16" SKU:96507 £6.98
- 3 - SANTA SLOTH SKU:99196 £7.99
- 4 - CORDY CREW PENGUIN SKU:99192 £7.99
- 5 - CORDY CREW SANTA SKU:99190 £7.99
- 6 - CORDY CREW REINDEER SKU:99191 £7.99
- 7 - FLUFFY ROPEE SANTA SKU:99194 £7.99
- 8 - FLUFFY ROPEE PENGUIN SKI:99195 £7.99
- 9 - FLUFFY ROPEE REINDEER SKU:99193 £7.99
- 10 - CHRISTMAS VEGGIE ROPE SKU:99178 £6.99
- 11 - BAD MANNER BRUSSELS SKU:99168 £10.99
- 12 - ANCOL CHRISTMAS PUDDING SKU:99252 £7.48
- 13 - GLORIA GOBBLER SKU:99181 £13.99
- 14 - GOLDEN ANTLER HEADBAND FROM £5.99
- 15 - CHRISTMAS TREE HEADBAND FROM £5.99
- 16 - SANTA'S SCARF SKU:99230 £5.97
- 17 - ELF OUTFIT FROM £13.99





# EQUINE TREATS!



STUD MUFFIN CHRISTMAS  
PUDDING PACK OF 15  
SKU:84308 £3.98



NAF MINTY, HEDGY & APPY  
TREATS £3.99 EACH



SILVERMOOR  
SWINGERS 1KG  
SKU:58622 £3.95



LINCOLN  
HORSE BIX  
SKU:76116  
£1.25



GLOBAL HERBS CHRISTMAS  
PUDDING 3KG  
SKU:84307 £11.95



LITTLE UNICORN  
TREATZ 100G  
SKU:23161 £1.49



EQUIMINS TASTY  
TREATS 1KG  
SKU:39344 £4.49



LINCOLN  
VEGI-BITES 1KG  
SKU:28333 £4.99





**STILL  
STUCK  
FOR  
IDEAS?**

WE'VE GOT YOU COVERED



**WELLAND VALLEY FEEDS**

***GIFT VOUCHERS***

**AVAILABLE TO PURCHASE IN  
STORE**

**£5 £10 £20 £50**







# ADVERTS

## HORSE/PONY FOR LOAN/SALE

12.2 Chestnut Gelding – For loan or loan WVTB, based in LE16 Hallaton. Age 11, lovely pony, forward going but safe. Good for showjumping/pony club etc. Excellent to load, clip, teeth etc. Contact Pam on 07973 564199 for pictures/videos/viewing.

Pablo's Horse Sanctuary Reg. Charity No. 1116394.  
www.pabloshorsesanctuary.co.uk Based at Long Clawson, Leics.  
Are you able to help, either through donations, fundraising or to give your time at the stables? Currently have horses, ponies, goats, pigs, chickens and sheep. Re Horse welfare issues contact Carole Fielding on 07745 628684 or Andrea Leavis 07786 764453.

## HORSE/PONY WANTED

Looking for a companion horse or pony to loan for my 15.1 hands, 25 year old TB cross mare. Must be kind and gentle. Please call Emma on 07711608536.

WANTED – uncomplicated (preferably retired) companion for lonely 13:2 gelding. Will be well cared for. Lovely paddocks and shelter. Loan or buy. Laxton NN17 3AX. 07710 259508.

## EQUESTRIAN SERVICES

CALM AND COLLECTED - Registered, Qualified & Insured. Equine Behaviour Consultant. Training in a language your horse understands. Kay Willoughby 07734 927932

Jane Boulton Rug Wash and Repair All rugs and dog beds washed and repaired. Heavy duty mending. Rugs can be dropped off at Welland Valley Feeds (must be in a bag and labelled with contact information and requirements i.e., wash/repair) Tel: 07866 889280

Susie's Rugwash All types of horse rugs washed, reproofed and repaired. Plus dog beds, duvets etc,etc. Fast efficient service. Collection available for 10+ rugs. Drop off any time at: Dale Farm, 20 Church Street, Wilbarston LE16 8QG or if more convenience. The Meadows Livery Yard, Kilby Road, Fleckney. Any queries please ring Susie Bowie 07880 715574 www.susiesrugwash.co.uk.

## EQUESTRIAN MISC

Metal Hay Net Fillers Steel construction, with 7 hanging hooks and top ring above them for hand protection when filling the net. Can be free standing or wall fixed. Overall sizes: 1m high x 0.5m wide Powder Coated Black. Made locally. £40 each. Collection from Desborough, free delivery within a 5 mile radius. Contact number: 07426063378

## LIVERIES, GRAZING, LAND & PROPERTY

Diy Livery – Available £35.00 per week. 12x12ft stables, all under cover. 20x40 all weather arena, Individual turnout, excellent hacking, hay and starw included. Based in Desborough. Call Richard 07856 663683.

Assisted, part & full livery beautiful 20 x 50 all weather school, all year turnout, quality hay & haylage on site. Great hacking. Old/Walgrave WhatsApp 07482 246023

WELFORD TURN 5\* FULL LIVERY - Stables with Equimat and shavings, horse walker, solarium, hot wash down floodlit menage, rug dryer, excellent hacking on the doorstep, staff on site 24/7 07734 927932

DIY or Part Livery available in Stoke Albany. 12 x12 stables, individual turnout, floodlit ménage and use of horse walker. Plenty of off road hacking. For further information please call 07970881737.

## HAY & STRAW

Marston Hay – Probably the best hay money can buy. Sweet soft meadow hay from our weed free fields. Small bales and round bales. Small bales of straw and round bales. Telephone 07850 942094.

BROOKLANDS FARM Small bale Hay, Best quality £4 per bale, 20 bales and over Delivered Free. Call Ceri on 0116 2597374 Billesdon.

## LOST & FOUND

Dog Lost is a free service run by volunteers. www.doglost.co.uk Reuniting dogs with their owners. Tel: 0844 800 3220

Please notify Welland Valley Feeds if you find your pet - Thank you.

## DOGS, PUPPIES & STUD DOGS

Mini Dachshund Puppy, Boy 8 weeks old on 23rd December. Dapple biscuit colour, will be vet checked, vaccinated and microchipped. Both parents can be seen, £1150.00. Tel: 07771639871.

Cocker Spaniel Puppies. 1 Girls Blue Road, 1 Girl Chocolate Roan, 1 Boy Black and White. 8 weeks old, will have vaccination and microchipped. Mum and dad can be seen £900.00. Call Benjamin 07768900702.

KC registered pups for sale , both parents can be seen , blacks , fox reds Ready first week of December Microchipped, Vaccinated , Health checked. Tel 07729471022.

LURCHER PUPPIES FOR SALE -Bedlington whippet greyhounds 5 weeks old. Ready to leave in 3 weeks. Smooth haired, Blues and blue & white, 1 bitch, 5 dogs. £600 each. Contact Steve 07855135626

KC Registered Pup for sale. Both parents can be seen, blacks, fox reds. Ready 1st week of December. Vaccinated, microchipped, health checked and wormed. Please call for more info. Bridget – 07729 471022

Cocker Spaniel puppy, Brown & Tan, KC registered, 60%/40% Worker/Show which is an ideal combination, fully screened for hereditary conditions, 5 generation pedigree cert., vet checked, microchipped, vaccinated and wormed. Ready end Nov (9 weeks). £1500. Contact Chris 07775 754 751. For obvious reasons, we will visit you first.



## LEICESTER ANIMAL RESCUE

Leicester Animal Rescue have many dogs and cats seeking kind, permanent homes. All are microchipped and up to date with flea and worm treatment, and adults are neutered. Please note we only re-home within the Leicestershire area. Please telephone to book a viewing appointment 0116 259 9399.

## POULTRY

Speckled Sussex cockerels & Cuckoo - Marans cockerels available, both pure breeds, producing lovely chicks. Guinea fowl of mixed gender available -flock of 5 available. Call for price-07515886629.

## SITUATIONS VACANT

Part-time egg work at a free-range egg farm in Great Bowden. Must be fit and strong and not frightened of birds! Hours 9am to 2pm. Training provided. £10-12/hr. 01858 545289.

PART TIME GROOM/YARD ASSISTANT WELFORD - Monday to Friday minimum 10am to 2pm with possibility for more hours. Must be confident handling youngstock and fit competition horses, reliable and punctual. Tel 07734 927932

## VEHICLES & TRAILERS

Horse Box For Sale - 4 horse, 4 months MOT. Good condition, new floor and ramp £3500.00. Northamptonshire. Tel: 07802 545380.

Steph Britain Equine Transport- A Leicestershire based friendly and professional transportation service. Safe and well maintained 3.5tonne vehicle with driver for shows/ yard moves/ sales and more. Call 07858507327.

Mercedes 814 Solitaire Horsebox. Carries 3 horses. Full live in. Sleeps 4. Includes gas hob and grill. 3 way fridge. Hook up facility. Sink with running water. Ample storage. Tack room / cloak room. New ramp springs and turbo fitted this year. Full brake overhaul and exhaust last year. MOT until 31/08/2022. Price: £8,500.00 Call 07970 554505 for details.

Don't  
Forget

WE ARE OPEN FOR LATE  
NIGHT SHOPPING ON THE  
8TH & 15TH DECEMBER FROM  
4PM TO 8PM

COME & SEE US FOR DRINKS  
& NIBBLES & TO EXPLORE  
OUR NEW CLOTHING &  
FOOTWEAR AREA

PLEASE NOTE THAT THE WAREHOUSE  
WILL BE CLOSED FROM 5:30 PM



WANT TO PLACE AN AD?

COME & SEE US IN STORE  
OR VISIT OUR WEBSITE

[WWW.WELLANDVALLEYFEEDS.CO.UK](http://WWW.WELLANDVALLEYFEEDS.CO.UK)





# WELLAND VALLEY FEEDS

## *Wishlist*

WANT TO MAKE SURE YOU GET THE GIFTS YOU LOVE THIS CHRISTMAS?

Make life easier for your loved ones and take advantage of our new in store Wishlist service.

Leave us your name and wishlist in store and when your family & friends come in store, we will guide them to your chosen gift selection.

Please note that products will be subject to availability on the date of purchase.

### *Holiday period opening hours*

MONDAY 20TH - THURSDAY 23RD 8AM - 5:30 PM

FRIDAY 24TH - 8AM - 3PM  
SATURDAY 25TH - CLOSED  
SUNDAY 26TH - CLOSED  
MONDAY 27TH - CLOSED  
TUESDAY 28TH - 10AM - 4PM

WEDNESDAY 29TH -  
THURSDAY 30TH 8AM - 5:30PM

FRIDAY 31ST - 8AM - 3PM  
SATURDAY 1ST JAN - CLOSED  
SUNDAY 2ND JAN - 10AM - 4PM  
MONDAY 3RD JAN - 10AM - 4PM  
TUESDAY 4TH ONWARDS - NORMAL HOURS