



All your network & security under one umbrella including support of VLAN, VPN and firewall

Introducing the highly anticipated addition to our networking line: the PR60X 10G/Multi-Gigabit Dual-WAN Pro Router with Insight Remote Cloud Management. Easily connect and manage internet traffic between wired devices within a secure network to support business operations. This cutting-edge router is designed to meet the needs of

businesses and professional users who require lightning-fast speeds and exceptional connectivity with remote management capabilities. The Dual-WAN functionality includes failover protection, ensuring uninterrupted internet connectivity for critical applications and services. The sleek, updated form factor of the router is designed for mounting with the ports in

the rear, but can be installed reversed with the included, rack ears. As an Insight Remote Managed product, configuration and management is simple, stress-free, and available 24/7 from any location.



Highlights

Intelligent Router

Providing all the routing and network segmentation features that a router must have, the NETGEAR 10G/Multi-Gigabit Dual-WAN Pro Router with Insight Cloud Management will be the backbone of any modern small business.

10G/Multi-Gigabit LAN/WAN ports keep your data moving at top speed. IPSec Site-to-Site VPN allows interconnection between two networks for headquarter and brand office. With Network Address Translation (NAT) routing, all the users in your office can access your broadband connection at the same time.

Leverage up to 8 VLANs to separate the network into smaller groups for more secure and efficient use of network resources. Simplify network administration with up to 8 DHCP server assigning IP addresses automatically.

Remote Management

The NETGEAR Insight Remote Management platform offers visibility and access to the routing features from a single pane of glass. Register, configure, manage and monitor your router with just a few taps from your Insight mobile App or web portal.

Business Grade

The quietly operating 19-inch rack-mountable metal unit is backed by the industry's best-in-class 3-year hardware warranty.

Simply activate NETGEAR Insight Cloud management to manage your network. Anytime. Anywhere.

By activating the NETGEAR Insight Cloud management, the users will enable fundamental management features allowing businesses simpler configuration and deployment from anywhere using the NETGEAR Insight app from mobile devices or the Insight Cloud portal from any device with a web browser.

Unique advanced management features of these Insight managed devices include:

- Remote monitoring and management with performance dashboards and troubleshooting features including remote reboot, port and PoE advanced configuration including remote enable/disable/power-cycle, PoE scheduling, and firmware updates with auto-schedule mode
- Single pane-of-glass multi-device, multi-network, and multi-site remote monitoring and notifications with the NETGEAR Insight app
- Full-fledged local or remote access for configuration, management, and monitoring on a larger display using your tablet, laptop, or desktop computer through the NETGEAR Insight Cloud portal
- Configurable in-app and email alerts and notifications
- Auto-join and configure (zero-touch provisioning) for additional Insight managed devices added to the network
- Centralized network configuration (policies) across Insight managed switches, and access points for VLANs, ACLs, QoS, LAGs, etc.
- Cloud-based network administration, monitoring, and firmware management

For more information about NETGEAR Insight-manageable device settings, please see at:

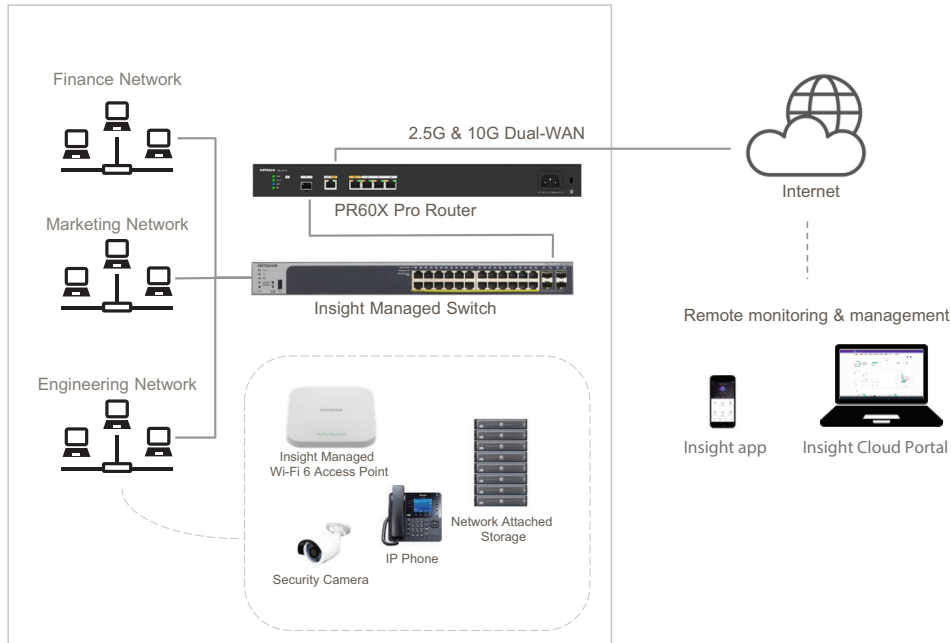
<https://www.netgear.com/support/product/Insight.aspx>

Features and Benefits

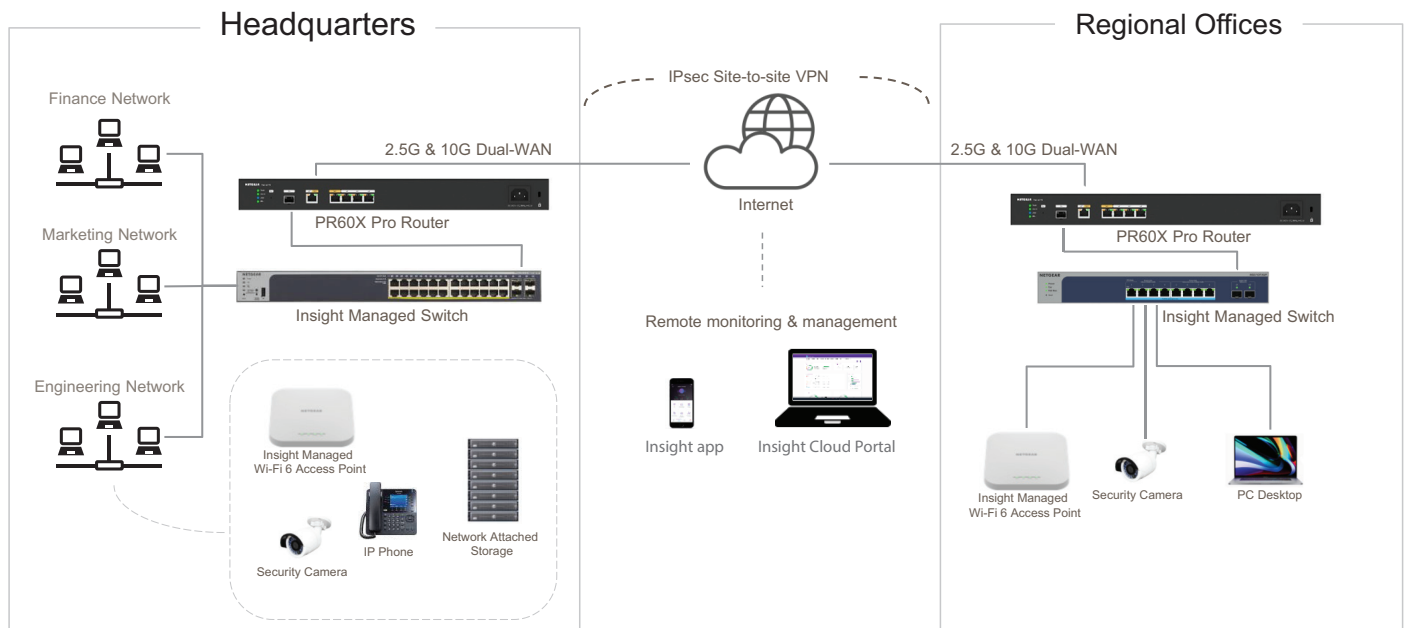
High performance hardware	10G/Multi-Gigabit throughput and 1x2.5G WAN, 1x10G/Multi-Gigabit WAN/LAN configurable port, 3x2.5G LAN and 1x10G SFP+ LAN.
WAN-to-LAN Throughput	When using WAN2 port - 10Gbps max WAN with 17.5Gbps max LAN When using WAN1 port only - 2.5Gbps max WAN with 27.5Gbps max LAN
Primary and secondary internet connections	Dual-WAN ports for failover accommodating two internet connections to maintain a reliable link. The first connection functions as the primary and the other as a backup.
Leverage up to 8 VLANs	Separate the network into smaller groups for more secure and efficient use of network resources.
Supports up to 8 DHCP servers	Allows for automatic assignment of IP addresses, simplifying network administration.
Firewall protection against malicious incoming traffic	Prevents unauthorized access to the network and monitors the communications between the network and the outside world.
NETGEAR Insight Remote/Cloud Management	Instant discovery, configuration, and management of your network and Pro Router. Free 1-year subscription included.
Versatile rackmount design	Reverse mounting rack ears included for front-facing or rear-facing ports as desired for a clean or traditional look.
IPSec Site-to-Site VPN	Provides up to 30 VPN tunnels for businesses to connect remote workers, branch offices, and partners to the main corporate network.

Target Applications

Small Office - IT Business PR60X



Headquarters - Regional Offices - IT Business PR60X



Technical Specifications

FEATURES	PR60X
Connectivity	
Gigabit Ports WAN/LAN	1 x 10G/Multi-Gigabit Copper (Configurable LAN/WAN) 1 x 2.5G/1G RJ-45 (WAN) 3 x 2.5G/1G RJ-45 (LAN) 1 x 10G/1G SFP+ (LAN)
DMZ Interfaces (Configurable)	Yes
Performance	
LAN-to-WAN Throughput	For 2.5G WAN port, LAN-to-WAN throughput is 2.4Gbps For 10G WAN port, LAN-to-WAN throughput is 9.4Gbps
Maximum Number of VLANs	8
Security	
Firewall Functions	Firewall Traffic Rules/Scheduling, Port Forwarding, Port Triggering, Stateful Packet Inspection (SPI), Port/Service Blocking, Denial-of-service (DoS) Prevention, Stealth Mode, Block TCP Flood, Block UDP Flood, Respond To Ping on Internet Port
VoIP SIP ALG	Yes
Networking	
ISP Address Assignment	DHCP, Static IP Assignment, PPPoE
NAT Modes	NAT
Routing	Static, Dynamic, RIPv1, RIPv2
DHCP Server	8
VLANs (Up to 8)	802.1Q
Essential Networking Features	MAC Address Cloning/spoofing, NTP Support, UPnP, Auto Uplink on Switch Ports
VPN	
IPsec Encryption/Authentication	3DES, AES (128, 192, 256 bit)/SHA-1, SHA-2 (256 bit), MD5
Key Exchange	IKEv1, IKEv2, Pre-shared Key
Access Modes	Remote access via Insight Remote Cloud Management
Management	
Management Options	Insight Remote Cloud Management
Logging	Accepted Packets, Dropped Packets Statistics, System, Source MAC filter, Session Limit, Bandwidth Limit, IPsec VPN

Technical Specifications

Management	
Log Delivery	Insight logging
Troubleshoot	Diagnostics Ping, DNS Lookup, Trace Route, Speed test
Maintenance	Save/Restore Configuration, Restore to Factory Defaults, Firmware Upgrades, Display and Monitor Statistics
Hardware	
Processor	Quad Core ARM A73 @ 2.2 GHz Packet Process Engine (PPE) processors
Flash Memory/RAM	2GB DDR4/4GB eMMC
Major Regulatory Compliance	Environment: RoHS Safety: CE/LVD, CSA EMI: FCC Part 15 Class B, CE mark
Temperatures	Operating Temperature: 0° - 40°C (32°-104° F) Storage Temperature: -20° - 70° C (-4° - 158° F)
Humidity	Operating humidity 90% maximum relative humidity, non-condensing Storage humidity 95% maximum relative humidity, non-condensing
Electrical Specifications	AC Input: 100-240V, 50/60Hz, 1.3A
Dimensions (W x D x H)	17.3 x 3.9 x 1.7in (440 x 100 x 43.2mm)
Weight	3.34lb (1.513kg)
System Requirements	Cable or DSL Broadband Modem, Internet Service, Windows Client Device, Internet Explorer/Firefox/Chrome/Safari Web Browser
Warranty and Support	
Hardware Warranty*	3-year
Insight Remote Cloud Management	1-year Insight subscription included

Technical Specifications

Package Contents

PR60X	<p>NETGEAR PR60X 10G/Multi-Gigabit Dual-WAN Pro Router with Insight Cloud Management</p> <ul style="list-style-type: none"> Rack-mount kit Rubber feet (for Desktop deployment) Power cord(s) (varies by region) Ethernet cable Installation guide
-------	---

Ordering Information

North America PR60X-100NAS

Europe PR60X-100EUS

Asia Pacific
 PR60X-100UKS (Hong Kong and Singapore)
 PR60X-100AUS (Australia and New Zealand)
 PR60X-100JPS (Japan)
 PR60X-100KOS (South Korea)

*This product comes with a limited warranty that is valid only if purchased from a NETGEAR authorized reseller, and covers unmodified hardware, fans and internal power supplies - not software or external power supplies, and requires product registration at <https://www.netgear.com/business/registration> within 90 days of purchase; see <https://www.netgear.com/about/warranty> for details. Intended for indoor use only.

**The NETGEAR OnCall 24x7 contract provides unlimited phone, chat and email technical support for your networking product.

NETGEAR, the NETGEAR Logo, and NETGEAR Insight are trademarks of NETGEAR, Inc. in the United States and/or other countries. Other brand names mentioned herein are for identification purposes only and may be trademarks of their respective holder(s).

NETGEAR, Inc. 350 E. Plumeria Drive, San Jose, CA 95134-1911 USA, 1-888-NETGEAR (638-4327), E-mail: info@NETGEAR.com, www.NETGEAR.com

DS-PR60X-1Aug23