

lilitab P Basic Head Unit

for iPad Pro 12.9"

Assembly Instructions

v1.0



TABLE OF CONTENTS

Packing List.....	2
Assembly Instructions.....	3
Cleaning Instructions.....	4

PACKING LIST



1 x head unit & faceplate



1 x Silver L Key



2 x M3x7mm Head Mount
Security Screws

GOT QUESTIONS? WE'RE HERE TO HELP!

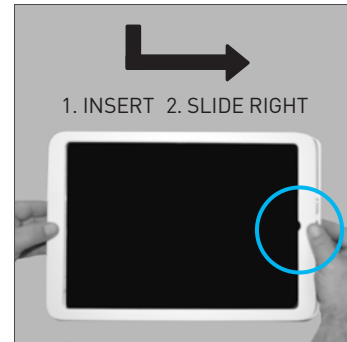
EMAIL support@lilitab.com **PHONE** 888.705.0190

ASSEMBLY INSTRUCTIONS



1. Remove faceplate:

On the back of the head unit, pinch together the faceplate release clips.

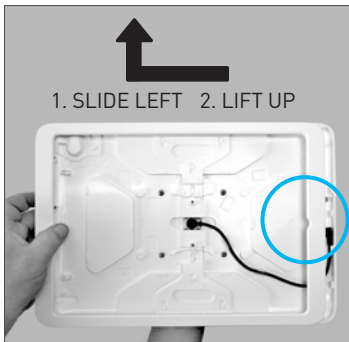


4. Install faceplate:

Slide the faceplate onto the head unit in the same fashion you removed it, towards the home button.

NOTE: The faceplate only fits in one direction—therefore if it doesn't slide easily, please reverse the direction—do not force it.

Simply reverse these steps to remove your tablet.



2. While still pinching the clips, flip the head unit over and slide the faceplate away from the home button and lift up to remove the faceplate.

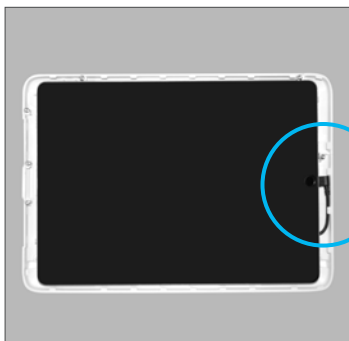


5. Install optional security screws:

Flip the head unit over and install the **2 security screws** with the **silver L key** provided.



NOTE: When the head unit is attached to the mount, the faceplate cannot be removed. However, the optional security screws prevent faceplate removal when not on the mount.



3. Insert your tablet:

Lay the head unit face up and insert your tablet carefully and connect the charge cable securely.

NOTE: Before inserting your tablet, ensure the charge port is on the same side as the charge cable.

Refer to your lilitab Mount owner's manual for instructions on attaching the head unit.

CLEANING INSTRUCTIONS



Cleaning kit available on our website in the accessories section.

1. **Spray the Brillianize** onto one of the cloths provided.

WARNING: Other cloth/material may scratch the surface of your lilitab



2. DO NOT spray directly onto your lilitab!



3. **Rub gently** in a circular motion to remove fingerprints and dirt.

WARNING: Applying excess pressure can scratch the surface of your lilitab.