

K Head for Samsung Tab A 9.7" & S2 9.7" Faceplate

Please submit:

- PDF file with layers preserved
- All type converted to outlines
- All images embedded at 150 DPI
- This file visible on top layer

For accurate color matching, use the Pantone Color System.

Submit via the Branding Element Submission Form located on the **Faceplate Graphic page**.

IN PORTRAIT ORIENTATION, THIS IS THE TOP

Camera Area

If your faceplate has the camera exposed, this area will be cut out.

Cut Lines

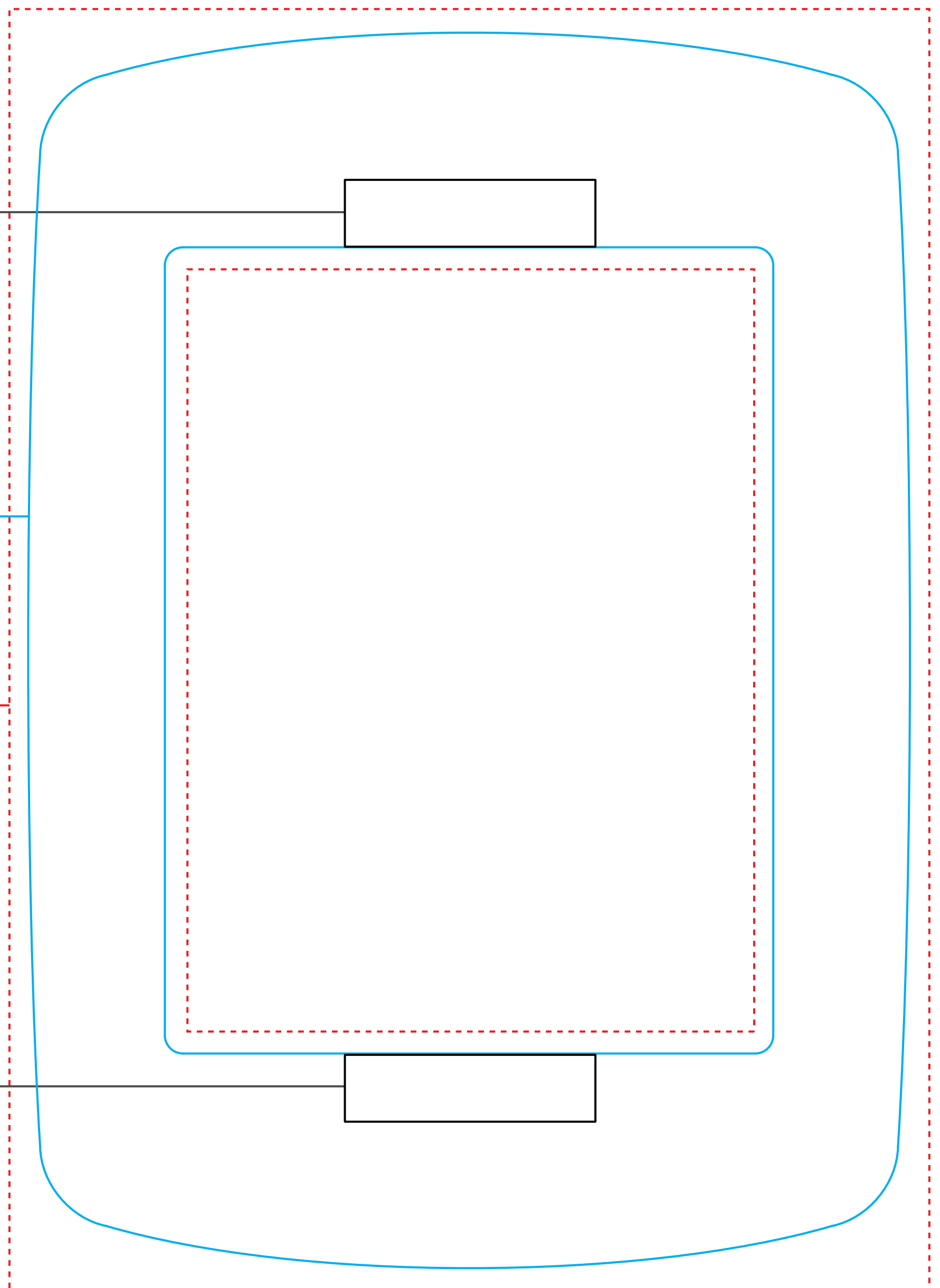
This is where your artwork will be trimmed.
(Finished size: 12-1/8" x 8-5/8")

Bleed

Artwork that reaches the cutline must extend to the outside edge of the red lines.

Home Button Area

If your faceplate has the home button exposed, this area will be cut out.



1:1 SCALE