

Lilitab H Basic Head Unit

Assembly Instructions

v3.0



TABLE OF CONTENTS

Packing List.....	2
Assembly Instructions.....	3
Cleaning Instructions.....	4



← Scan to watch
video on our
YouTube Channel!

GOT QUESTIONS? WE'RE HERE TO HELP!

EMAIL support@lilitab.com **PHONE** 888.705.0190

PACKING LIST



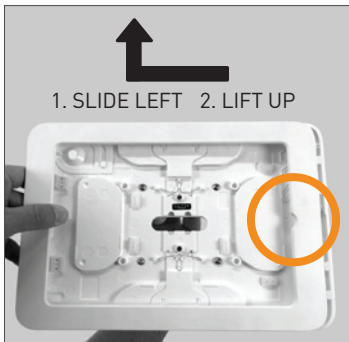
1 x Head Unit and Faceplate

ASSEMBLY INSTRUCTIONS



1. Remove faceplate:

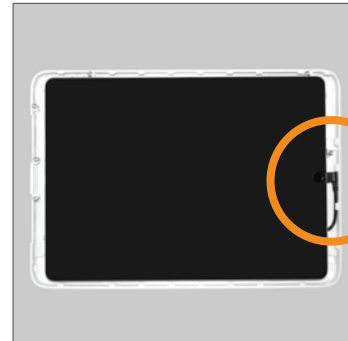
1. On the back of the Head Unit, pinch together the faceplate release clips.



2. While still pinching the clips, flip the Head Unit over and slide the faceplate left, away from the home button, and lift up to remove the faceplate.

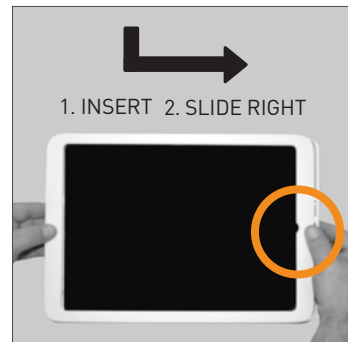


2. Thread the charge cable from the top of the mount pole through the opening located in the center of the Head Unit and pull through to the front side.



3. Insert your tablet. Lay the Head Unit face up and connect the charge cable.

NOTE: Before inserting your tablet, ensure the charge port is on the same side as the charge cable.



5. Install faceplate by sliding the faceplate onto the Head Unit in the same fashion you removed it, but slide right, towards the home button.

NOTE: The faceplate only fits in one direction—therefore if it doesn't slide easily, please reverse the direction—do not force it.

Simply reverse these steps to remove your tablet.

Refer to your Lilitab Mount owner's manual for instructions on attaching the Head Unit.

CLEANING INSTRUCTIONS



Cleaning kit available on our website in the accessories section.

1. **Spray the Brilliantize** onto one of the cloths provided.

WARNING: Other cloth/material may scratch the surface of your Lilitab.



2. DO NOT spray directly onto your Lilitab!



3. **Rub gently** in a circular motion to remove fingerprints and dirt.

WARNING: Applying excess pressure can scratch the surface of your Lilitab.