

# lilitab H Basic Head Unit

Assembly Instructions

v2.0



## TABLE OF CONTENTS

Packing List . . . . .	2
Assembly Instructions . . . . .	3
Cleaning Instructions . . . . .	4

## PACKING LIST



1 x head unit & faceplate

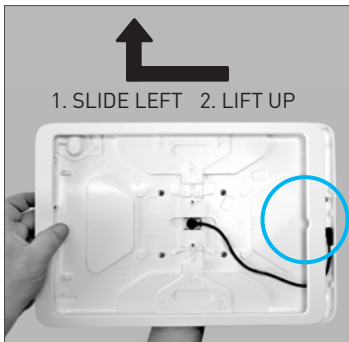
**GOT QUESTIONS? WE'RE HERE TO HELP!**

**EMAIL** [support@lilitab.com](mailto:support@lilitab.com) **PHONE** 888.705.0190

# ASSEMBLY INSTRUCTIONS



- 1. Remove faceplate:**  
On the back of the head unit, pinch together the faceplate release clips.



- 2.** While still pinching the clips, flip the head unit over and slide the faceplate away from the home button and lift up to remove the faceplate.

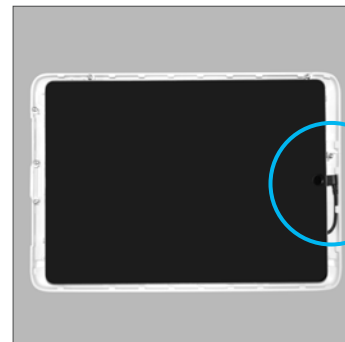


- 3. Thread the charge and sync cable** from the top of the pole through the metal plate located in the center of the lilitab head unit and pull through to the front side.



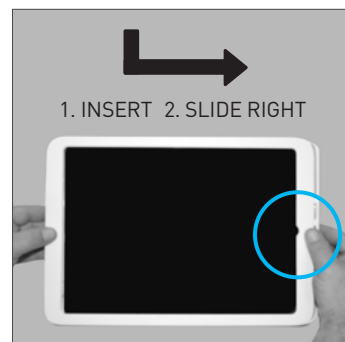
- 4. Attach your lilitab head unit** to the top of pole with the four (4) head mount security screws and silver L key that came with your mount.

**NOTE:** Rotating the neck security cover 90° will make access to the screw openings easier to access.



- 5. Insert your tablet:**  
Lay the head unit face up and insert your tablet carefully and connect the charge cable securely.

**NOTE:** Before inserting your tablet, ensure the charge port is on the same side as the charge cable.



- 6. Install faceplate:**  
Slide the faceplate onto the head unit in the same fashion you removed it, towards the home button.

**NOTE:** The faceplate only fits in one direction—therefore if it doesn't slide easily, please reverse the direction—do not force it.

Simply reverse these steps to remove your tablet.

## CLEANING INSTRUCTIONS



Cleaning kit available on our website in the accessories section.

1. **Spray the Brilliantize** onto one of the cloths provided.

**WARNING:** Other cloth/material may scratch the surface of your lilitab



2. DO NOT spray directly onto your lilitab!



3. **Rub gently** in a circular motion to remove fingerprints and dirt.

**WARNING:** Applying excess pressure can scratch the surface of your lilitab.