



Printer Mount

Assembly Instructions

v1.0

TABLE OF CONTENTS

Assembly Instructions 3

FOR BASE PLATE INSTALLATION, YOU'LL NEED:

- ✓ Phillips screwdriver

FOR BOLT DOWN INSTALLATION, YOU'LL NEED:

- ✓ Powered drill/driver, preferably with impact action
- ✓ Socket wrench with a neck of at least 5", this may require a socket extension
- ✓ 2 x bolts, wood screws or other fastener suitable for your floor's substrate (m6, no.14 or 1/4" diameter)

TO SECURE YOUR LILITAB YOU WILL NEED:

- ✓ Kensington compatible cable lock



← Scan to watch assembly video!

GOT QUESTIONS? WE'RE HERE TO HELP!

EMAIL support@lilitab.com PHONE 888.705.0190

PACKING LIST



1x Printer Mount Plate



1 x Printer Mount Bracket



4 x M3x6mm



4 x M4x8mm



1 x Silver L Key

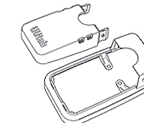


1 x Black L Key

INCLUDED IF YOU ORDERED FLOOR BASE



1 x Floor Base



1 x Base Housing



2 x M6x12mm Base Screws (short)

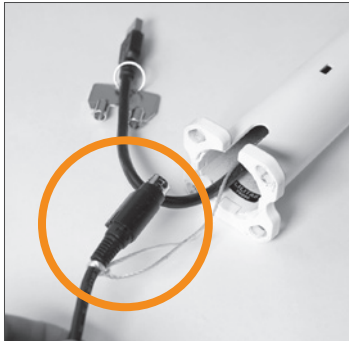


2 x M6x14mm Base Screws (long)



2 x M3x6mm Base Security Screws

ASSEMBLY INSTRUCTIONS



- 1. Thread the printer's power cable** up from the bottom of the Floor post by using the string provided. Tie the string to the end of the power cable and pull up towards the opening in the middle of the post (see figure 2 below).



Figure 2. Pull the printer's power cable through the opening located in the middle of the post.



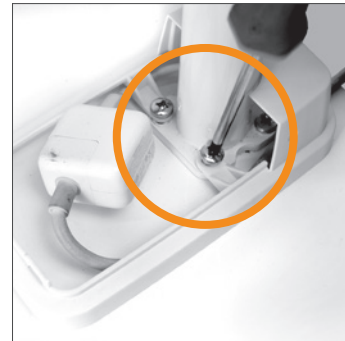
- 2. Thread the charge cable and the printer's power cable** exiting the bottom of the Floor post into the base housing on an angle to clear the welded flange, as pictured.



- 3. Attach Floor Base.** Line up the flange of the mount post with the four screw holes. Using the **two (2) M6x12mm short base screws**, secure through the two rear-most openings closest to the cable egress slot.



NOTE: You will need to hold the base housing up and out of your way while bolting. If not using the floor base, attach to floor surface using template on page 6, and thread the cable through your substrate.



(iPad AC adapter shown with optional apple power extension cord. Your AC adapter will vary depending upon your tablet type.)

- 4. Connect and position cables:**
 1. Connect the charge cable to the tablet's AC adapter. Then connect the adapter to your extension cord.
 2. Position both cables underneath the base housing's two plastic tabs. The extension cord should exit the rear of the housing, and the printer's power cable should exit the second hole at the rear of the housing (see figure 3 below).
 3. Screw down the base housing using the **two (2) M6x14mm long base screws**.

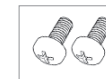
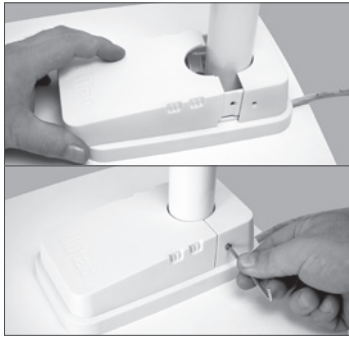
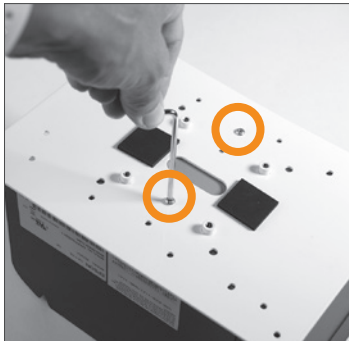


Figure 3. Charge cable and printer power cable exiting the rear of the Base Housing.

ASSEMBLY INSTRUCTIONS



- 5. Attach the base housing cover** by sliding it into place. Secure it using the **two (2) M3x6mm base security screws** and **silver L key**.

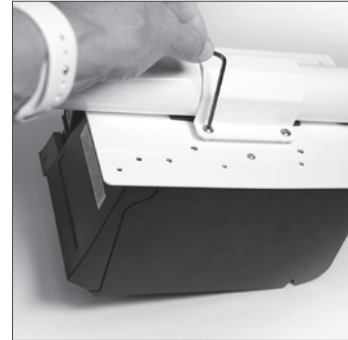


- 6. Attach the Printer Mount Plate** to the rear of your printer, lining up the appropriate openings using the **M3x6mm screws** and **silver L key**. See page 5 for hole identification by printer makes/models. Make sure the bumper pads are facing away from your printer. Once fastened, they will compress against the mount post ensuring your printer doesn't slide down the post.



- 7. Connect the power cable to your printer.**

NOTE: Your printer may look different or be a different model than shown.

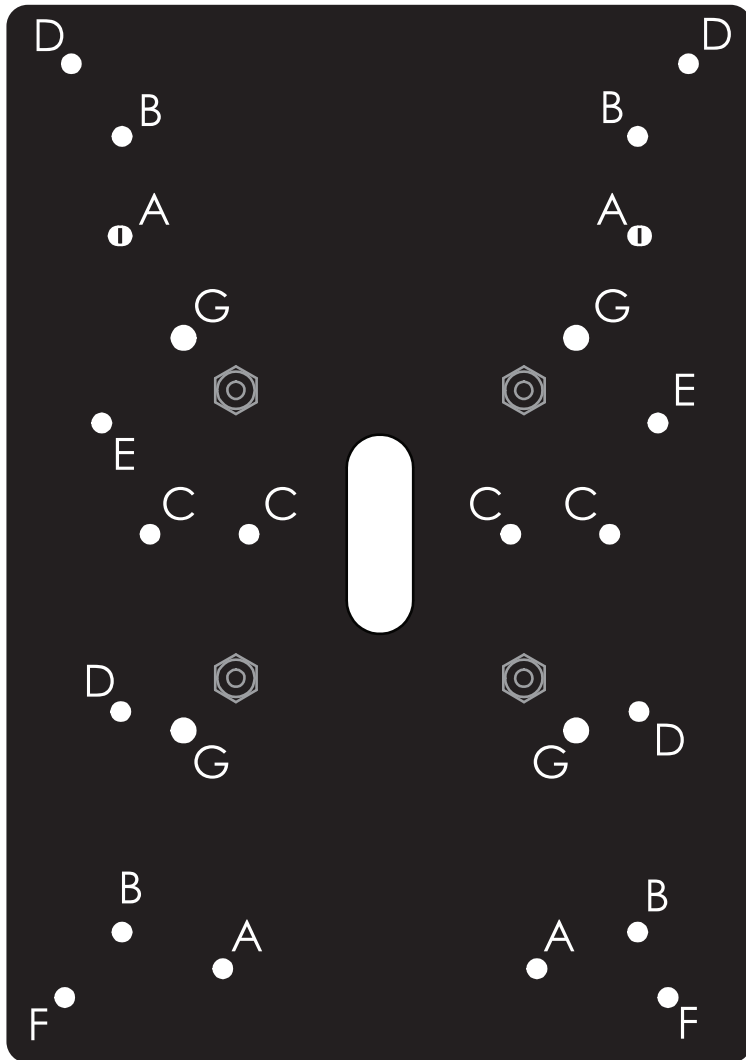


- 8. Attach Printer Mount Plate and Bracket.** Sandwich the Printer Mount Plate and Bracket around the Floor post with the printer facing out and fasten using the **four (4) M4x8mm screws** and **black L key**.



Refer to your Lilitab Head Unit owner's manual for tablet installation instructions.

PRINTER MOUNT PLATE TEMPLATE



HOLE PATTERN	ID
Brother QL-820NWB	A
Epson TM-L90	B
Epson T70ii	C
Epson T88-Vi	D
Epson WH-10	E
STAR TSP 100/650	F
VESA-75	G