

Lilitab Telemedicine Tablet Cart

Assembly Instructions

v2.0

TABLE OF CONTENTS

Assembly Preparation and Packing List	3
Assembly Instructions	4
Cleaning Instructions	7



← Scan to watch
assembly videos on
our YouTube Channel!

GOT QUESTIONS? WE'RE HERE TO HELP!

EMAIL support@lilitab.com **PHONE** 888.705.0190

ASSEMBLY PREPARATION

FOR INSTALLATION, YOU'LL NEED:

- ✓ Phillips screwdriver

PACKING LIST



1 x Floor Pro Mount Post



2 x MagDOCK Keys



1 x Base Housing



2 x M6x12mm Base Screws (short)



2 x M6x14mm Base Screws (long)



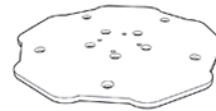
2 x M3x6mm Base Security Screws



1 x Head Unit and Faceplate



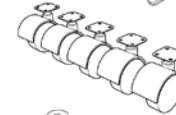
1 x Silver L Key



1 x Wheeled Base Center Plate



5 x Wheeled Base Arms



5 x Wheeled Base Casters



10 x M6x12mm Arm Screws

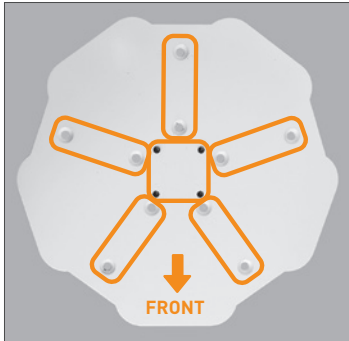


20 x M4x8mm Caster Screws



1 x Cord Wrap

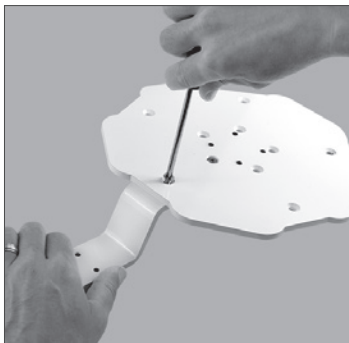
ASSEMBLY INSTRUCTIONS



1. Assemble Wheeled Base. Locate the front of the Wheeled Base Center Plate and the five (5) grooved screw hole pairs to accept the five (5) arms.



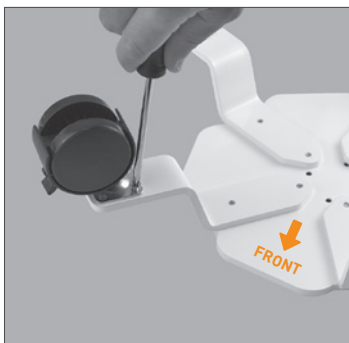
4. Prepare Floor Mount Post. Remove the base housing cover and insert the mount post at an angle into the base housing, clearing the flange.



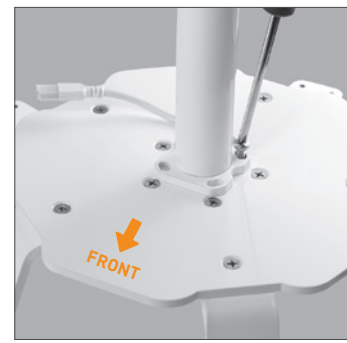
2. Attach Arms. Using the **10 M6x12mm screws**, secure the **five (5) arms** to each screw hole pair as circled in Step 1.



5. You can rest the base housing on top of the MagDOCK while you continue assembly.



3. Attach Casters. Flip the Center Plate over. Using the **20 M6x8mm screws**, secure the **five (5) casters** to each arm (each caster takes four (4) screws). **Two of the casters have a sidebrake.** Install them next to each other towards the front of the center plate.



6. Attach Floor Mount Post to Wheeled Base. Line up the bottom of the mount pole with the four (4) screw holes in the Center Plate, positioning the rear cable away from the front. Using **two (2) M6x12mm short base screws**, secure through the two rear-most openings. Then slide the base housing down.



ASSEMBLY INSTRUCTIONS



(iPad AC adapter shown with optional apple power extension cord. Your AC adapter will vary depending upon your tablet type.)

7. Connect and Position Cables:

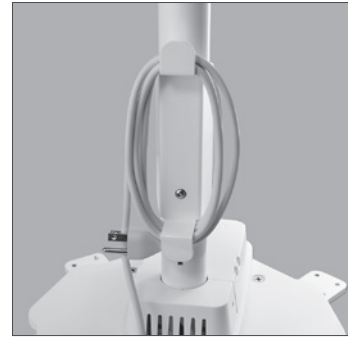
1. Connect the charge cable to the tablet's AC adapter. Then connect the adapter to your extension cord.
2. Position cables underneath the base housing's two plastic tabs. The extension cord should exit the rear of the housing.
3. Screw down the base housing using the **two (2) M6x14mm long base screws**.



- ## 8. Attach Base Housing Cover.
- Slide the cover into place and secure it using the **two (2) M3x6mm base security screws** and **silver L key**.



- ## 9. Secure Cord Wrap Bracket
- to the hole on the back of the mount post using the **one (1) M4 washer and the one (1) M4x8mm screw** and **silver L key**.



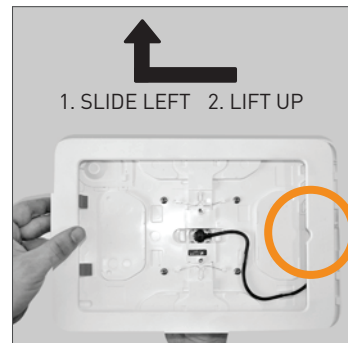
- ## 10. Wrap Cord
- around the bracket for easy mobility.



11. Assemble Head Unit.

Remove faceplate:

- A.** On the back of the Head Unit, pinch together the faceplate release clips.



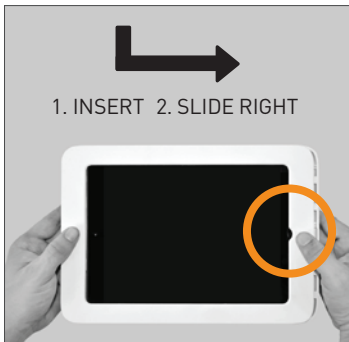
- B.** While still pinching the clips, flip the Head Unit over and slide the faceplate left, away from the home button, and lift up to remove the faceplate.

ASSEMBLY INSTRUCTIONS



- 12. Insert your tablet.** Lay the Head Unit face up and connect the charge cable.

NOTE: Before inserting your tablet, ensure the charge port is on the same side as the charge cable.



- 13. Install faceplate** by sliding the faceplate onto the Head Unit in the same fashion you removed it, but slide right, towards the home button.

NOTE: The faceplate only fits in one direction—therefore if it doesn't slide easily, please reverse the direction—do not force it.

Simply reverse these steps to remove your tablet.



- 14. Place your Head Unit onto the MagDOCK** in either landscape or portrait orientation. **Turn the key** to lock it in place.

WARNING: Not locking the MagDOCK will result in the unit falling off, possibly damaging the unit and/or the tablet. The Lilitab Pro is designed to be operated with the lock closed.

CLEANING INSTRUCTIONS



Cleaning kit available on our [website in the accessories section](#).

1. **Spray the Brilliantize** onto one of the cloths provided.

WARNING: Other cloth/material may scratch the surface of your Lilitab.



2. DO NOT spray directly onto your Lilitab!



3. **Rub gently** in a circular motion to remove fingerprints and dirt.

WARNING: Applying excess pressure can scratch the surface of your Lilitab.