

lilitab K Pro Head Unit

for iPad

Assembly Instructions

v1.0



lilitab

39 Larkspur st./ Suite B
San Rafael CA 94901

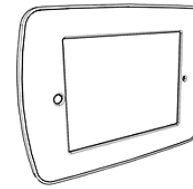
t: 888.705.0190

support@lilitab.com
www.lilitab.com

TABLE OF CONTENTS

Packing List.....	2
Assembly Instructions.....	3
Using the MayKEY.....	4
Using the iPad Air Power Button Trigger.....	5
Cleaning Instructions.....	5

PACKING LIST



1 x head unit & faceplate



MagKEY for iPad Air 1,2

OR



MagKEY for iPad 2,3,4

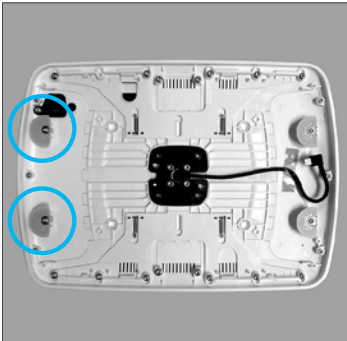
GOT QUESTIONS? WE'RE HERE TO HELP!

EMAIL support@lilitab.com **PHONE** 888.705.0190

ASSEMBLY INSTRUCTIONS



- 1. Open the lilitab head unit** by placing it facedown on a clean surface and squeezing the finger latches together as shown. Carefully lift up and the faceplate will come off, allowing access to the inside of the head unit.



- 2. Place the head unit onto a clean surface** with the inside of the enclosure facing up (with the cable on the right side). Rotate the **green “rotational keepers”** on the left side of the enclosure such that the #2 is closest to the outside edge.



- 3. Plug the cable that came with your kiosk into your tablet.**

For iPad (2017), Pro 9.7”, Air 1 & 2: Rotate the keepers on the left side such that the number “2” is closest to the center of the tablet as shown in the photo to the left.

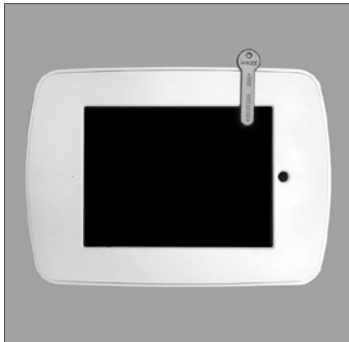
For iPad 2, 3 & 4: Rotate the keepers on the both sides such that the number “1” is closest to the center of the tablet.



- 4. Position the faceplate over the tablet.** Be sure to align the openings. Gently press down around the edges—it should snap into place.

Refer to your lilitab Mount owner’s manual for instructions on attaching the head unit.

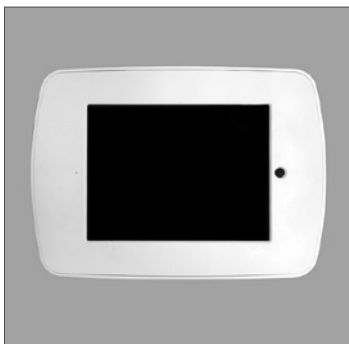
USING MAGKEY WITH IPAD (2017), AIR 1 & 2



1. You can use the included MagKEY with an iPad Air & Air 2. The MagKEY allows you to sleep the iPad without having any access to it. This ensures you (and your staff) can turn your kiosk on and off at the end of the day without removing the iPad. You'll always know when the iPad is sleeping because the MagKEY attaches to the face of the of unit (as shown).



2. To put your iPad to sleep, snap your MagKEY, with the orange side facing up, to the front on your lilitab.



3. To wake your iPad, remove the MagKEY and it will resume right where it left off before it went to sleep.

USING MAGKEY WITH IPAD 2, 3, & 4



1. You can use the included MagKEY with an iPad 2, 3 or 4 in your lilitab. The MagKEY allows you to sleep the iPad without having any access to it. This ensures you (and your staff!) can turn your kiosk on and off at the end of the day without removing the iPad from the kiosk. You'll always know when the iPad is sleeping because once inserted the MagKEY pokes out the top of unit like a little flag.



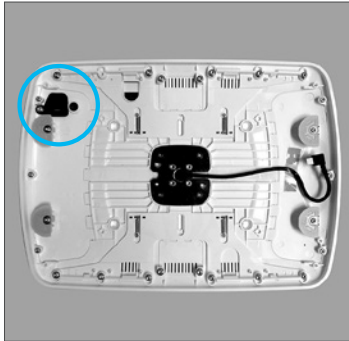
2. To put your iPad to sleep, insert your MagKEY with the orange side facing front and the black side facing back.



3. To wake your iPad, remove the MagKEY and it will resume right where it left off before it went to sleep.

ATTENTION: The MagKEY functionality requires that the iPad Cover Lock/Unlock preference is turned on. You can find this in Settings → Display & Brightness → iPad Cover Lock/Unlock. Replacement MagKEYs can be ordered directly from the website: www.lilitab.com.

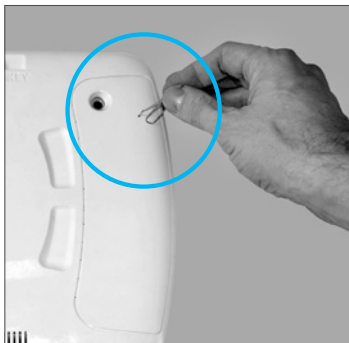
USING THE IPAD POWER BUTTON TRIGGER



1. You can actuate the power button located on the edge of your tablet using the black Power Button Trigger shown to the left.



NOTE: Here's a tablet installed in the correct orientation with the Power Button Trigger next to the tablet's power button.



2. Once installed you can actuate the Power Button Trigger via a paper clip inserted into the small opening on the rear below the camera opening.

CLEANING INSTRUCTIONS



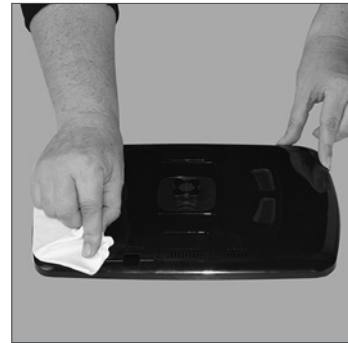
Cleaning kit available on our [website in the accessories section](#).

1. **Spray the Brillianize** onto one of the cloths provided.

WARNING: Other cloth/material may scratch the surface of your lilitab



2. DO NOT spray directly onto your lilitab!



3. **Rub gently** in a circular motion to remove fingerprints and dirt.

WARNING: Applying excess pressure can scratch the surface of your lilitab.