

# **lilitab K Pro Head Unit**

## for Samsung Tab A 10.1"

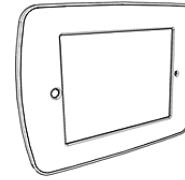
Assembly Instructions

v1.0

## TABLE OF CONTENTS

Packing List.....	2
Assembly Instructions and Cleaning Instructions.....	3

## PACKING LIST



1 x head unit & faceplate



1 x Silver L Key



4 x Torx screws

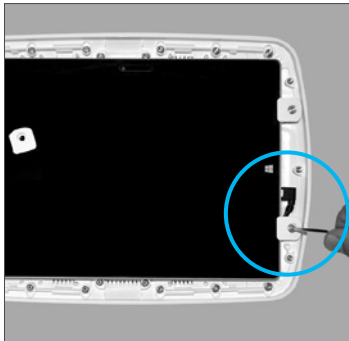
**GOT QUESTIONS? WE'RE HERE TO HELP!**

**EMAIL** [support@lilitab.com](mailto:support@lilitab.com) **PHONE** 888.705.0190

## ASSEMBLY INSTRUCTIONS



1. **Open the lilitab head unit** by placing it facedown on a clean surface and squeezing the finger latches together as shown. Carefully lift up and the faceplate will come off, allowing access to the inside of the head unit.



2. **Place the rear-shell face up on a clean surface.** Insert Samsung Tab A 10.4 and plug in micro usb charge cable. Screw down white keepers using the **4 torx screws** and **silver L key** provided.



3. **Position the faceplate over the tablet.** Be sure to align the openings. Gently press down around the edges—it should snap into place.

Refer to your lilitab Mount owner's manual for instructions on attaching the head unit.

## CLEANING INSTRUCTIONS



Cleaning kit available on our website in the accessories section.

1. **Spray the Brillianize** onto one of the cloths provided.

**WARNING:** Other cloth/material may scratch the surface of your lilitab



2. DO NOT spray directly onto your lilitab!



3. **Rub gently** in a circular motion to remove fingerprints and dirt.

**WARNING:** Applying excess pressure can scratch the surface of your lilitab.