

# **lilitab K Basic Head Unit**

## **Samsung Tab S2 9.7"**

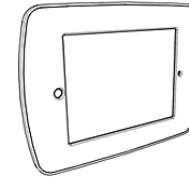
Assembly Instructions

v3.0

## TABLE OF CONTENTS

Packing List . . . . .	2
Assembly Instructions . . . . .	3
Cleaning Instructions . . . . .	4

## PACKING LIST



**1 x head unit & faceplate**

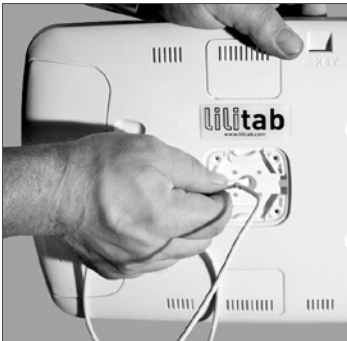
**GOT QUESTIONS? WE'RE HERE TO HELP!**

**EMAIL** [support@lilitab.com](mailto:support@lilitab.com) **PHONE** 888.705.0190

# ASSEMBLY INSTRUCTIONS



- 1. Open the lilitab head unit** by placing it facedown on a clean surface and squeezing the finger latches together as shown. Carefully lift up and the faceplate will come off, allowing access to the inside of the head unit.

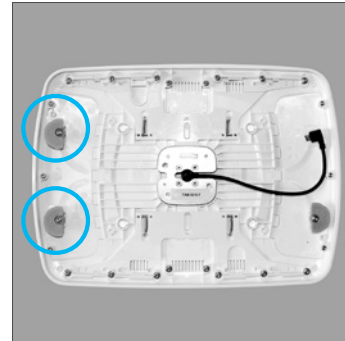


- 2. Thread the charge and sync cable** from the top of the pole through the metal plate located in the center of the lilitab head unit and pull through to the front side.

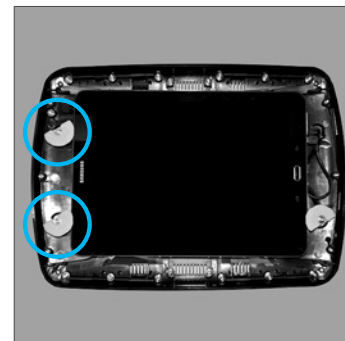


- 3. Attach your lilitab head unit** to the top of pole with the four (4) head mount security screws and silver L key that came with your mount.

**NOTE:** Rotating the neck security cover 90° will make access to the screw openings easier to access.



- 4. Rotate the green “rotational keepers”** on the left side of the enclosure such that the #2 is closest to the outside edge.



- 5. Plug the cable that came with your kiosk into your tablet.** Slide the tablet under the keeper on the left side ensuring your tablet is centered inside the enclosure. Rotate the keepers on the left side such that the number “1” is closest to the center of the tablet as shown in the photo to the left.



- 6. Position the faceplate over the tablet.** Be sure to align the openings. Gently press down around the edges—it should snap into place.

Refer to your lilitab Mount owner’s manual for instructions on attaching the head unit.

## CLEANING INSTRUCTIONS



Cleaning kit available on our website in the accessories section.

1. **Spray the Brilliantize** onto one of the cloths provided.

**WARNING:** Other cloth/material may scratch the surface of your lilitab



2. DO NOT spray directly onto your lilitab!



3. **Rub gently** in a circular motion to remove fingerprints and dirt.

**WARNING:** Applying excess pressure can scratch the surface of your lilitab.