

# **lilitab K Basic Head Unit**

## for Samsung Tab A 10.1"

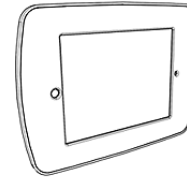
Assembly Instructions

v2.0

## TABLE OF CONTENTS

Packing List.....	2
Assembly Instructions.....	3
Cleaning Instructions.....	4

## PACKING LIST



1 x head unit & faceplate



1 x Silver L Key



4 x Torx screws

**GOT QUESTIONS? WE'RE HERE TO HELP!**

**EMAIL** [support@lilitab.com](mailto:support@lilitab.com) **PHONE** 888.705.0190

# ASSEMBLY INSTRUCTIONS



1. **Open the lilitab head unit** by placing it facedown on a clean surface and squeezing the finger latches together as shown. Carefully lift up and the faceplate will come off, allowing access to the inside of the head unit.

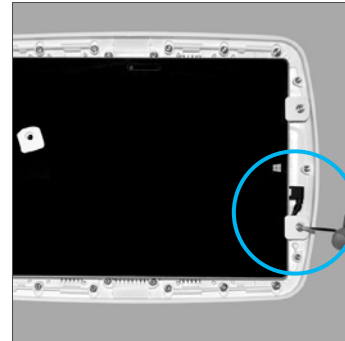


2. **Thread the charge and sync cable** from the top of the pole through the metal plate located in the center of the lilitab head unit and pull through to the front side.



3. **Attach your lilitab head unit** to the top of pole with the four (4) head mount security screws and silver L key that came with your mount.

**NOTE:** Rotating the neck security cover 90° will make access to the screw openings easier to access.



4. Insert Samsung Tab A 10.1 and plug in micro usb charge cable. Screw down white keepers using the **4 torx screws** and **silver L key** provided.



5. **Position the faceplate over the tablet.** Be sure to align the openings. Gently press down around the edges—it should snap into place.

Refer to your lilitab Mount owner's manual for instructions on attaching the head unit.

## CLEANING INSTRUCTIONS



Cleaning kit available on our website in the accessories section.

1. **Spray the Brilliantize** onto one of the cloths provided.

**WARNING:** Other cloth/material may scratch the surface of your lilitab



2. DO NOT spray directly onto your lilitab!



3. **Rub gently** in a circular motion to remove fingerprints and dirt.

**WARNING:** Applying excess pressure can scratch the surface of your lilitab.