

lilitab H Pro Head Unit

for iPad (2017), Pro 9.7," Air 1 & 2

Assembly Instructions

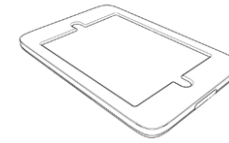
v2.0



TABLE OF CONTENTS

Packing List.....	2
Assembly Instructions.....	3
Functions and Cleaning Instructions.....	4

PACKING LIST



1 x head unit & faceplate



1 x Silver L Key



8 x M3x7mm Head Mount
Security Screws

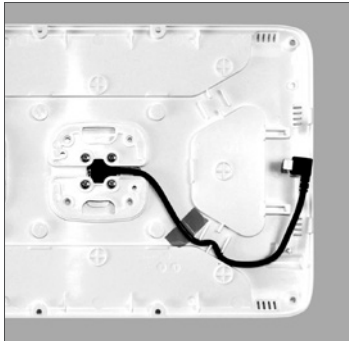


1 x MagKEY

GOT QUESTIONS? WE'RE HERE TO HELP!

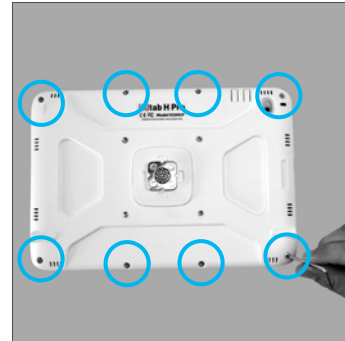
EMAIL support@lilitab.com **PHONE** 888.705.0190

ASSEMBLY INSTRUCTIONS



- 1. Place the rear-shell face up on a clean surface.** The lightning charge cable should be routed exactly as shown here.

NOTE: Not routing the cable as shown may prevent the case from closing properly.



- 4. Place the faceplate on top of the tablet, then flip it over onto a clean surface.**

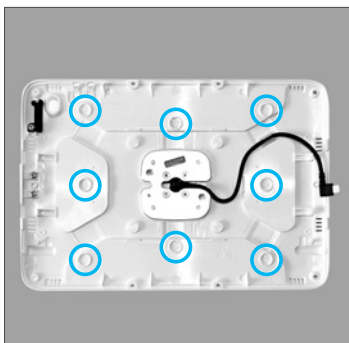
Secure with the **8 security screws** and **silver L key** provided.



Refer to your lilitab Mount owner's manual for instructions on attaching the head unit.

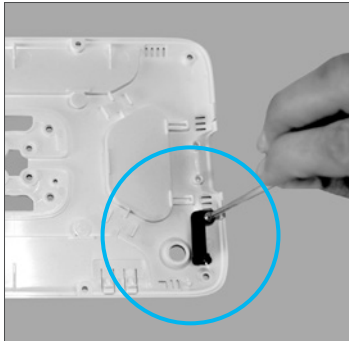


- 2. Insert your tablet.** Connect the charge cable as shown.



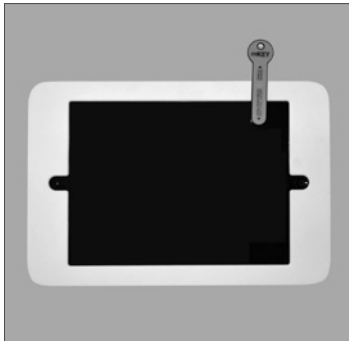
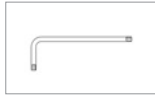
- 3. Depending on your tablet, you may need to install bumpers in your rear shell, locations shown here.**

FUNCTIONS



DISABLE POWER BUTTON

The H head has an optional pass-through power button prefitted. When depressed, this button actuates the power button on the side of the iPad. You can disable this function by removing the power button using the **silver L key** that comes with your kiosk as shown.



USING MAGKEY

To put your iPad to sleep, snap your MagKEY, with the orange side facing up, to the front on your lilitab. To wake your iPad, remove the MagKEY and it will resume right where it left off before it went to sleep.

ATTENTION: The MagKEY functionality requires that the iPad Cover Lock/Unlock preference is turned on. You can find this in Settings → Display & Brightness → iPad Cover Lock/Unlock.

Replacement MagKEYs can be ordered directly from the website: www.lilitab.com.

CLEANING INSTRUCTIONS



Cleaning kit available on our [website in the accessories section](#).

1. **Spray the Brillianize** onto one of the cloths provided.

WARNING: Other cloth/material may scratch the surface of your lilitab



2. DO NOT spray directly onto your lilitab!



3. **Rub gently** in a circular motion to remove fingerprints and dirt.

WARNING: Applying excess pressure can scratch the surface of your lilitab.