

# **lilitab H Basic Head Unit**

for iPad (2017), Pro 9.7," Air 1 & 2

Assembly Instructions

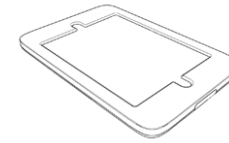
v2.0



## TABLE OF CONTENTS

Packing List.....	2
Assembly Instructions.....	3
Functions and Cleaning Instructions.....	4

## PACKING LIST



1 x head unit & faceplate



1 x Silver L Key



8 x M3x7mm Head Mount  
Security Screws



1 x MagKEY

**GOT QUESTIONS? WE'RE HERE TO HELP!**

**EMAIL** [support@lilitab.com](mailto:support@lilitab.com) **PHONE** 888.705.0190

# ASSEMBLY INSTRUCTIONS

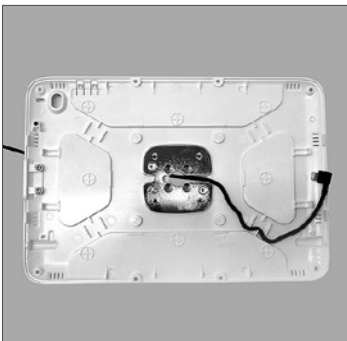


1. **Thread the charge and sync cable** from the top of the pole through the metal plate located in the center of the lilitab head unit and pull through to the front side.



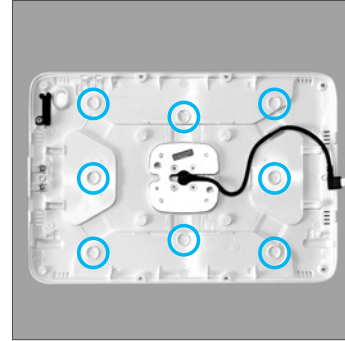
2. **Attach your lilitab head unit** to the top of pole with the four (4) head mount security screws and silver L key that came with your mount.

**NOTE:** Rotating the neck security cover 90° will make access to the screw openings easier to access.



3. **The lightning charge cable** should be routed exactly as shown here.

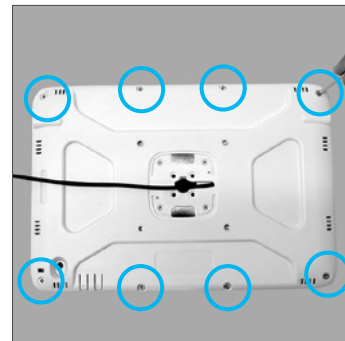
**NOTE:** Not routing the cable as shown may prevent the case from closing properly.



4. Depending on your tablet, you may need to install bumpers in your rear shell, locations shown here.



5. **Insert your tablet.** Connect the charge cable as shown.

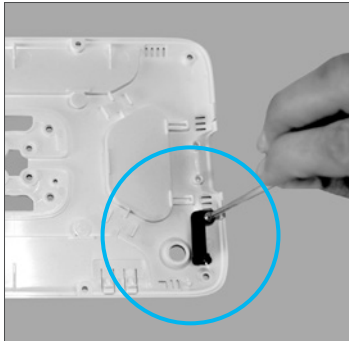


6. **Place the faceplate on top of the tablet.** Secure with the **8 security screws** and **silver L key** provided.



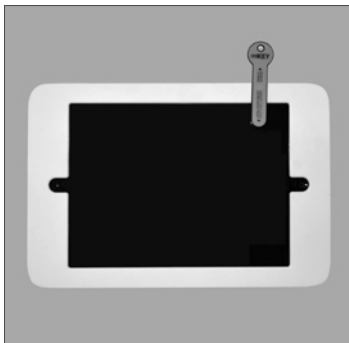
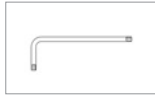
Refer to your lilitab Mount owner's manual for instructions on attaching the head unit.

## FUNCTIONS



### DISABLE POWER BUTTON

The H head has an optional pass-through power button prefitted. When depressed, this button actuates the power button on the side of the iPad. You can disable this function by removing the power button using the **silver L key** that comes with your kiosk as shown.



### USING MAGKEY

To put your iPad to sleep, snap your MagKEY, with the orange side facing up, to the front on your lilitab. To wake your iPad, remove the MagKEY and it will resume right where it left off before it went to sleep.

**ATTENTION:** The MagKEY functionality requires that the iPad Cover Lock/Unlock preference is turned on. You can find this in Settings → Display & Brightness → iPad Cover Lock/Unlock.

Replacement MagKEYs can be ordered directly from the website: [www.lilitab.com](http://www.lilitab.com).

## CLEANING INSTRUCTIONS



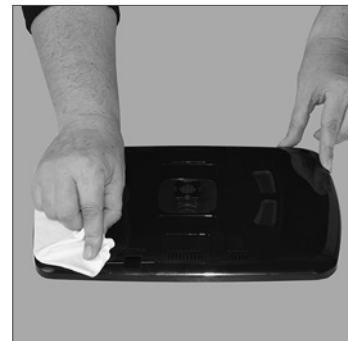
Cleaning kit available on our [website in the accessories section](#).

1. **Spray the Brillianize** onto one of the cloths provided.

**WARNING:** Other cloth/material may scratch the surface of your lilitab



2. DO NOT spray directly onto your lilitab!



3. **Rub gently** in a circular motion to remove fingerprints and dirt.

**WARNING:** Applying excess pressure can scratch the surface of your lilitab.