

upTOP ALPHA Jeep JT/JL

1



Effective 2023 we are making some changes to our products that might not be reflected in this guide. Major changes for 2023 include:

- Removal of **lock washers** from hardware kits in some cases.
- Switching to through-bolt assembly on Alpha roof racks instead of rivet nuts.
- Foot to rack bolts upgraded to lock nuts.
- Revised slot array in grooveTEK on Alpha/Bravo roof racks.

Thank you for selecting upTOP™ as the choice for your Jeep™ brand vehicle. The roof rack designed for your truck requires competency in assembly, following detailed instructions, and a small amount of mechanical aptitude. If you do not feel comfortable performing the installation yourself it is recommended that you seek a professional installation facility near you.

TOOLS REQUIRED

5/32 Allen wrench
5mm Allen wrench
7/16 wrench
13mm wrench
Tape Measure
Grease Pencil
VibraTITE VC-3 Threadlocker (Included)
Masking Tape

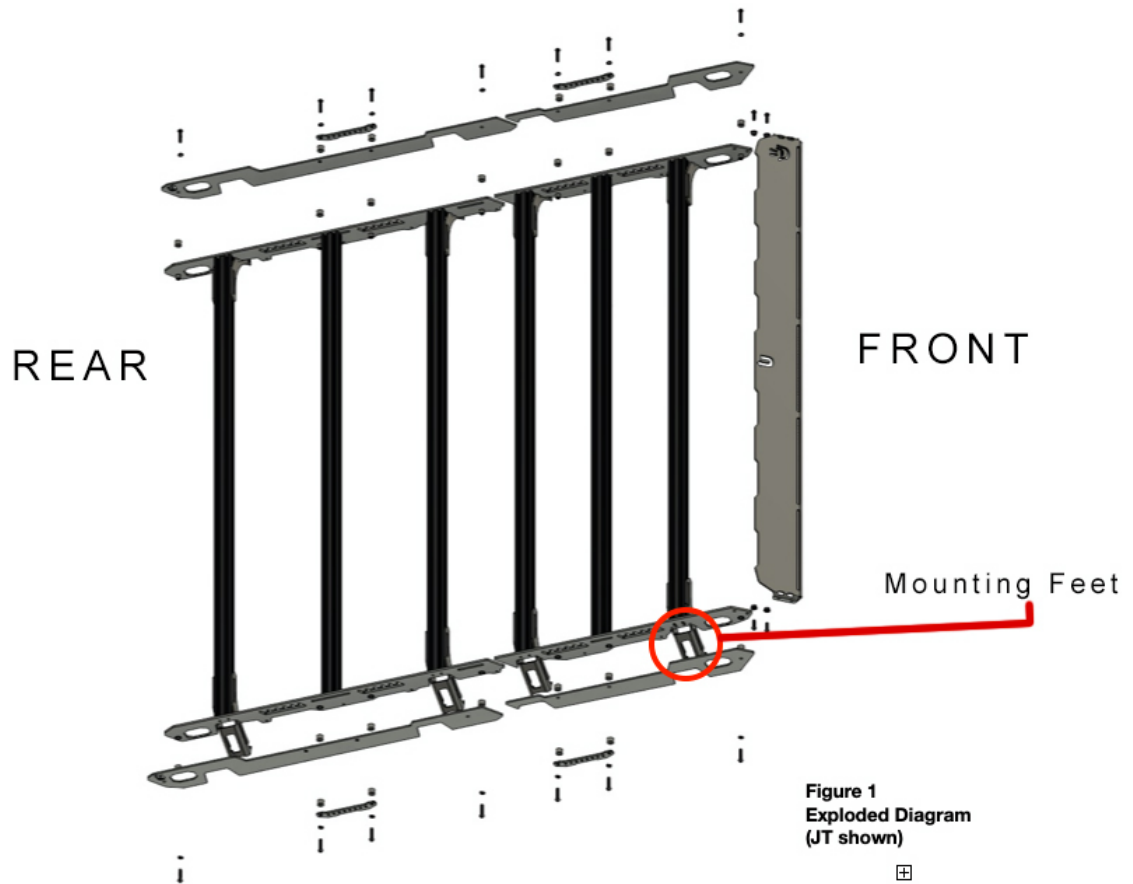
The dynamic load of your roof rack is dependent on the fiber glass reinforced drip rails of your Jeep. Our system is designed to distribute a load across the eight (8) included gutter mounts. The unique two piece rack design can be configured to cover the entire roof surface area in colder months with the front section removable to allow easy top removal in warmer climates. DO NOT EXCEED 250 pounds total weight (excluding rack assembly) capacity when the vehicle is in motion. Failure to follow this can compress the weather gaskets between the removable top of your Jeep causing the gutter mounts to contact the upper part of your doors resulting in damage to the painted finish of your doors.

It is necessary to obtain measurements for the placement of the PPF (paint protection film) prior to installing the rack. The PPF acts as a barrier between the gutter mounts and the drip rails on your Jeep. This will also help to align the provided gutter mounts ensuring that the rack is assembled and attached in the proper location.

RACK ASSEMBLY FOR THE JEEP PRODUCTS TAKE PLACE ON THE VEHICLE IN A SPECIFIC ORDER AS OUTLINED IN THIS GUIDE. YOU WILL NOT PRE-ASSEMBLE THE RACK AND INSTALL TO THE VEHICLE.

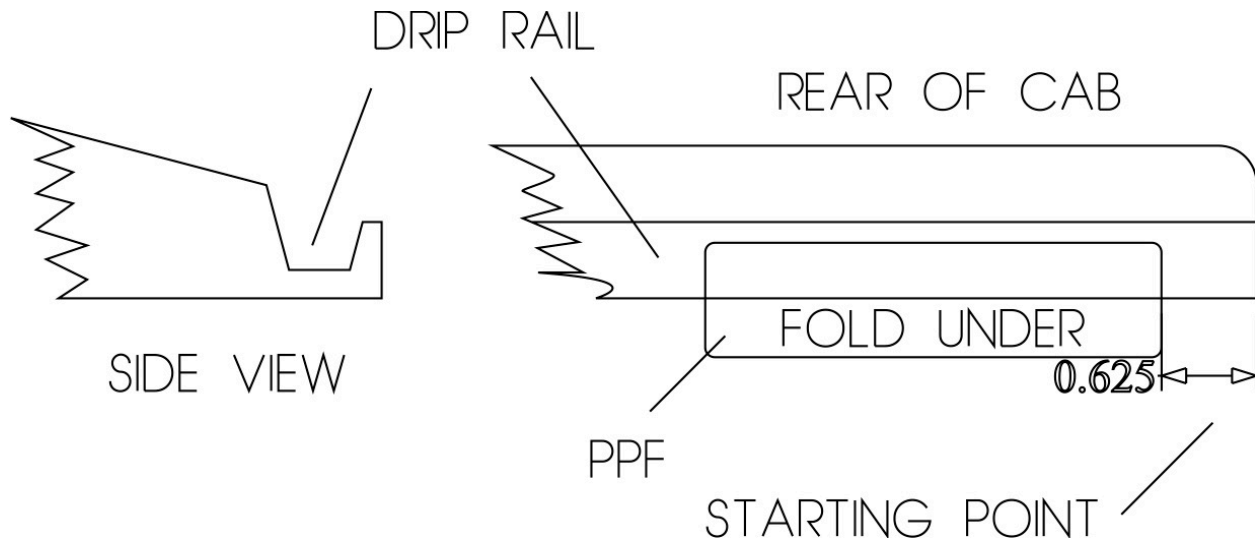
The assembly and installation instructions will begin on the next page.

EXPLODED DIAGRAM JEEP (JT SHOWN)



Your parts are identified by number. The component list for each respective rack system (JT/JL/JK) can be found at the end of this guide. The orientation above can also serve as a reference for general assembly of the rack. For the Jeeps the design dictates that the gutter mounts attach to the load bars themselves instead of the rack body parts as with our other designs.

The included threaded slide plates will need to be inserted into the load bars to provide anchor points for the feet. The diagram is viewed from above for reference but the threaded inserts will be inserted on the vertical (1.0"/25.4mm) side of the four (4) load bars identified above. The feet attach to the load bars in the orientation shown above.



STEP 1

JEEP GLADIATOR (JT) DRIP RAIL PPF

TOOLS REQUIRED:

Tape Measure
Grease Pencil
PPF Film Kit

The PPF film shipped with your kit is to protect the painted finish of the top of your **JT**. It also aids in the alignment and placing of the gutter mount locations required for installation.

Begin the process by thoroughly cleaning the face and bottom edge of the drip rail to prepare the surface for the adhesive backed PPF film strips.

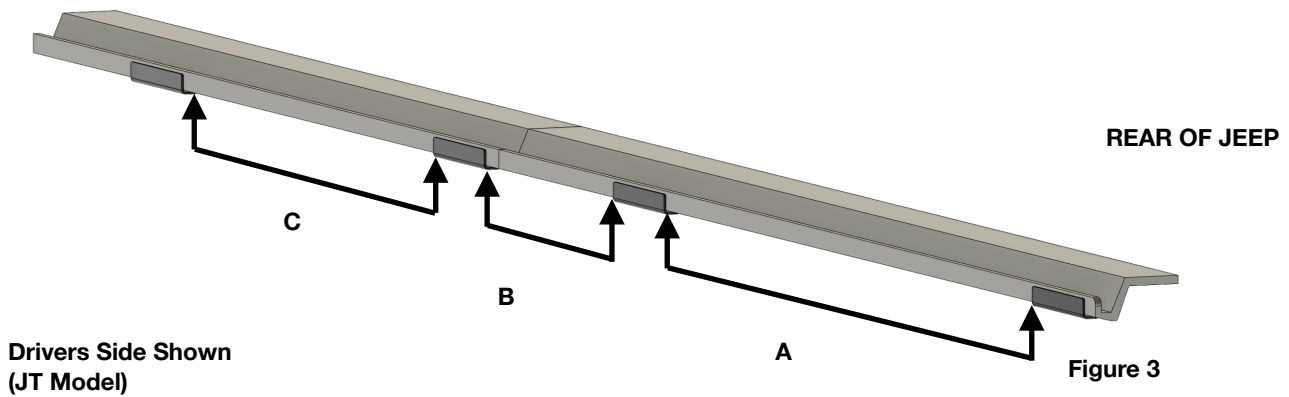
We recommend that you do the drivers side of the vehicle first.

Starting at the **REAR** of the drip rail (closest to the rear of the vehicle) measure from the back edge towards the front of the truck .625" (5/8"). Lightly mark that area with the grease pencil. From that grease pencil mark measure three (3) inches further towards the front of the vehicle and make a second mark. This will give you a measured 3" window from the rear of the drip rail for placing the first PPF film and facilitate the installation of the additional three pieces required for the drivers side. All of the proceeding measurements are made from PPF film edge to PPF film edge to avoid confusion.

The PPF film should cover the front leading edge of the drip rail and roll under the drip rail to protect both visible faces of the factory drip rail.

No special tools are required for pieces this small. Just ensure that the drip rails are completely clean and apply **DRY** by hand. Do not use soapy water, etc...as a slip agent for the PPF film strips.

The illustration on the following page details the measurements and spacing for locating the PPF film strips in the proper places.



Make/Model	A Distance	B Distance	C Distance	Starting Distance
20-up JT	21.75" (21 3/4)	7.625" (7 5/8")	14.875" (14 7/8)	.625" (5/8)
18-up JL 4 Door	See Rear of Guide	For JL Specific	PPF Alignment	
18-up JL 2 Door				
06-18 JK 4 Door*				
06-18 JK 2 Door*				

*Full length drip rails not available on JK platform. Please see JK specific section of this guide for clarification. DRILLING REQUIRED.

NOTE:

Because the PPF film strips are wider than the supplied gutter mounts you have a little margin for error in the placement. We also include four (4) extra PPF film strips should you make a mistake.

With all four (4) of the PPF strips attached to the driver side repeat the process for the passenger side. The measurements will be the EXACT same starting from the rear of the drip rail.

Once the PPF strips are attached in all eight (8) locations you can gather the components to begin putting the rack onto your Jeep. Due to the modular design of this rack system it **MUST BE ASSEMBLED ON THE VEHICLE**. Doing this ensures that the gutter mounts lock into position as intended. It will also provide the proper tolerances for all the bits to fit together. The Jeep Alpha and Bravo products **CANNOT BE ASSEMBLED ON THE GROUND** and then installed to the vehicle.

It is **STRONGLY** recommended that you have an additional person to be a set of helping hands throughout the process. Familiarize yourself with the steps outlined in this guide. **Additionally you can access the installation video via the instructions tab on our website.**

STEP 2

upTOP Gutter Mount System Overview

Our mounting system designed for the Jeep platform uses a two piece clamp assembly. One piece will slide over your factory drip rail (centered over the areas you installed the PPF in step one) and a second part that has a rivNUT installed in it. This part will slide down into the factory drip rail and create a physical clamp to secure the rack system to your Jeep.

- There are two (2) different gutter mount designs in your kit. Two (2) identified as PN#1349. These are to be used on the driver and passenger side of the Jeep at the FORWARD MOST load bar position.
- PN#1348 (the remaining 6 gutter mounts) will be used three (3) per side in all other locations. It is critical that the proper parts are used in the required locations. Failure to comply will cause the rack assembly not to sit level on the roof of the vehicle after installation.
- PN#1352 (QTY 8) are designed to mate to the gutter mounts and slide down into the factory drip rails to provide tension on the gutter mounts and lock the roof rack onto your vehicle.

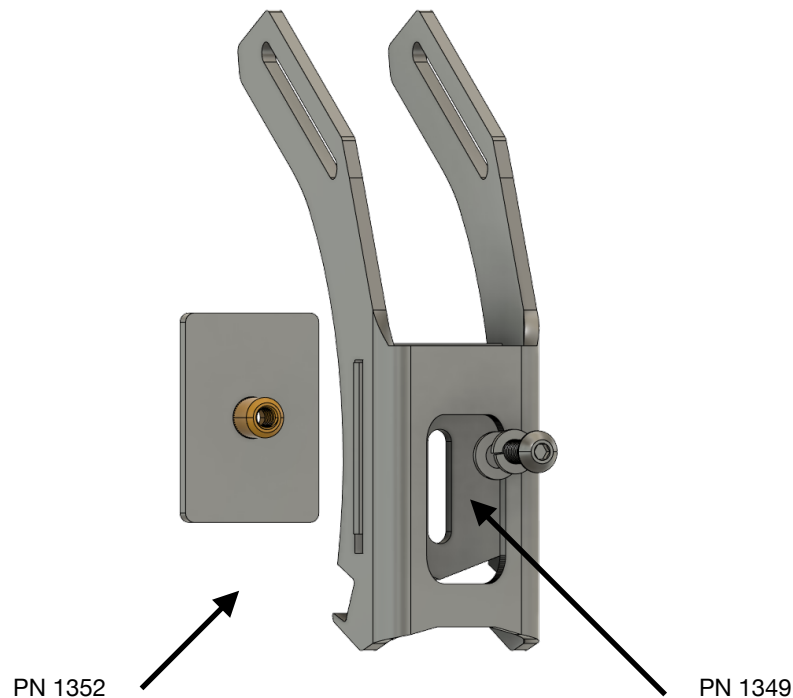


Figure 4

Front Gutter Mount (PN1349) and Gutter Slide Lock.

- **It is critical for proper fitment that the rivNUT protrusion on the slide mount (1352) faces the gutter mount. If it is flipped to face the roof of the truck it will not fit in the drip channel. This is the same for all 1352 used.**

STEP 3

Installing gutter mounts and load bars to vehicle.

Locate the following parts/quantity:

- (2) 1349 Front Gutter Mount
- (6) 1348 Other Gutter Mount
- (8) 1352 Gutter Slide Lock
- (4) LB57 57" Load Bar
- (1) Hardware Bag Labeled **GUTTER MOUNTS TO DRIP RAILS**
- (1) Hardware Bag Labeled **LOAD BARS TO GUTTER MOUNTS**
- (1) Hardware bag Labeled **VC3 THREAD COMPOUND**

Note: This bag will also contain an application brush.

Remove the hardware from the bag labeled **GUTTER MOUNTS TO DRIP RAILS** and apply a small amount of VC3 thread compound to the end (last five threads or so) of each bolt. Allow to dry (15 mins: should be gummy but not wet) Keep the lock washers and fender washers isolated.

Remove the hardware from the bag labeled **LOAD BARS TO GUTTER MOUNTS** and apply a small amount of VC3 thread compound to the end (last five threads or so) of each bolt. Allow to dry (15 mins: should be gummy but not wet) Keep the lock washers and flat washers isolated. This bag also contains sixteen (16) threaded insert plates. These will need to be inserted in each of the four load bars as seen in the diagram below. This will be repeated in all four (4) load bars that are to attach to the gutter mounts in step 4.

Note: Shown protruded for illustration but will be fully inserted.

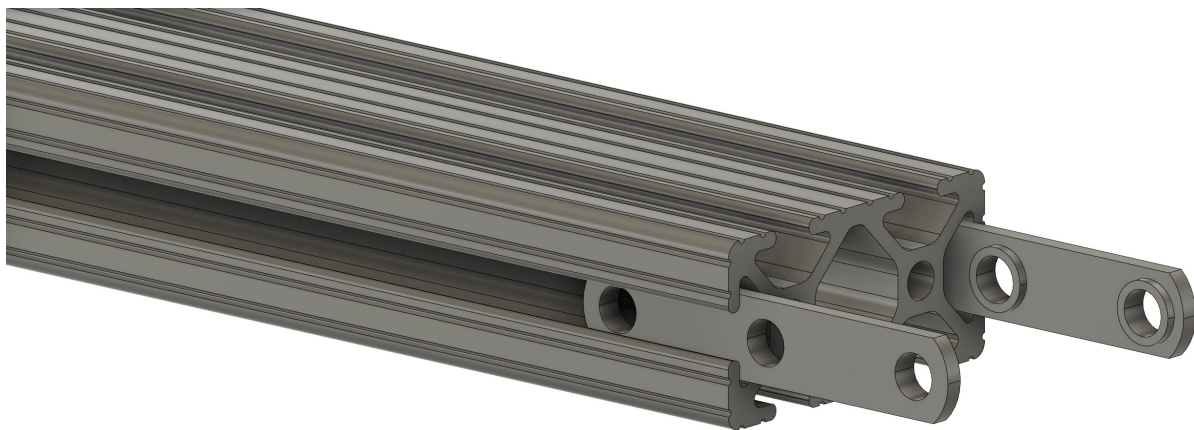


Figure 5

Step 4

Load Bars to Gutter Mount Gutter Mount to Drip Rail

Begin by hand threading the M8 hardware from the bag labeled **GUTTER MOUNTS TO DRIP RAILS**. Leave these loose so that they slide up and down with no effort. Observe hardware orientation in **Figure 4**. Repeat the process with all eight (8) gutter mount assemblies.

Once you've got them all hand assembled take the two (2) parts labeled 1349 and start at the **FRONT** of the vehicle. Place one gutter mount assembly on the **DRIVER** side and the other on the **PASSENGER** side. Center each Gutter mount (1349) over the PPF film installed in step 1.

Gently slide the 1352 into the channel of the drip rail and hand tighten the M8 fastener with a 5mm Allen wrench. **DO NOT FULLY TIGHTEN**. We want the assembly to be adjustable to facilitate squaring the load bars during installation.

With both the **DRIVER** and **PASSENGER** side gutter mounts attached gather the hardware for the load bar. Each load bar will require 12 bolts, 12 lock washers and 12 flat washers. Nest the load bar into the gutter mount and align the threaded inserts/slots in the load bars to match up with the slots in the gutter mounts. Start each fastener by hand. Observe hardware orientation in **Figure 5**.

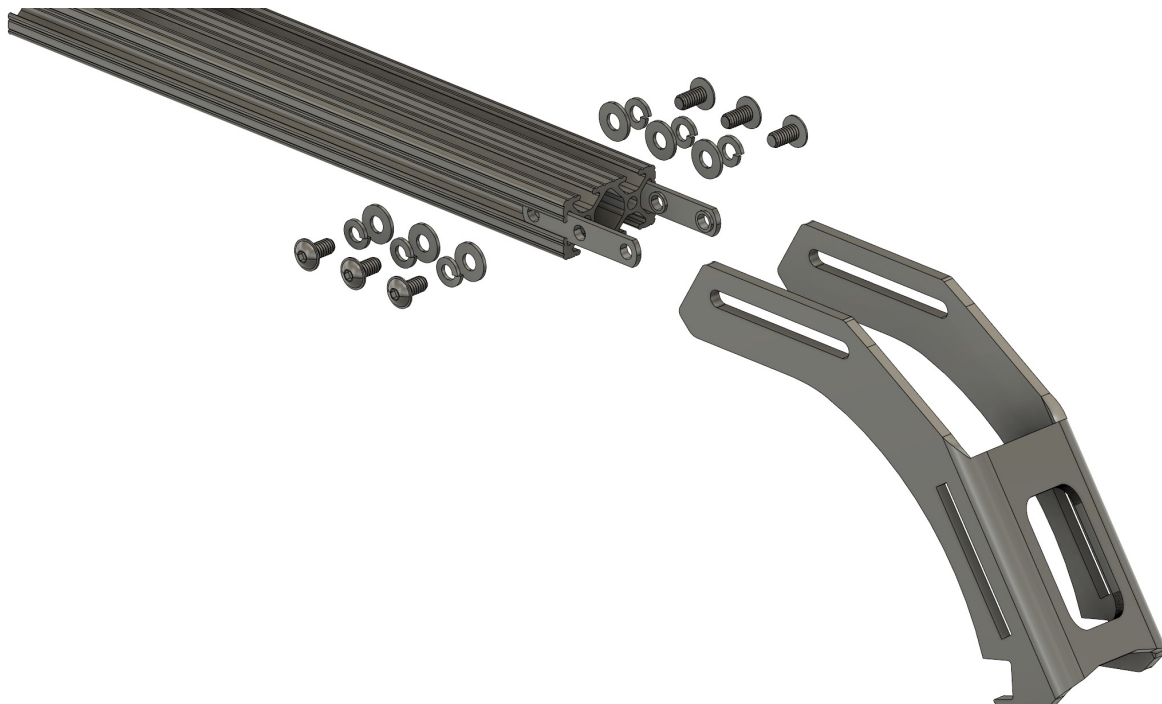
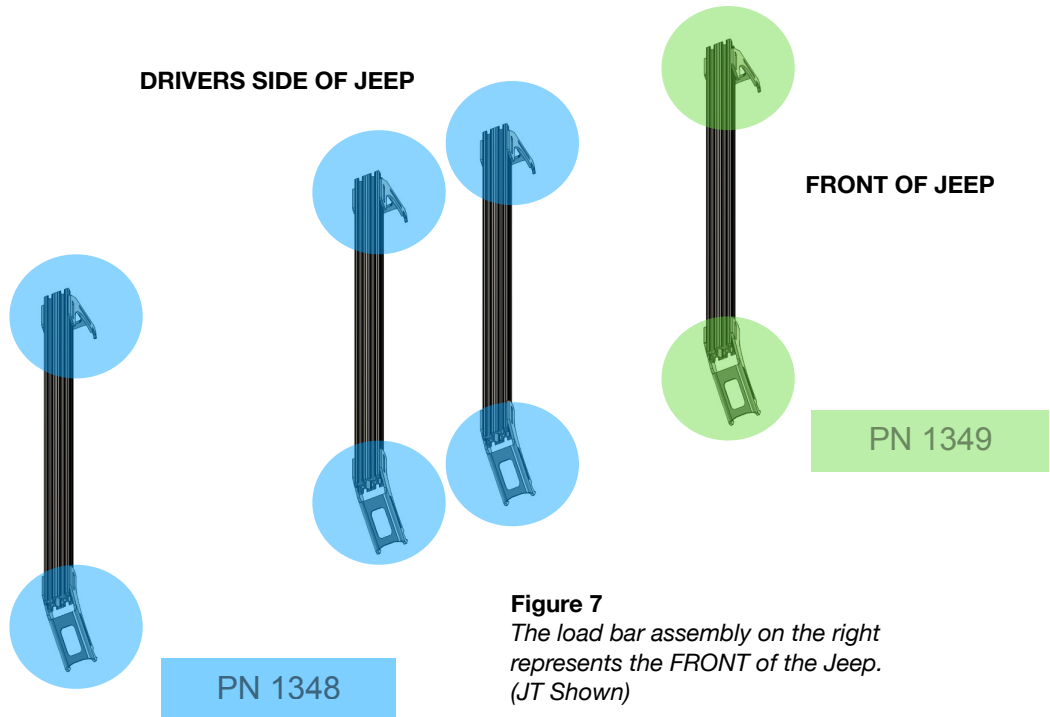


Figure 6
(PN1349 Shown)

With the two (2) 1349 gutter mounts installed and mated to a load bar proceed by repeating the process with the remaining 1348 gutter mounts and load bars until all four (4) load bars are **LOOSELY** installed onto the roof of the Jeep.



Progress Check

At this point you should have the four structural load bars loosely attached to the gutter mounts and the gutter mounts loosely attached to the drip rails on your jeep. Now we need to set the location of the load bars to ensure they are centered on the roof of your Jeep. Your load bars are 57" wide (for reference).

STEP 5

Centering Load Bars

Each of your load bar assemblies need to be measured and centered on the roof of the Jeep before you tighten everything up. This requires measuring each load bar in respect to a location (indicated on next page) to ensure that the amount of load bar protruding from each gutter mount is the same on the driver and passenger side of the Jeep.

Additionally you will be leveling the load bars with the tops of the gutter mounts. This will help ensure that any lighting installed on the roof rack assembly will be perfectly parallel to the ground.

Taking the time to get this step dialed in will guarantee that the rack fits your Jeep as our designers intended giving you the upTOP signature fit and finish.

Step 5 (Visual)

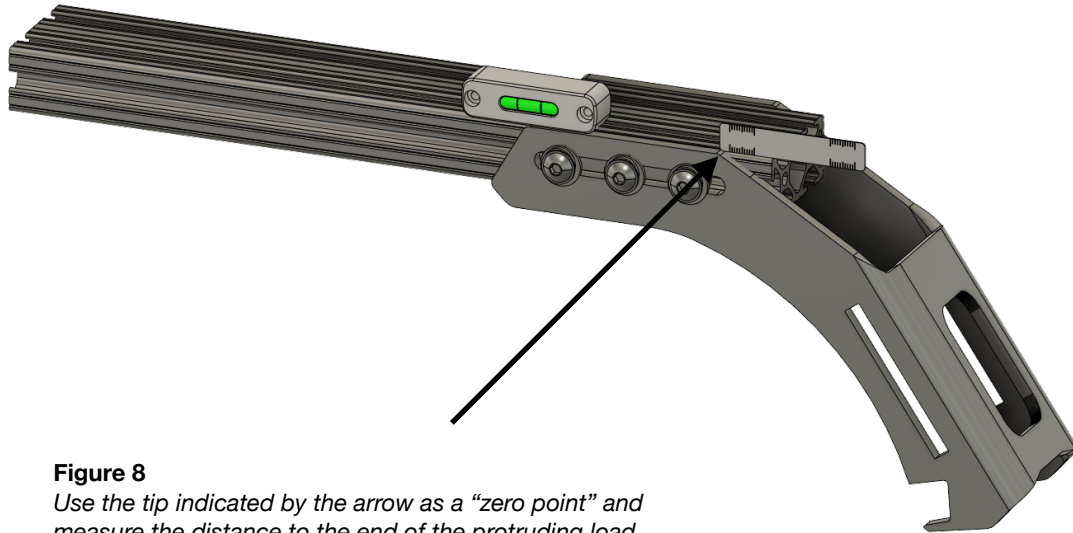


Figure 8
Use the tip indicated by the arrow as a “zero point” and measure the distance to the end of the protruding load bar.

At each connection point where the load bar nests into the gutter mount use a small level or straight edge to ensure that the top of the load bar is even with the top leading edge of the gutter mount.

Measure the distance of the load bar protruding out of the end of the gutter mount and ensure that the measurement is the same on the driver and passenger side of the front load bar.

NOTE:

You will perform this step on each individual load bar assembly. The measurements on each load bar might differ slightly from the front to the back of the vehicle due to the varying taper of the roof of your jeep.

Position	Drivers Side	Passenger Side
Front Load Bar		
Second Load Bar		
Third Load Bar		
Fourth Load Bar		

Record the measurements here for future reference. You can access this for quicker reinstallation if the rack parts are removed from the Jeep for accessing the removal of the top. Keep for your records.

Step 6

Driver Front grooveTEK Installation

The grooveTEK components will serve as the base structure for the rest of the rack assembly to attach to. There are four(4) components required for this step. These numbers are engraved on the individual components.

You will also notice pre-installed rivNUTS. These rivNUTS have a protrusion on them and the protrusion faces the **INSIDE** of the roof rack assembly.

Component Part #	Jeep JT	Jeep JL 2 Door	Jeep JL 4 Door	Jeep JK 2 Door	Jeep JK 4 Door
Driver Front	1051				
Driver Rear	1049				
Pass Front	1048				
Pass Rear	1050				

The grooveTEK will attach to the load bars installed in the previous steps. Locate the bag of hardware labeled **grooveTEK to LOAD BARS**. It is **NOT** required to apply the VC3 thread compound to any load bar fasteners.

Inside this bag you will find two different types of hardware. The HEX bolts are for the front load bar assembly. The BUTTON HEAD BOLTS are for the remaining three load bars. The additional button head bolts are for the remaining two adjustable load bars that you can install at the end of this process.

Starting on the drivers side front. Gather the 1051 component grooveTEK and install it to the 1st (front) and second load bar. In all applications these would be the two (2) load bars sitting over the front of your Jeep Top (the removable bits). Tighten the fasteners to 21 Inch Pounds.

It's imperative that the HEX bolts are used at the front to maintain adjustability of the rack should any minor adjustments be needed after a completed installation. These are hidden by your armor installed in later steps.

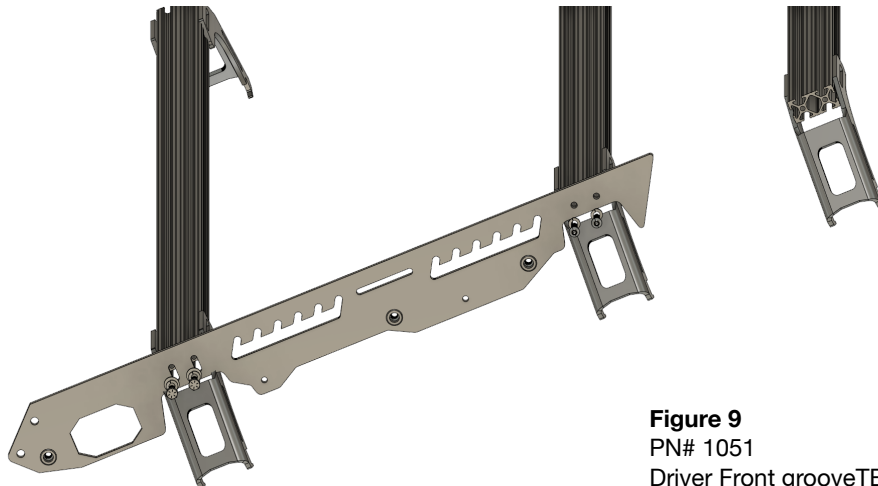


Figure 9
PN# 1051
Driver Front grooveTEK Install

Step 7

Driver Rear grooveTEK Installation

Now gather the 1049 component and install it to load bars 3 and 4 (the load bars mounted over the rear portion of your top) with the supplied BUTTON head bolts and lock washers as indicated in the illustration below. Tighten to 21 inch pounds.

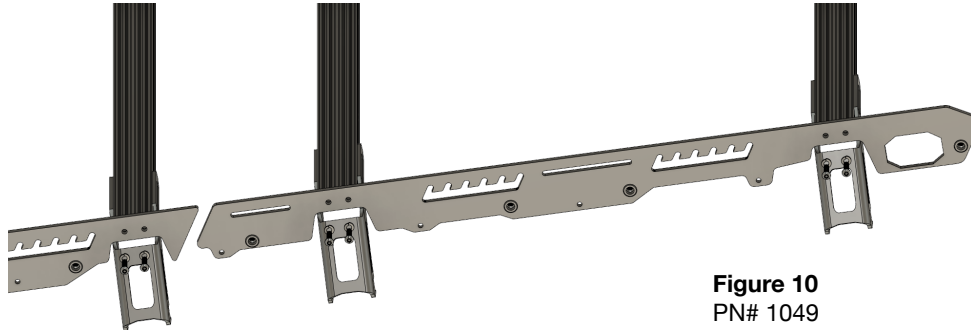


Figure 10
PN# 1049

STEP 8

Passenger Side grooveTEK Installation

Repeat the process outlined in step 6 and step 7 to install the passenger side grooveTEK components.

1048 Front Passenger grooveTEK

1050 Rear Passenger grooveTEK

The same hardware assortments and torque specs (21 inch pounds) will be used to complete the installation.

With the four (4) grooveTEK components attached the next step will be to install the fairing.

STEP 9 NOTES

There are a multitude of fairing designs available for your roof rack. These instructions cover the installation of the “no-cut” design.

If you are installing lighting into your fairing please refer to our website for detailed instructions and videos on how to install/align your lighting into our fairing.

Fairings cut for standard single row lighting options will be shipped with a hardware kit including brackets, spacers and hardware for their specific applications. Instructions and videos for those applications can also be found on our website.

If you are installing any of our quickWIRE products you will want to stop the rack installation at this time and refer to the quickWIRE installation guide and complete the wiring tasks before proceeding with rack installation.

Step 9

Fairing Installation (Two people recommended)

The fairing attaches to the front section of grooveTEK. Locate the bag of hardware labeled **FAIRING INSTALLATION** and remove the hardware. Apply VC3 thread locker to the threads of the bolts. Allow the VC3 to dry (15 mins).

Align the machined holes on the folded tabs of your fairing to the machined holes located at the front of the grooveTEK and slide the bolts into place.

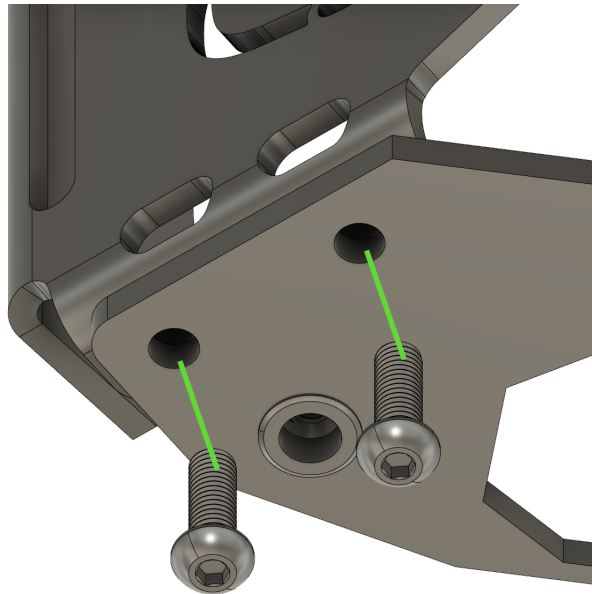


Figure 11
Fairing attachment points
25mm Bolts

Reach around behind the fairing and install a flange nut onto each bolt you just inserted. Using a 5mm Allen wrench and 13mm wrench tighten the fasteners to 35 inch pounds. Repeat the process for both sides and then proceed to Step 10-Handle Tying.

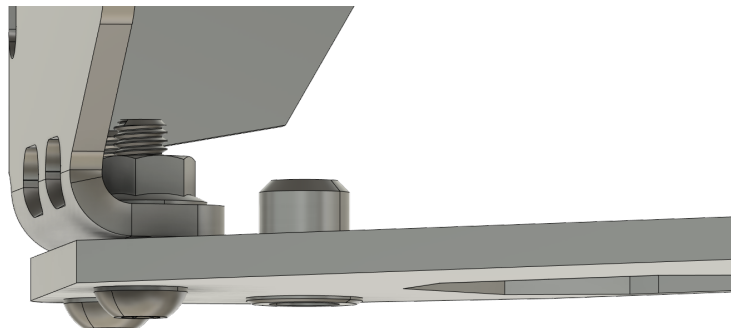


Figure 12
Inside Fairing attachment points.
M8 Flange Nuts
Torque Spec 35 Inch Pounds

Step 10

Grab Handle Tying

TOOLS REQUIRED:

Needle Nose Pliers
Lighter
Crimp Tool
Side Cutting Pliers

As the grab handles are installed to the rack as a completed assembly the next step is to tie and complete the safety wire installation for the grab handles of your rack. The installation of the armor to your roof rack requires the grab handle lace plate as part of the final attachment.

The grab handles and their required components are packaged by themselves. Locate the bag and proceed with tying the handles.

[Our process for handle tying is outlined in a video on our website under the instructions tab.](#)

Feel free to follow our method or get creative with your paracord knots and go your own route. The kits are shipped with standard black 550 paracord but you can order any color that you like from paracord planet or other online sources.

The included safety wire and crimp replacements are available on our website or by calling our technical support Monday-Friday from 8am-4pm MST.

Once you've tied all included handles you can proceed to step 11: Armor attachment.

Step 11

Armor Attachment

As with the grooveTEK the armor for your rack consists of four components. The part numbers for each component are engraved. You will also notice a beveled edge on each piece. The beveled edge is the OUTSIDE of the component. Locate the components for your vehicle type as well as the hardware bag labeled **ARMOR TO grooveTEK**. You will also need the hardware included with the **GRAB HANDLES**.

Component Part #	Jeep JT	Jeep JL 2 Door	Jeep JL 4 Door	Jeep JK 2 Door	Jeep JK 4 Door
Driver Front	1147				
Driver Rear	1149				
Pass Front	1148				
Pass Rear	1150				

STEP 11 (CONTINUED) : Driver Front Armor Attachment

Starting again with the driver front gather component 1147 and attach the armor to the grooveTEK with the hardware. 5mm Allen wrench required.

NOTE: The 35mm bolt and lock washer are for the very front attachment point. A plastic spacer (black) will nest between the armor and grooveTEK to provide clearance for wiring, etc..The longer 55mm bolts are for the lace plate portion of your grab handle. Plastic spacers (black) will go between the lace plate and the armor as well as the armor and the grooveTEK. See Figure 13.

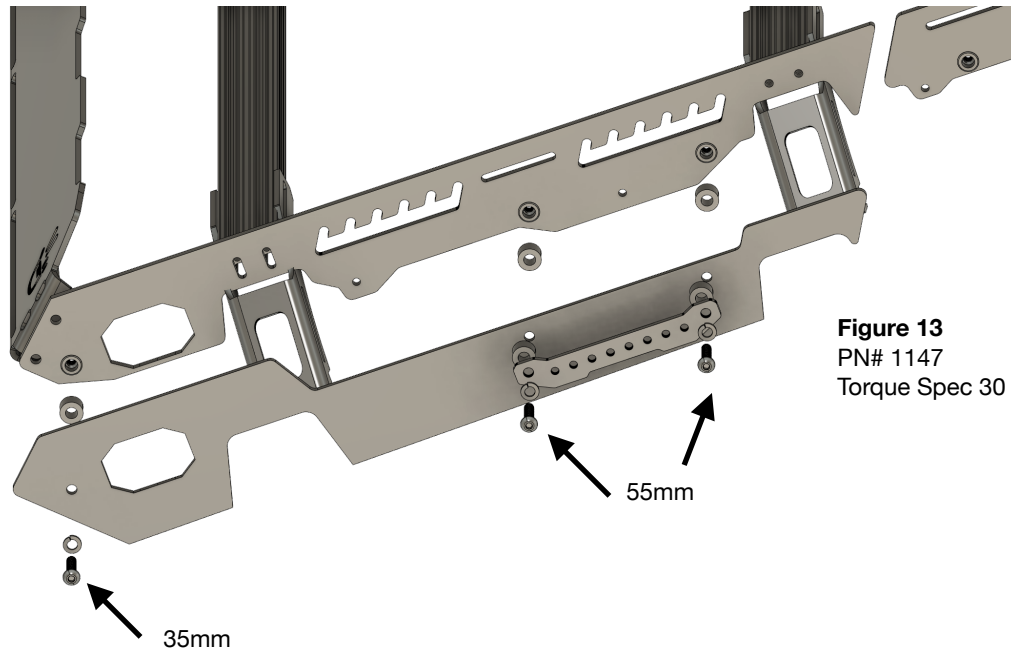


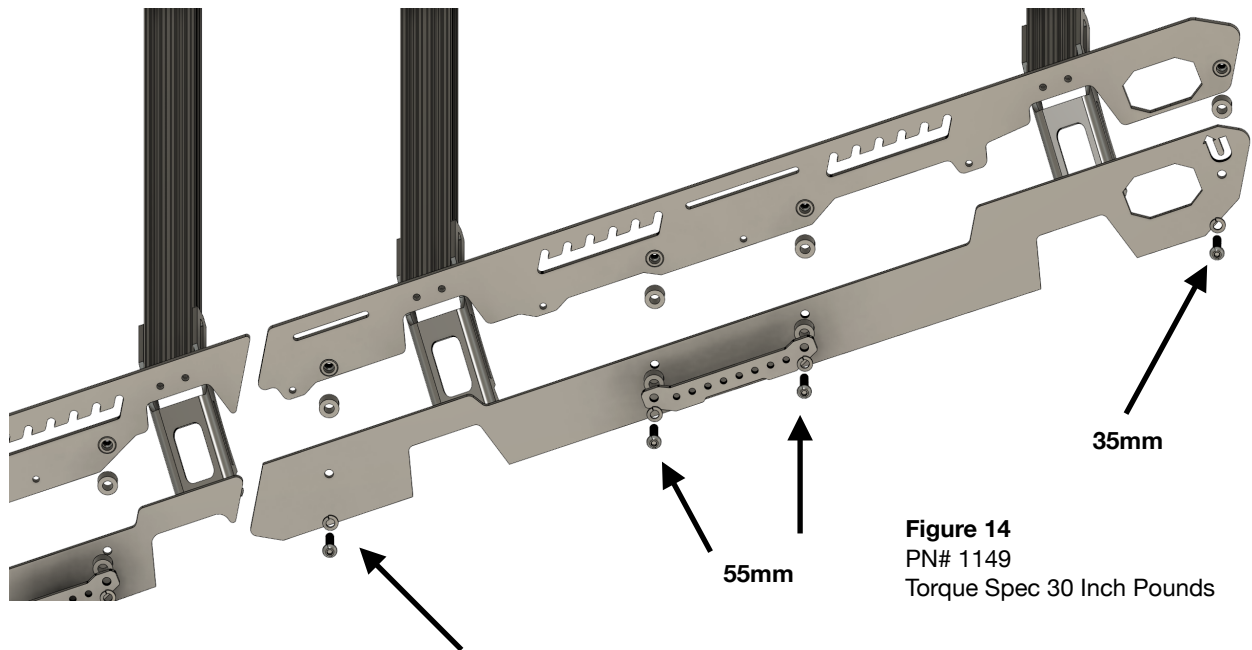
Figure 13
PN# 1147
Torque Spec 30 Inch Pounds

Step 12

Driver Rear Armor Attachment

Gather component 1149 and the hardware. Again you will need some of the hardware from the Grab Handle Kit. The same method of attachment as Step 11 will get the armor connected to the rear grooveTEK. 5mm Allen wrench required. See figure 14 on next page.

Step 12 (Continued) : Driver Rear Armor Attachment



Step 13

Passenger Side grooveTEK Installation

Repeat the process outlined in step 11 and step 12 to install the passenger side armor components.

1148 Front Passenger Armor

1150 Rear Passenger Armor

The same hardware assortments and torque specs (30 inch pounds) will be used to complete the installation.

With the four (4) armor components attached you can begin to complete the final installation checks.

Final Installation Checks

- Inspect and tighten the 8 fasteners that secure the slide locks into the drip rails. Be sure that the slide locks are fully seated into the drip rail channels.
- Inspect and tighten the 48 fasteners that secure the load bars into the gutter mounts. Verify and make any final minor adjustments to the load bars in respect to the top of the gutter mounts to ensure they haven't shifted during installation.
- Inspect and tighten the four hardware assembly points for the front fairing.
- Inspect and tighten the bolts used to secure the grooveTEK into the load bars.
- Inspect and tighten the bolts used to attach the armor to the grooveTEK.
- Verify and complete any wiring connections that might need to be secured.
- Install any scenePOD accessories.

Additional load bars

Your Jeep rack shipped with additional load bars not shown or covered in the installation guide. These can be added in the additional slot locations anywhere that you choose to install them. They are not critical to the structural integrity of the rack assembly. Feel free to use them as you see fit. Hardware is provided for this purpose.

TRANSFERRING LIGHT BAR TO REAR RACK ASSEMBLY

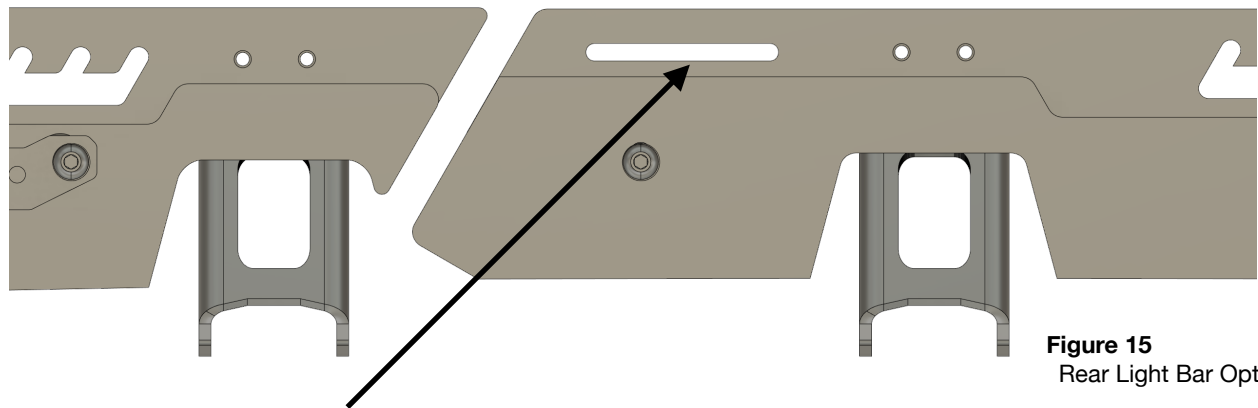


Figure 15
Rear Light Bar Option

FLOAT SLOT
Rear Rack Lighting (*optional)

When the front portion of your rack is removed to facilitate easy removal of the hard top portions of your Jeep in warmer weather it is possible to transfer your light bar from the front of your rack to the rear portion of the rack. The Float Slot identified in Figure 15 was designed for this purpose.

Additional hardware would be required (not included). The attachment methods would vary based on light bar make and model. Our specialists can help devise a mounting solution. Email support@uptopoverland.com for assistance.

TOP REMOVAL

In order to remove the components of the front of your hard top it is necessary to remove the front portion of your upTOP roof rack. Disassemble in reverse order and take special care to identify and catalog the fasteners for reinstallation.

The modular design of our rack system allows the rear portion to remain on the back of the hard top for gear storage. Please keep this in mind when routing wiring or mounting gear to your load bars.

To remove the entire hard top from your Jeep the front of the roof rack will still need to be uninstalled however the rear portion of your top can be removed with the rack fully intact.

NEVER LIFT THE HARD TOP COMPONENTS FROM THE ROOF RACK ASSEMBLY.

GENERAL MAINTENANCE AND CARE

The various components of your roof rack were designed to survive in the harshest environments. The finish on your roof rack can be a mix of powder coat and/or paint.

Wash with soap and water in the general manner that you care for the exterior of your vehicle. Never apply solvents to the finished parts of your roof rack.

Periodically inspect the rack and various components for wear or missing parts. Repair or replace as needed. Replacement parts and hardware are available from upTOP overland.

Do not use this product in a manner inconsistent with the design.

Never exceed the weight capacity of your roof rack. All weight limits quoted are for dynamic (moving) only and static (stopped) weights might be considerably higher. Consult vehicle manufacturer for recommended weight restrictions.

It is the sole responsibility of the end user to inspect rack and components keeping them in good working order. It is additionally the sole responsibility of the end user to ensure rack is used in harmony with the intended design.

NOTE!!

Fairings cut for specific light bars as well as universal 40 cuts will experience significant wind noise when installed into the rack assembly and driven at speed with the light bar absent from the assembly. Wind passes through the open holes and/or slot and is intercepted by the front slot on the load bars.

The fairings are designed with this in mind and the angles/openings are engineered to work in unison with the light bars to limit or eliminate noise/vibration.

Component Lists
Current 2.1.2021

Jeep Gladiator Alpha Roof Rack
Component Parts List

Gladiator JT PN#	Quantity	Description
1047	1	Front Section grooveTEK DR SIDE
1048	1	Front Section grooveTEK PS SIDE
1049	1	Rear Section grooveTEK DR SIDE
1050	1	Rear Section grooveTEK PS SISE
1147	1	Front Section Armor DR SIDE
1148	1	Front Section Armor PS SIDE
1149	1	Rear Section Armor DR SIDE
1150	1	Rear Section Armor PS SIDE
1283-12XX	1	Fairing-Multiple Options
LB57	6	57" Load Bar
1349	2	Jeep Gutter Mount FRONT
1348	6	Jeep Gutter Mount REAR
1352	8	Jeep Gutter Mount Slide Locker
PP12	1	Paint Protection Film (12pc Sheet)
4318108012	8	Gutter Mount Load Bar Bolts
4305108	8	Gutter Mount Load Bar LK WSHR
433403108	8	Gutter Mount Load Bar FLT WSHR
43826514016	24	Remaining Load Bar Bolts
4305108	24	Remaining Load Bar LK WSHR
4397408030	4	30mm Fairing Attachment Bolts

Gladiator JT PN#	Quantity	Description
4425308125	4	Fairing Attachment Flange Nut
ETT010	16	3 Tap 1/4-20 Threaded Plates -Load Bar to Gutter Mounts
43826514010	48	.625" Bolt -Load Bar to Gutter Mounts
4305108	48	LK WSHR -Load Bar to Gutter Mounts
433403108	48	FLT WSHR -Load Bar to Gutter Mounts
VBT5ML	1	VC3 5mL Tube
4397408025	8	25mm Gutter Slide Bolt
43971708000	8	M8 LK WSHR Gutter Slide
4397308624	8	M8 Fender Washer Gutter Slide
4397408035	6	Armor to grooveTEK 35mm Bolt
43971708000	6	Armor to grooveTEK LK WSHR
212	6	Armor to grooveTEK Spacer
4014	4	GPCA Grab Handle
4004	4	Grab Handle Lace Plate
4397408055	8	Grab Handle Bolt 55mm
43971708000	8	Grab Handle Lock Washer
212	16	Grab Handle Spacer
116AS	2	2pc Safety Retention
ParaBLK	2	2pc Paracord Black

NOTES

Front fairing options for lighting require additional hardware kit.

PN# LBKIT EX Fits Extreme LED

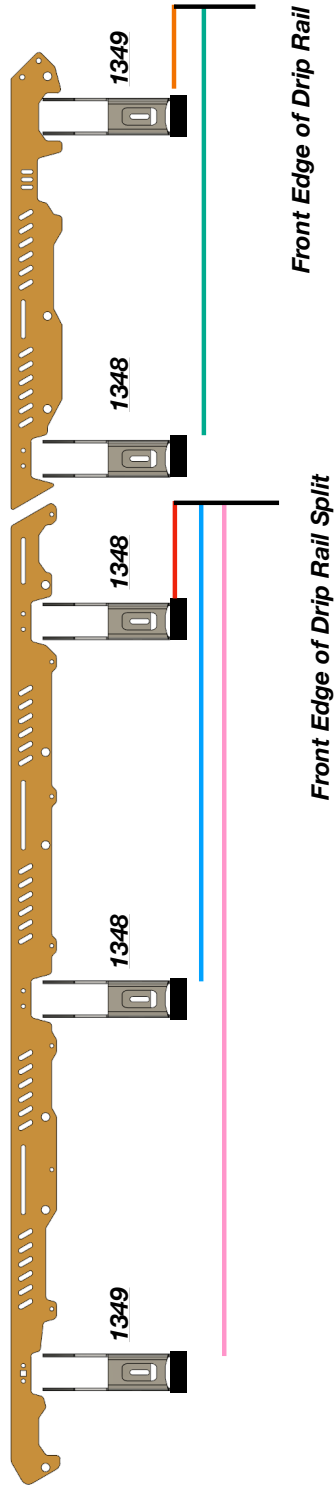
PN# LBKIT BD Fits Baja Designs

VERIFY COLOR OPTION ON WORK ORDER PRIOR TO PACKAGING

ALL M8x1.25 Armor and Handle attachment points MUST BE TAPPED.

ALL JEEP™ color match options require paint. Components must be powder coated black prior to delivering to paint shop.

FRONT of Jeep



From front of Jeep JL drip rail use a tape measure and mark the following edges. These edges will be the reference point for the FRONT edge of the PPF Film application.

FRONT REMOVABLE TOP

4.75" Front edge of forward most PPF strip on the Freedom Top front section of vehicle.

14.125" Front edge of rear PPF strip on Freedom Top front section of vehicle.

REAR TOP

6.75" Front edge of forward most PPF strip measured from the split of the drip rail of the vehicle.

31.00" Front edge of middle PPF strip measured from the split of the drip rail of the vehicle.

55.00" Front edge of rear PPF strip measured from the split of the drip rail of the vehicle.

PN#	Quantity	Description
1047.2	1	Front Section grooveTEK DR SIDE -MUST INSTALL M8 rivNUTs
1048.2	1	Front Section grooveTEK PS SIDE -MUST INSTALL M8 rivNUTS
1075	1	Rear Section grooveTEK DR SIDE -MUST INSTALL M8 rivNUTS
1076	1	Rear Section grooveTEK PS SISE -MUST INSTALL M8 rivNUTS
1147.2	1	Front Section Armor DR SIDE
1148.2	1	Front Section Armor PS SIDE
1171	1	Rear Section Armor DR SIDE
1172	1	Rear Section Armor PS SIDE
1283-12XX	1	Fairing-Multiple Options
LB57	8	57" Load Bar
1349	4	Jeep Gutter Mount FRONT/REAR
1348	6	Jeep Gutter Mount ALL OTHER
1352	10	Jeep Gutter Mount Slide Locker -MUST INSTALL M8 rivNUT
PP12	1	Paint Protection Film (12pc Sheet)
4318108012	8	1349 Load Bar Bolts
4305108	8	1349 Load Bar LK WSHR
433403108	8	1349 Load Bar FLT WSHR
43826514016	24	Remaining Load Bar Bolts
4305108	24	Remaining Load Bar LK WSHR
4397408030	4	30mm Fairing Attachment Bolts
4425308125	4	Fairing Attachment Flange Nut
ETT010	20	3 Tap 1/4-20 Threaded Plates -Load Bar to Gutter Mounts
43826514010	60	.625" Bolt -Load Bar to Gutter Mounts
4305108	60	LK WSHR -Load Bar to Gutter Mounts

PN#	Quantity	Description
433403108	60	FLT WSHR -Load Bar to Gutter Mounts
VBT5ML	1	VC3 5mL Tube
4397408025	10	25mm Gutter Slide Bolt
43971708000	10	M8 LK WSHR Gutter Slide
4397308624	10	M8 Fender Washer Gutter Slide
4397408035	6	Armor to grooveTEK 35mm Bolt
43971708000	6	Armor to grooveTEK LK WSHR
212	6	Armor to grooveTEK Spacer
4014	6	GPCA Grab Handle
4004	6	Grab Handle Lace Plate
4397408055	6	Grab Handle Bolt 55mm
43971708000	12	Grab Handle Lock Washer
212	24	Grab Handle Spacer
116AS	3	2pc Safety Retention
ParaBLK	3	2pc Paracord Black

upTOP finePRINT

- **It is recommended to inspect the rack hardware at regular intervals to ensure fasteners are tight. If the rack ever needs to be removed and reinstalled you will need to repeat the silicone sealant steps before reinstallation of the rack to roof hardware.**
- **The powder coated finish on your rack uses a chemical compound to maintain UV stability for years to come. Wash the roof rack at regular intervals to keep the load bar channels, drip rails and mounting components free of dirt and debris. Foreign objects (mud) can dry and cause noise and vibration.**
- **If your color matched components are painted care for them in the same manner as you care for the exterior finish of your vehicle.**
- **Repair or replace worn parts with expediency. All hardware is available for purchase by calling our technical support line at 720.730.6381 Monday-Friday 8am to 4pm MDT or by email 24/7 364 (we don't answer email on Christmas-get over it) support@uptopverland.com**
- **It is the responsibility of the end user to ensure all electrical connections are secured and fused properly for the circuit load they are carrying.**
- **upTOP Roof Rack dynamic (moving) weight capacity can often exceed the OEM vehicle manufacturers specification. In all cases the OEM specifications supersede the upTOP dynamic rated load capacity.**
- **DO NOT use the upTOP product in a manner inconsistent with its design intention. This will void your warranty.**
- **DO NOT modify or alter structural components of upTOP roof rack assemblies. This will void your warranty.**
- **Excessive speeds over rough terrain can exceed dynamic weight loads causing structural fatigue or failure of aluminum and steel components. Use your best judgement and common sense before committing to full send with an overloaded rack product.**
- **Component damage or failure due to negligence will result in voided warranty claims. Any failed component must be returned to upTOP with a properly submitted RMA request. Any product received without authorized RMA request will be returned to sender at their expense.**
- **Leave. No. Trace. Our planet is fragile. Some parts of it have been undisturbed for generations. Stay on trails and designated routes. DO NOT LITTER. Pack it in Pack it out. Basically be a decent human and protect our culture, wild lands and ecosystems.**