



upTOP ALPHA
2G Tundra 2007-2021
crewMAX / Double Cab

PROFESSIONAL INSTALLATION RECOMMENDED

See page 2 for critical information about the installation steps required for this vehicle type. Proceed with extreme caution if you tackle this yourself.

Thank you for selecting upTOP™ as the choice for your vehicle. The Alpha roof rack designed for your platform requires competency with both power and hand tools as well as assembly procedures. *For the Toyota Tundra 2G crewMAX and Double Cab truck we STRONGLY recommend professional installation due to factory installed vehicle safety systems.*

TOOLS REQUIRED

- 5/32 Allen wrench
- 5mm Allen wrench
- 10mm wrench (2X)
- 13mm wrench
- 1/2" wrench (2X)
- 7/16" wrench
- Silicone Sealant
- VibraTITE VC-3 thread compound (Included)

Because you need to drill for and install threaded inserts on your Toyota Tundra truck the static and dynamic weight loads are dependent on proper installation of the provided hardware. When properly installed the load capacity of your roof rack is as follows:

- *Dynamic Capacity (Vehicle in Motion) 250 pounds*
- *Static Capacity (Vehicle Stationary) 400 pounds*

Please conform to the recommended cargo weights above at all times for safe operation of the vehicle.

You are encouraged to inspect the contents of your package prior to completing assembly and installation. For any missing/damaged parts email pictures and descriptions to support@uptopoverland.com with your order number as reference in the subject line. A specialist will assist you with the process for field repair or component replacement.

It is important to plan for any wiring that needs to be completed during the course of rack installation. Incorporate these steps into the steps in this guide at points that reduce additional disassembly of the rack while it is installed on the vehicle.

BE ADVISED

In order to install this product on your vehicle it is required that you drill and install specialized fasteners that are included with your roof rack kit. Although there are no special tools required to complete this task you must be very careful throughout the process so that you do not damage factory installed wiring and components that operate your side curtain air bags.

The wiring for the side curtain air bags is attached along the interior of the vehicle rollover cage and must be moved out of the way prior to drilling your holes and installing your threaded inserts.

In order to do this you will need to disassemble a good portion of the vehicle interior to access the wiring areas so that you can unclip and move it out of the way to complete your installation. After installation is completed you must place the wiring back into factory locations using the OEM fasteners and clips to do so.

We strongly recommend professional installation of this product for your Toyota Tundra 2G truck. If you are going to complete the installation yourself please follow these guidelines to ensure a safe and proper installation of the product:

- *Disconnect the vehicle battery prior starting your installation. Leave the vehicle sitting for 45 minutes. After 45 minutes you need to touch the factory terminals (positive and ground) together to discharge any residual current that may be sitting idle in your vehicles electrical system. The terminals are the bits attached to the wiring and NOT THE BATTERY. Under no circumstances should you EVER attempt to short the battery positive and negative posts together. This can result in fire or serious injury.*
- *The drill bit provided in your installation kit is the final size required for the included mounting hardware for your roof rack. You are encouraged to use smaller drill bits to create pilot holes in the required areas and enlarge those holes by increasing drill bit size until you reach the size of the included drill bit (23/64"). We have provided a stop collar for the final drill bit size to prevent damage to the vehicle interior but it is the responsibility of the installer to ensure that additional steps are taken to ensure the piloting drill bits are limited on the depth that they can penetrate the cabin of the vehicle.*
- *No special tools are required to install the provided hardware for mounting your roof rack. Each hardware kit arrives to you with a simple bolt/washer assembly that you can use to properly set your fasteners. You will require (2) 10mm wrenches to complete this task.*
- *Additional tools and steps will be required to take the vehicle interior apart to provide yourself clearance around the SRS inflatable restraint system components. Those tools and steps are not covered in this guide. Professional installers will have the tools and knowledge for proper disassembly and reassembly of the vehicle.*
- *You will use the assembled roof rack placed on the roof of the vehicle to locate and mark the proper drilling locations for both the crewMAX and Double Cab variants of this roof rack. The rack is heavy and awkward to hoist when fully assembled. Lift and position with extreme care and enlist the help of other people to accomplish this task.*
- *The steps for assembly and installation of both the crewMAX and Double Cab variants of the Alpha roof rack are nearly identical with the major difference being that the crewMAX fitment is longer and contains more cross bars. Illustrations in this guide will show the crewMAX variant of the Alpha roof rack. For Double Cab fitments follow along knowing that you are assembling a shorter rack with fewer cross bars than shown in these illustrations.*
- *If you choose to proceed with the installation yourself you assume the liability for doing so.*

What's in the Box?

Toyota Tundra 2G 2007-2021 crewMAX

| Part Number | Qty | Description | Notes |
|------------------------|-----|--------------------------------|---------------------|
| 1005 | 1 | Driver side grooveTEK | |
| 1006 | 1 | Passenger Side grooveTEK | |
| 1105 | 1 | Driver Side Armor | |
| 1106 | 1 | Passenger Side Armor | |
| 1302 | 2 | Front Feet | |
| 1303 | 2 | Rear Feet | |
| 1226-1234 1401-1407 | 1 | Wind Screen 2G Tundra-All* | Specified in Order. |
| 8001 BLK | 1 | Master Hardware Kit-Blackout** | |
| Grab Handles | 2pr | Grab Handle 2.0 Kit-Alpha | |

*Wind screens may include additional hardware for light mounting. Specified at time of order. See lighting and electrical guide for more information.

**Master pack hardware may include additional hardware not required for installation. It is not uncommon to have some left over hardware after installation is completed.

Toyota Tundra 2G 2007-2021 Double Cab

| Part Number | Qty | Description | Notes |
|------------------------|-----|--------------------------------|---------------------|
| 1003 | 1 | Driver side grooveTEK | |
| 1004 | 1 | Passenger Side grooveTEK | |
| 1103 | 1 | Driver Side Armor | |
| 1004 | 1 | Passenger Side Armor | |
| 1302 | 2 | Front Feet | |
| 1303 | 2 | Rear Feet | |
| 1226-1234 1401-1407 | 1 | Wind Screen 2G Tundra-All* | Specified in Order. |
| 8001 BLK | 1 | Master Hardware Kit-Blackout** | |
| Grab Handles | 2pr | Grab Handle 2.0 Kit-Alpha | |

*Wind screens may include additional hardware for light mounting. Specified at time of order. See lighting and electrical guide for more information.

**Master pack hardware may include additional hardware not required for installation. It is not uncommon to have some left over hardware after installation is completed.

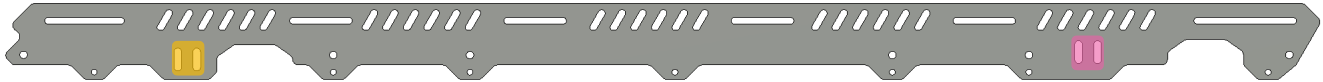
Rack Assembly
crewMAX / Double Cab
grooveTEK Diagram



crewMAX grooveTEK

PN 1005 / 1006

- 7 cross bars
- Front foot attachment point indicated in **ORANGE**.
- Front feet are angled to match roof profile.
- Rear foot attachment point indicated in **PINK**.
- Front and Rear cross bar can be mounted vertically for more rigidity when needed.

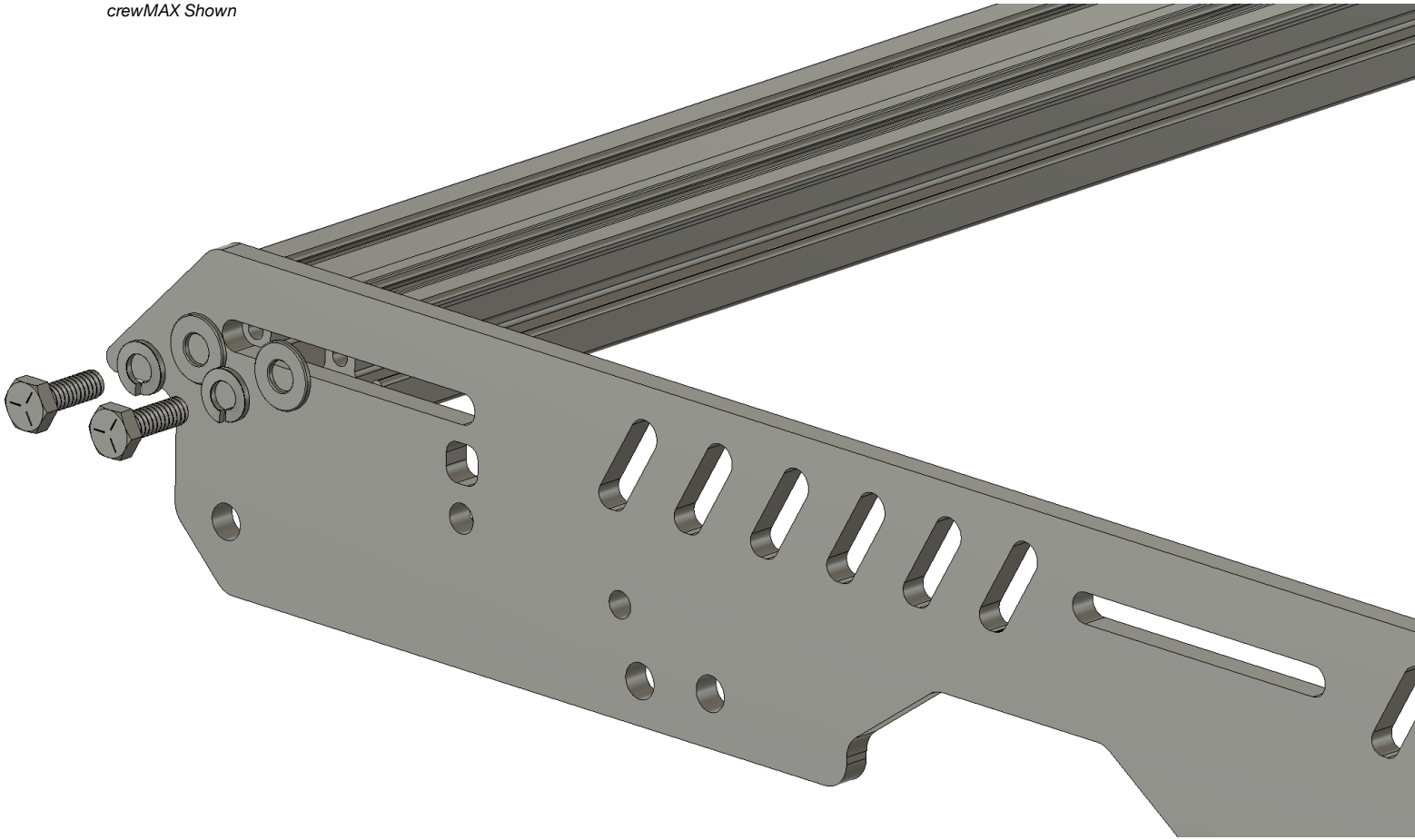


Double Cab grooveTEK

PN 1003 / 1004

- 6 cross bars
- Front foot attachment point indicated in **ORANGE**.
- Rear foot attachment point indicated in **PINK**.
- Mounting foot locations allow vertical height adjustment to dial in rack fitment to vehicle and will also allow the feet to pivot to match roof profile.

Rack Assembly
crewMAX/Double Cab
crewMAX Shown



Front and Rear Cross Bar

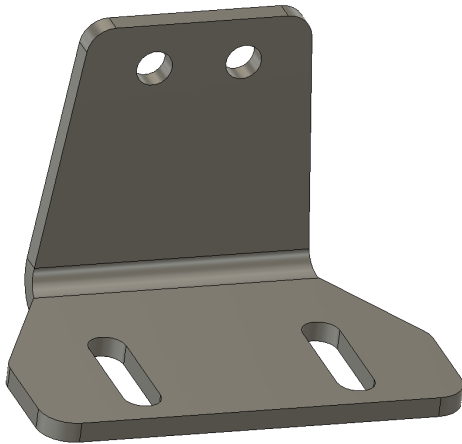
All of the cross bars in your kit are the same length and can be used at any location available inside the rack body. Your cross bars will attach to your grooveTEK. When you install your front and rear cross bar you want to make sure that they are parallel (even) on both sides of the rack to keep the rack assembly square.

Hardware Bag 8001.1

Tools Required: 7/16 wrench

- Install the front and rear cross bar as shown using the hardware in bag 8001.1 making sure that the cross bars are placed equally on the driver and passenger side of the grooveTEK.
- Fully tighten the hardware (3 ftLB) to keep the rack square. You can always adjust these into different locations after installation is completed.

Rack Assembly
crewMAX/Double Cab
crewMAX Shown



Front Feet
PN 1302

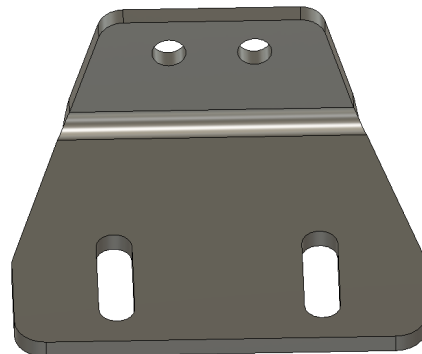
The front feet are noticeably taller than the rear. The 1302 feet will be used in the front locations (page 4) on both sides of the rack assembly.

The feet attach to the grooveTEK.

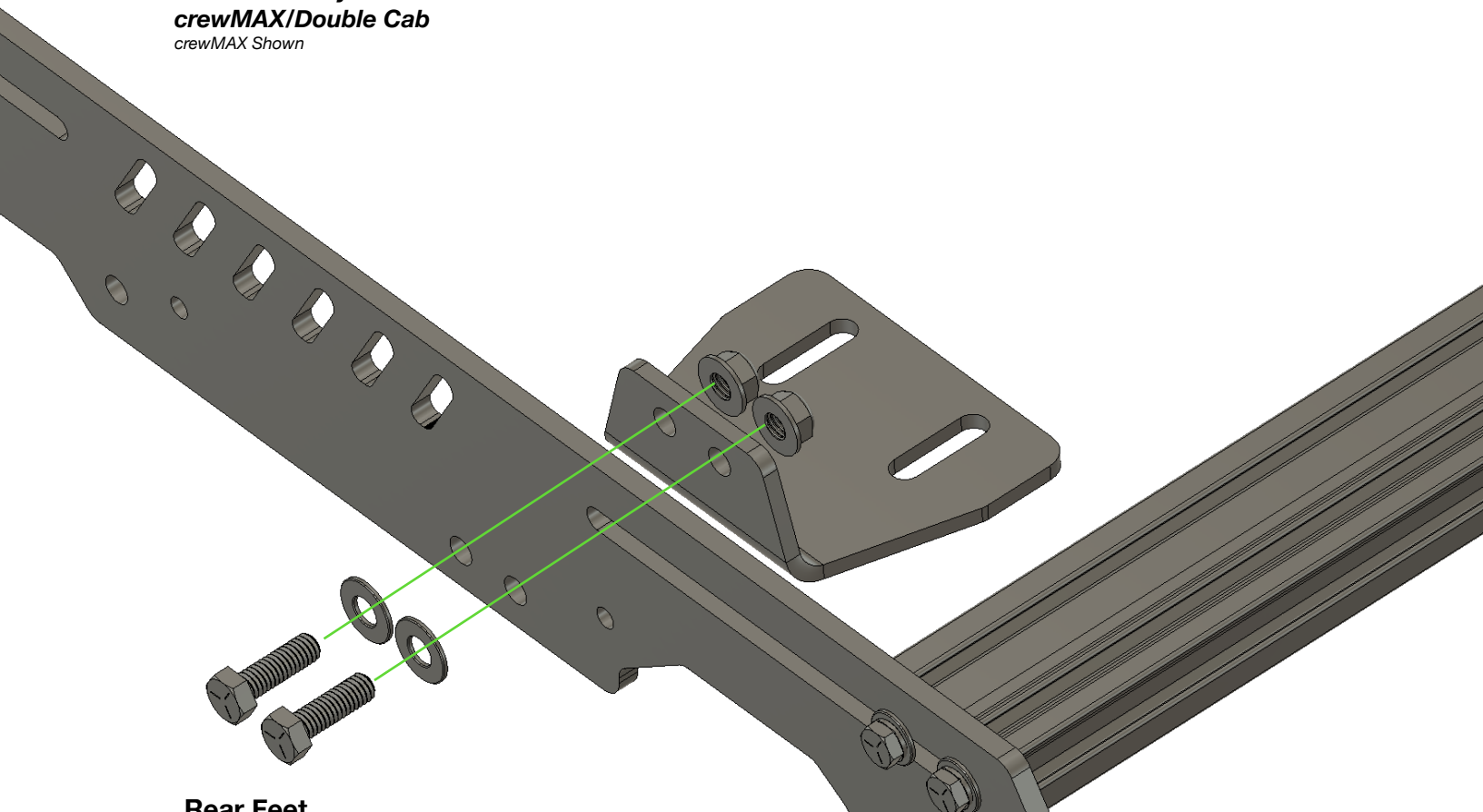
Rear Feet
PN 1303

The rear feet are noticeably shorter than the front. The 1303 feet will be used in the front locations (page 4) on both sides of the rack assembly.

The feet attach to the grooveTEK.



Rack Assembly
crewMAX/Double Cab
crewMAX Shown



Rear Feet

The shorter feet (1303) will attach to the grooveTEK just in front of the scenePOD clearance notch towards the rear of the part.

Hardware Bag 8001.4

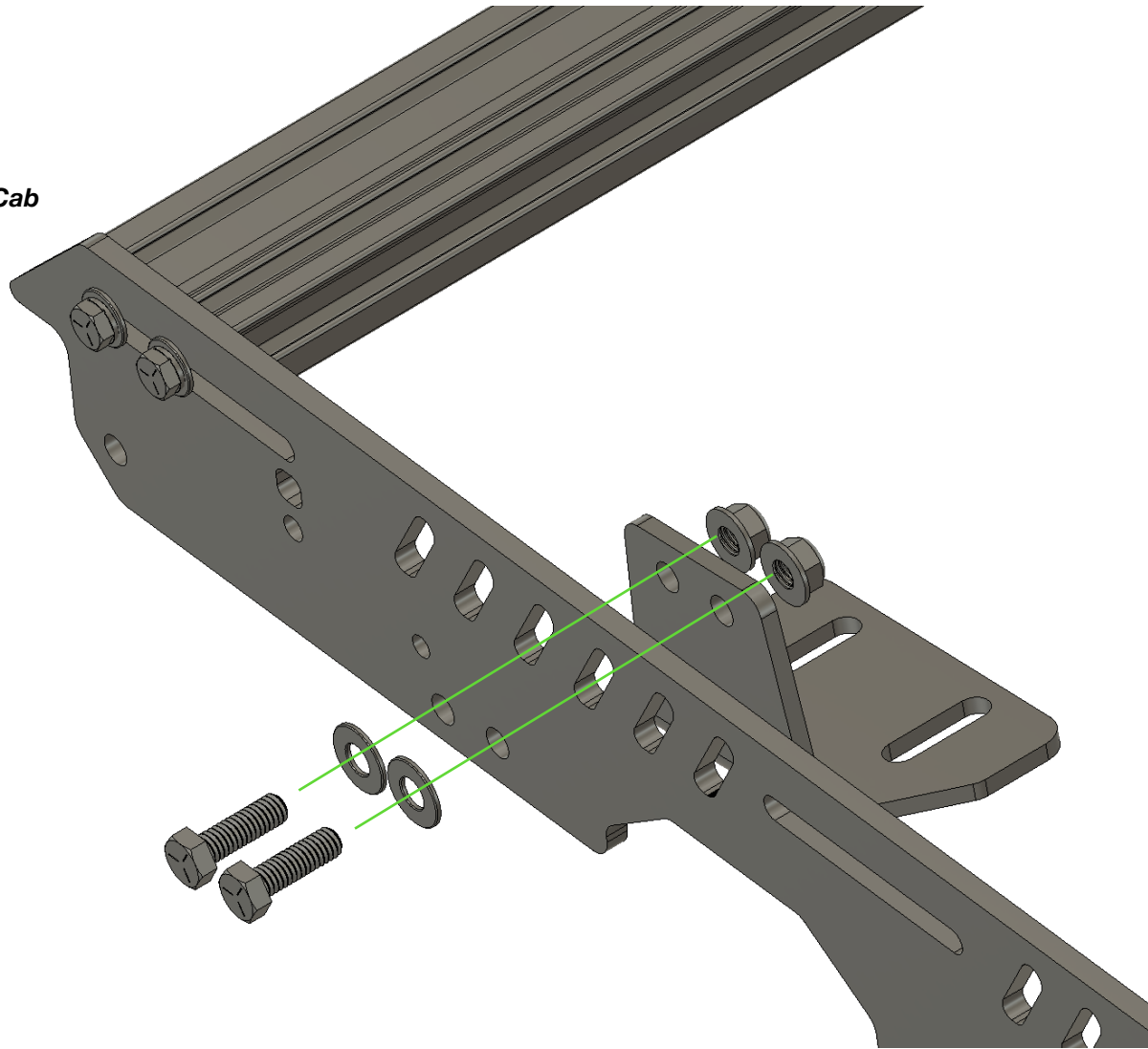
Tools Required: 1/2" wrench (2X)

- Align the rear feet as shown with the foot flange (bent part) touching the inside of the grooveTEK.
- Using the hardware from bag 8001.4 assemble as shown. You do not need to use washers on the inside (touching the feet) as you are provided with nylon locking flange nuts that have a washer sort of built into them.
- Fully tighten (8 ftLB) the hardware using a pair of 1/2" wrenches.

For Tundra Double Cab Racks:

- Align the hardware to the slots in your grooveTEK (Page 4) and tighten the hardware enough that you can still move and articulate the foot just a little. They need to be loose enough that you can get them dialed in to match the contour of the roof after installation.

Rack Assembly
crewMAX/Double Cab
crewMAX Shown



Front Feet

The taller feet (1302) will attach to the grooveTEK just in front of the scenePOD clearance notch towards the front of the part.

Hardware Bag 8001.4

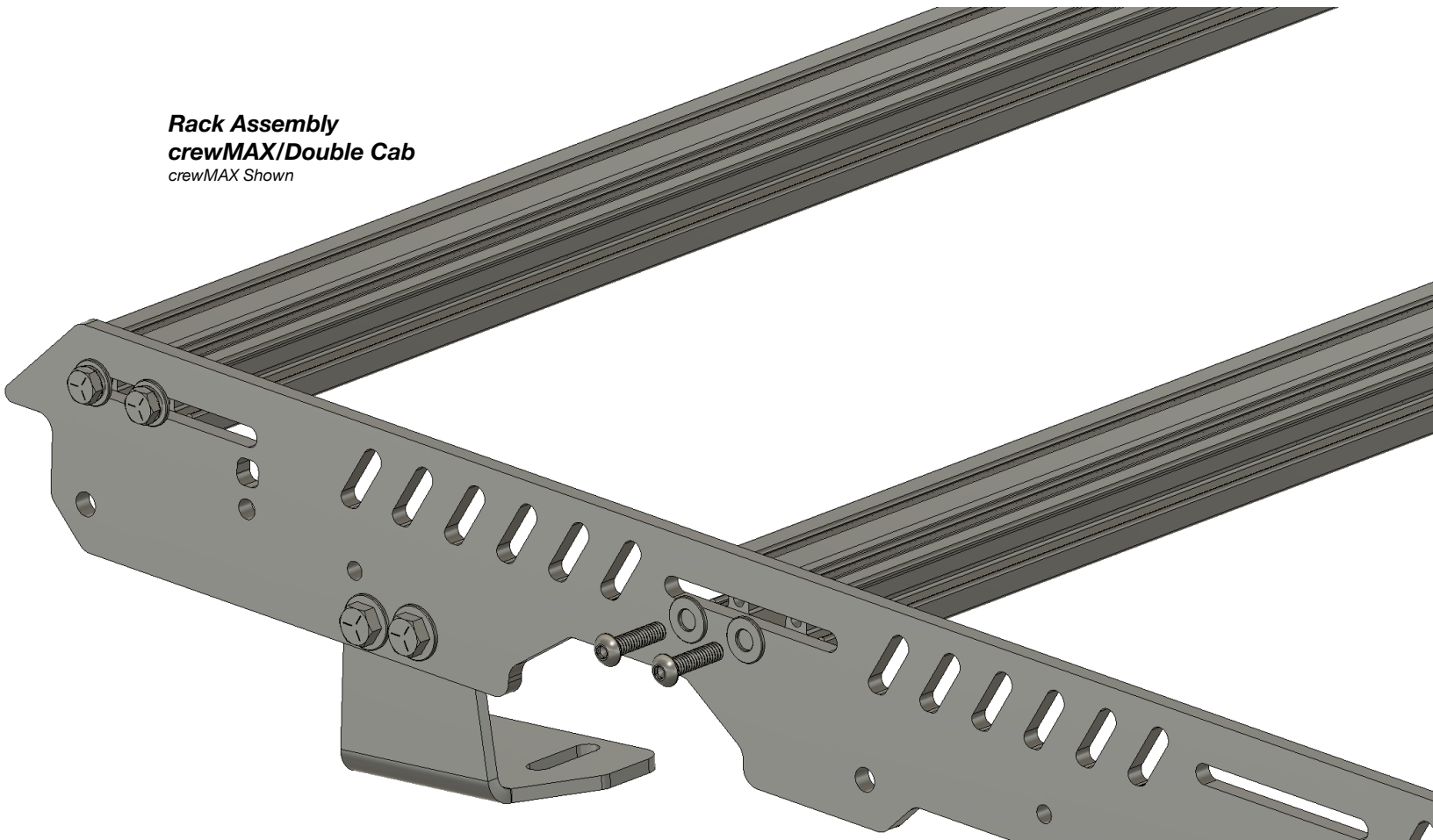
Tools Required: 1/2" wrench (2X)

- Align the rear feet as shown with the foot flange (bent part) touching the inside of the grooveTEK.
- Using the hardware from bag 8001.4 assemble as shown. You do not need to use washers on the inside (touching the feet) as you are provided with nylon locking flange nuts that have a washer sort of built into them.
- Fully tighten (8 ftLB) the hardware using a pair of 1/2" wrenches.

For Tundra Double Cab Racks:

- Align the hardware to the slots in your grooveTEK (Page 4) and tighten the hardware enough that you can still move and articulate the foot just a little. They need to be loose enough that you can get them dialed in to match the contour of the roof after installation.

Rack Assembly
crewMAX/Double Cab
crewMAX Shown



All Other Cross Bars *Apply the VC3 compound to these bolts and allow to air dry.*

The rest of your cross bars will align to the slots placed through the middle area of your grooveTEK. You have some adjustment within in each slot just please make sure that you place them evenly on both sides to keep the rack square.

Hardware Bag 8001.2

Tools Required: 5/32 Allen wrench

- Install a cross bar into each open slots and adjust them to be the same on both sides.
- Using the hardware from bag 8001.2 assemble as shown and fully tighten (3 ftLB) with a 5/32 Allen wrench.
- You will have five cross bars in addition to the front and rear for the crewMAX roof rack.

For Tundra Double Cab Racks:

- You will have four cross bars in addition to the front and rear for the Double Cab roof rack.

These cross bars can be adjusted at any time after installation is complete to assist in lining up with gear.

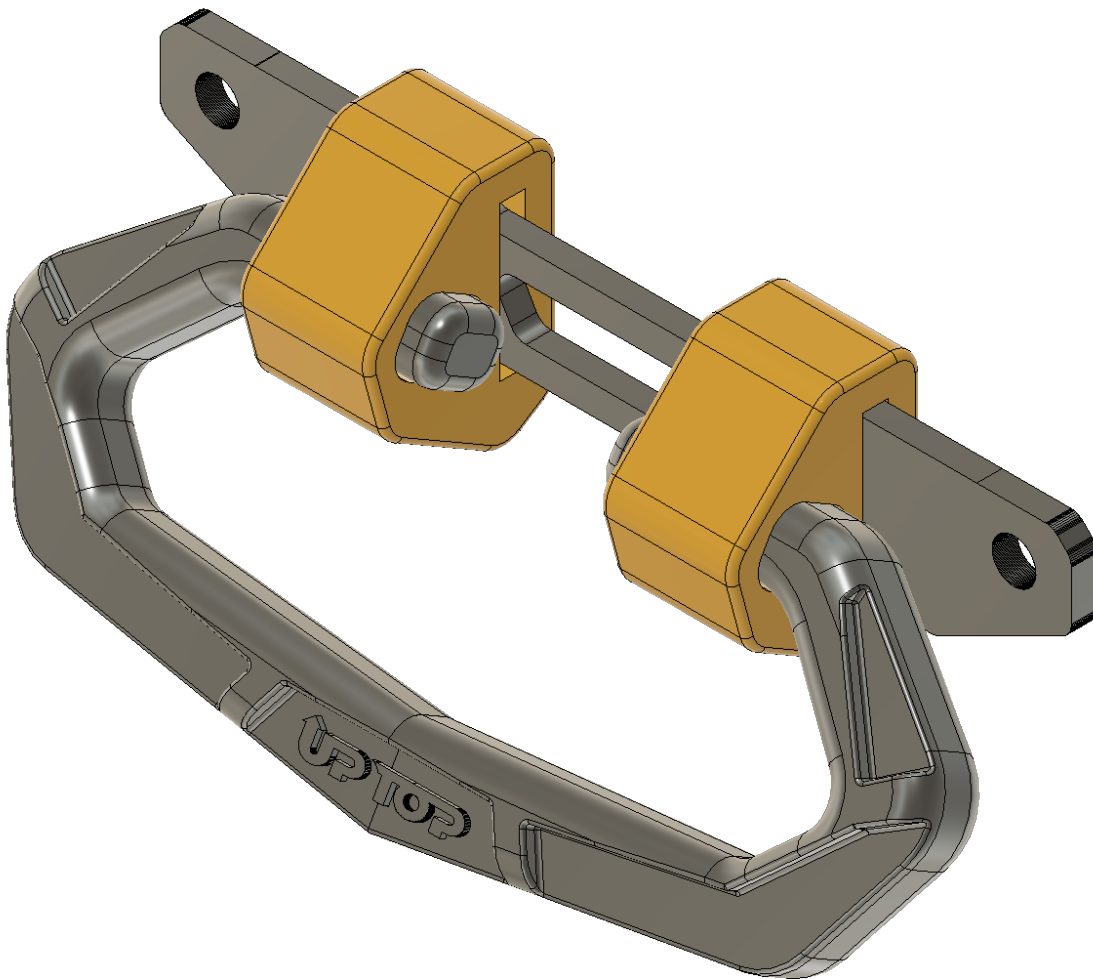
Rack Assembly
crewMAX/Double Cab
crewMAX Shown

Before you can install your armor you will need to assemble your grab handles so that they can be put in place to secure the armor to the grooveTEK in the middle area of the rack.

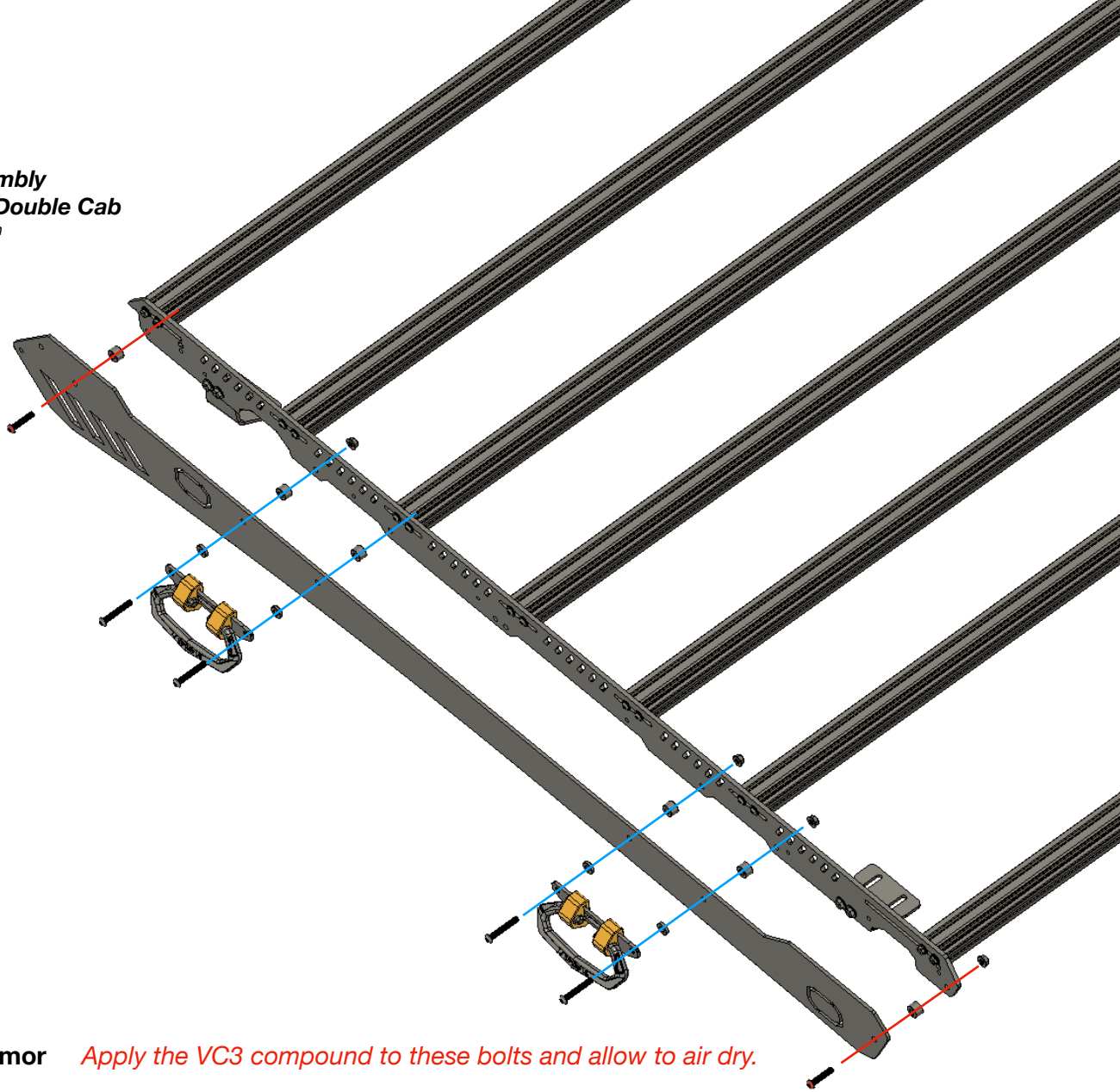
Please refer to the installation guide for the upTOP Grab Handle 2.0 and assemble all four handles prior to proceeding to the next step.

You can find that guide [here](#).

If you are working off printed instructions please go to our website. Under the “Info” tab select “Installation Instructions” and go to the link titled “Grab Handles v2.0” for a complete guide on how to assemble the included grab handles.



Rack Assembly
crewMAX/Double Cab
crewMAX Shown



Side Armor *Apply the VC3 compound to these bolts and allow to air dry.*

If you are putting scenePODS/rock lights in your rack you should trim the knockouts from your armor prior to installation.

Hardware Bag(s) 8001.5 and 8001.6

Tools Required: 3/16 Allen wrench and 1/2 wrench

- The longer (1/2"/12mm) spacers will be placed between the armor and grooveTEK to create a void that you can install wiring into. Align and use hardware bag 80001.5 to attach the armor to the grooveTEK. Fully tighten (5 ftLB) with a 3/16 Allen wrench and 1/2 wrench.
- The shorter (3/16/5mm) spacers will be placed between your handle lace plates and the outside of the armor. Align and use hardware bag 8001.6 to attach the handles through the armor and grooveTEK. Fully tighten (5 ftLB) with a 3/16 Allen wrench and 1/2 wrench.

NOTE

If your grooveTEK has factory installed rivet nuts (brass threaded bits) you will install your hardware directly into those rivet nuts and will not use the locking flange nuts. In cases where your grooveTEK has rivet nuts your hardware will be metric and you will use a 5mm Allen wrench.

Wind Screen
crewMAX/Double Cab
crewMAX Shown

Depending on selections made during your order the wind screen that ships with your roof rack might have additional hardware and brackets for attaching various lighting options.

This portion of the guide covers how to mount your wind screen into your roof rack. If you are installing lighting please check out our “Lighting and Electrical” guide found [here](#).

If you are using a printed version of this install guide please visit our website and access the “info” tab. Select installation instructions, and choose “Wind Screen Lighting Guide” for an up to date guide on how to install different types of lighting into your upTOP roof rack.

About your wind screen

We’ve spent a lot of time refining our wind screen designs over the years to make them as quiet as possible while still giving you the options for different styles of lighting for your rig. It’s important to understand that when you are putting a roof rack on a vehicle you will get an increase in wind noise, even if it is just a little bit.

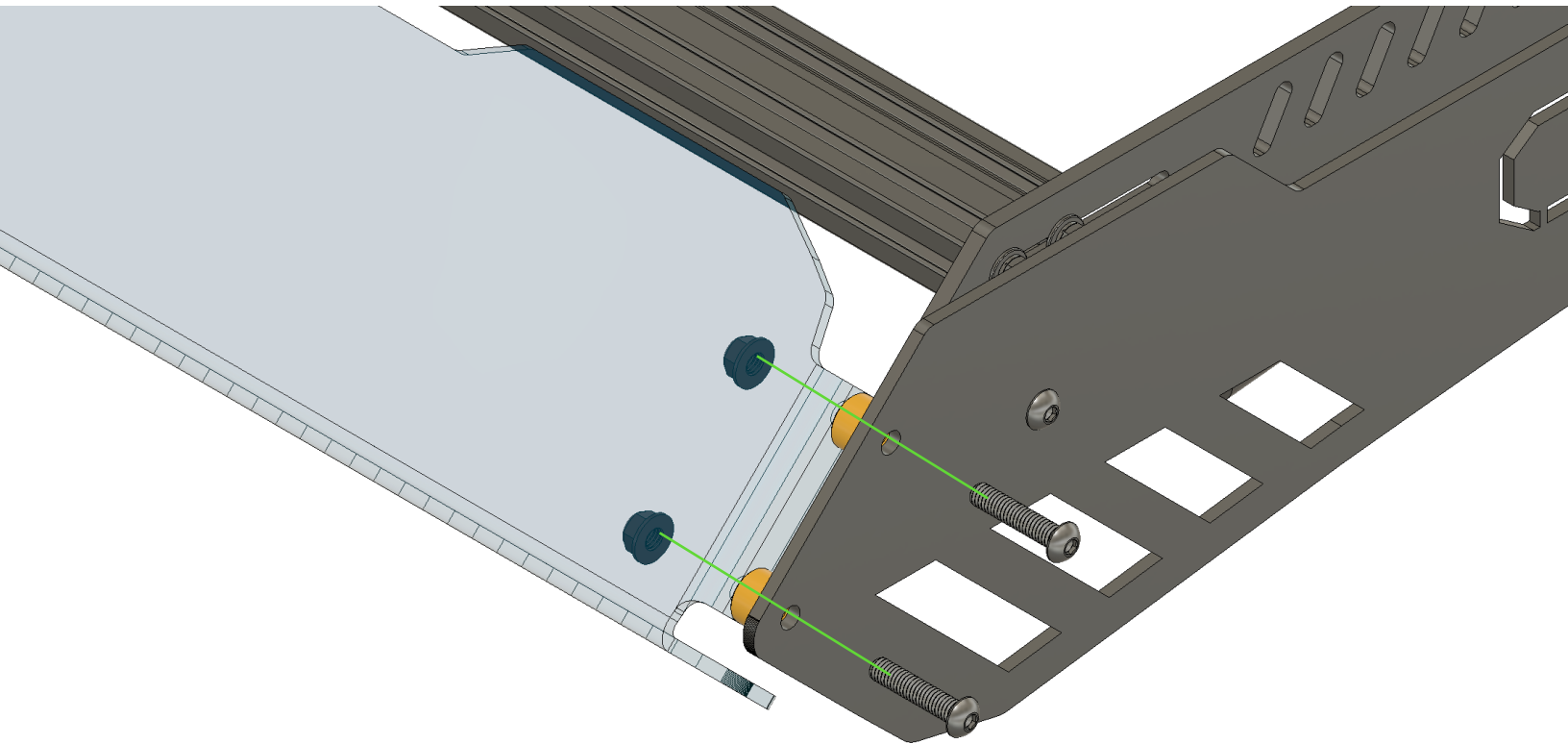
As quiet as they can be most of the time if you find yourself driving into the wind or catch a good cross wind you can pick up some added noise. Usually the added noise is kept to an acceptable level easily overcome with a little radio volume.

Things that affect the amount of wind noise produced by a roof rack include:

- *Lighting options installed at the front of the roof rack.*
- *Different pieces of kit like storage boxes, recovery boards, and awnings, etc...*
- *Misalignment of the roof rack installed on the vehicle. You need to make sure it is centered and square with the vehicle.*

Your wind screen can be easily upgraded/replaced in the future if you want to add or change up your lighting situation as long as the wind screen is still a standard production item. Contact customer support at any time and they can assist you with getting the right parts for your roof rack.

Wind Screen
crewMAX/Double Cab
crewMAX Shown



Wind Screen

The wind screen will attach to your armor panels on each side of the roof rack.

Hardware Bag 8001.3

Tools Required: 3/16 Allen wrench, 1/2 wrench

- You will place a spacer at each bolt location between the bent mounting flange on your wind screen and the inside of your armor panels.
- Align the hardware as shown with the bolts going through the armor and spacers. The locking flange nuts will go on the inside of your wind screen.
- Fully tighten (5 ftLB) the hardware at all locations with a 3/16 Allen wrench and 1/2 wrench

The windscreen has been changed to transparent to show you the inside area where the flange nuts will be installed.

Vehicle Preparation crewMAX/Double Cab

Prior to placing the rack on the vehicle and position it to mark your mounting locations you need to get the vehicle ready.

- We strongly suggest using masking tape as a protective barrier on the exterior of the vehicle on the exposed (painted) areas of your truck above your doors. We use 3-4 layers to make a nice landing pad for the roof rack so we can place the rack and rest it on the taped surfaces without damaging the vehicle finish.
- You need to remove the black rubber factory drip rail trim to access the mounting areas for the roof rack. **DO NOT** drill through the black rubber trim pieces. You can modify, trim, or punch the gaskets if you would like to reinstall them but we don't do that here very often. They actually serve very little purpose aside from cosmetics without a roof rack installed and do nothing at all to keep water/moisture out of the cabin of your truck.

Before you throw the rack on the roof you need to know a couple of things:

- You cannot lift this assembled rack and place it on the vehicle yourself. No matter how many gym selfies you post a week you will not have what it takes to hoist this thing up in the air and sit it down on the truck without doing some damage to the vehicle. Enlist a couple of friends to help you with the heavy lifting.
- You're going to need a marker, a cordless drill, several drill bits, and a tape measure to do this properly. Do yourself a favor and gather the tools/materials first so you have them at hand when you need them.
- It is possible to sit the rack on the roof and get it into position to mark the holes and then move the rack around so that you can drill and install the mounting points without taking the roof rack back off the vehicle. It's possible, it's not easy. We suggest that you place the rack, mark the mounting locations, and then remove the rack so that you have full access to the drip rails for drilling and installing the mounting hardware.

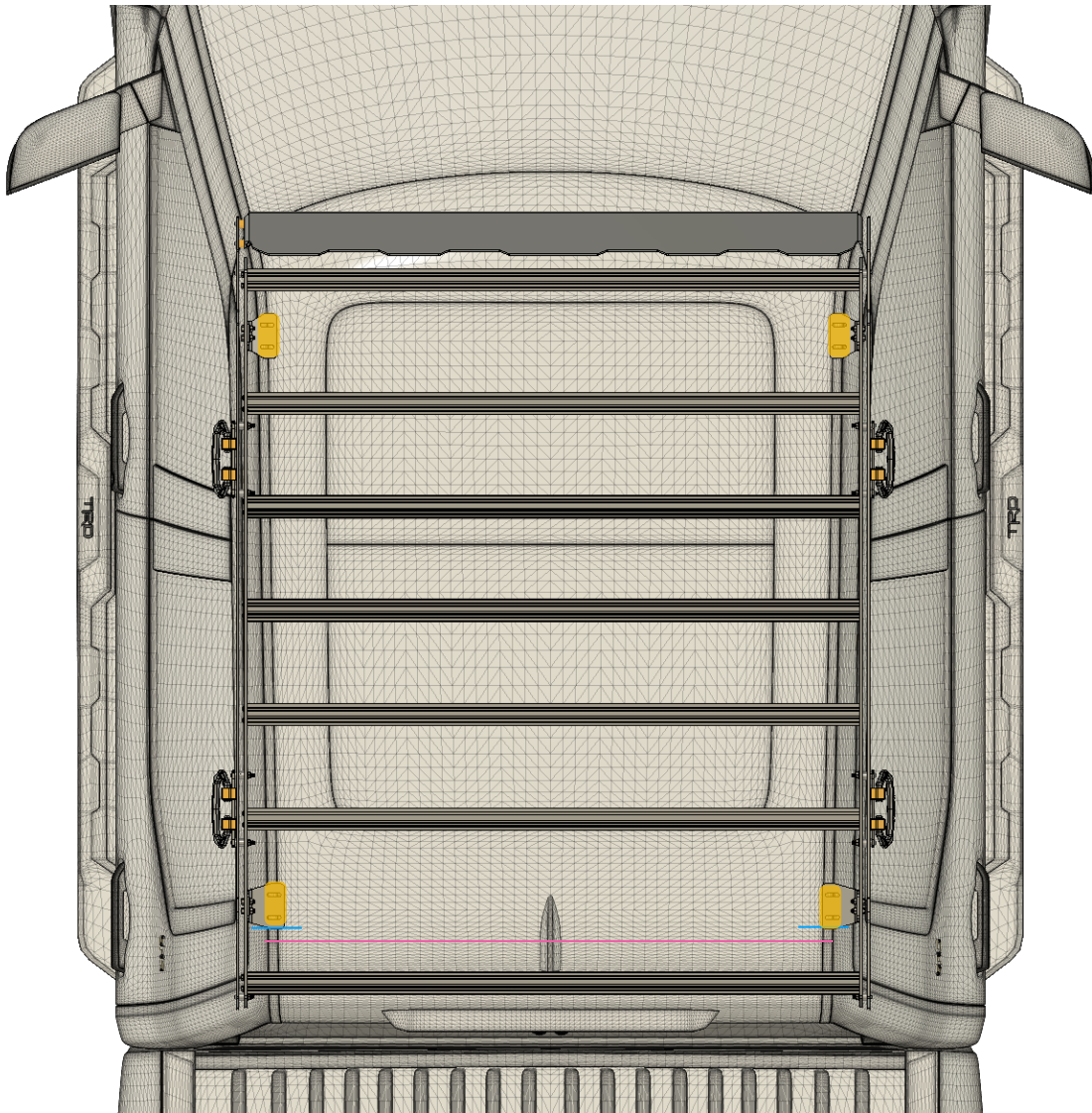
Why didn't you just give us some measurements that we could use to locate the hole locations?

Because if you measure ten different Tundra trucks you will get ten different results based on a lack of factory reference points that could be used to blind drill and install your mounting hardware. This installation requires a bit of precision and you have to do the work to make sure the rack is exactly where it is supposed to be.

VERY CAREFULLY

With help, lift and place the roof rack onto the vehicle taking care not to damage the exterior of the vehicle with the roof rack. Gently sit the rack into place and see the diagram on the next page for locating the rack properly on the vehicle to mark the drilling locations so that you can install your mounting hardware.

Mounting Locations
crewMAX/Double Cab
crewMAX Shown



Rack Placement

Note Some vehicles may have factory antenna located at front of vehicle instead of rear. This will not affect the installation of the roof rack.

The **PINK** line represents the factory seam in the rubber drip rail trim. To place the rack start by measuring approximately 2' from the back of the rear foot to that seam, indicated with the **BLUE** line(s).

- Use this as a base line for placing the rack on the roof of the vehicle taking care to make sure that the rack is centered on the vehicle and that the slots in your mounting feet fall over the drip rail areas on both sides of the vehicle.
- If your vehicle is equipped with a rear mounted antenna please ensure that your rear cross bar falls behind the antenna and has adequate clearance.
- Mark the locations for drilling as indicated above in **ORANGE**. Each foot will have two (2) holes marked.
- Once the hole/drill locations are marked you can remove the roof rack from the vehicle.

Drilling

Your installation kit includes the proper sized drill bit for the mounting hardware used to attach the roof rack to your vehicle however we strongly encourage you to start with smaller bits and work your way up to the final size (23/64) drill bit. You can also use a drilling lubricant to keep the bits cooler which will prevent them from wearing out before you have finished.

Drilling lubricants can be specialized fluids or something as simple as WD40 or baby shampoo.

As mentioned on page 2 we suggest removing the vehicle headliner prior to performing any drill operation on the 2G Tundra crewMAX and Double Cab truck to ensure that you can gain clearance around the inflatable restraint system wiring and air bag components to avoid damaging during this step. Proceed at your own risk and please understand that we will not be held liable for damages to the vehicle resulting from failure to remove the vehicle head liner and provide adequate clearance around these factory installed safety systems.

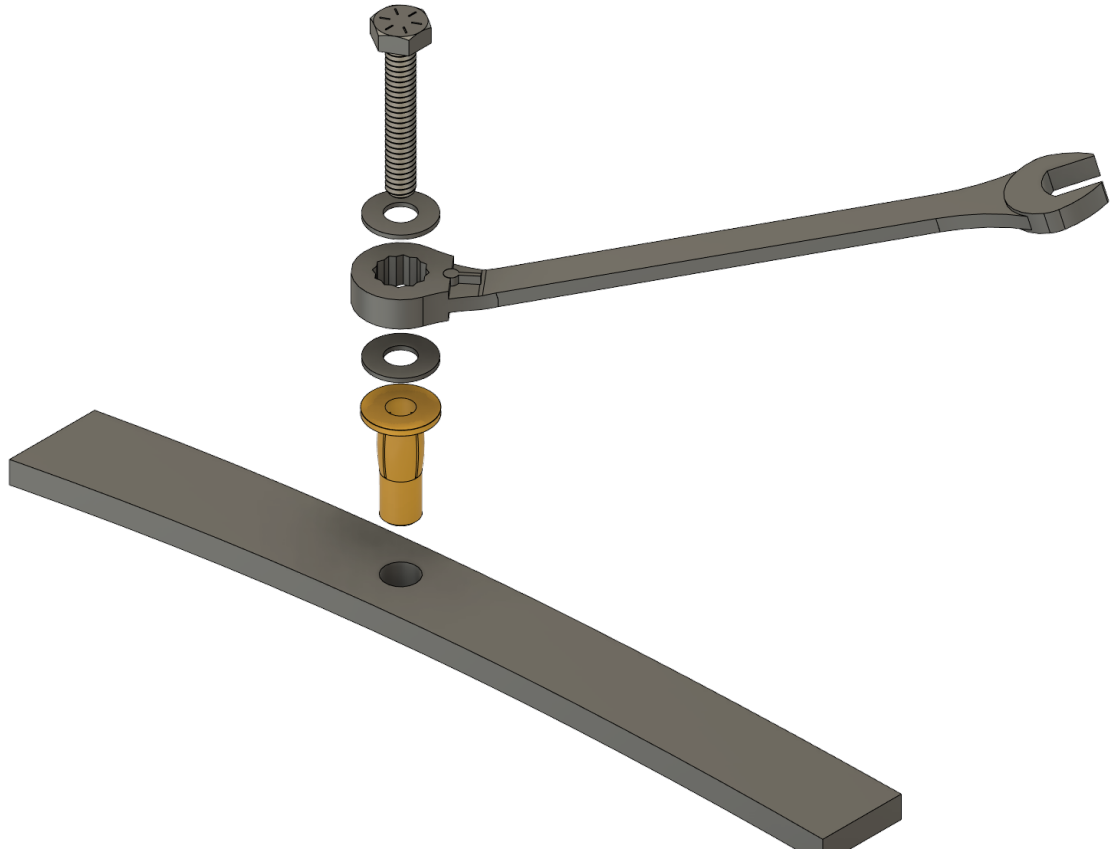
Using smaller bits removes less material at a time and will make this process much easier for you to complete. We suggest the following:

- Start with an 1/8" Pilot bit and drill all eight (8) mounting holes making sure you are **CENTERED** in the drip rail at each location.
- Once you have each location piloted, move up to a 1/4" drill bit and repeat the process at each location.
- After the 1/4" drill bit you can graduate to a 5/16" drill bit and repeat at all eight (8) locations.
- After 5/16 you should be able to use the included 23/64" drill bit to get to the final required size for each location.

After you have completed drilling all eight (8) mounting locations very carefully remove the debris (metal shavings and lubricant) from the vehicle. We use a small magnet to collect the metal shavings and 50/50 alcohol/water mix to remove the lubricant. Cleaning these areas will ensure proper adhesion of your sealant.

After you have drilled all eight (8) locations you can proceed with the installation of the provided fasteners that will be used to attach the roof rack to your vehicle.

Installing plusNUTS

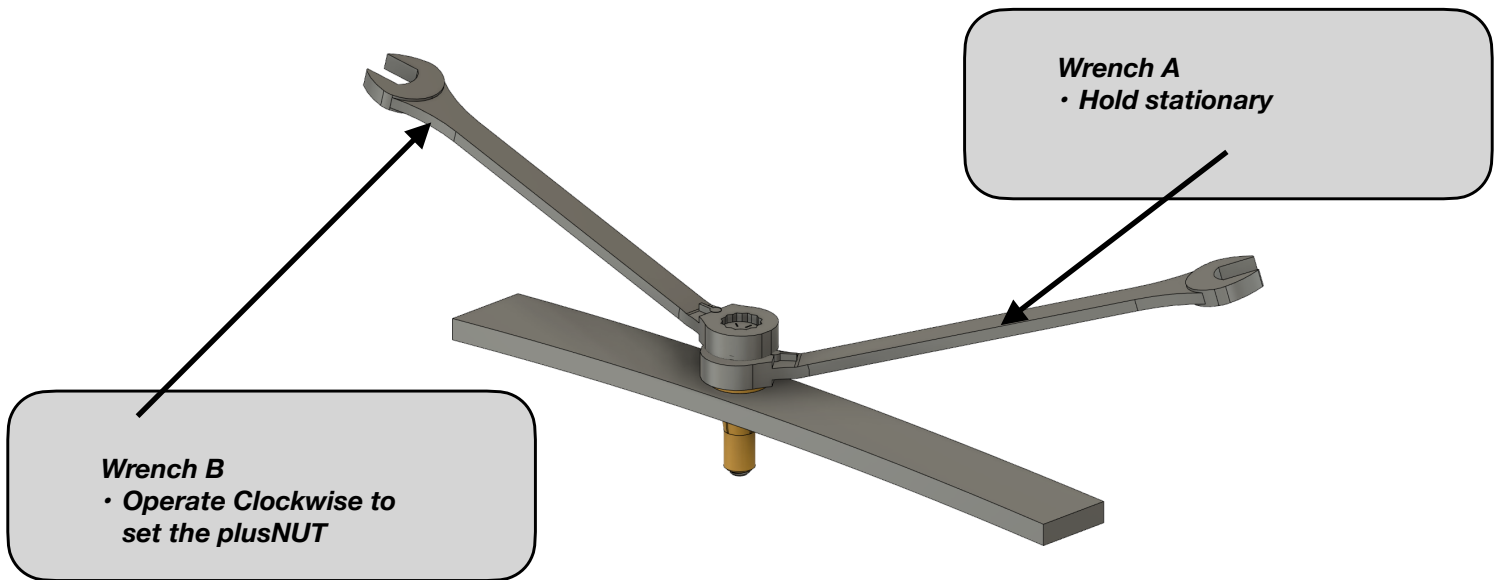


plusNUT Installation Hardware

To properly install a plusNUT with a pair of wrenches you will need to sandwich one of your 10mm wrenches between the two washers provided in your drill kit. Slide the included bolt through the washers/wrench head and thread the plusNUT onto the bolt until it is tight.

The included bolt/washers are reusable and you can use them to install all of the plusNUTS required for mounting your roof rack.

- Assemble as shown and push a plusNUT into one of the holes you drilled. The fit should be snug and if you have trouble getting the plusNUT into the hole you can gently tamp it into place with a small rubber mallet.



plusNUT Installation

- As you operate wrench B counter clock wise hold wrench A stationary.
- This motion will “draw” up the plusNUT into an “X” beneath the surface of your drip rail and bite into the metal underneath creating a very sturdy anchor point for the mounting hardware of your roof rack.
- This motion will NOT be visible as it is taking place beneath the roof of your vehicle
- Continue to tighten the plusNUT until it gets noticeably tougher to continue turning.
- Reverse wrench A to remove the threading bolt completely.
- Collect the bolt, washers, and wrench B and continue the process until all eight (8) locations indexed in **ORANGE** have plusNUTS installed into location.
- Hand thread your roof rack mounting hardware into the plusNUTS ONE AT A TIME BY HAND to ensure that the threads are set and undamaged for installation.
- If you over torque the plusNUT it can twist causing thread misalignment.
- If you under torque the plusNUT it could spin during hardware installation causing the bolt to become stuck in perpetual free spin.
- If you encounter resistance when installing the hardware by hand visually inspect the threaded portion inside the plusNUT and verify that the threaded channel is in line (centered) with the original installation angle of the plusNUT.
- If you need to repair the threads of the provided plusNUTS you will need to source a thread tap (Not Included) that is: **M6x1.00 Metric**

Sealant

Choosing the right sealant is as easy as selecting a silicone based product engineered for outdoor use. The product will NOT be visible after installation so color is not as critical as quality. We typically use an exterior grade RTV sealant that is readily available at most hardware/auto parts stores. If you have specific questions about sealant please email support@uptopoverland.com and reference your order number in the subject line of the email.

- Dispense sealant into and around each plusNUT that you installed making sure that you cover the plusNUT entirely on the surface. Build the sealant up about 1/4" to make a puddle over each location.

Spacers

Your kit includes aluminum spacers intended to level the roof rack against the contour of the vehicle and provide a sturdy, stable platform to help distribute cargo along the entirety of the rack without causing pressure points or over stressing the structure of the vehicle.

For the 2G Tundra crewMAX and Double Cab the included spacers are as follows:

| Vehicle | Location | Spacer Height |
|-----------------------------|-----------------|----------------------|
| 2G Tundra crewMAX | Front | 1.0" |
| 2G Tundra crewMAX | Rear | .875" |
| 2G Tundra Double Cab | Front | 1.0" |
| 2G Tundra Double Cab | Rear | .875" |

- Center and place the spacers as indicated above at the appropriate location on your vehicle. The spacers should be pushed into the sealant puddle and centered over each plusNUT as best you can.
- Do not remove excess sealant from around the base of the spacers.

RACK TO ROOF

For both the crewMAX and Double Cab truck you will receive the same mounting hardware and the same length bolts will be used at each location. You will only be using eight (8) sets, so you will have spares/left over hardware.

Hardware Bag ID 7000.4

| PN# | Qty | Description | Bag ID | Function |
|-------------|-----|-------------------------|--------|--------------|
| 4397506055 | 10 | M6x1.00 55mm SCHS SS | 7000.4 | Rack to Roof |
| 4397306025 | 10 | 6x25mm Fender Washer SS | 7000.4 | Rack to Roof |
| 43971706000 | 10 | 6mm Lock Washer SS | 7000.4 | Rack to Roof |

Mounting Hardware

- Each location will use a bolt, lock washer, and flat washer.
- Use a 5mm Allen wrench to start BY HAND the hardware at each location. DO NOT fully tighten any hardware yet.
- If you encounter any resistance when installing the hardware you need to check and repair the threads in your plusNUTS with an M6x1.00 tap. DO NOT force the hardware. You will cross thread your hardware and spin you plusNUT. I won't even go into what it takes to fix that if it happens. Just don't do it. Each bolt should thread easily and freely into the plusNUT.
- Once you have all eight (8) mounting locations started visually inspect the rack and ensure that it is centered on the vehicle taking advantage of the slots in your mounting feet to adjust as needed.
- If you are satisfied with the location you can fully tighten (5 ftLB) your rack to roof hardware at all locations.
- Check for adequate clearance between the roof rack and the vehicle exterior at the wind screen as well as the rack body sides.
- At this time you should inspect and fully tighten any additional hardware used for rack assembly.
- Installation complete. Assemble the vehicle interior, install any additional gear, and enjoy.

Product Care

Maintain and wash the roof rack in the same manner that you care for the exterior of your vehicle being sure not to apply wax or solvents to the powder coated finishes. Routinely inspect roof rack and hardware to ensure that components are in good working order. Repair or replace worn parts as needed.

Contact Information

upTOP Overland
2278 Manatt Court
Unit C11
Castle Rock, Colorado 80104
720.730.6381
support@uptopoverland.com

Do your part. Our company is founded and staffed by outdoor enthusiasts that understand how fragile our planet really is. The most important message that we can impart to you about enjoying our open spaces is to leave them better than you found them. Don't be a dick. Pick up after yourself. Pick up after others that don't and when possible educate them as to why they should. Stay on designated trails, camp sites, and pathways. If you take it with you, bring it back with you. There are no excuses.

Manufacture responsibly. We strive to produce an American made product that will perform as intended for many years and we try very hard to do that with locally sourced materials from other small businesses because relationships matter to us. When absolutely necessary we will import components for our products from other countries and we maintain strict guidelines for the companies we work with to ensure that their employees are treated with dignity and respect.

Lifetime warranty. As over-engineered as some of our products can be eventually something will break. We will repair or replace at our discretion any product found defective due to manufacturing deficiencies. This warranty does not cover abuse, misuse, neglect, ignorance, or damage caused from exceeding the recommended weight loads of the product. This warranty covers only products manufactured or used in the manufacture of upTOP Overland products. Third party products purchased from upTOP Overland are subject to the origin company the product was sourced from.

Content sharing. We love to see all the pictures and videos of our stuff in action on your rig. You can share the content via email and/or social media 24/7 and if we share it with our audience we will credit the photographers and vehicle owners whenever possible.

upTOP Overland is a US based manufacturer of off road products operating out of Colorado. All information contained in this material is the intellectual property of Relic Automotive Design, dBA upTOP Overland. Duplication, alteration, or distribution of this material without express written permission from upTOP Overland is forbidden. Just. Don't.