



2007-2021

Toyota Sequoia

NOTE

Effective January 1, 2023

Lock washers are being phased out of hardware kits. If you do not receive lock washers they are no longer required and you should use VC3 thread compound in place.

Thank you for selecting upTOP™ as the choice for your vehicle. The roof rack designed for your platform requires competency with basic hand tools and assembly procedures. If you are not comfortable or you feel it is above your pay grade you are encouraged to seek professional installation of this product.

TOOLS REQUIRED

- 5/32 Allen wrench
- 5mm Allen wrench
- 6mm allen wrench
- 13mm wrench
- Silicone Sealant
- VibraTITE VC-3 Threadlocker (Included)

The dynamic (moving) weight capacity of your roof rack far exceeds the specifications set forth by Toyota. Please follow manufacturer recommendations for the safe roof load capacity for the Toyota Tacoma. upTOP recommends keeping evenly distributed cargo loads of 175 pounds on the Toyota Sequoia. Static (parked) weight restrictions are limited to 1100 pounds.

You will need adequate floor space to assemble your roof rack prior to installing it to your vehicle. An area 60x110" is recommended for this assembly.

You are encouraged to inspect the contents of your package prior to completing assembly and installation. For any missing/damaged parts email pictures and descriptions to support@uptopoverland.com with your order number as reference in the subject line. A specialist will assist you with the process for field repair or component replacement.

It is important to plan for any wiring that needs to be completed during the course of rack installation. Incorporate these steps into the steps in this guide at points that reduce additional disassembly of the rack while it is installed on the vehicle.

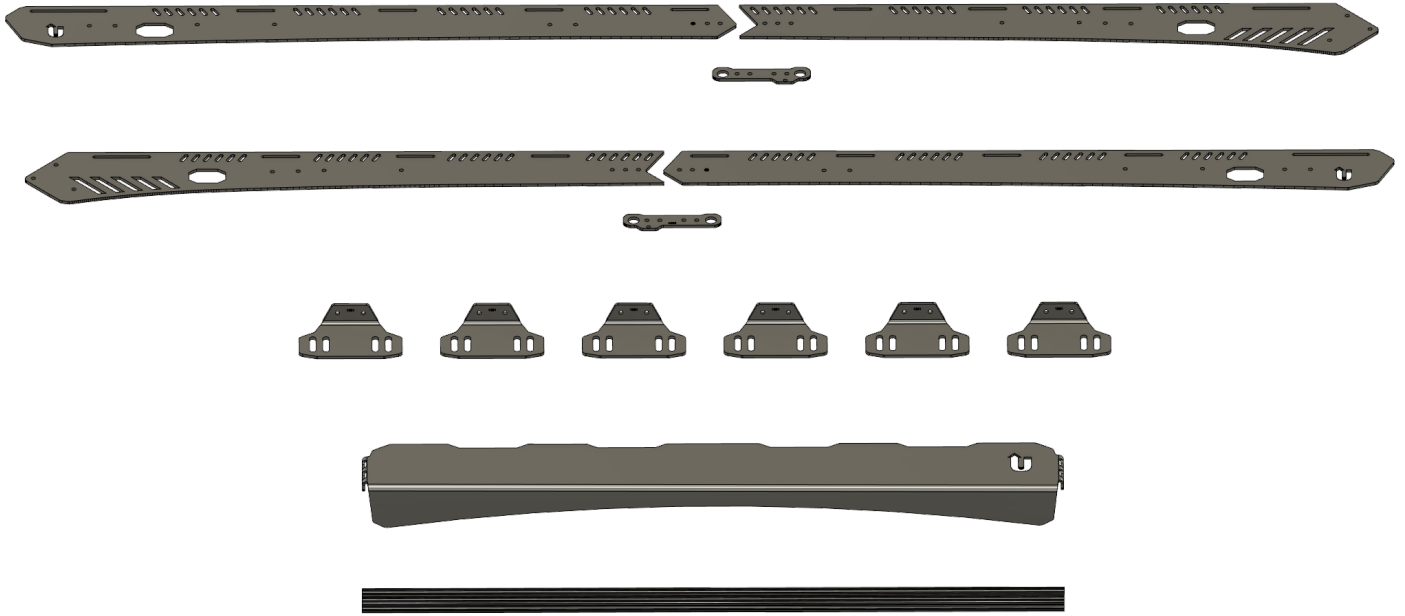


Figure 1
Major Components

Your kit includes the parts as pictured above. The Sequoia rack has a final assembly length of 105". In order to package and ship the rack we have produced a two piece side design that you will need to assemble to the final length before putting together the rest of the rack.

The six(6) feet pictured are designed to work in all locations where your vehicle has factory mounting provisions. Not pictured are two(2) additional pressure feet that will install at the front of the rack to support the forward area of the rack without the need for drilling additional holes. This step is covered later in this guide.

You will need to remove the factory roof rack prior to installing your new roof rack. Due to generational changes in the removal of the factory roof rack additional hand tools not listed on page 1 might be required.

Your kit includes additional hardware for replacing the factory threaded inserts if so required. Older vehicles subjected to weather might have seized or damaged factory inserts that will need to be replaced with the included plusNUT™ hardware kit. If your factory roof rack removes easily and the threads are intact you will not need this bag of hardware.

Our hardware kits are pre-packaged and might include additional hardware not required to complete your installation. No cause for concern.

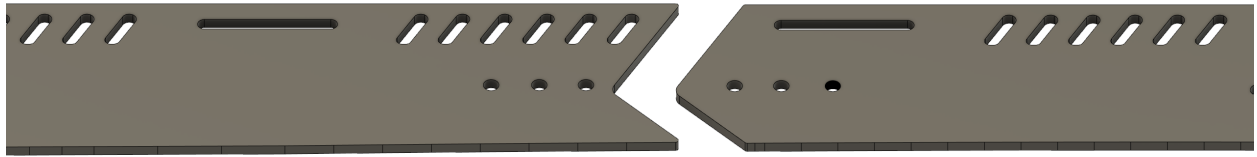


Figure 2
Side Assembly

The front (pictured left) and rear (pictured right) will nest together as indicated above.

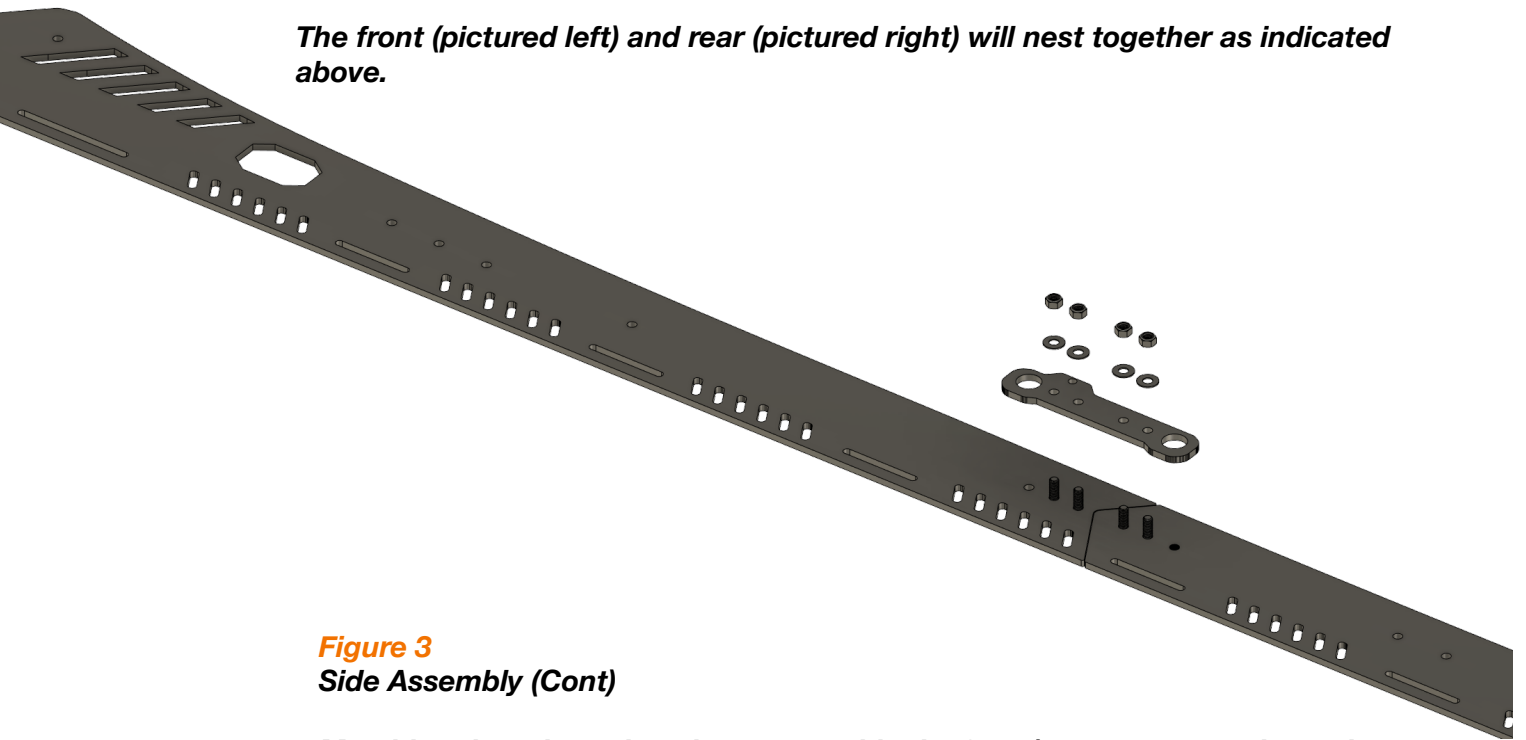


Figure 3
Side Assembly (Cont)

*Matching the orientation above assemble the front/rear parts together using the hardware in the bag labeled "Plate Joiner". The plate joiners install to the **INSIDE** of the roof rack.*

- *Use a 5mm Allen wrench and 13mm wrench to tighten the hardware.*
- *Repeat the process with the remaining two panels to complete the other side.*

NOTE:

If your kit includes black bolts you will use a 3/16" Allen wrench and 1/2" wrench.

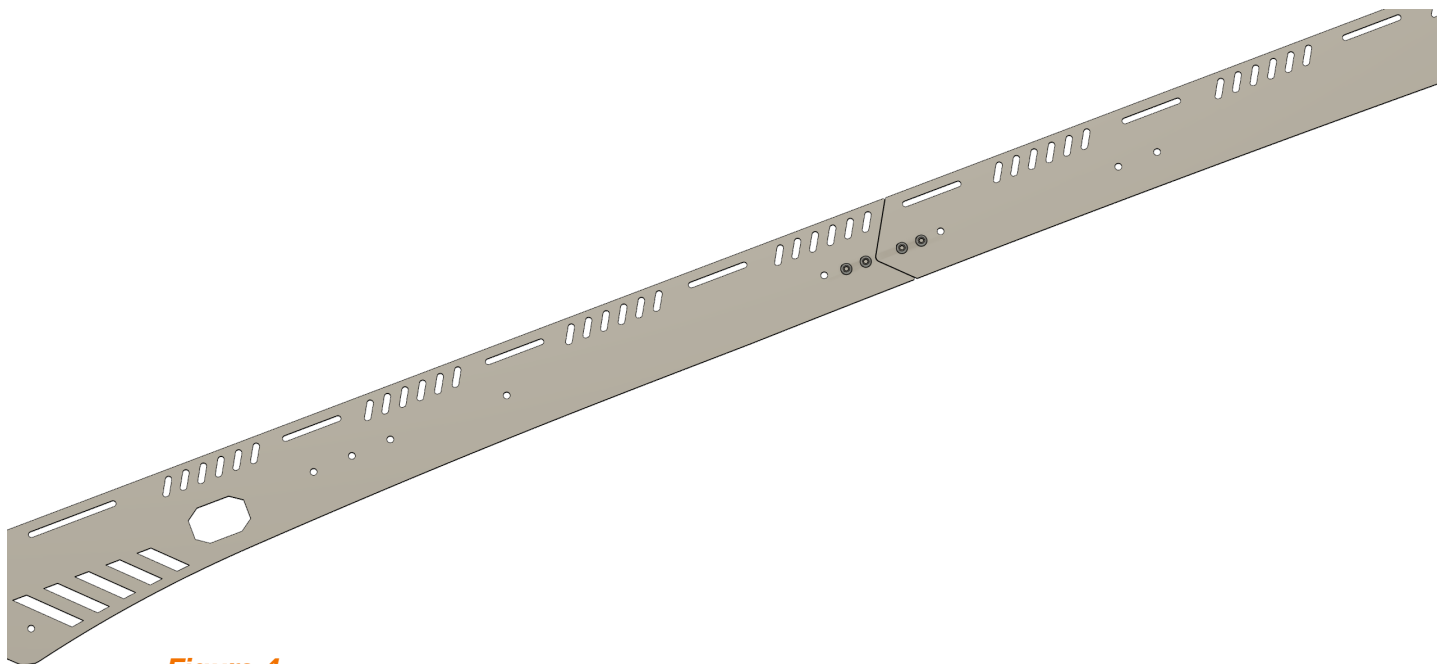


Figure 4
Side Assembly (Cont)

Each assembled side should look like the illustration above. The parts will be tightly nested together to form one continuous side. The remaining two(2) holes on the outside of the plate joiner hardware are for mounting optional grab handles.

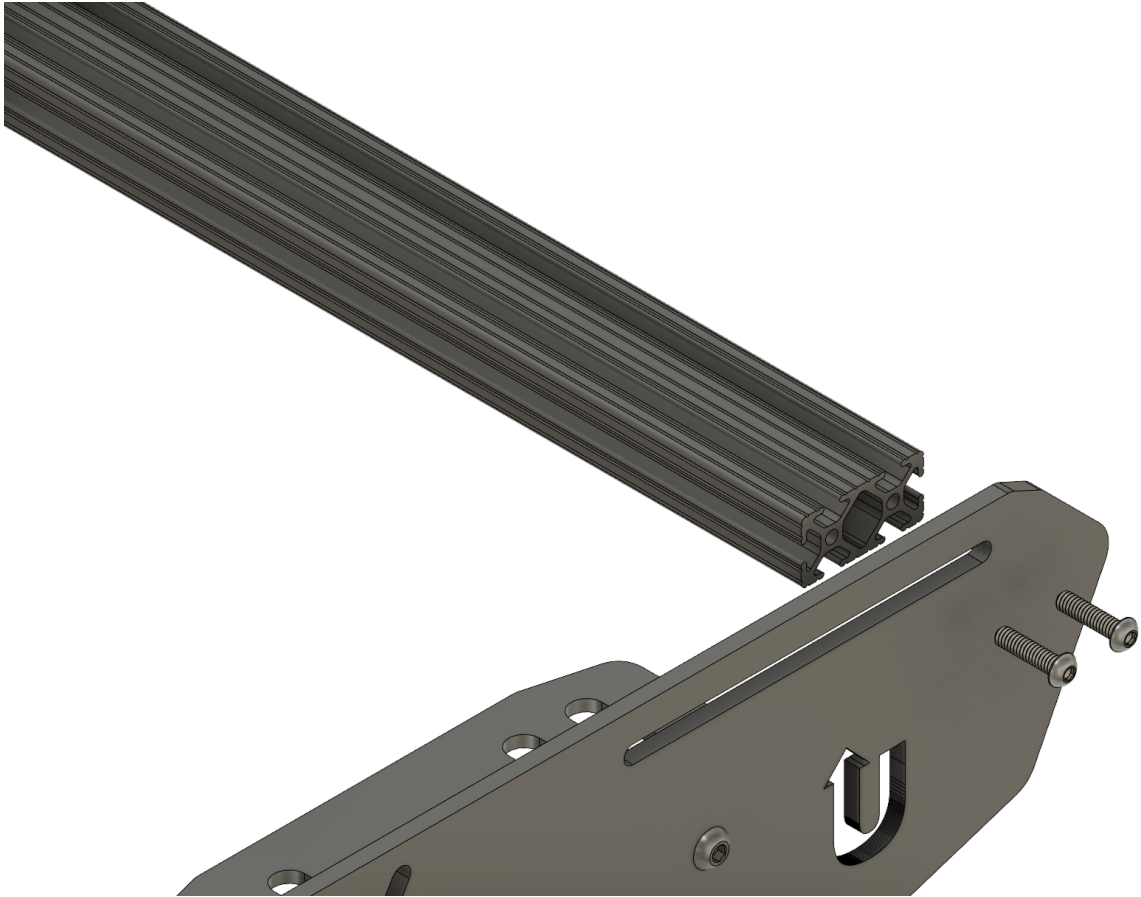


Figure 5
Load Bars

All of the load bars included in your kit are the same and can be installed in any location available along the top of your roof rack sides.

The slots allow for adjustment of the load bars at any time to aide in alignment of various pieces of gear you would mount to the load bars. They can be adjusted as needed.

It is critical that the load bars be installed evenly on the driver and passenger side of the vehicle to keep the rack square.

Using the hardware in the bag labeled “Load Bars”:

- Install the load bars into the slots along the top of the rack into each position available.*
- Use a 5/32” Allen wrench to set the hardware.*

NOTE

We are transitioning away from lock washers used in the load bar hardware kits. If your kit has additional lock washers please install one on each bolt prior to installing them to the load bars. If your kit does not include load bars apply the supplied VC3 thread locker to each of the load bar bolts before installation.

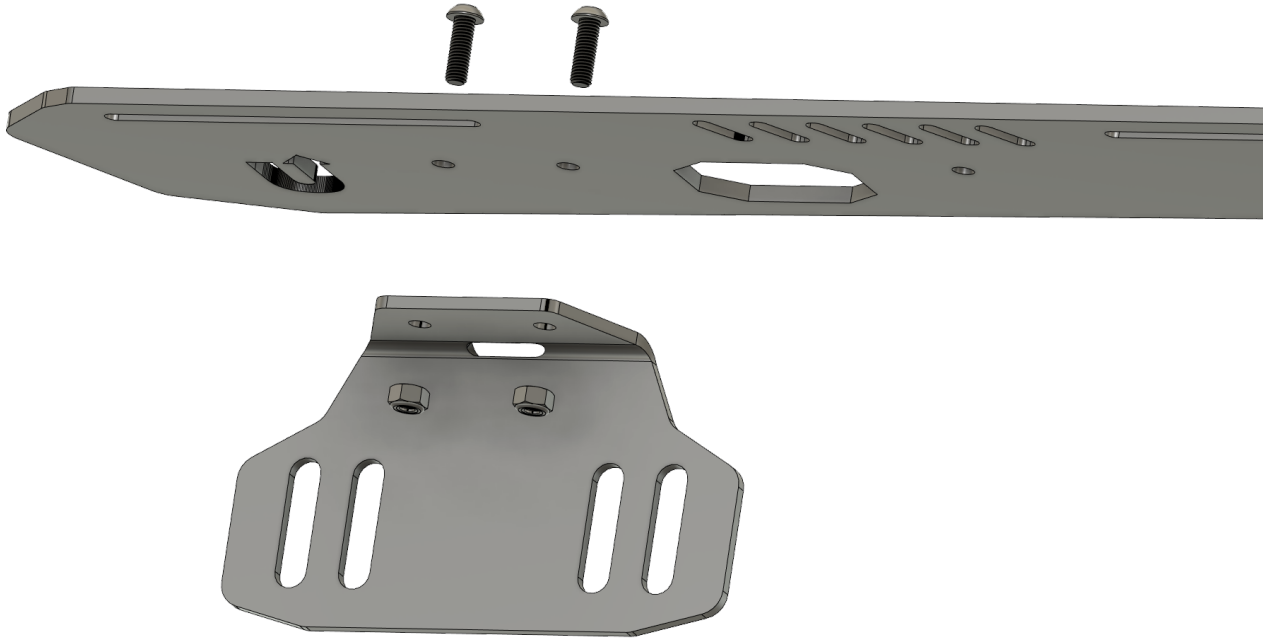


Figure 6
Feet

The six (6) larger feet supplied with your kit are identical. They are machined to allow them to be used at any location in the rack to simplify the assembly.

The multiple slots in the base of the feet will align with the factory inserts in your drip rails. The slots used will vary but when the rack is in the proper position on the roof of the vehicle the slots will align to places that you can anchor the rack to the vehicle.

You will install three (3) feet per side. Using the hardware labeled “Feet to Rack”:

- Align and install the feet (illustration provided on next page for locations) and use 5mm Allen wrench and 13mm wrench to set the hardware.*

NOTE:

If your kit includes black bolts you will use a 3/16” Allen wrench and 1/2” wrench.



Figure 7
Feet (Cont)

This is the DRIVER side of the rack assembly. The feet install to the INSIDE of the rack as shown. The locations will be obvious as the holes in the feet will only align to the holes properly spaced in the rack.

Your rack will be assembled with both sides and the load bars at this point however for clarity only the driver side is shown in this guide.

The front pressure foot is shown in this illustration but it will be discussed on the next page.

- ***Install the feet as shown.***
- ***Repeat the process on the opposite side of the rack.***

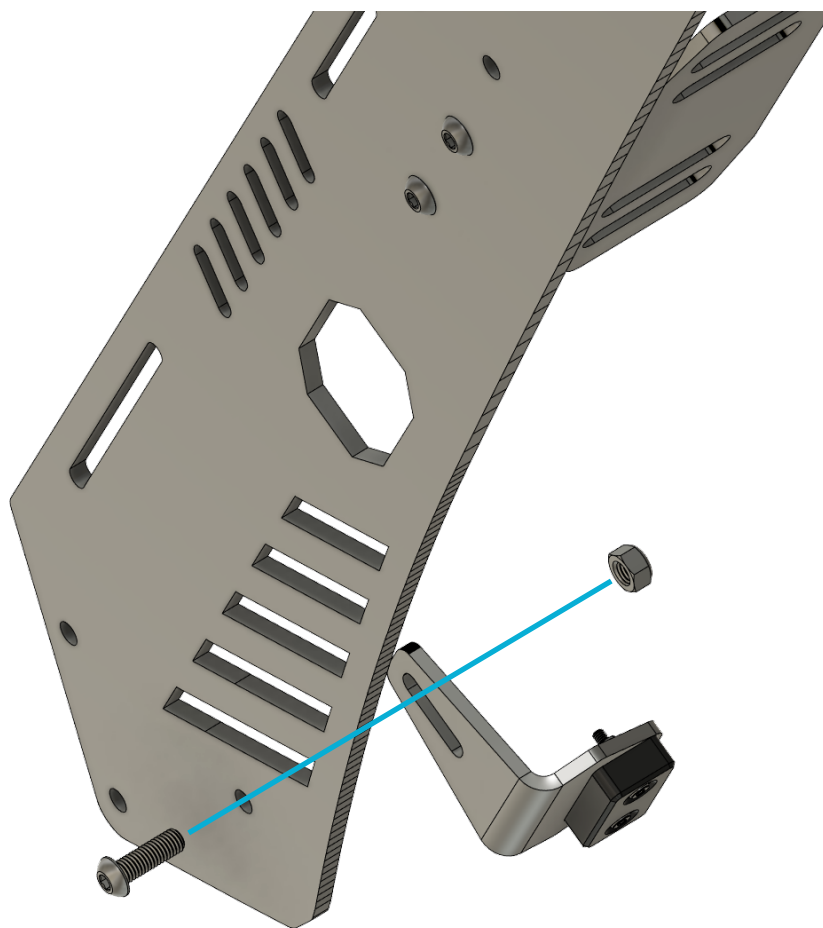


Figure 8
Pressure Feet

One(1) of the preassembled pressure feet will be installed at the FRONT of the rack as shown. DO NOT fully tighten the hardware until the rack is installed on the vehicle. You will make adjustments to the position of the pressure foot to provide adequate support to the front of the rack but the rack assembly must be anchored to the roof in the factory locations prior to doing so.

If flat washers are provided in your kit add them to the fasteners as you are installing the hardware.

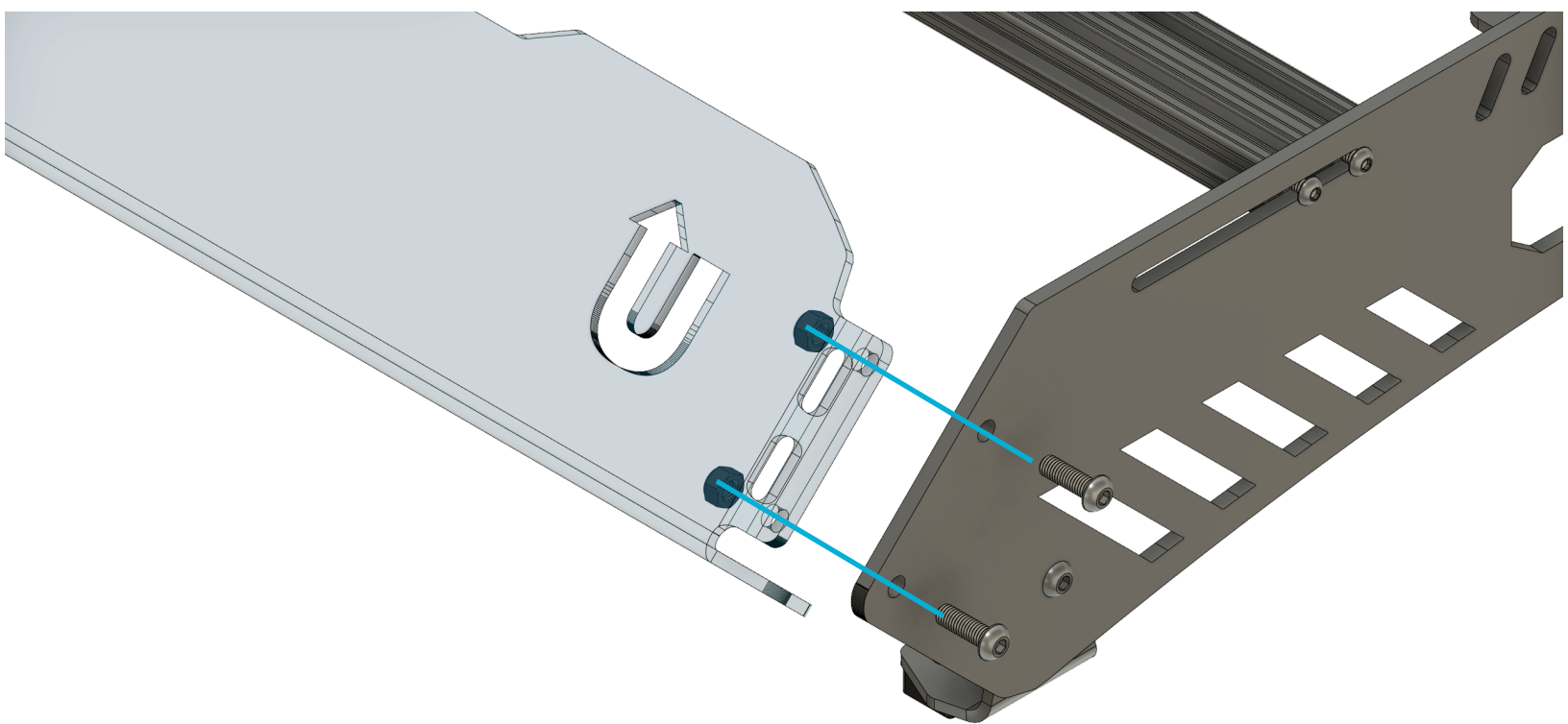


Figure 9
Wind Screen

The wind screen attaches by aligning the holes at the FRONT of the roof rack to the two (2) holes on the bent flange/side of your wind screen with the hardware labeled “Fairing/Wind Screen”.

The wind screen flange goes to the INSIDE of the roof rack.

If you are installing optional lighting to your windscreen please download our lighting/electrical guide prior to installing the wind screen as some options require additional steps/hardware prior to windscreen installation.

- **Use a 5mm Allen wrench and 13mm wrench to install the hardware.**
- **Repeat the process on the opposite side of the rack.**

NOTE:

If your kit includes black bolts you will use a 3/16” Allen wrench and 1/2” wrench.

VEHICLE PREPERATION

- *The factory roof rack (if equipped) must be removed prior to proceeding with the installation of your upTOP roof rack.*
- *All bolt locations will require the application of an outdoor rated silicone sealant (NOT INCLUDED) prior to placing the included spacers. Failure to use sealant will result in water penetration to the cabin of the vehicle and can damage the interior surfaces of the vehicle. It is the responsibility of the installer of this product to ensure that the sealant is properly applied.*
- *This rack is HUGE and it is HEAVY. DO NOT attempt to lift this rack onto the vehicle by yourself. It will not end well.*
- *Make sure the area around the vehicle is clear of obstruction and trip hazards.*
- *Ladders/Step stools may be required to properly and safely access the top of the vehicle. Refer to product user warnings for safe use.*

SEALANT/SPACERS

- *In all of the factory locations apply the sealant in and around the threaded holes in your drip rails.*
- *Refer to illustration on next page for spacer placement.*

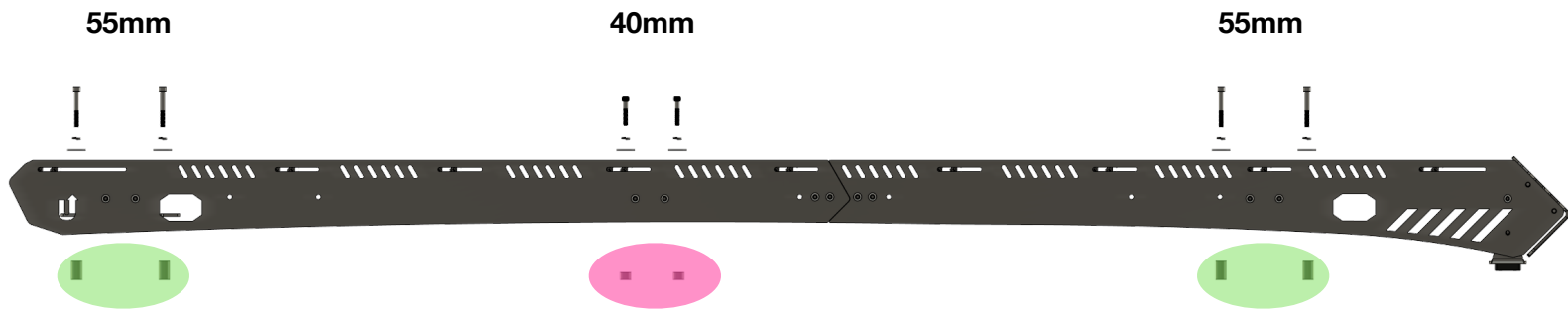


Figure 10
Spacer Placement

The spacers indicated in GREEN are 1.250" long and should be installed at the FRONT and REAR of the vehicle.

The spacers pictured in PINK are .500" long and should be placed at the MIDDLE of the vehicle.

You have been provided two (2) different length of bolt.

The 55mm bolts go to the FRONT and REAR locations.

The 40mm bolts go to the MIDDLE location.

The 55mm bolts are too long and will bottom out if used with the .500" spacers.

The 40mm bolts are too short to use with the 1.250" spacers and will not engage the threads in the drip rails.

- *Apply the SEALANT.*
- *Place the spacers on both sides of the vehicle as shown.*
- *WITH ASSISTANCE lift the rack onto the roof of the vehicle and place over the spacers.*
- *Gently sit the rack into place.*
- *Start ALL OF THE HARDWARE BY HAND.*
- *DO NOT fully tighten any hardware until all of the hardware is started.*
- *Work your way around the roof rack and tighten all twelve (12) bolts with a 6mm Allen wrench.*
- *Adjust the FRONT pressure feet so that the snout of the rack is supported and tighten the hardware into place. Same tools as the rest of your feet.*
- *Torque all hardware to specifications located at the rear of this guide.*

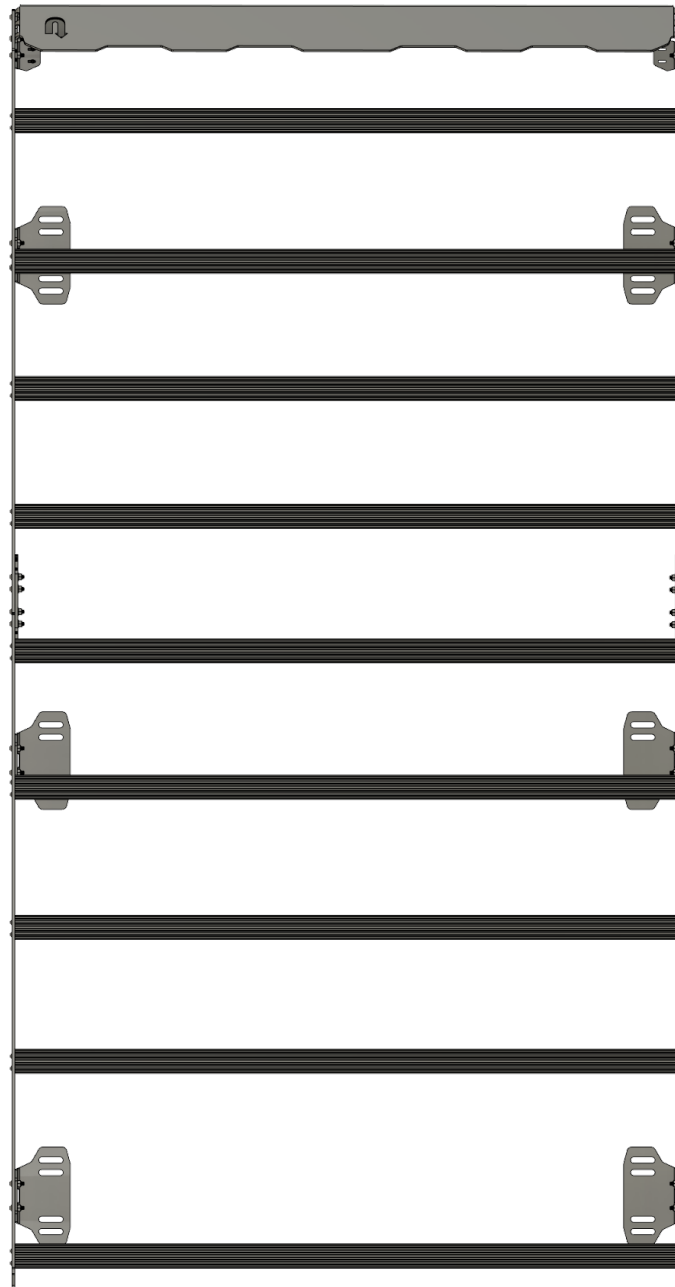


Figure 8
Aerial View

Toyota Sequoia 2007-Current Bravo assembled roof rack.

Toyota Sequoia 2007-Current ALPHA roof rack assembly/notes:

The Alpha version roof rack will install to the vehicle in the exact same manner with the same hardware/spacers.

Additional assembly is required for the Alpha for the Armor/Grab Handles.

The grooveTEK will bridge together with the plate joiners. The armor will simply attach to the grooveTEK into the factory installed threaded inserts.

For detailed assembly of armor to grooveTEK please reference our 5G4Runner roof rack assembly as the methods are nearly identical to the Sequoia.

FINE PRINT

GENERAL MAINTENANCE AND CARE

The various components of your roof rack were designed to survive in the harshest environments. The finish on your roof rack can be a mix of powder coat and/or paint.

Wash with soap and water in the general manner that you care for the exterior of your vehicle. Never apply solvents to the finished parts of your roof rack.

Periodically inspect the rack and various components for wear or missing parts. Repair or replace as needed. Replacement parts and hardware are available from upTOP overland.

Do not use this product in a manner inconsistent with the design.

Never exceed the weight capacity of your roof rack. All weight limits quoted are for dynamic (moving) only and static (stopped) weights might be considerably higher. Consult vehicle manufacturer for recommended weight restrictions.

It is the sole responsibility of the end user to inspect rack and components keeping them in good working order. It is additionally the sole responsibility of the end user to ensure rack is used in harmony with the intended design.



This guide supersedes all information produced prior to revision date in lower right corner of this document. It is the responsibility of the end user to periodically check fasteners for proper torque. Failure to comply could result in product failure.

TORQUE SPECIFICATIONS ROOF RACK

Fastener Use VC3 Required Inch Pounds (iP) Newton Meters Tool(s) Required (nM)				
Load Bar (Hex)	No		80	9.03 7/16"
Load Bar (Button)	No		75	8.47 5/32"
Foot To Rack-Alpha	Yes		130	14.68 1/2"
Foot to Rack-Bravo	Yes		125	14.12 5mm/13mm
Foot to Load Bar	Yes		77	8.7 5/32"
Wind Screen (Flange Nut)	Yes		90	10.16 5mm/13mm
Wind Screen (Black Hardware)	No		125	14.12 3/16" / 1/2"
Wind Screen (Nylon Lock)	No		125	14.12 5mm/13mm
Spine Nut (Nylon Lock)	Sealant		77	8.7 4mm/10mm
Load Bar Clamp to Spine (Bravo)	Yes		125	14.12 5mm/13mm
Load Bar Clamp to Spine (Alpha)	Yes		130	14.68 1/2"
Rack to Roof (M6)	Sealant		90	10.16 5mm
Rack to Roof (M8)	Sealant		125	14.12 6mm
Armor to grooveTEK	No		65	7.34 5mm
Grab Handle	No		65	7.34 5mm

(1) Inch Pound = 1/12 Foot Pound

Roof Rack-All Torque Specifications Rev.1.31.22