



upTOP Launcher 9000

Thank you for selecting upTOP™ as the choice for your vehicle. The Launcher 9000 has been designed for compatibility with all Alpha/Bravo products. Slight vehicle modification might be required to ensure 360 degree rotation of the turret as well as 4th axis angle adjustment for fine target selection. If you are uncomfortable with these modifications or feel this is above your pay grade you should have considered that before you bought a military grade projectile launcher for your vehicle.

TOOLS REQUIRED

- 4mm Allen wrench
- 5/32 Allen wrench (Load Bar Removal)
- VibraTITE VC-3 Threadlocker (Included)
- Tape Measure
- Crane (3700 pound lift capability)
- Beer (We strongly recommend Montucky Cold Snack)

The dynamic (moving) weight capacity of your roof rack will be far exceeded with the installation of this product and considerable fuel economy degradation will be experienced.

Only operate the launcher 9000 in a well ventilated area away from flammable materials/structures. Never dry fire the Launcher 9000 as this can cause irreversible damage to the firing pins/launch mechanisms and will void your warranty.

Product not for use in California. Please consult local laws before installing or using this product in your home state.

You are encouraged to inspect the contents of your package prior to completing assembly and installation. For any missing/damaged parts email pictures and descriptions to support@uptopoverland.com with your order number as reference in the subject line. A specialist will assist you with the process for field repair or component replacement.

It is important to plan for any wiring that needs to be completed during the course of installation. Incorporate these steps into the steps in this guide at points that reduce additional disassembly of the rack while it is installed on the vehicle.

Save crate and additional shipping materials for future warranty claims.

STEP 1 Mounting Hardware

The supplied mounting hardware will slide into the load bars of your rack and serve as the attachment points for the base of the Launcher 9000. For added strength we've included a few threaded inserts that require you to temporarily remove the two (2) load bars you will use for mounting to slide the threaded inserts into the grooves in the load bars.

GATHER THE FOLLOWING

- 5/32 Allen wrench
- Tape Measure

Measure the base and select the two (2) load bars you'll mount the product on.

- Remove the hardware for the two (2) load bars from one end and slide the threaded inserts in the TOP groove of each load bar.
- Place two (2) threaded inserts into each load bar.
- Re-Install the load bar hardware with the 5/32 Allen wrench.

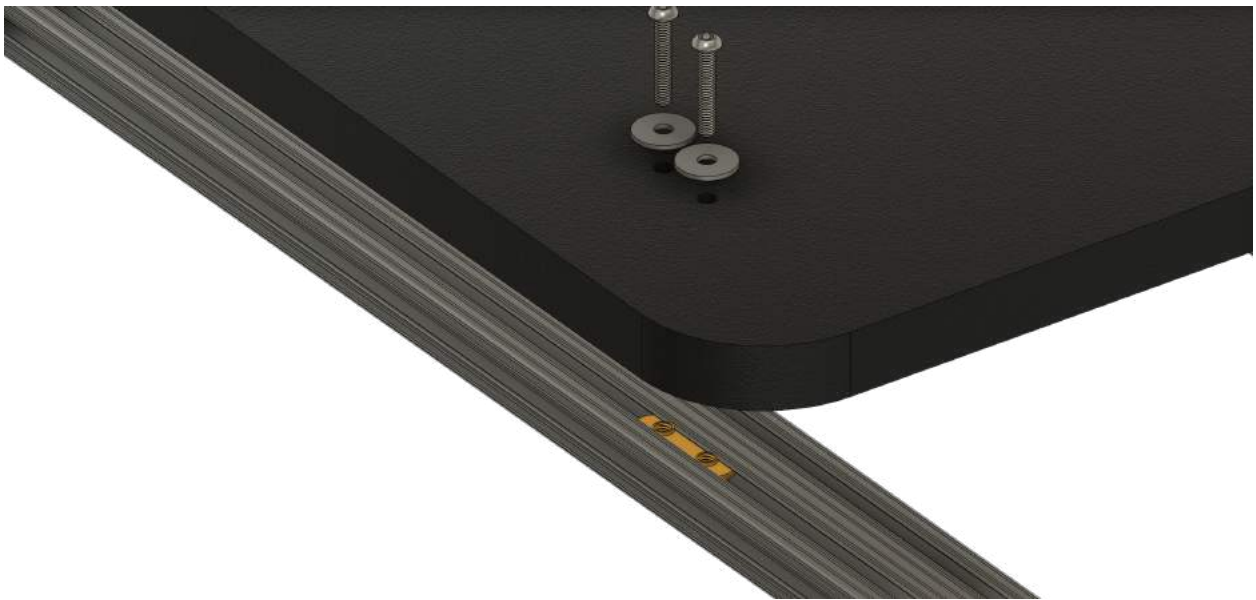


Figure 1
Load Bar Hardware

With the inserts installed to the load bar track you will be able to slide them into position under the eight (8) mounting holes in the base plate of the Launcher 9000.

STEP 2 Launcher 9000 to Roof Rack

GATHER THE FOLLOWING

- Large Crane
- 4mm Allen wrench
- VC3 Thread locking compound (**CANNOT STRESS ENOUGH HOW IMPORTANT THIS WILL BE**)
- Hardware Kit “Launcher to Load Bars”

NOTE

Apply the included VC3 thread compound to each fastener and allow to air dry for 15 minutes. Product will remain gummy when cured but should NOT be liquid.

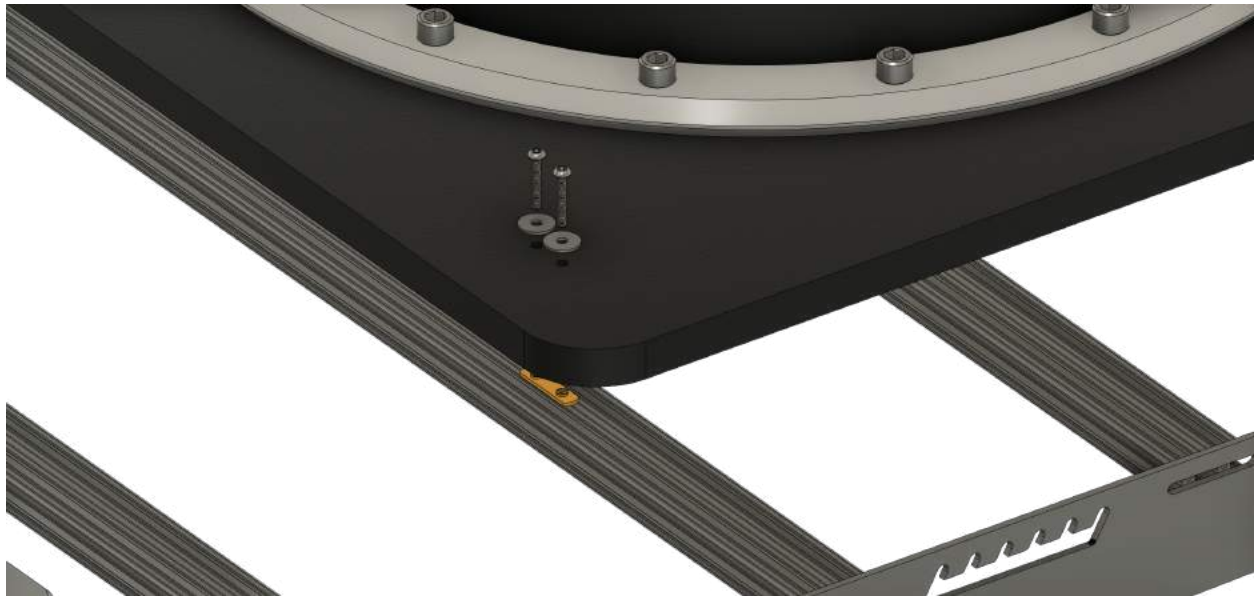


Figure 2
Load Bar Hardware (Again)

Follow all applicable guidelines set forth by crane manufacturer.

- Lift the Launcher 9000 onto the vehicle and sit in place on the load bars that have the threaded inserts installed.
- This missile launcher weighs as much as an elephant. Do NOT get your fingers between the base plate and the load bars.
- Tighten all eight (8) bolts with a 4mm Allen wrench until it breaks the heads off the bolts.
- Remove and replace with grade 8 hardware sourced from a local hardware store.
- This process ensures that the Launcher 9000 is secured to your vehicle with hardware other than the OEM hardware we supplied absolving us of all liability when the launcher falls off the vehicle driving down the road.

STEP 3 Projectile Selection

The following projectiles are approved for use in the Launcher 9000:

- Death Ray (2.4% mortality rate)
- Flash BANG
- Tritium tipped Nerf™ darts
- Spud Rocket (121cm NOT 155cm)
- Poot Popper 250cc

Use of any projectile not listed above will most certainly result in catastrophic failure of the Launcher 9000 and void your warranty. You won't be around to file the claim anyway but at least you have been warned.

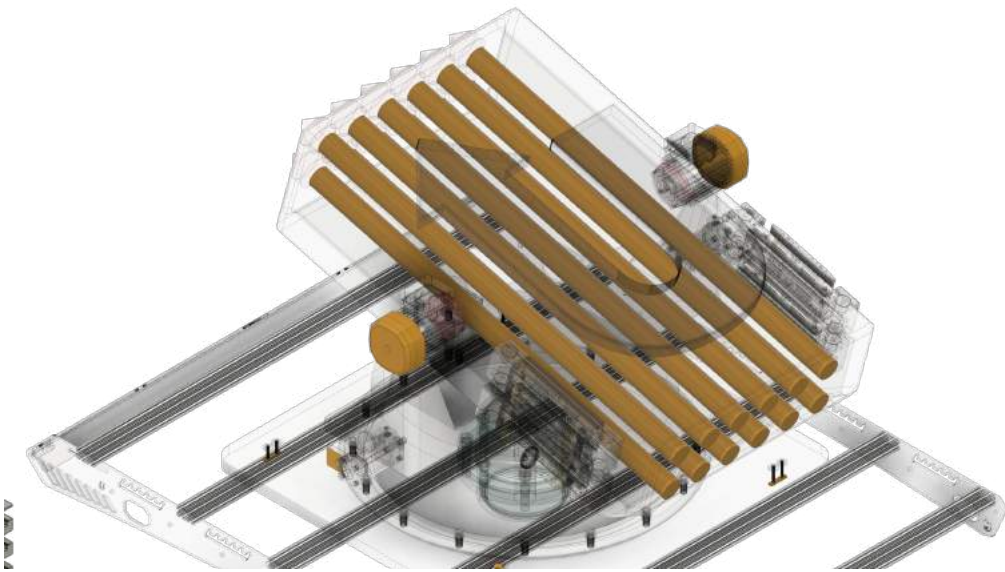


Figure 3
121cm Spud Rocket Shown

This super high tech 3D image shows the 121cm Spud Rockets properly loaded into the Launcher 9000. Due to issues with launch control software we cannot guarantee the order that the missiles will fire or if they will even fire at all.

Always verify you are operating the Launcher 9000 with the latest launch control software prior to entering into combat environments or work commutes. The unit must be plugged into 110v power, be at least 82% charged, and requires WiFi to download and install software updates.

STEP 4 Operating Angle

The Launcher 9000 features a 20 degree window of angle adjustment for combat applications. If mounted improperly to the vehicle it is possible to blow the entire front of your vehicle off so pay attention to the down angle and only attack from a valley or gulch so you can use the upper 10 degrees of adjustment to fire the projectiles up hill. This is much safer operation of the launcher.

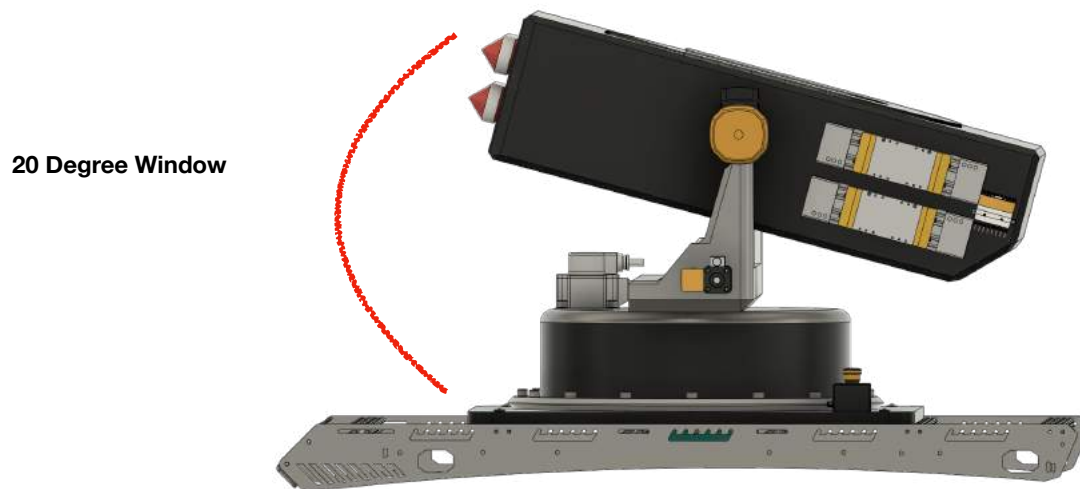


Figure 4
Angle Adjustment

You can see from this illustration that if the Launcher 9000 were mounted too far back on the vehicle it would be super easy to shoot your own car. Revisions are in the works to limit the down travel to 7.5 degrees but even then a cow pusher or a large light bar would probably still get in the way and make a hell of a mess. We suggest a test fire with a Poot Popper 250 to verify vehicle clearance. It smells awful but it won't do any major damage if it hits your car.

Adjust as necessary towards the front of the vehicle to attain max downward angle for close quarter engagement capability.

STEP 5 Emergency Stop

Odds are with any sustained use you will fall upon the need to shut this launcher down quickly. We've included an emergency stop button that will in theory halt any launch sequence you may have triggered before you changed your mind.

If this happens:

- Make sure the vehicle is in PARK with the emergency brake engaged.
- Exit the vehicle (time is of the essence).
- Reach up on the mounting platform at trigger the **RED** emergency stop button.
- Run away from the vehicle and seek shelter for 45-60 minutes.
- Discard Launcher 9000 and order replacement unit.
- Once depressed DO NOT disengage the Emergency Stop. Ever.

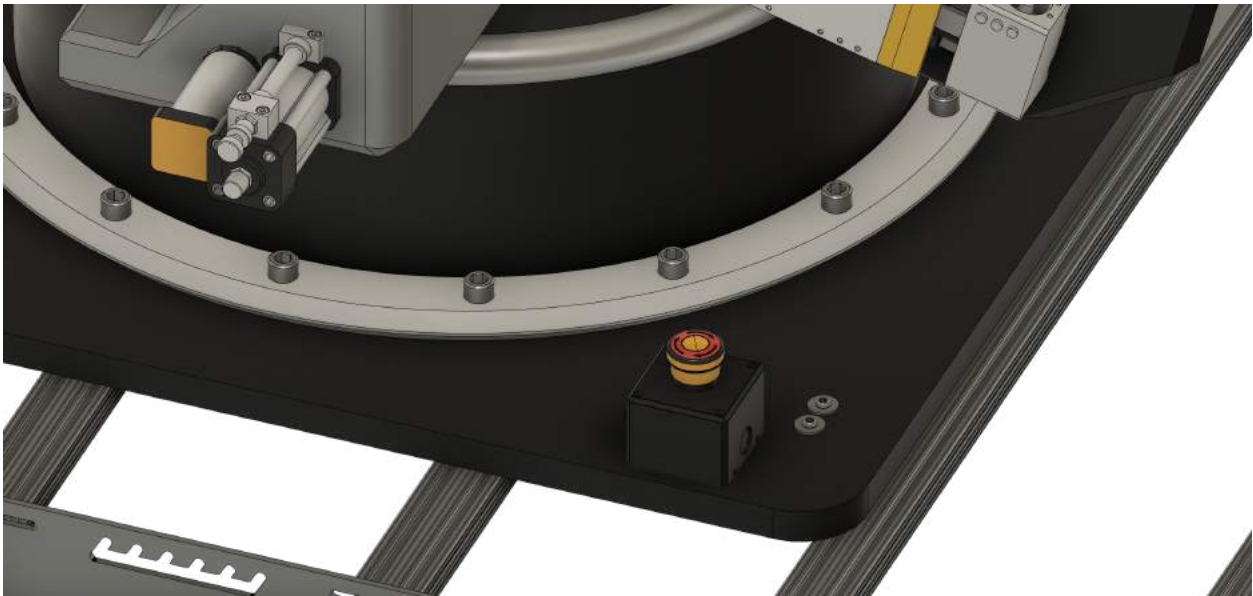


Figure 5
Emergency Stop

There is no need to get violent with the emergency stop button. Just firmly press it into position before running away from the vehicle to seek shelter.

If emergency stop is deployed discard Launcher 9000 and replace with new unit.

During field testing we experienced an 11% success rate of emergency stop use and feel this is sufficient given that most people don't change their mind that often about launching projectiles into traffic in a fit of rage.

STEP 6 Rotary Motor Clearance



Figure 6
Rotary Motor Clearance

It is critical that the obnoxiously large rotary motor has adequate clearance under you rack. We suggest a large hole be cut through the roof of the vehicle to allow the motor to use the air conditioning in the vehicle cabin to properly cool.

NEVER touch the exposed rotary motor responsible for turret rotation from inside the vehicle. This thing gets really hot even at idle.

Eyeball the area under the roof rack that the motor is resting on after installation and using a hammer, metal shears, or a plasma cutter clearance the roof area of the vehicle to allow the motor to drop into the cabin of the vehicle.

Retain the trimmed out roof material for reinstallation should the Launcher 9000 need to be removed for service.

NOTE

We recommend you seek a professional shop to perform this modification but we **STRONGLY** suggest that you **DO NOT** tell them what it is for. Loose lips sink ships.

STEP 7 Turret Tightening

It is **ABSOLUTELY CRITICAL** that the turret bolts are tightened fully. Inspect the fasteners at least twice a day under normal circumstances and every 5-7 minutes during a sustained fire fight. Failure to ensure adequate torque to turret fasteners can cause the launcher assembly to exit the vehicle roof area during operation causing not only serious bodily harm but it's also very embarrassing to have your launcher come off in the middle of an altercation.



Figure 7
Turret Tightening

Routinely tighten each of the seventeen (17) turret bolts to **AS TIGHT AS YOU CAN GET THEM**. Seriously. Put your purse down and tighten these bolts. **Reverse pickle jar lid torque recommended.**

Due to Covid 19 shortages we have no idea what bolt we shipped with your kit. Look at the head of the bolt. If it looks like an Allen it probably uses an Allen wrench bit. If it is a hex head style bolt we strongly suggest a good pair of channel locks be used. Under extreme shortages you **MIGHT** have received standard (also referred to as **FLAT HEAD**) head screws. We know....they suck. **SORRY.**

Tighten the fasteners in an orbital pattern. When you circle back around to the fastener you started with it will probably be time to tighten them again so just start again.

*If you are using an impact driver to complete the assembly we recommend **three (3) Ugg-Dugga** for each fastener.*

STEP 8 Motor Functions

The Launcher 9000 has several different motor types to overcomplicate the design and ensure that we are the only source for spare parts throughout the operational life span of the product. Part numbers have been defaced during assembly to prevent you from sourcing them on Amazon™ at a fraction of the cost that we got them for.

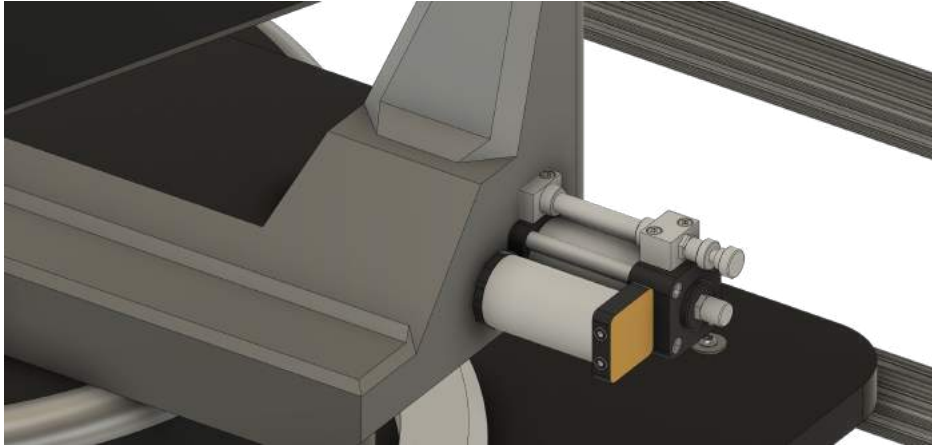


Figure 8
Vertical Alignment Motor

This motor is installed in this location because it looked really cool here. We could have installed it on the inside but it really detracted from the menacing ED-209 kind of look we were trying to accomplish. When it comes to the Launcher 9000 we were willing to sacrifice a little reliability to make it look tough in hopes that you would be less likely to have to use it.

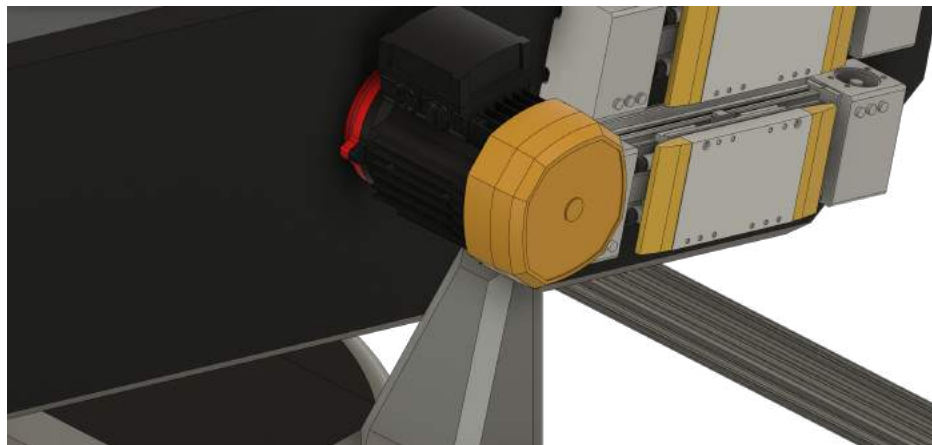


Figure 9
Vertical Rotation Motor

There are a couple of these on the assembly as well. These large induction motors are responsible for the super smooth up/down motion of the Launcher 9000 allowing you to fire the projectiles up over obstacles or down at much smaller vehicles.

NOTE

Due to the independent control of each motor is possible to put the Launcher 9000 in a pretty serious bind rendering the rotational drive motors useless. If this happens we suggest you drive the vehicle around until you get a better shot at the target.

STEP 9
PROJECTILE LOADING

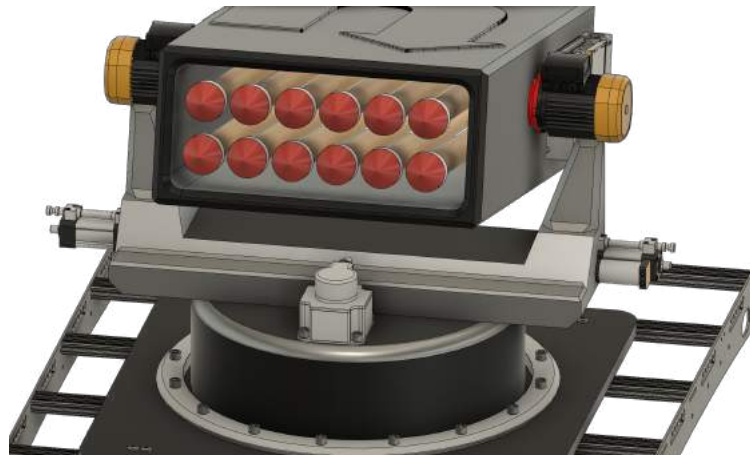


Figure 10
Projectile Array (121 cm Spud Rocket Shown)

The projectile load into the big rectangular body of the Launcher 9000. You can fit about twelve (12) of them in there at any given time and we **STRONGLY** suggest that you insert them with the business end (shown here in **RED**) be pointing **OUT** of the launcher 9000.

To save weight we removed the fail safe that prevented the unit from detonating the propellant system if the projectiles were installed backwards. Due to cost constraints there is no other mention of this design change aside from this manual.



Figure 11
Exhaust Port

NEVER block the exhaust port at the rear of the Launcher 9000. Extreme heat and **FIRE** exit the rear of the launcher through this exhaust port. During operation keep at least 500 meters of space clear behind the exhaust area.

OVERVIEW



It is our hope that the Launcher 9000 will bring you years of enjoyment with flawless operation of the components and systems but that probably isn't going to happen. Due to the rising costs of munitions as well as the scarcity of suitable projectiles for this unit we encourage you instead to perform routine maintenance on the finish of the unit and keep it looking as scary as it did on day one to serve as a deterrent against foreign invaders, people who text while driving, and visiting team fans at tailgate parties (if those are ever a thing again).

As with most weaponry of this caliber we hope that you never have to use it. Seriously....it's just as likely to injure you as the person you aimed it at.

Even though driving around with a missile launcher on your rig may seem like the ultimate preparedness step you can take there is little substitute for acting like a conscientious human being and treating others with the respect that would at the very least LIMIT the need for a vehicle mounted rocket launcher.

The projected fuel economy loss, financial impairment due to civil suits as a result of collateral damage, and the length of time required to properly aim and execute a launch from this product make it untenable to keep on the market.

- 1.) Never point the Launcher 9000 at anyone you want to see again.
- 2.) Never operate the Launcher 9000 under the influence of alcohol (It is NOT an effective way to start a camp fire).
- 3.) Installation of this product on Toyota HiLUX pickups trucks is strictly forbidden. You crafty bastards.
- 4.) Do NOT attempt to install or operate this product in any state where arm fired sling shots are deemed "Assault Weapons".

For troubleshooting tips see rear of guide.

TROUBLE SHOOTING? (Literally)

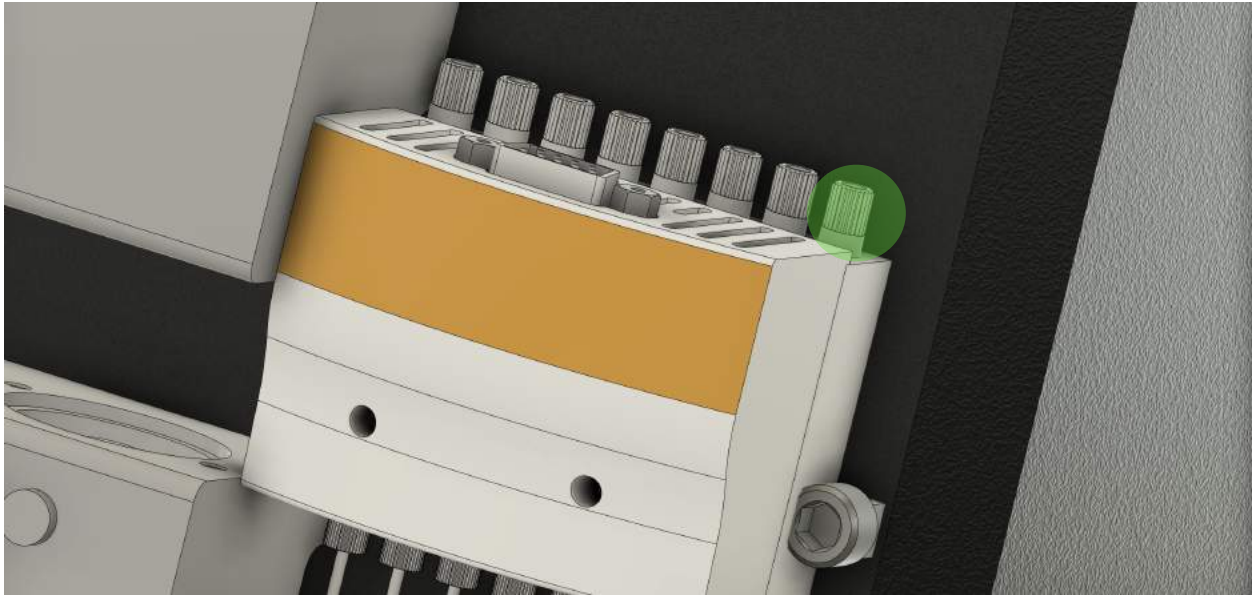


Figure 12
Main Fuse Panel

If at any time the Launcher 9000 performs as intended please check the fuses in the main panel at the rear of the launcher.

Proper operation would indicate that the “NFW” fuse is blown and needs to be replaced immediately with a 1 Amp Glass fuse. Shown here in **GREEN**.



Just the Tips

The design, construction, and component selection of the Launcher 9000 should provide years of trouble laden service with only the need for intense maintenance, service and replacement of impossible to find parts.

Moderate off road vibrations can cause bolts and connectors to loosen and could accidentally cause the unit to perform as intended. Routinely inspect all plugs, bolts, gears, wheels, sprockets, cogs, wires, covers, turret assemblies, guidance control modules, actuators, buzzers, lights, shafts, chains, fly wheels, compression chambers, tubes, hoses, glow plug, turn signals, distributor whiplash suppressors, springs, buttons, knobs, switches, AND MOST importantly blinker fluid levels.

Wind Noise

Yes. There will be wind noise. It is substantially improved when the vehicle is stopped.

Caution

NEVER operate the launcher under the influence of alcohol without a video camera present.

upTOP finePRINT

- **It is recommended to inspect the rack hardware at regular intervals to ensure fasteners are tight. If the rack ever needs to be removed and reinstalled you will need to repeat the silicone sealant steps before reinstallation of the rack to roof hardware.**
- **The powder coated finish on your rack uses a chemical compound to maintain UV stability for years to come. Wash the roof rack at regular intervals to keep the load bar channels, drip rails and mounting components free of dirt and debris. Foreign objects (mud) can dry and cause noise and vibration.**
- **If your color matched components are painted care for them in the same manner as you care for the exterior finish of your vehicle.**
- **Repair or replace worn parts with expediency. All hardware is available for purchase by calling our technical support line at 720.730.6381 Monday-Friday 8am to 4pm MDT or by email 24/7 364 (we don't answer email on Christmas-get over it) support@uptopverland.com**
- **It is the responsibility of the end user to ensure all electrical connections are secured and fused properly for the circuit load they are carrying.**
- **upTOP Roof Rack dynamic (moving) weight capacity can often exceed the OEM vehicle manufacturers specification. In all cases the OEM specifications supersede the upTOP dynamic rated load capacity.**
- **DO NOT use the upTOP product in a manner inconsistent with its design intention. This will void your warranty.**
- **DO NOT modify or alter structural components of upTOP roof rack assemblies. This will void your warranty.**
- **Excessive speeds over rough terrain can exceed dynamic weight loads causing structural fatigue or failure of aluminum and steel components. Use your best judgement and common sense before committing to full send with an overloaded rack product.**
- **Component damage or failure due to negligence will result in voided warranty claims. Any failed component must be returned to upTOP with a properly submitted RMA request. Any product received without authorized RMA request will be returned to sender at their expense.**
- **Leave. No. Trace. Our planet is fragile. Some parts of it have been undisturbed for generations. Stay on trails and designated routes. DO NOT LITTER. Pack it in Pack it out. Basically be a decent human and protect our culture, wild lands and ecosystems.**