

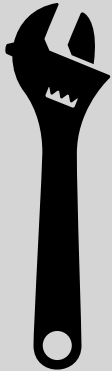


ETM23

- eX Rack to TRUSS Bed Rack
- Variable Height

Thank you for trusting upTOP™ as your choice for adventure gear. We proudly design, develop, test, and manufacture our products along the front range of the Rocky Mountains in Colorado.

A lot of thought has gone into this product design so that you can install and maintain the product yourself. Browse these instructions to familiarize yourself with the process and required tools prior to beginning your installation. If at any time you do not feel confident completing the installation yourself we recommend professional installation of this product through our network of authorized resellers all over the globe. You can find more information about authorized retailers and installation centers under our dealer locator tab located on our website.



TOOLS REQUIRED:

- 5/32 Allen
- 1/2 wrench
- 7/16 wrench
- Tape Measure
- Level

NOTES ABOUT INSTALLATION

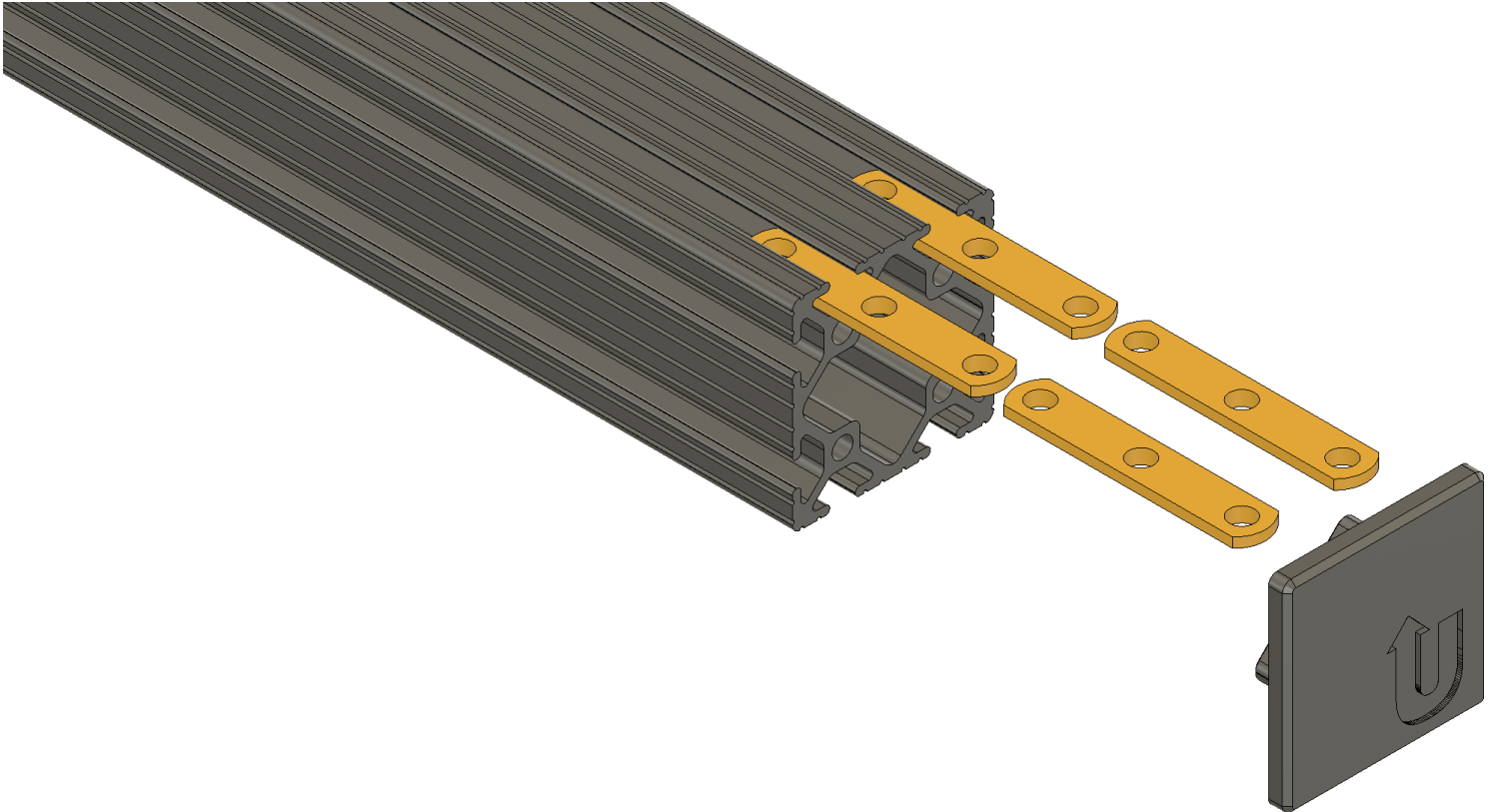
- This kit is designed specifically for mating an eX roof rack to an upTOP TRUSS (*sold separately*) bed rack. If you are mounting your eX roof rack to a camper shell/topper this is not the correct kit.
- The ETM kit will allow you to dial in the final height of your eX roof rack so that the cross bars are as close to even as possible with cross bars on your roof rack, if equipped.
- You can use the 4094 lower brackets as a stand alone mating solution with the fixed height of 2.1" or you can couple the 4095 to the 4094 for a maximum lift of 5.1" Using the slide adjustment slots to settle on any amount of lift in between those two parameters.
- This guide covers only the assembly and installation of the ETM brackets. For additional information on eX roof rack installation please see the guides/videos located on our website.

KIT COMPONENT LIST ETM23

Part Number	Quantity	Description	Tool Required
4094	4	Base Mount L Shaped/Studded	
4095	4	Variable Height Plate/Slotted	
ETT010	12	1/4-20x3 Threaded Insert For Cross Bar	
43826514016-BL	36	1/4-20 x .500" Btn Hd Bolt Black SS	5/32 Allen
433403108-BL	36	1/4 Flat Washer Black SS	
1031011	8	5/16-18 Nylon Locking Flange Nut ZP	1/2 Wrench
VC3 5mL	1	Tube 5mL VC3 Thread Lock Compound*	

***Apply VC3 to all loose bolts provided with kit and allow to air dry for 30 minutes prior to installation. DO NOT apply VC3 to the provided nuts or studs imbedded in the 4094 parts.**

STEP 1



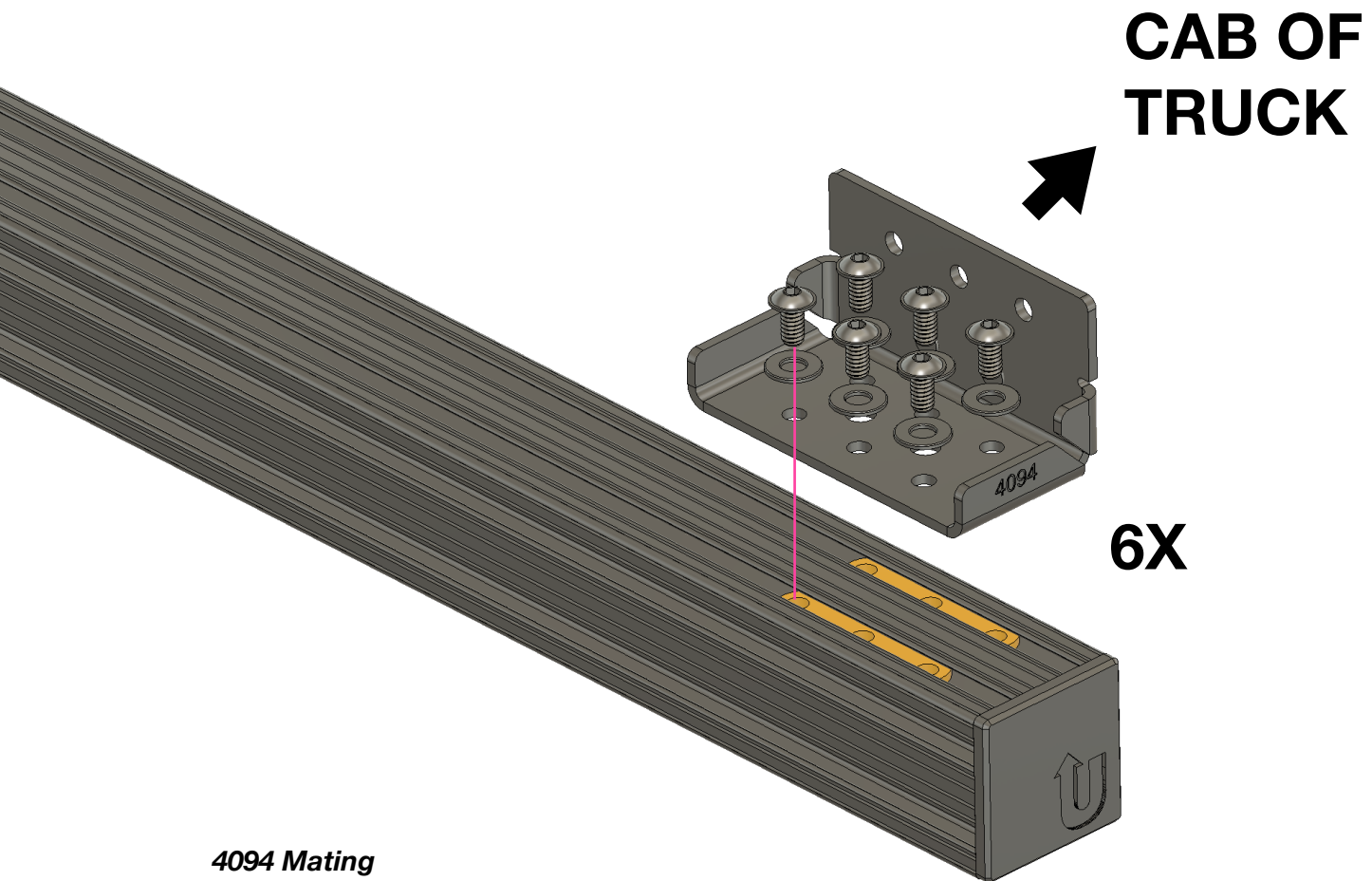
Placing the Threaded Inserts

You will need to temporarily remove the end caps from your TRUSS cross bars to install the threaded inserts as shown above. It doesn't matter if you have a 6 or 8 leg TRUSS, you need to remove the caps on the cross bars located at the FRONT and REAR of the truck bed. The ETM does not connect to any middle cross bars.

You do not have to remove the cross bars from the TRUSS to complete this step. Bed rack not pictured.

- **Release the cap from one end of each of the two (2) cross bars. You can slide them across to the other side so there is no need to remove both ends.**
- **With the cap removed install two (2) threaded inserts into the upper slots as shown.**
- **Repeat the process with the other load bar (front or rear depending on where you started).**
- **Replace the end caps.**

STEP 2



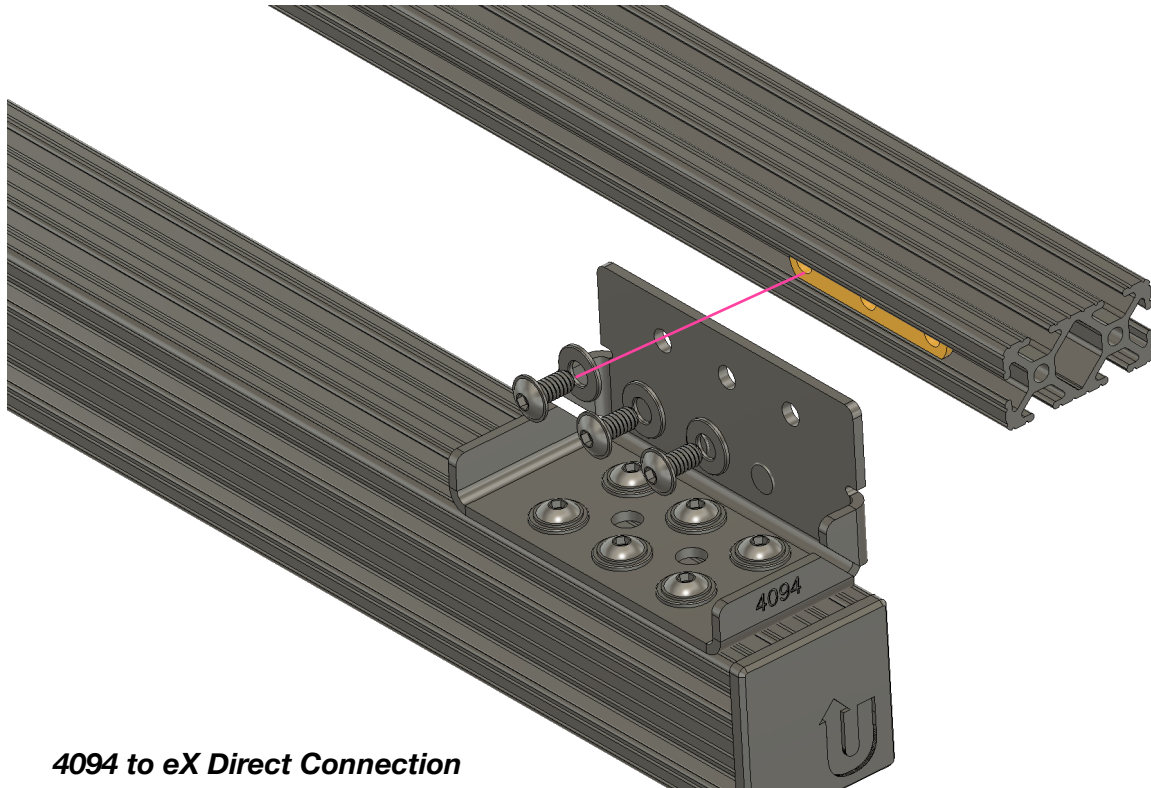
4094 Mating

The 4094 brackets are the main connection point between the eX roof rack and your TRUSS cross bars. They will attach to the cross bars as indicated above. Each cross bar will receive two (4094) and you will want them as far apart as possible. This will depend on the width of the cross bars in your eX rack and TRUSS. Just use your best judgement allowing adequate space and keep them as close to the outside of the cross bars as you can.

- Be sure that you have already applied the VC3 thread compound and have allowed time for it to dry adequately before installing the hardware.
- Each bolt will couple with a flat washer. Each 4094 gets six (6) bolts.
- It's okay to start the hardware and leave it loose enough to slide the 4094 in the cross bar channel so that you can get a perfect position with the eX roof rack installed before final tightening.
- Use a 5/32 Allen wrench for the bolts we provided with the kit and install two (2) 4094 brackets to the front and rear cross bar of your bed rack. The folded flange with three (3) holes should always face the cab of the truck, not the tailgate.

STEP 3

Before proceeding please measure the difference between the TOP of the cross bar on your roof rack (if equipped) and the TOP of the cross bar on your TRUSS. If the difference is 2" or so you can proceed by attaching your eX directly to the 4094 brackets. If you need more lift to get the eX roof rack cross bars even with your roof rack you will proceed by adding the 4095 brackets shown on the next page. Step 3 assumes you've checked the measurements and can employ only the 4094 brackets to have a level load platform between your eX and cab roof racks.

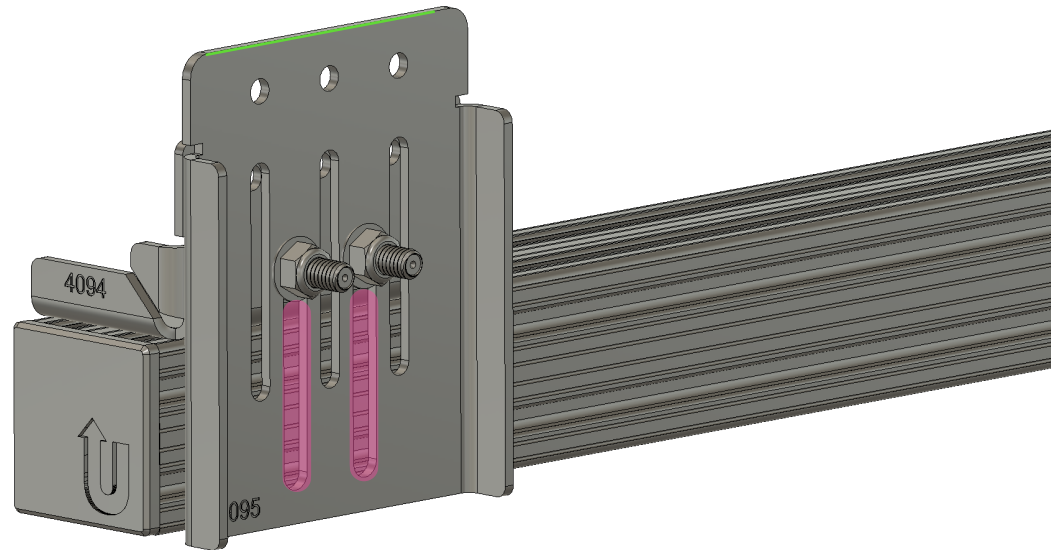


4094 to eX Direct Connection

- If you have already assembled your eX roof rack you will need to measure and target the two load bars that would center the eX rack over the bed of the truck. Remove the two cross bars and install two (2) threaded inserts into the short channel as shown above to each cross bar. When we install eX racks in house we assemble them on the bed rack a piece at a time so this guide assumes you are doing it the way we do.
- Align the cross bar to three(3) holes at the top of the 4094 and use a 5/32 Allen wrench to start the hardware. Do not fully tighten the hardware so that it is easy to slide the cross bars back and forth to center them over your bed rack.
- For proper alignment and hardware serviceability you should install the eX cross bars as shown on the side of the 4094 that would be closest to the cab of the truck. Please **DO NOT** install the cross bars so that they sit over top of the hardware used in STEP 2 as you will not be able to access the bolts to tighten and maintain them.

STEP 4

This step assumes that you checked the math to be level with an existing roof rack and you need to additional lift provided by the 4095 plates. If you attached your eX roof rack cross bars directly to the 4094 brackets you can skip this step.

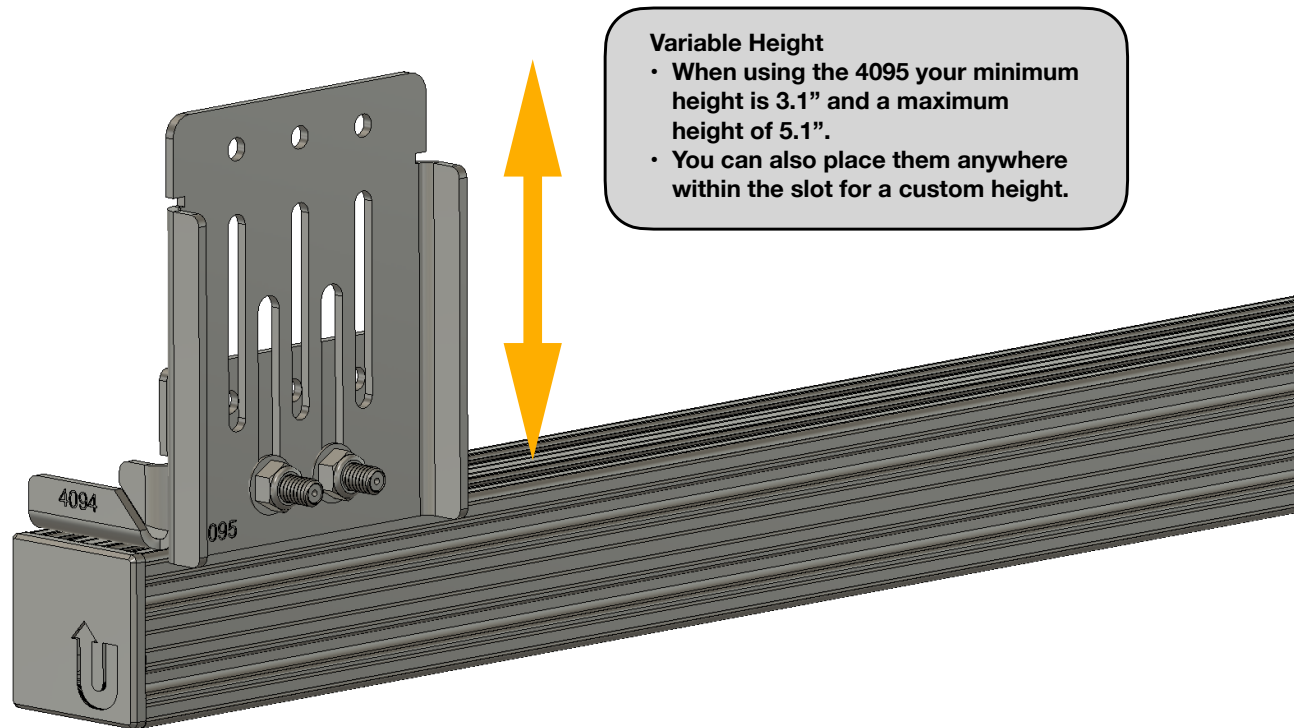


4095 Coupling

- Shown here in the lowest possible position the 4095 is attached to the 4094 via the machined slots shown in **PINK**.
- Align the 4095 slots over the studs in the 4094 and install a locking flange nut onto each stud. If you are sure about your desired height you can fully tighten the nuts. If you want to be able to adjust them with the eX roof rack installed leave them just snug enough to hold position when you slide the 4095 up and down. You'll use a 1/2" wrench for this hardware.
- The three(3) remaining slots are not currently used and will be discussed at the rear of this guide.
- Once you have all four (4) 4095 brackets attached to the 4094 we strongly recommend that you make your final measurements for desired height **PRIOR** to installing the eX roof rack. For reference measuring the top line of the 4095 shown in **GREEN** is the exact same height with or without a cross bar installed. The cross bars final resting position is dead even with the top of the 4095 to make it easy to get them exactly where you need them to be.

STEP 5

This step covers height adjustment of the 4095 brackets. If you attached your eX cross bars to the 4094 brackets and will NOT be using the 4095 you can skip this step.

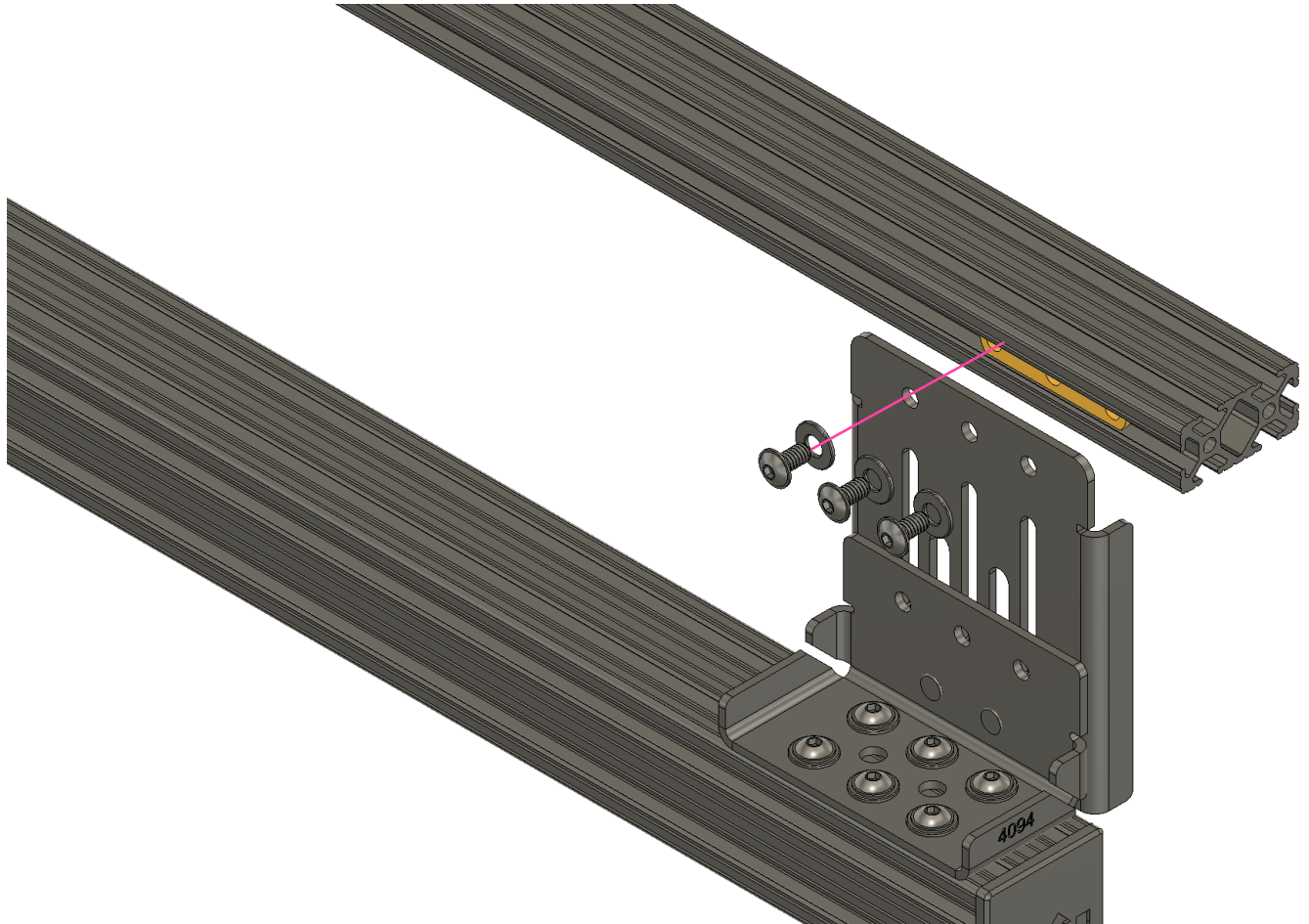


4095 Maximum Height

- Shown here in the highest possible position the 4095 can be extended to a maximum height of 5.1"
- Loosen the flange nuts with a 1/2" wrench and adjust the FRONT to 4095 brackets to the desired height. Once satisfied fully tighten the flange nuts.
- Measure the REAR 4095 brackets to set to the same height as the FRONT cross bar.
- Confirm by using a level between the front and rear cross bar to ensure you are where you want to be.
- If your vehicle has a suspension rake you can absolutely set the front and rear height differently to compensate for that just don't be mad when people laugh at you.

STEP 6

If you are NOT using the 4095 brackets you can skip this step.

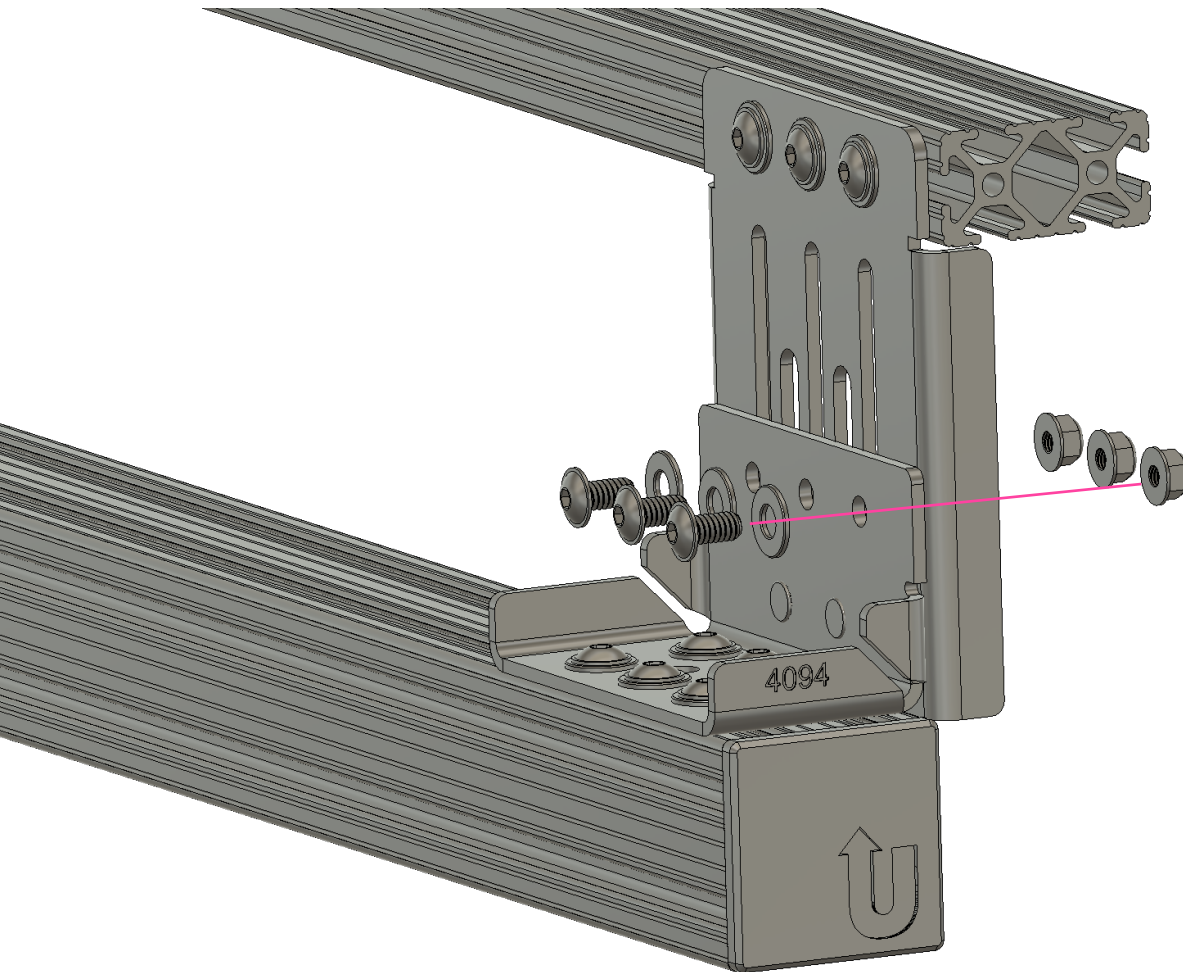


4095 to eX Connection

- If you have already assembled your eX roof rack you will need to measure and target the two load bars that would center the eX rack over the bed of the truck. Remove the two cross bars and install two (2) threaded inserts into the short channel as shown above to each cross bar. When we install eX racks in house we assemble them on the bed rack a piece at a time so this guide assumes you are doing it the way we do.
- Align the cross bar to three(3) holes at the top of the 4095 and use a 5/32 Allen wrench to start the hardware. Do not fully tighten the hardware so that it is easy to slide the cross bars back and forth to center them over your bed rack.
- For proper alignment you should install the eX cross bars as shown on the side of the 4095 that would be closest to the cab of the truck.

STEP 7

This step applies only if you are using the 4095 brackets. If you are NOT using the 4095 you can skip this step.

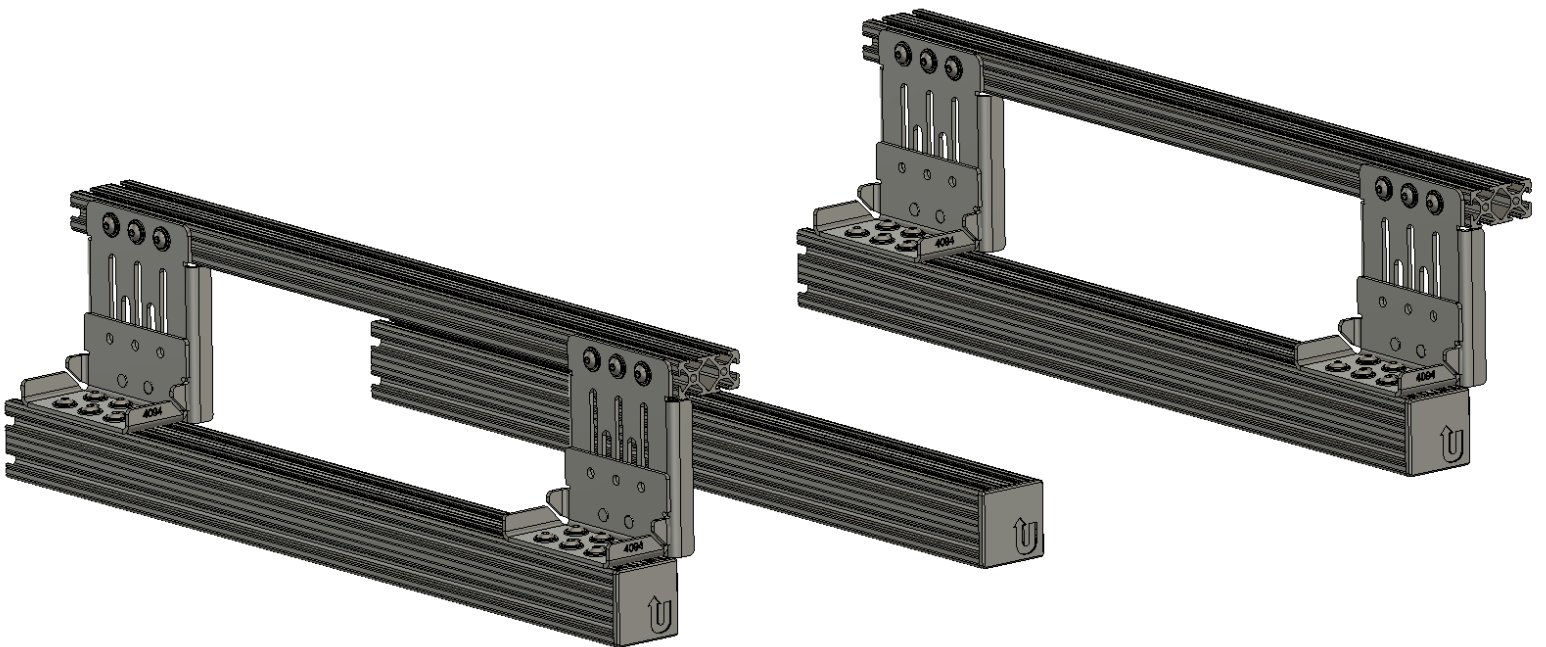


Additional Hardware

- To fully secure the 4095 brackets to the 4094 bases once you have everything aligned and placed as you want you install the hardware as shown.
- The hardware will pass through the holes in the 4094 and align with the previously unused slots in the 4095.
- On the 4094 side you will use the bolts and flat washers. On the 4095 side you will use the locking flange nuts.
- You do not need VC3 for this hardware.
- Repeat the steps on the remaining 4094-4095 pairs and fully tighten all the hardware with a 5/32 Allen wrench and 7/16 wrench.

STEP 8

If you did not use the 4095 extensions for additional height your progress will look different than this however the steps will be the same to complete the installation.



Final Assembly

- The illustrations used do not show the eX roof rack or TRUSS bed rack for clarity.
- With the ETM brackets installed you can make the final side to side adjustments to ensure the eX will be square atop the TRUSS bed rack.
- Once you've got everything into position you can fully tighten all of the hardware.
- Continue with the installation of your eX rack according to the eX instructions.

Contact Information

upTOP Overland
2278 Manatt Court
Unit C11
Castle Rock, Colorado 80104
720.730.6381
support@uptopoverland.com

Do your part. Our company is founded and staffed by outdoor enthusiasts that understand how fragile our planet really is. The most important message that we can impart to you about enjoying our open spaces is to leave them better than you found them. Don't be a dick. Pick up after yourself. Pick up after others that don't and when possible educate them as to why they should. Stay on designated trails, camp sites, and pathways. If you take it with you, bring it back with you. There are no excuses.

Manufacture responsibly. We strive to produce an American made product that will perform as intended for many years and we try very hard to do that with locally sourced materials from other small businesses because relationships matter to us. When absolutely necessary we will import components for our products from other countries and we maintain strict guidelines for the companies we work with to ensure that their employees are treated with dignity and respect.

Lifetime warranty. As over-engineered as some of our products can be eventually something will break. When that happens you can rest assured that we will repair or replace the items for the life of the product to the original purchaser.

Content sharing. We love to see all the pictures and videos of our stuff in action on your rig. You can share the content via email and/or social media 24/7 and if we share it with our audience we will credit the photographers and vehicle owners whenever possible.

upTOP Overland is a US based manufacturer of off road products operating out of Colorado. All information contained in this material is the intellectual property of Relic Automotive Design, dBA upTOP Overland. Duplication, alteration, or distribution of this material without express written permission from upTOP Overland is forbidden. Just. Don't.