

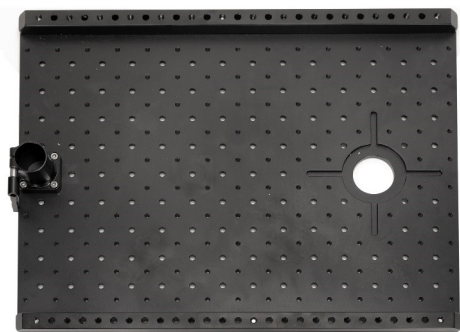
Cinebird Camera Rickshaw Support (RCSW-CNBD-01)

Assembly Manual



What's In The Box

Please inspect the contents of your shipped package to ensure you have received everything that is listed below.



Cheese Plate



2 x 21" Wheels



2 x Handle Clamps



2 x Foot rest & Ratchet



Handle Frame



2 x Jockey Wheels



Seat



Jockey Wheel Bracket



2 x Foot rest Brackets



3 x T-Type Allen key
(5mm, 5/16mm, 6mm)



Seat rod



2 x Side support Extension



2 x Wheel Brackets

All rights reserved.

No part of this document may be reproduced, stored in a retrieval system, or transmitted by any form or by any means, electronic, mechanical, photo-copying, recording, or otherwise, except as may be expressly permitted by the applicable copyright statutes or in writing by the Publisher.

Features of Rickshaw

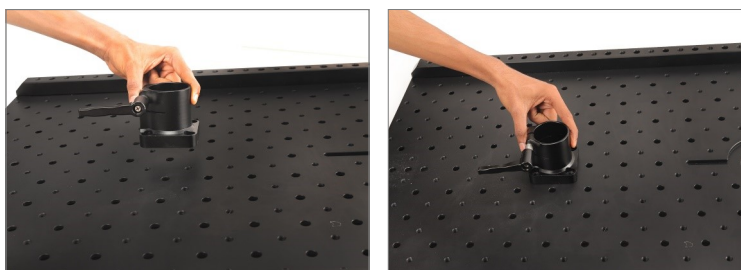


Cinebird Camera Rickshaw Setup

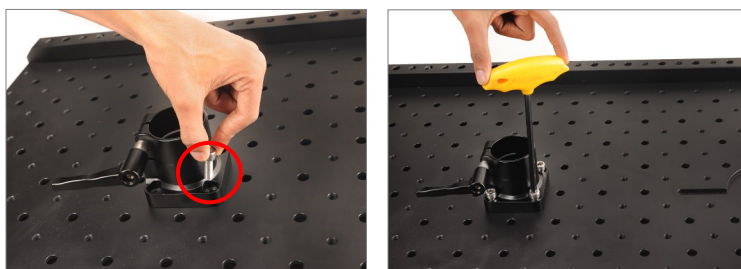
- Remove the seat mount adapter, mounted on the cheese plate, with the help of the Allen key, as shown in the image.



- Multiple threads are provided on the Cheese Plate. Adjust and mount your seat adaptor anywhere on the platform as per your needs.



- After inserting the bolt, secure it by properly re-tightening it with the help of the Allen key.



- Properly remove the bolt from the Jockey Wheel Bracket using the 5/16mm Allen key.



- Then place the Jockey Wheel Bracket by matching it with the thread hole of the Cheese Plate.



- Insert the bolts from the bottom of the Cheese Plate and properly secure them using the Allen key, as shown in the image.



- The foot rest bracket is properly attached to the Cheese Plate.



- Manually pull up the ratchet knob present on the Jockey Wheel bracket.



- Match the Jockey Wheel bracket's hole and then insert the Jockey Wheels, as shown in the image.



- Match the jockey wheel brackets hole and then insert the jockey wheels, as shown in the image.



- After inserting the Jockey Wheels knob, properly tighten it with the Allen key.



- To stabilize the 360° movement of the Jockey Wheels, properly insert the ratchet knob of the Jockey Wheel bracket and then secure it.



- Jockey Wheel bracket is properly attached to the Jockey Wheels.



- Remove the bolts of the Handle Clamps using the Allen key.



- Place the Clamp by matching it to the threads on the side of the Cheese Plate.



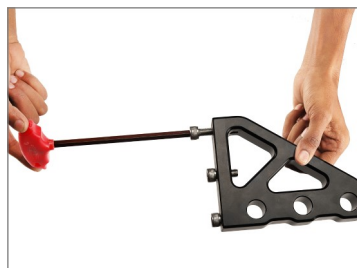
- After attaching the clamp to the Cheese Plate, insert the bolts from the bottom.



- Tighten the bolts using the Allen key and to attach the second Handle Clamp, repeat the same process given above.



- Remove all the bolts attached to the Wheel Bracket using the Allen key.



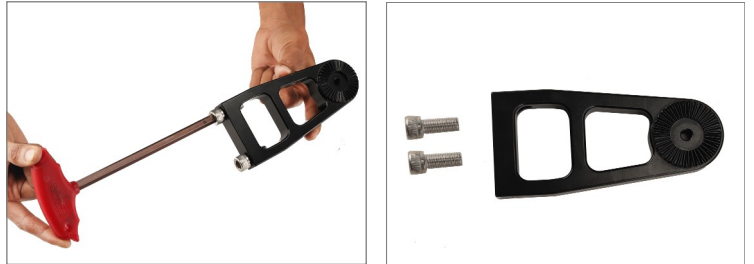
- Then place the Wheel Bracket by matching it to the threads on the side of the Cheese Plate.



- After attaching the clamp to the Cheese Plate, insert the bolts from the bottom and tighten them with the Allen key. To attach the second Handle Clamp, repeat the same process.



- Remove the bolts of the Foot Rest Brackets using the 5/16mm Allen key.



- Place the Foot Rest Bracket to the side of the Wheel Bracket and then insert the bolt after matching it with the hole at the bottom of the Cheese Plate.



- Properly tighten it with the 5/16mm Allen key and then follow the same process to attach the second Foot Rest Bracket.



- Manually remove the bolts of the wheel.

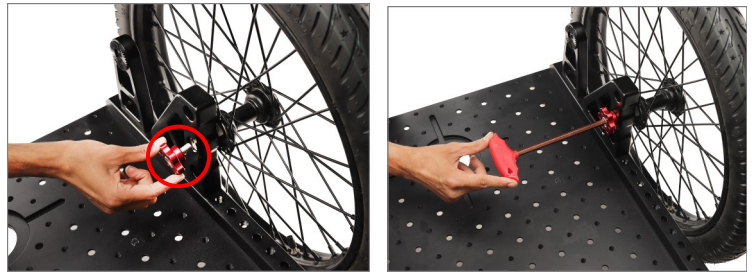


- Follow the same above process to attach the 2nd Wheel.

NOTE: The pneumatic wheels feature three height adjustment points, 5", 6" & 7", allowing the setup to adapt the height according to the rough and bumpy roads.



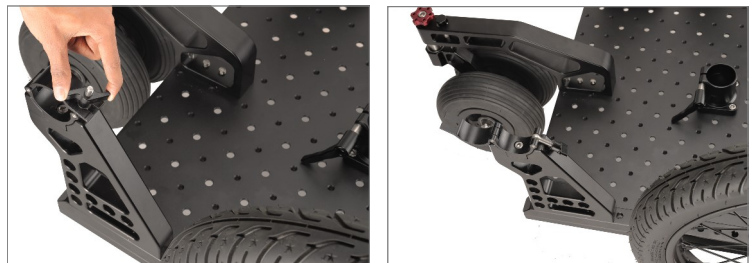
- After attaching the wheel to the wheel bracket, insert the knob and secure it properly with the help of the Allen key.



- Follow the same above process to attach the 2nd Wheel.



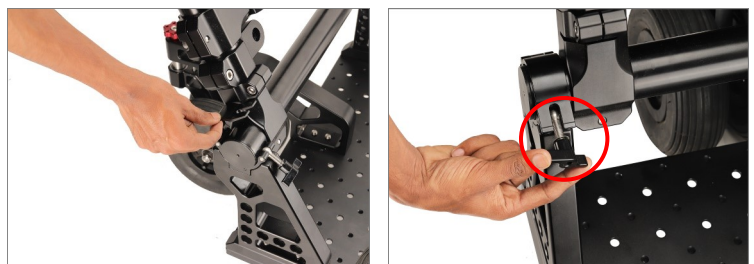
- Loosen the knob of the Handle Clamp and open it.



- Place the Handle Frame over the clamp, as shown in the image.



- After placing the Handle Frame over the handle clamp, secure it properly with the provided knob of the clamp and then tighten it.



- Similarly, following the same process tighten it properly with the second clamp's knob.



- Loosen the side bolt of the center rod of the Handle Frame with the Allen key.



- Then set the center rod position of the Handle Frame according to you and then tighten it properly with the Allen key.



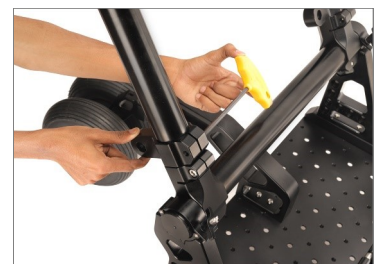
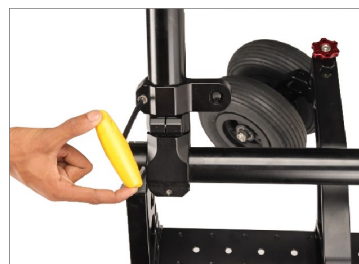
- Handle Frame's center rod position is now properly secured.



- Remove the bolts in the Side Support Extension using the Allen key.



- Loosen the bolts of the clamp in the Handle Frame.



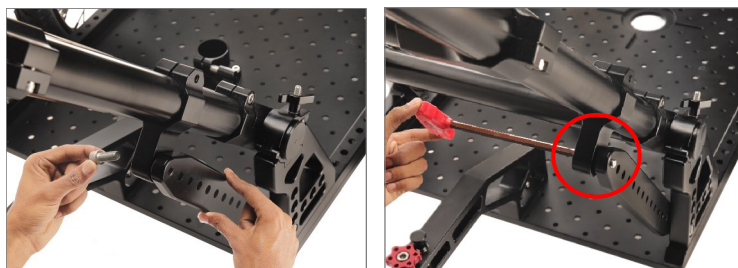
- Match the thread holes of the Handle Clamp and Side Support Extension and then insert the bolts.



- Properly tighten it with the help of the Allen key and align the Side Extension with the clamp.



- After aligning the Side Extension, insert the bolt and then properly tighten it with the Allen key.



- Follow the above same Process for attaching the second side support extension.



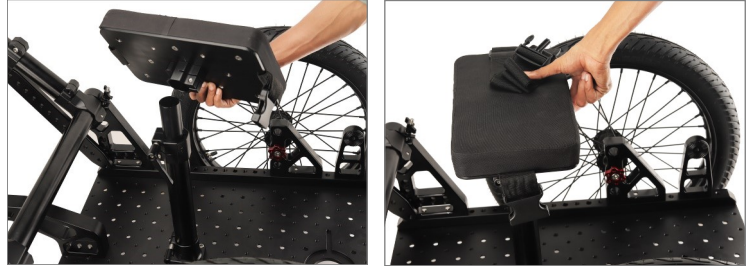
- Loosen the knob of the seat mount adapter, present on the Cheese Plate and then insert the rod on the clamp.



- After placing the seat rod over the clamp, properly secure it with the help of the ratchet knob of the clamp.



- Then mount the seat over the seat rod, as shown in the image.



- Then properly secure the bolt at the bottom of the seat using the Allen key to properly secure the seat on the seat rod.



- Adjust and properly lock the buckle of the seat strap and then tighten it, as shown in the image.

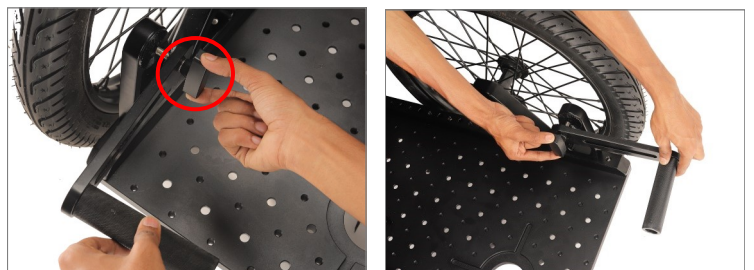


- The Seat rod has a height adjusting feature so you can easily set your seat up and down. Lock the seat to your desired position using the seat break.

NOTE: The seat is fully adjustable and rotates 360°, you can also mount it anywhere on the rickshaw platform.



- Insert the footrest by aligning it with the Foot rest Brackets thread. Then, secure it correctly with the ratchet knob, as shown in the picture.



- Follow the above same process for attaching another side Foot rest.



Bazooka & Offset Setup

- Loosen the knob of the Euro adapter **(Not Included)**, and then insert it by matching it with the hole of the cheese plate.



- After inserting the Euro Adapter **(Not Included)**, re-tighten the knob of the adapter from the bottom part of the cheese plate.



- After loosening the ratchet knob of the Bazooka **(Not Included)**, mount it over the Euro Adapter.



- Properly secure the ratchet knob of the Bazooka **(Not Included)** after re-tightening it again.



- Loosen the ratchet knob of the offset bracket **(Not Included)** and then mount it on Bazooka.



- Properly re-tighten the ratchet knob of the offset bracket.



- Loosen the castle ring of the Fluid Head **(Not Included)** and remove it.



- Align the Fluid Head on the Offset Adapter and then insert it.



- Re-tighten the castle ring at the bottom of the Fluid Head to properly secure it.



- Remove the plate by pushing the push-pin button of the Fluid Head **(Not Included)** and attach the plate to the bottom of the camera **(Not Included)**, and then mount it by sliding it on the top of the Fluid Head.



- Camera **(Not Included)** is now properly attached to the Fluid Head **(Not Included)**.



**YOUR PROAIM CINEBIRD CAMERA RICKSHAW SUPPORT ALL
DRESSED UP AND READY TO GO!**



(SHOWN WITH OPTIONAL ACCESSORIES)

Warranty: We offer one year warranty for our products from date of purchase. Within this period of time, we will repair it without charge for labor or parts. Warranty doesn't cover transportation costs nor does it cover a product subjected to misuse or accidental damage. Warranty repairs are subjected to inspection and evaluation by us.

Liability: We are not liable for damage caused by products that we do not supply or from mishandling in transit, accident, misuse, neglect, lack of care of the product, or service by anyone other than our company.

Contact Us: In case of any kind of dissatisfaction, please Contact us immediately and we promise our utmost support and care until you use our product.