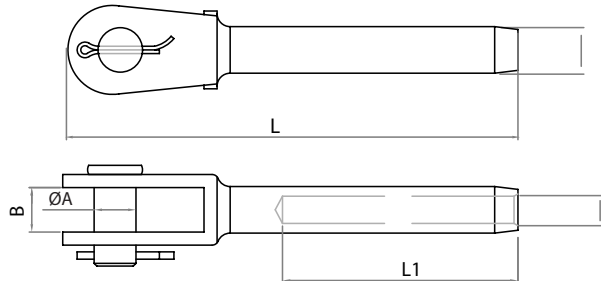


PRODUCT DATA SHEET



PRODUCT - DATA

SF7803
Swage fork



Kinzi Terminals & Turnbuckles

| SF7803 SS316 | SIZE | ØA (mm) | ØA (inch) | B (mm) | B (inch) | ØD (mm) | ØD (inch) | DiaØ- Cable (mm) | DiaØ- Cable (inch) | ØF (mm) | ØF (inch) | L (mm) | L (inch) | L1 (mm) | L1 (inch) | Accessory | Unit weight (kgs) | Unit weight (lb) | B.L. (kgs) | B.L. (lb) |
|-----------------|-------|------------|--------------|-----------|-------------|------------|--------------|------------------------|--------------------------|------------|--------------|-----------|-------------|------------|--------------|------------|-------------------------|------------------------|---------------|--------------|
| 6780-3002 | 2.00 | 5.00 | 0.20 | 7.00 | 0.28 | 5.53 | 0.22 | 2 | 5/64" | 2.20 | 0.09 | 53.50 | 2.11 | 32 | 1.26 | Ring | 0.01 | 0.02 | 700 | 1,540 |
| 6780-3025 | 2.50 | 5.00 | 0.20 | 7.00 | 0.28 | 5.53 | 0.22 | 2.5 | 3/32" | 2.70 | 0.11 | 62.00 | 2.44 | 35 | 1.38 | Ring | 0.02 | 0.04 | 700 | 1,540 |
| 6780-3003 | 3.00 | 6.00 | 0.24 | 8.00 | 0.31 | 6.35 | 0.25 | 3 | 1/8" | 3.30 | 0.13 | 68.00 | 2.68 | 38 | 1.50 | Ring | 0.02 | 0.04 | 1,250 | 2,750 |
| 6780-3004 | 4.00 | 8.00 | 0.31 | 11.00 | 0.43 | 7.54 | 0.30 | 4 | 5/32" | 4.30 | 0.17 | 77.00 | 3.03 | 45 | 1.77 | Ring | 0.05 | 0.11 | 1,800 | 3,960 |
| 6780-3005 | 5.00 | 9.00 | 0.35 | 12.00 | 0.47 | 9.12 | 0.36 | 5 | 3/16" | 5.30 | 0.21 | 87.00 | 3.43 | 51 | 2.01 | Ring | 0.07 | 0.15 | 2,650 | 5,830 |
| 6780-3006 | 6.00 | 12.00 | 0.47 | 14.50 | 0.57 | 12.54 | 0.49 | 6 | 1/4" | 6.35 | 0.25 | 109.00 | 4.29 | 64 | 2.52 | Ring | 0.15 | 0.33 | 4,000 | 8,800 |
| 6780-3007 | 7.00 | 12.00 | 0.47 | 14.50 | 0.57 | 14.30 | 0.56 | 7 | 1/4" | 7.30 | 0.29 | 116.00 | 4.57 | 70 | 2.76 | Ring | 0.17 | 0.37 | 5,800 | 12,760 |
| 6780-3008 | 8.00 | 14.28 | 0.56 | 15.00 | 0.59 | 16.13 | 0.64 | 8 | 5/16" | 8.40 | 0.33 | 148.00 | 5.83 | 80 | 3.15 | Cotter pin | 0.29 | 0.64 | 6,500 | 14,300 |
| 6780-3010 | 10.00 | 16.00 | 0.63 | 17.00 | 0.67 | 17.85 | 0.70 | 10 | 3/8" | 10.50 | 0.41 | 154.00 | 6.06 | 90 | 3.54 | Cotter pin | 0.36 | 0.79 | 9,000 | 19,800 |
| 6780-3012 | 12.00 | 19.00 | 0.75 | 20.00 | 0.79 | 21.44 | 0.84 | 12 | 1/2" | 12.50 | 0.49 | 176.00 | 6.93 | 105 | 4.13 | Cotter pin | 0.60 | 1.32 | 11,000 | 24,200 |
| 6780-3114 | 14.00 | 25.00 | 0.98 | 30.00 | 1.18 | 25.00 | 0.98 | 14 | 9/16" | 14.90 | 0.59 | 257.00 | 10.12 | 140 | 5.51 | Cotter pin | 1.36 | 2.99 | 13,000 | 28,600 |
| 6780-3116 | 16.00 | 25.00 | 0.98 | 30.00 | 1.18 | 28.17 | 1.11 | 16 | 5/8" | 17.10 | 0.67 | 281.00 | 11.06 | 160 | 6.30 | Cotter pin | 1.57 | 3.45 | 18,000 | 39,600 |
| 6780-3332 | 3/32" | 5.00 | 0.20 | 7.00 | 0.28 | 5.53 | 0.22 | 2.5 | 3/32" | 2.70 | 0.11 | 62.00 | 2.44 | 35 | 1.38 | Ring | 0.02 | 0.04 | 700 | 1,540 |
| 6780-3718 | 1/8" | 6.00 | 0.24 | 8.00 | 0.31 | 6.35 | 0.25 | 3 | 1/8" | 3.50 | 0.14 | 68.00 | 2.68 | 38 | 1.50 | Ring | 0.02 | 0.04 | 1,250 | 2,750 |
| 6780-3532 | 5/32" | 8.00 | 0.31 | 11.00 | 0.43 | 7.54 | 0.30 | 4 | 5/32" | 4.30 | 0.17 | 77.00 | 3.03 | 45 | 1.77 | Ring | 0.04 | 0.09 | 1,800 | 3,960 |
| 6780-3316 | 3/16" | 9.00 | 0.35 | 12.00 | 0.47 | 9.12 | 0.36 | 5 | 3/16" | 5.10 | 0.20 | 87.00 | 3.43 | 51 | 2.01 | Ring | 0.07 | 0.15 | 2,650 | 5,830 |
| 6780-3732 | 7/32" | 9.00 | 0.35 | 12.00 | 0.47 | 10.84 | 0.43 | 5.6 | 7/32" | 5.90 | 0.23 | 93.00 | 3.66 | 57 | 2.24 | Ring | 0.13 | 0.29 | 3,000 | 6,600 |
| 6780-3714 | 1/4" | 12.00 | 0.47 | 14.50 | 0.57 | 12.54 | 0.49 | 6 | 1/4" | 6.70 | 0.26 | 109.00 | 4.29 | 64 | 2.52 | Ring | 0.15 | 0.33 | 4,000 | 8,800 |
| 6780-3615 | 5/16" | 14.28 | 0.56 | 15.00 | 0.59 | 16.13 | 0.64 | 8 | 5/16" | 8.40 | 0.33 | 148.00 | 5.83 | 80 | 3.15 | Cotter pin | 0.29 | 0.64 | 7,250 | 15,950 |
| 6780-3318 | 3/8" | 16.00 | 0.63 | 17.00 | 0.67 | 17.85 | 0.70 | 10 | 3/8" | 9.90 | 0.39 | 154.00 | 6.06 | 90 | 3.54 | Cotter pin | 0.37 | 0.81 | 8,400 | 18,480 |

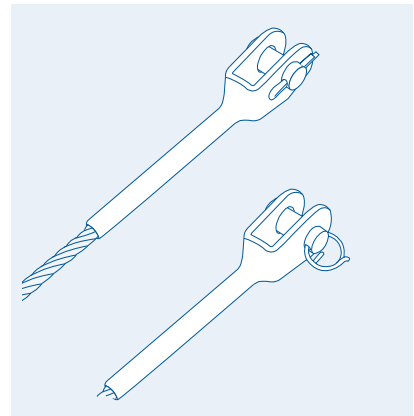
TECHNICAL DATA

Forging material : AISI316 - DIN 1.4401

Production : SF7803 - Jaw - Cast, Pin - Forged
Accessory - See chart

Surface treatment : "E.P." (Electro polished)

100%
RECYCLABLE



CODE: SF7803

KINZI TERMINALS & TURNBUCKLES