

PRODUCT DATA SHEET



PRODUCT - DATA

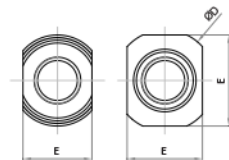
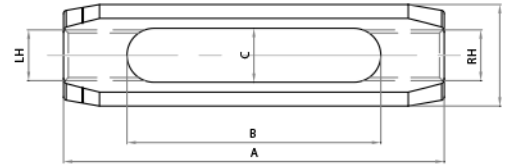
SRA3

Cross connector

SRA3

Technical Data

Forging material : AIS316 - DIN 1.4401
 Production : SRA3 - Bar material
 Surface treatment : "M.F." (Matt finished)
 : "E.P." (Electro polished)



SIZE M16-M48 BAR MACHINE SIZE M52 & M64 CASTING DUPLEX 4A



SRA3		SIZE M	Surface Treatment	A (mm)	A (inch)	B (mm)	B (inch)	C (mm)	C (inch)	ØD (mm)	ØD (inch)	E (mm)	E (inch)	Unit Weight (kg.)	Unit Weight (lb)	Tensile Load (kN)
SS316	Duplex 4A	(mm)														
SRA3-0016	-	M16	M.F.	120	4.72	80	3.15	17	0.67	32	1.26	22	0.87	0.33	0.73	87
SRA3-0020	-	M20	M.F.	148	5.83	100	3.94	22	0.87	40	1.57	30	1.18	0.72	1.58	137
SRA3-0022	-	M22	M.F.	165	6.50	117	4.61	24	0.94	44	1.73	32	1.26	0.85	1.87	169
SRA3-0024	-	M24	M.F.	180	7.09	128	5.04	26	1.02	46	1.81	35	1.38	1.00	2.20	197
SRA3-0030	-	M30	M.F.	195	7.68	135	5.31	32	1.26	56	2.20	40	1.57	1.45	3.19	314
SRA3-0033	-	M33	M.F.	215	8.46	149	5.87	35	1.38	65	2.56	48	1.89	2.40	5.28	388
SRA3-0036	-	M36	M.F.	234	9.21	146	5.75	38	1.50	72	2.83	50	1.97	3.11	6.84	457
SRA3-0039	-	M39	M.F.	258	10.16	162	6.38	41	1.61	76	2.99	56	2.20	4.07	8.95	546
SRA3-0042	-	M42	M.F.	276	10.87	172	6.77	44	1.73	81	3.19	60	2.36	4.73	10.41	627
SRA3-0045	-	M45	M.F.	294	11.57	183	7.20	47	1.85	86	3.39	65	2.56	6.05	13.31	731
SRA3-0048	-	M48	M.F.	310	12.20	194	7.64	50	1.97	96	3.78	70	2.76	7.60	16.72	824
-	SRA3-0052	M52	E.P.	345	13.58	225	8.86	55	2.17	110	4.33	80x90	3.14x3.54	9.60	21.12	984
-	SRA3-0056	M56	E.P.	370	14.57	250	9.84	60	2.36	120	4.72	88x95	3.46x3.74	11.40	25.08	1,136
-	SRA3-0060	M60	E.P.	355	13.98	231	9.09	65	2.56	124	4.88	90x105	3.54x4.13	13.10	28.82	1,322
-	SRA3-0064	M64	E.P.	412	16.22	268	10.55	70	2.76	140	5.51	100x110	3.93x4.33	17.20	37.84	1,498

CODE: SRA3

KINZI DATA SHEET

**100%
RECYCLABLE**

WWW.KINZI.COM