

PRODUCT DATA SHEET



PRODUCT - DATA

SPE/SMALL/EP

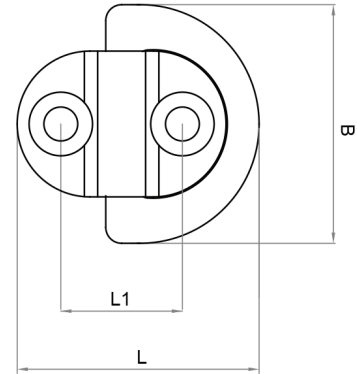
Small padeyes with single rings

SPE/SMALL/EP

Technical Data

Casting Material : AIS316-DIN 1.4408
 Production : SPE/SMALL/EP
 Body - Cast
 D-Ring - Bar
 Surface treatment : "E.P." (Electro polished)

Note : Standard safety factor for working load is 1/4 of breaking load



M Metric **SPE/SMALL/EP**
Small padeyes with single rings

SPE/SMALL/EP	SIZE	B (mm)	B (inch)	L1 (mm)	L1 (inch)	L (mm)	L (inch)	Screw use (mm)	Unit weight (kgs)	Unit weight (lb)	B.L. (kgs)	B.L. (lb)
SS316												
6106-4545	small	45	1.77	23	0.91	45.8	1.8	M6	0.06	0.13	1,800	3,960

CODE: SPE/SMALL/EP

KINZI DATA SHEET

100%
RECYCLABLE

WWW.KINZI.COM