

PRODUCT DATA SHEET



PRODUCT - DATA

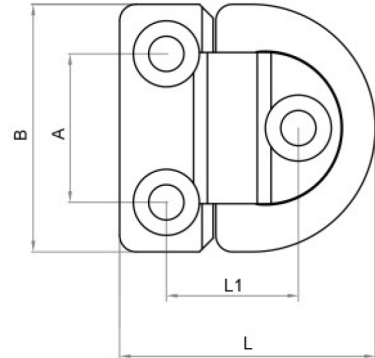
SPE/SINGLE/EP
Padeyes with single rings

SPE/SINGLE/EP

Technical Data

Casting Material : AIS316-DIN 1.4408
 Production : SPE/SINGLE/EP
 Body - Cast
 D-Ring - Bar
 Surface treatment : "E.P." (Electro polished)

Note : Standard safety factor for working load is 1/4 of breaking load



M Metric **SPE/SINGLE/EP**
Padeyes with single rings

SPE/SINGLE/EP SS316	SIZE	A (mm)	A (inch)	B (mm)	B (inch)	L (mm)	L (inch)	L1 (mm)	L1 (inch)	Screw use (mm)	Unit weight (kgs)	Unit weight (lb)	B.L. (kgs)	B.L. (lb)
6106-4546	6	27	1.06	45	1.77	46.5	1.83	24.0	0.94	M6	0.08	0.18	2,200	4,840
6108-5961	8	35	1.38	59	2.32	61.0	2.40	29.5	1.16	M8	0.18	0.40	4,000	8,800
6101-0757	10	45	1.77	75	2.95	77.0	3.03	39.0	1.54	M10	0.37	0.81	7,000	15,400

CODE: SPE/SINGLE/EP

KINZI DATA SHEET

100%
RECYCLABLE

WWW.KINZI.COM