

# PRODUCT DATA SHEET



## PRODUCT - DATA

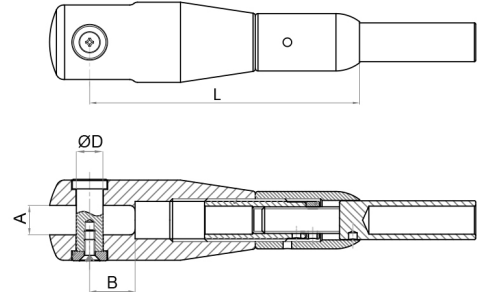
### SHB/TS

Hybrid terminal swage

### SHB/TS

#### Technical Data

- Fork, End cap : Casting material  
AISI316, EN 1.4408
- Pin Terminal : Forging material  
AISI316-DIN 1.4401
- Surface treatment : "M.F." (Matte finished)
- MBL : Minimum Breaking Load  
before cable assembly.
- Limit Tension : Recommended maximum  
load for a tension member.  
All other applications should  
consider ¼ of MBL\*.



**M** SHB/TS  
Metric Hybrid terminal swage

SHB/TS SS316	SIZE ØCable (mm)	A (mm)	A (inch)	B (mm)	B (inch)	ØD (mm)	ØD (inch)	L (mm)	L (inch)	ADJ* (mm)	Unit weight (kgs)	Unit weight (lb)	MBL (kN)
HBT613-36516NB	3	6.5	0.25	12	0.47	5	0.20	58	2.28	± 6	0.06	0.13	4.9
HBT613-46516NB	4	6.5	0.25	12	0.47	5	0.20	58	2.28	± 6	0.06	0.13	4.9
HBT613-68229NB	6	8.0	0.31	13	0.51	6	0.24	79	3.11	± 7	0.16	0.35	11.8
HBT613-89251NB	8	9.0	0.35	14	0.55	9	0.35	88	3.46	± 8	0.23	0.51	21.6
HBT613-10113NB	10	11.0	0.43	17	0.67	10	0.39	101	3.98	± 12	0.37	0.81	32.4
HBT613-12143NB	12	14.0	0.55	23	0.91	12	0.47	116	4.57	± 12	0.56	1.23	50.0

SHB/TS SS316	SIZE ØCable (inch)	A (mm)	A (inch)	B (mm)	B (inch)	ØD (mm)	ØD (inch)	L (mm)	L (inch)	ADJ* (mm)	Unit weight (kgs)	Unit weight (lb)	MBL (kN)
HBTS-0108NB	1/8"	6.5	0.25	12	0.47	5	0.20	58	2.28	± 6	0.06	0.13	4.9
HBTS-0532NB	5/32"	6.5	0.25	12	0.47	5	0.20	58	2.28	± 6	0.06	0.13	4.9
HBTS-0104NB	1/4"	8.0	0.31	13	0.51	6	0.24	79	3.11	± 7	0.16	0.35	11.8
HBTS-0516NB	5/16"	9.0	0.35	14	0.55	9	0.35	88	3.46	± 8	0.23	0.51	21.6
HBTS-0308NB	3/8"	11	0.43	17	0.67	10	0.39	101	3.98	± 12	0.37	0.81	32.4
HBTS-0102NB	1/2"	14	0.55	23	0.91	12	0.47	116	4.57	± 12	0.56	1.23	50.0

CODE: SHB/TS

KINZI DATA SHEET

**100%**  
**RECYCLABLE**

[WWW.KINZI.COM](http://WWW.KINZI.COM)