

# PRODUCT DATA SHEET



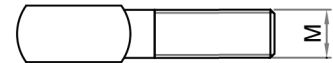
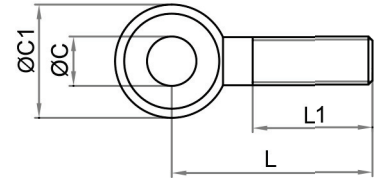
## PRODUCT - DATA

**SFDIN444FT**  
Eye bolt (full thread)

### SFDIN444FT

**Technical Data**

Casting material : AISI316 - DIN 1.4408  
 Forging material : AISI316 - DIN 1.4401  
 Production : SFDIN444FT- Bolt - Forged  
 Surface treatment : "E.P." (Electro polished)



**M** Metric **SFDIN444FT**  
Eye bolt (full thread)

SFDIN444FT		SIZE	ØC (mm)	ØC (inch)	ØC1 (mm)	ØC1 (inch)	L (mm)	L (inch)	L1 (mm)	L1 (inch)	M (mm)	Unit weight (kgs)	Unit weight (lb)
SS316													
2444-2612	6*19	6.2	0.24	14	0.55	19	0.75	10	0.39	M6	0.01	0.02	
2444-0625	6*25	6.2	0.24	14	0.55	25	0.98	15	0.59	M6	0.01	0.02	
2444-2640	6*40	6.2	0.24	14	0.55	40	1.57	30	1.18	M6	0.01	0.02	
2444-2850	8*50	8.2	0.32	18	0.71	50	1.97	40	1.57	M8	0.02	0.04	
2444-2160	10*60	10.2	0.40	20	0.79	60	2.36	50	1.97	M10	0.05	0.11	
2444-2250	12*50	12.2	0.48	25	0.98	50	1.97	35	1.38	M12	0.06	0.13	
2444-2280	12*80	12.2	0.48	25	0.98	80	3.14	65	2.56	M12	0.08	0.18	

CODE: SFDIN444FT

KINZI DATA SHEET

**100%**  
**RECYCLABLE**

[WWW.KINZI.COM](http://WWW.KINZI.COM)