

PRODUCT DATA SHEET



PRODUCT - DATA

SF875
S-hook (type 2)

SF875

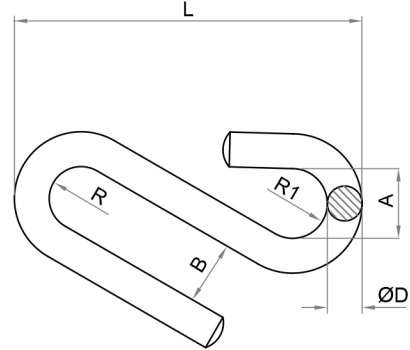
Technical Data

Forging material : AISI304 - DIN 1.4301
 AISI316 - DIN 1.4401
 Production : SF875 - Hook - Forged
 Surface treatment : "E.P." (Electro polished)

Note : Standard safety factor for working load is 1/4 of breaking load



SF875
S-hook (type 2)



SF875		SIZE	A		B		ØD		L		R		R1		Unit weight (kgs)	Unit weight (lb)	B.L. (kgs)	B.L. (lb)
SS304	SS316		(mm)	(inch)	(mm)	(inch)	(mm)	(inch)	(mm)	(inch)	(mm)	(inch)	(mm)	(inch)				
4875-0400	6875-0004	4	8	0.31	7.5	0.30	4	0.16	40	1.57	4.0	0.16	4.0	0.16	0.01	0.02	60	132
4875-0005	6875-0005	5	9	0.35	8.5	0.33	5	0.20	50	1.97	4.5	0.18	4.5	0.18	0.02	0.04	150	330
4875-0006	6875-0006	6	12	0.47	11.0	0.43	6	0.24	60	2.36	6.0	0.24	6.0	0.24	0.03	0.07	200	440
4875-0008	6875-0008	8	16	0.63	15.0	0.59	8	0.31	75	2.95	8.0	0.31	8.0	0.31	0.07	0.15	400	880
4875-0010	6875-0010	10	18	0.71	18.0	0.71	10	0.39	100	3.94	9.0	0.35	9.0	0.35	0.13	0.29	800	1,760

CODE: SF875

KINZI DATA SHEET

100%
RECYCLABLE

WWW.KINZI.COM