

PRODUCT DATA SHEET



PRODUCT - DATA

SF8190
Light pulley block (type A)

SF8190

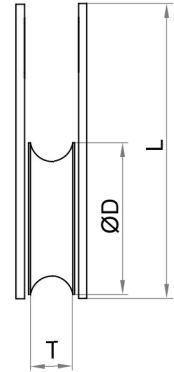
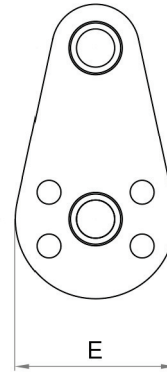
Technical Data

Stamping material : AISI304 - DIN 1.4301
 Production : SF8190
 Sheave - Nylon
 Block - Sheet
 Rivet - Pipe
 Surface treatment : "M.F." (Matte finished)

Note : Standard safety factor for working load is 1/4 of breaking load.



Metric SF8190
Light pulley block (type A)



SF8190 SS304	SIZE	ØD (mm)	ØD (inch)	E (mm)	E (inch)	L (mm)	L (inch)	T (mm)	T (inch)	Unit weight (kgs)	Unit weight (lb)	B.L. (kgs)	B.L. (lb)
4819-0019	19	19.8	0.77	20	0.79	37	1.46	6	0.24	0.01	0.02	300	660

CODE: SF8190

KINZI DATA SHEET

100%
RECYCLABLE

WWW.KINZI.COM