

PRODUCT DATA SHEET



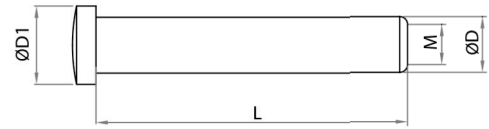
PRODUCT - DATA

SF7806TR

Technical Data

Casting material : AISI316 - DIN 1.4401
Surface treatment : "E.P." (Electro polished)

Note : Standard safety factor for working load is 1/4 of breaking load.



SF7806TR
Inside threaded domehead
(right hand thread)

SF7806TR SS316	SIZE M (mm)	ØD (mm)	ØD (inch)	ØD1 (mm)	ØD1 (inch)	L (mm)	L (inch)	Unit weight (kgs)	Unit weight (lb)	B.L. (kgs)	B.L. (lb)
6780-6525	M5	7.13	0.28	10.0	0.39	40	1.57	0.01	0.02	750	1,650
6780-6630	M6	8.00	0.31	11.5	0.45	45	1.77	0.01	0.02	1,400	3,080
6780-6835	M8	11.00	0.43	14.0	0.55	55	2.17	0.03	0.07	2,200	4,840

CODE: SF7806TR

KINZI DATA SHEET

100%
RECYCLABLE

WWW.KINZI.COM