

# PRODUCT DATA SHEET



## PRODUCT - DATA

**SF7803S**  
Swage fork

### SF7803S

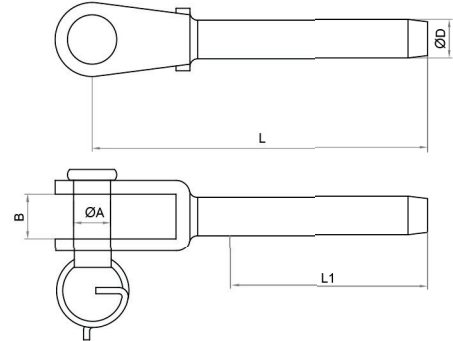
#### Technical Data

Forging material : AISI316 - DIN 1.4401  
 Production : SF7803S  
 Jaw - Cast  
 Pin - Forged  
 Accessory - Ring  
 Surface treatment : "E.P." (Electro polished)

Note : Standard safety factor for working load is 1/4 of breaking load.



**M** SF7803S  
Metric Swage fork



SF7803S SS316	SIZE ØCable (mm)	ØA (mm)	ØA (inch)	B (mm)	B (inch)	ØD (mm)	ØD (inch)	L (mm)	L (inch)	L1 (mm)	L1 (inch)	Unit weight (kgs)	Unit weight (lb)	B.L. (kgs)	B.L. (lb)
6780-3903	3	5	0.20	7	0.28	5.53	0.22	53.5	2.11	32	1.26	0.020	0.04	1,250	2,750
6780-3904	4	6	0.24	7	0.28	5.53	0.22	62.0	2.44	35	1.38	0.029	0.06	1,250	2,750
6780-3905	5	8	0.31	8	0.31	6.35	0.25	68.0	2.68	38	1.50	0.054	0.12	2,300	5,060
6780-3906	6	9	0.35	11	0.43	7.54	0.30	77.0	3.03	45	1.77	0.060	0.13	3,220	7,084
6780-3908	8	12	0.47	12	0.47	9.12	0.36	87.0	3.43	51	2.01	0.241	0.53	6,000	13,200

CODE: SF7803S

KINZI DATA SHEET

**100%**  
**RECYCLABLE**

**WWW.KINZI.COM**