

PRODUCT DATA SHEET



PRODUCT - DATA

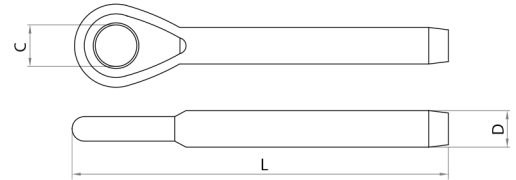
SF7802
Eye terminal

SF7802

Technical Data

Forging material : AISI316 - DIN 1.4401
Production : SF7802 - Eye - Forged
Surface treatment : "M.F." (Matte finished)

Note : Standard safety factor for working load is 1/4 of breaking load.



SF7802 SS316	SIZE ØCable (mm/inch)	ØC (mm)	ØC (inch)	ØD (mm)	ØD (inch)	L (mm)	L (inch)	Unit weight (kgs)	Unit weight (lb)	B.L. (kgs)	B.L. (lb)
6780-2202	2.0	5.5	0.22	5.53	0.22	56.0	2.20	0.01	0.02	850	1,870
6780-2225	2.5	5.5	0.22	5.53	0.22	56.0	2.20	0.01	0.02	850	1,870
6780-2203	3.0	6.5	0.26	6.35	0.25	62.0	2.44	0.01	0.02	1,000	2,200
6780-2204	4.0	8.5	0.33	7.54	0.30	77.0	3.03	0.02	0.04	1,350	2,970
6780-2205	5.0	10.5	0.41	9.12	0.36	87.0	3.43	0.04	0.09	2,500	5,500
6780-2306	6.0	13.0	0.51	12.54	0.49	107.5	4.23	0.09	0.20	4,500	9,900
6780-2208	8.0	14.5	0.57	16.13	0.64	133.0	5.24	0.17	0.37	6,700	14,740
6780-2210	10.0	16.3	0.64	17.85	0.70	159.5	6.28	0.24	0.53	7,800	17,160
6780-2212	12.0	19.3	0.76	21.44	0.84	180.0	7.09	0.39	0.86	9,000	19,800
6780-2733	3/32"	5.5	0.22	5.53	0.22	56.0	2.20	0.01	0.02	850	18,700
6780-2718	1/8"	6.5	0.26	6.35	0.25	62.0	2.44	0.01	0.02	1,000	2,200
6780-2753	5/32"	8.5	0.33	7.54	0.30	77.0	3.03	0.02	0.04	1,350	2,970
6780-2731	3/16"	10.5	0.41	9.12	0.36	87.0	3.43	0.04	0.09	2,500	5,500
6780-2714	1/4"	13.0	0.51	12.54	0.49	107.5	4.23	0.08	0.18	4,500	9,900
6780-2561	5/16"	14.5	0.57	16.13	0.64	133.0	5.24	0.17	0.37	6,700	14,740
6780-2381	3/8"	16.3	0.64	17.85	0.70	159.5	6.28	0.25	0.55	7,800	17,160
6780-2712	1/2"	19.3	0.76	21.44	0.84	180.0	7.09	0.35	0.77	9,000	19,800

CODE: SF7802

KINZI DATA SHEET

100%
RECYCLABLE

WWW.KINZI.COM