

# PRODUCT DATA SHEET



## PRODUCT - DATA

**SF3250**  
Dee ring

### SF3250

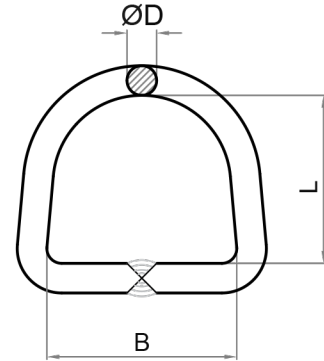
#### Technical Data

Forging material : AISI304 - DIN 1.4301/  
AISI316 - DIN 1.4401  
Production : SF3250 - Ring - Welded  
Surface treatment : "E.P." (Electro polished)

Note : Breaking load is described as the load point where welding fails. Deformation load is however lower and is dependent on the diameter of rod and circumference of ring. A general rule is to assume deformation load at around 1/5 of breaking load.



**M** SF3250  
Metric Dee ring



SF3250		SIZE	B (mm)	B (inch)	ØD (mm)	ØD (inch)	L (mm)	L (inch)	Unit weight (kgs)	Unit weight (lb)	B.L. (kgs)	B.L. (lb)
SS304	SS316											
4325-0315	6325-0315	3*15	16	0.63	3	0.12	14	0.55	0.01	0.02	600	1,320
4325-0320	6325-0320	3*20	20	0.79	3	0.12	17	0.67	0.01	0.02	600	1,320
4325-0325	6325-0325	3*25	26	1.02	3	0.12	22	0.87	0.01	0.02	600	1,320
4325-0330	6325-0330	3*30	30	1.18	3	0.12	25	0.98	0.01	0.02	600	1,320
4325-0420	6325-0420	4*20	20	0.79	4	0.16	17	0.67	0.01	0.02	800	1,760
4325-0425	6325-0425	4*25	27	1.06	4	0.16	22	0.87	0.01	0.02	800	1,760
4325-0430	6325-0430	4*30	30	1.18	4	0.16	25	0.98	0.01	0.02	800	1,760
4325-0525	6325-0525	5*25	26	1.02	5	0.20	22	0.87	0.02	0.04	1,000	2,200
4325-0530	6325-0530	5*30	30	1.18	5	0.20	25	0.98	0.02	0.04	1,000	2,200
4325-0535	6325-0535	5*35	35	1.38	5	0.20	30	1.18	0.02	0.04	1,000	2,200
4325-0540	6325-0540	5*40	39	1.54	5	0.20	34	1.34	0.02	0.04	1,000	2,200
4325-0545	6325-0545	5*45	45	1.77	5	0.20	38	1.50	0.02	0.04	1,000	2,200
4325-0550	6325-0550	5*50	52	2.05	5	0.20	43	1.69	0.03	0.07	1,000	2,200
4325-0560	6325-0560	5*60	60	2.36	5	0.20	51	2.01	0.03	0.07	1,000	2,200
4325-0625	6325-0625	6*25	26	1.02	6	0.24	22	0.87	0.02	0.04	1,800	3,960
4325-0630	6325-0630	6*30	30	1.18	6	0.24	25	0.98	0.02	0.04	1,800	3,960
4325-0635	6325-0635	6*35	35	1.38	6	0.24	30	1.18	0.03	0.07	1,800	3,960
4325-0640	6325-0640	6*40	39	1.54	6	0.24	34	1.34	0.03	0.07	1,800	3,960
4325-0650	6325-0650	6*50	51	2.01	6	0.24	43	1.69	0.04	0.09	1,800	3,960
4325-0660	6325-0660	6*60	60	2.36	6	0.24	51	2.01	0.05	0.11	1,800	3,960
4325-0750	6325-0750	7*50	51	2.01	7	0.28	43	1.69	0.06	0.13	2,200	4,840
4325-0845	6325-0845	8*45	45	1.77	8	0.31	38	1.50	0.06	0.13	2,800	6,160
4325-0850	6325-0850	8*50	51	2.01	8	0.31	43	1.69	0.07	0.15	2,800	6,160
4325-0855	6325-0855	8*55	55	2.17	8	0.31	47	1.85	0.08	0.18	2,800	6,160
4325-0860	6325-0860	8*60	60	2.36	8	0.31	51	2.01	0.08	0.18	2,800	6,160
4325-0870	6325-0870	8*70	70	2.76	8	0.31	60	2.36	0.10	0.22	2,800	6,160
4325-0880	6325-0880	8*80	80	3.15	8	0.31	68	2.68	0.10	0.22	2,800	6,160

**100%**  
**RECYCLABLE**

**WWW.KINZI.COM**

CODE: SF3250

KINZI DATA SHEET