

PRODUCT DATA SHEET



PRODUCT - DATA

SF312PLBD/MIN

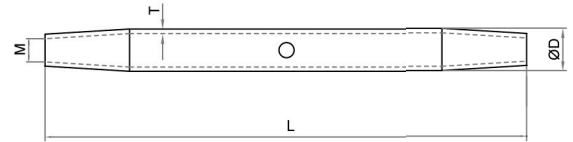
Long mini turnbuckle pipe

SF312PLBD/MIN

Technical Data

Forging material : AISI316 - DIN 1.4401
 Production : SF312PLBD/MIN - Pipe - Forged
 Surface treatment : "M.F." (Matte finished)

Note : Standard safety factor for working load
 is 1/4 of breaking load.



M SF312PLBD/MIN
 Metric Long mini turnbuckle pipe

SF312PLBD/MIN SS316	SIZE	ØD (mm)	ØD (inch)	L (mm)	L (inch)	M (mm)	T (mm)	T (inch)	Unit weight (kgs)	Unit weight (lb)	B.L. (kgs)	B.L. (lb)
6312-3504	4	7.0	0.28	80	3.15	M4	1.0	0.04	0.01	0.02	360	792
6312-3505	5	8.0	0.31	100	3.94	M5	1.0	0.04	0.02	0.04	750	1,650
6312-3506	6	12.5	0.49	120	4.72	M6	1.5	0.06	0.05	0.11	1,250	2,750
6312-3508	8	13.5	0.53	120	4.72	M8	2.0	0.08	0.06	0.13	2,200	4,840

CODE: SF312PLBD/MIN

KINZI DATA SHEET

100%
RECYCLABLE

WWW.KINZI.COM