

PRODUCT DATA SHEET



PRODUCT - DATA

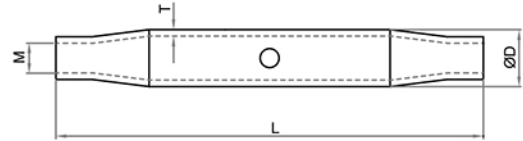
SF312PBD
Turnbuckle pipe

SF312PBD

Technical Data

Forging material : AISI316 - DIN 1.4401
Production : SF312PBD - Pipe - Forged
Surface treatment : "M.F." (Matte finished)

Note : Standard safety factor for working load is 1/4 of breaking load



SF312PBD SS316	SIZE	ØD (mm)	ØD (inch)	L (mm)	L (inch)	M (mm/inch)	T (mm)	T (inch)	Unit weight (kgs)	Unit weight (lb)	B.L. (Kgs)	B.L. (lb)
6312-0905	5	8.0	0.31	80	3.15	M5	1.0	0.04	0.01	0.02	750	1,650
6312-0906	6	12.5	0.49	90	3.54	M6	1.5	0.06	0.03	0.07	1,400	3,080
6312-0908	8	13.5	0.53	105	4.13	M8	2.0	0.08	0.05	0.11	2,400	5,280
6312-0910	10	17.5	0.69	125	4.92	M10	2.3	0.09	0.09	0.20	3,450	7,590
6312-0912	12	21.5	0.85	150	5.91	M12	2.5	0.10	0.16	0.35	5,000	11,000
6312-0914	14	21.5	0.85	165	6.50	M14	2.5	0.10	0.18	0.40	6,500	14,300
6312-0916	16	27.0	1.06	190	7.48	M16	3.0	0.12	0.30	0.66	8,500	18,700
6312-0920	20	34.0	1.34	210	8.27	M20	3.5	0.14	0.46	1.01	13,000	28,600
6312-0928	24	45.0	1.77	250	9.84	M24	4.0	0.16	0.90	1.98	21,000	46,200
6312-9104	1/4"	12.5	0.49	90	3.54	1/4"	1.5	0.06	0.03	0.07	1,400	3,080
6312-9165	5/16"	13.5	0.53	105	4.13	5/16"	2.0	0.08	0.05	0.11	2,400	5,280
6312-0983	3/8"	17.5	0.69	125	4.92	3/8"	2.3	0.09	0.00	0.00	3,450	7,590
6312-9201	1/2"	21.5	0.85	150	5.91	1/2"	2.5	0.10	0.16	0.35	5,000	11,000
6312-0985	5/8"	27.0	1.06	190	7.48	5/8"	3.0	0.12	0.31	0.68	8,500	18,700
6312-9403	3/4"	34.0	1.34	210	8.27	3/4"	3.5	0.14	0.46	1.01	13,000	28,600

CODE: SF312PBD

KINZI DATA SHEET

100%
RECYCLABLE

WWW.KINZI.COM