

# PRODUCT DATA SHEET



## PRODUCT - DATA

### SAB/T/APL

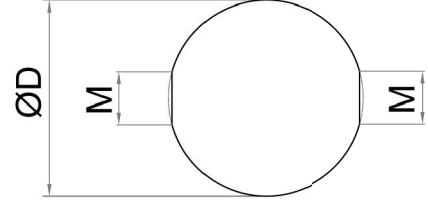
Architecture ball with through tapped hole  
(right hand thread)

### SAB/T/APL

#### Technical Data

Casting material : AISI316 - DIN 1.4408  
Surface treatment : "M.F." (Matte finished)

Note : Standard safety factor for working load  
is 1/4 of breaking load.



**M** Metric **SAB/T/APL**  
Architecture ball  
with through tapped hole (right hand thread)

SAB/T/APL SS316	SIZE M (mm)	ØD (mm)	ØD (inch)	Unit weight (kgs)	Unit weight (lb)	B.L. (kgs)	B.L. (lb)
6125-1573	M5	15	0.59	0.01	0.02	750	1,650
6125-2073	M5	20	0.79	0.03	0.07	750	1,650
6126-2074	M6	20	0.79	0.03	0.07	1,400	3,080
6128-2576	M8	25	0.98	0.06	0.13	2,200	4,840

CODE: SAB/T/APL

KINZI DATA SHEET

**100%**  
**RECYCLABLE**

[WWW.KINZI.COM](http://WWW.KINZI.COM)